

INDUSTRIAL  
FOR LEASE

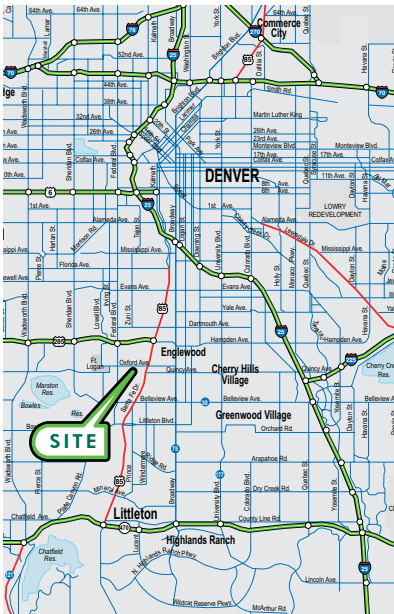
# 1800 W. OXFORD AVE. UNIT G

OXFORD-SANTA FE BUSINESS PARK :: ENGLEWOOD, CO 80110

DRIVE-IN LOADING  
DOORS (10' x 10')

ON-SITE MANAGEMENT

## LOCATION MAP



FOR MORE  
INFORMATION  
PLEASE CONTACT

### Murray Platt, SIOR

First Vice President  
720.528.6413  
murray.platt@cbre.com

### Paul Kluck, SIOR

First Vice President  
720.528.6405  
paul.kluck@cbre.com

### On-Site Office

303.762.1311

AVAILABLE:	3,015 SF
ELECTRICAL:	100 amps, 3 phase
WAREHOUSE CLEARANCE:	12'
YEAR BUILT:	1983-1984
LEASE RATE:	\$9.00/SF NNN
NNN EXPENSES:	\$3.80/SF

### BUILDING FEATURES:

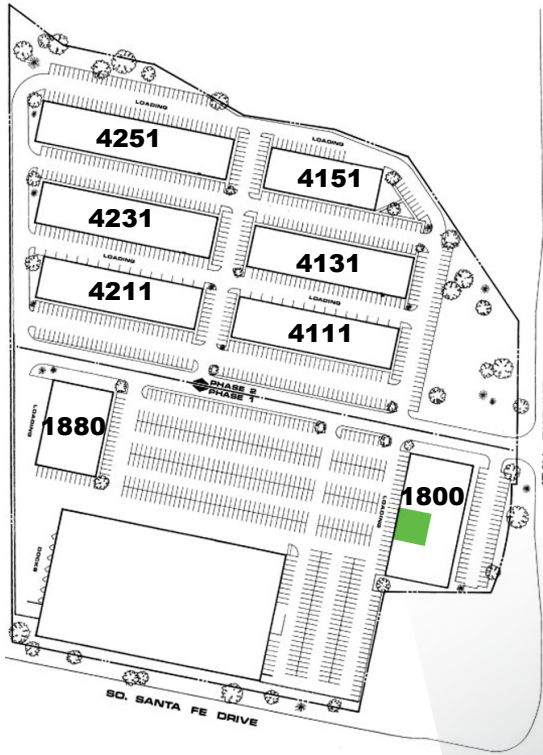
- :: 3' x 8' backlit identification sign
- :: Individual meter in each unit for gas and electricity
- :: Close to Riverpoint Shopping Center, banks, restaurants, Target and Costco
- :: Free tenant and customer parking

**CBRE**

INDUSTRIAL  
FOR LEASE

# 1800 W. OXFORD AVE. UNIT G

OXFORD-SANTA FE BUSINESS PARK :: ENGLEWOOD, CO 80110



FOR MORE  
INFORMATION  
PLEASE  
CONTACT

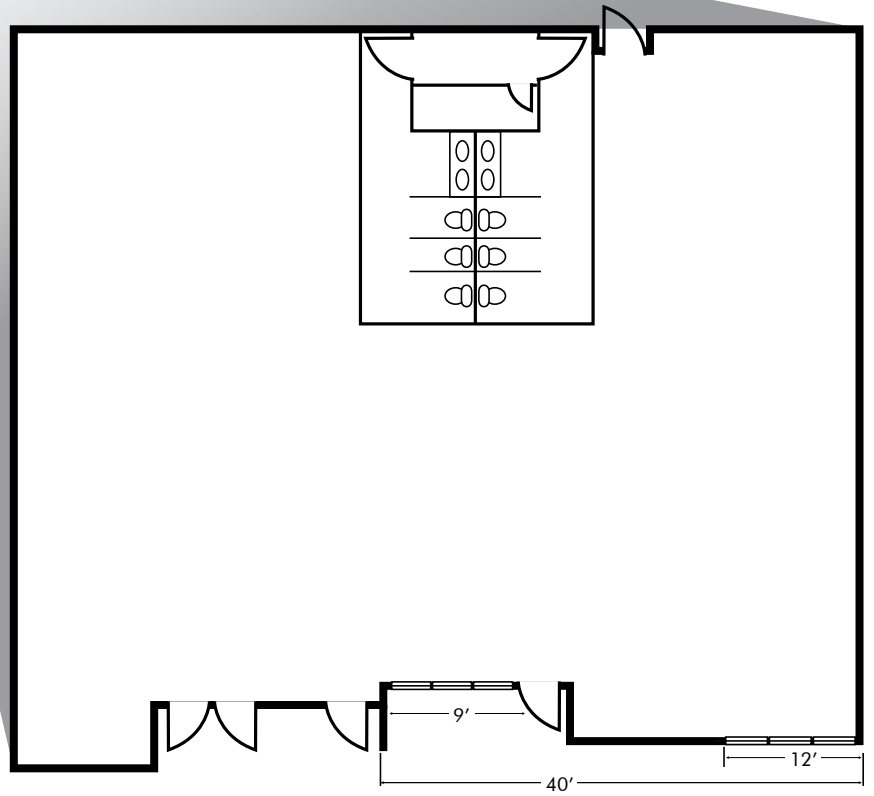
**Murray Platt, SIOR**

First Vice President  
720.528.6413  
murray.platt@cbre.com

**Paul Kluck, SIOR**

First Vice President  
720.528.6405  
paul.kluck@cbre.com

CBRE, Inc.  
8390 E. Crescent Parkway  
Suite 300  
Greenwood Village, CO 80111  
www.cbre.com/denver



\* measurements are approximate

© 2014 CBRE, Inc. This information has been obtained from sources believed reliable. We have not verified it and make no guarantee, warranty or representation about it. Any projections, opinions, assumptions or estimates used are for example only and do not represent the current or future performance of the property. You and your advisors should conduct a careful, independent investigation of the property to determine to your satisfaction the suitability of the property for your needs.

