

**FOR LEASE OR SALE**

# Providence Park

2101 Providence Park , Birmingham, AL 35242



**SHANNON  
WALTCHACK**



## OFFERING SUMMARY

<b>Lease Rate:</b>	\$18.00 SF/yr (Net of Janitorial, Power, and Internet)
<b>Sale Price:</b>	Call for Pricing
<b>Available SF:</b>	2,500 SF
<b>Building Size:</b>	7,366 SF

## PROPERTY DETAILS

- Professional Office Park located on Valleydale Road
- Parking available with direct, curbside access to entrance
- Convenient location across from Jefferson State Community College, adjacent to Veterans Park
- Excellent access to Caldwell Mill Road, Highway 280 and I-65

**MICHAEL MURRAY, CCIM**

205.382.1896

mm@shanwalt.com

**WE LOVE  
REAL ESTATE**

The information contained herein is from sources deemed reliable. No representation is made to the accuracy herein.

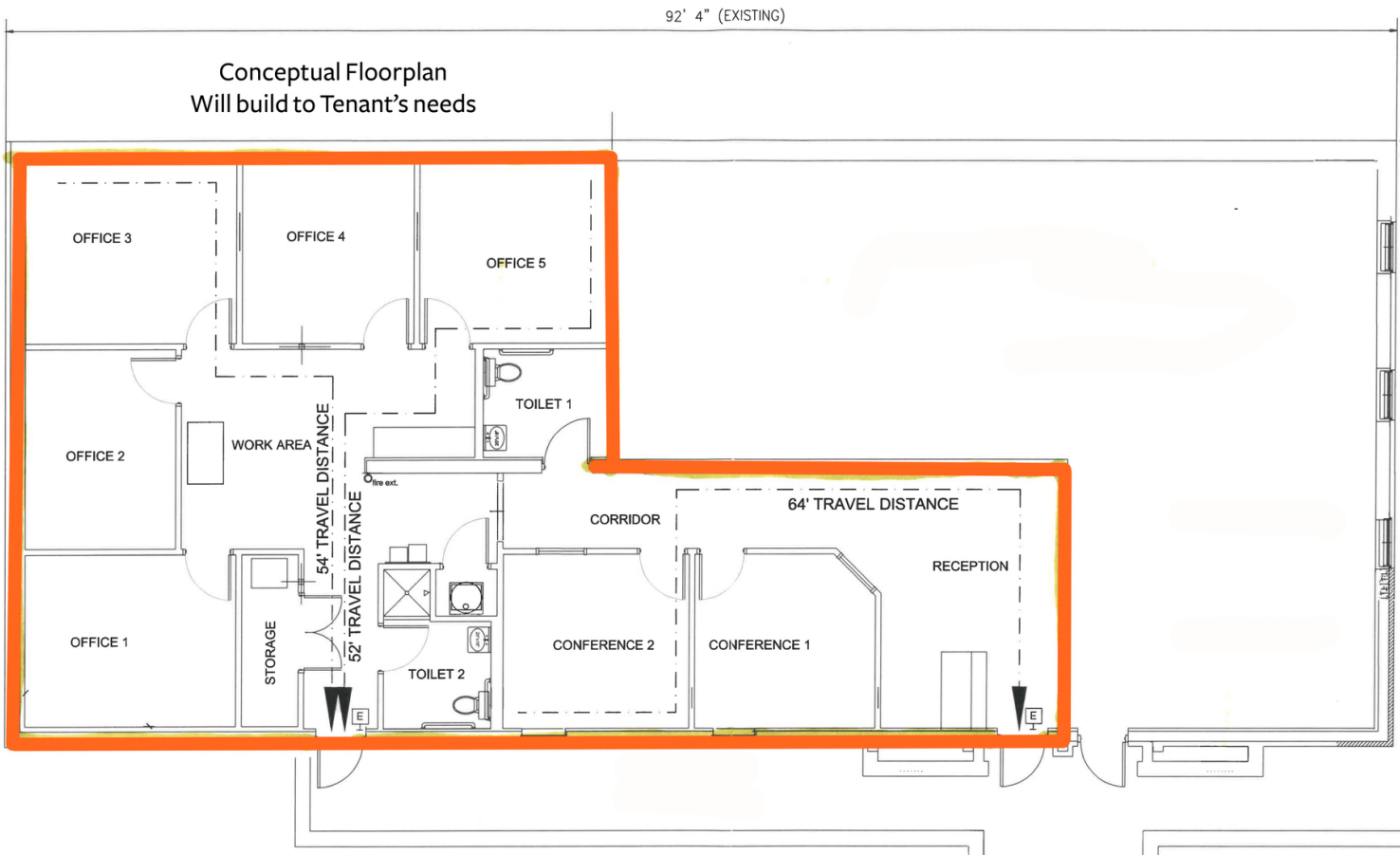
**FOR LEASE OR SALE**

# Providence Park

2101 Providence Park , Birmingham, AL 35242



**SHANNON  
WALTCHACK**



**MICHAEL MURRAY, CCIM**  
205.382.1896  
mm@shanwalt.com

**WE LOVE  
REAL ESTATE**

The information contained herein is from sources deemed reliable. No representation is made to the accuracy herein.