

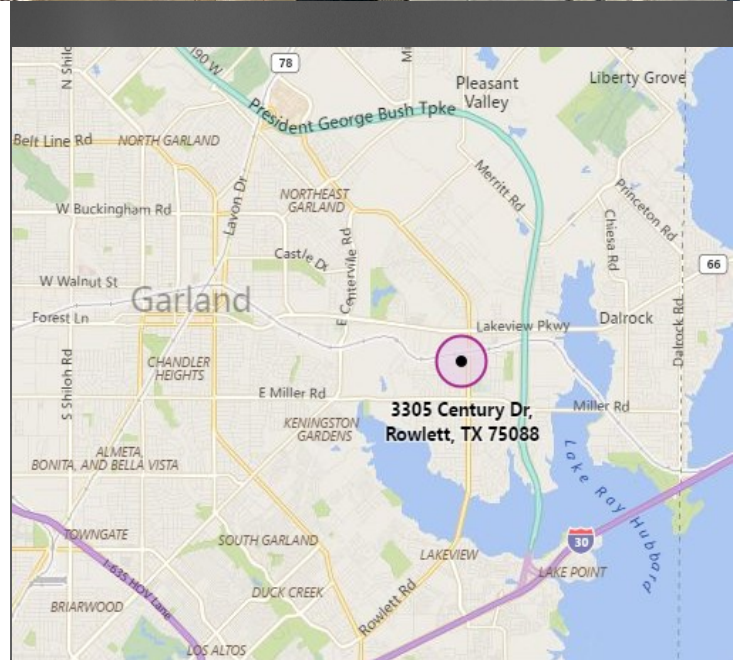
LAND FOR SALE

3305 Century Drive
Rowlett, TX 75088



Details:

- ◆ 0.51± Acres (22,500± SF)
- ◆ Easy access to President George Bush Tpk. and I-30 and Highway 66
- ◆ Zoning: C-2 General Commercial & Industrial
- ◆ Within 1 mile of Downtown Rowlett DART Station
- ◆ Price \$150,000



Janice Peters, CCIM
Peters@HudsonPeters.com
(972) 980 1188 ext 203



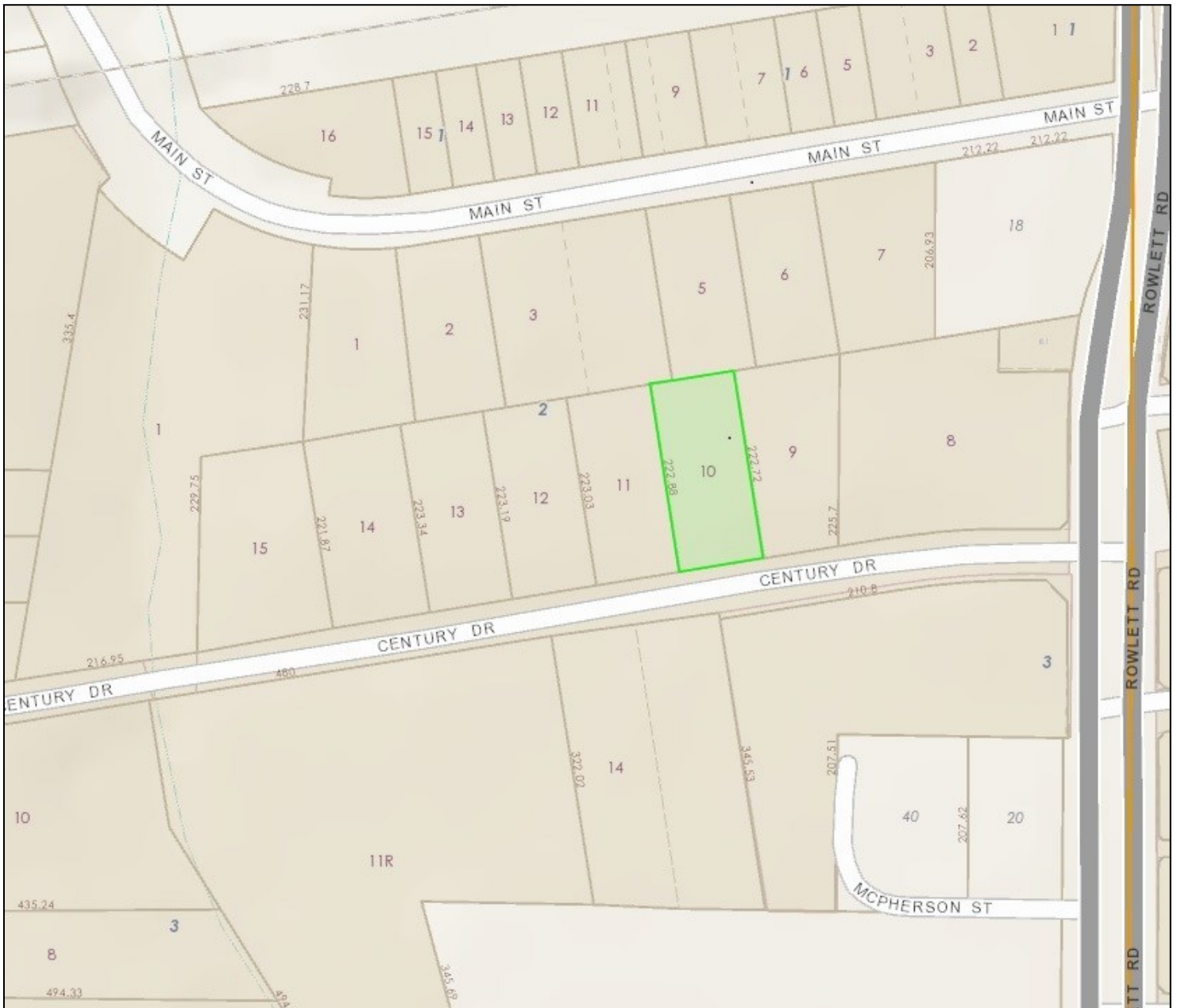
Rachel Boelter
Rachel@HudsonPeters.com
(972) 980 1188 ext 226



www.HudsonPeters.com

The information contained herein was obtained from sources believed reliable; however, Hudson Peters Commercial, LLC, makes no guarantees, warranties or representation as to the completeness or accuracy thereof. The presentation of these properties is submitted subject to errors, omissions, change of price or conditions prior to sale or lease or withdrawal without notice.

PLAT MAP



Janice Peters, CCIM
Peters@HudsonPeters.com
(972) 980 1188 ext 203



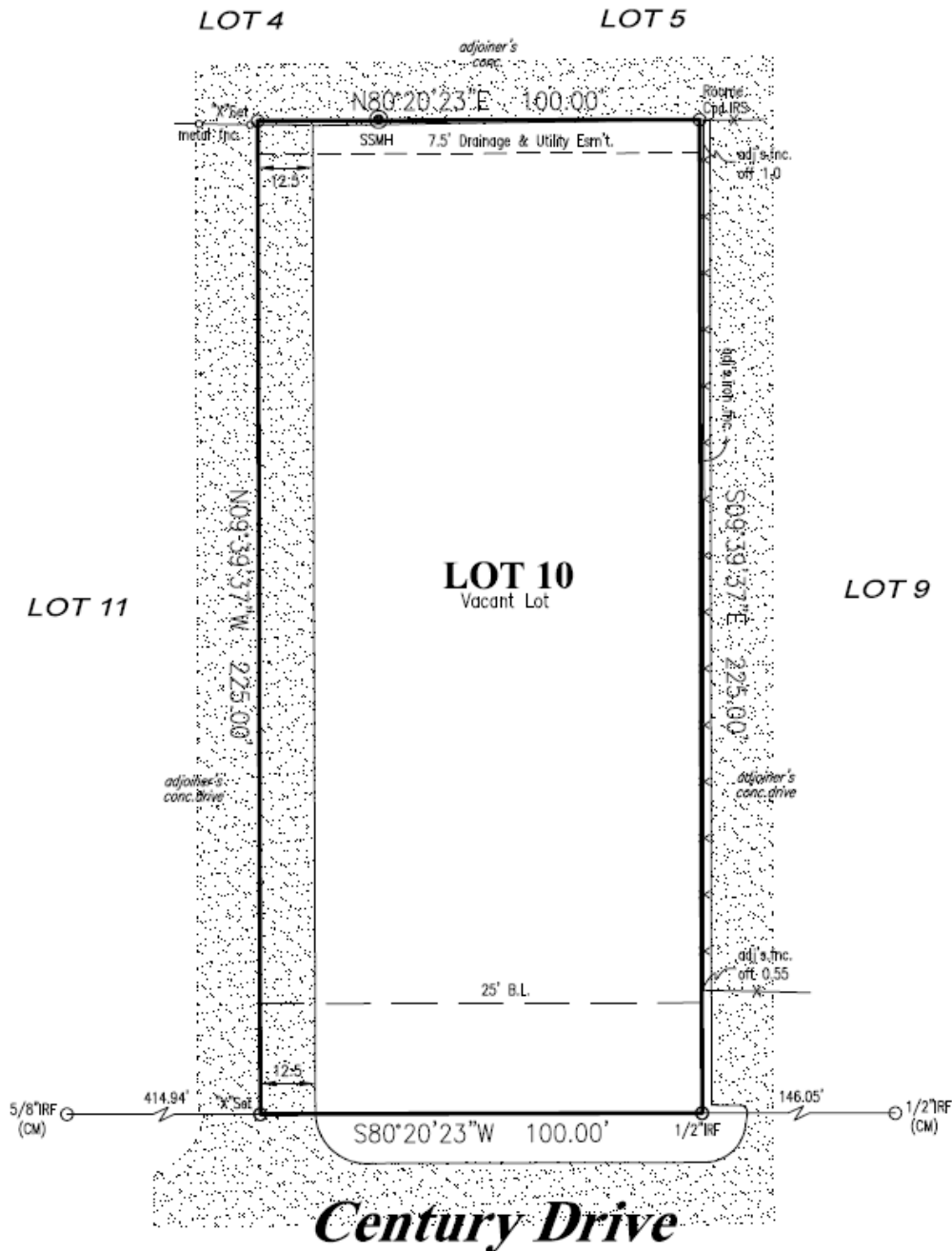
Rachel Boelter
Rachel@HudsonPeters.com
(972) 980 1188 ext 226



www.HudsonPeters.com

The information contained herein was obtained from sources believed reliable; however, Hudson Peters Commercial, LLC, makes no guarantees, warranties or representation as to the completeness or accuracy thereof. The presentation of these properties is submitted subject to errors, omissions, change of price or conditions prior to sale or lease or withdrawal without notice.

SURVEY



Janice Peters, CCIM
Peters@HudsonPeters.com
(972) 980 1188 ext 203



Rachel Boelter
Rachel@HudsonPeters.com
(972) 980 1188 ext 226



www.HudsonPeters.com

