

THREE PARCELS OF ±8.32, ±5.13, AND ±2.65 ACRES FOR SALE PLUS PRIVATE ROAD- 3± ACRES

OFF HOLMAN ROAD ON TELSTAR COURT, STOCKTON, CA

LISTING DATA

SIZE: Parcel 1: 8.32± acres } Same owner
Parcel 2: 2.65± acres }
Parcel 3: 5.13± acres - Different owner
Total: 16.10± acres

ZONING: RM (Residential, Medium Density)

COMMENTS:

- Situated in zone X500L (not requiring flood insurance)
- Available individually or grouped
- All off-site improvements complete
- All utilities to site
- Private road now within Owner's Association (± 3 Acres included)
- Sanitary sewer, storm sewer, and water service all approved as available by City of Stockton MUD

ECONOMIC DATA

- Bulk sale price on 10.97± or 16.10± acres will be considered.
- Offers on 5.13± acres should be drawn separately

Contact Broker for Pricing

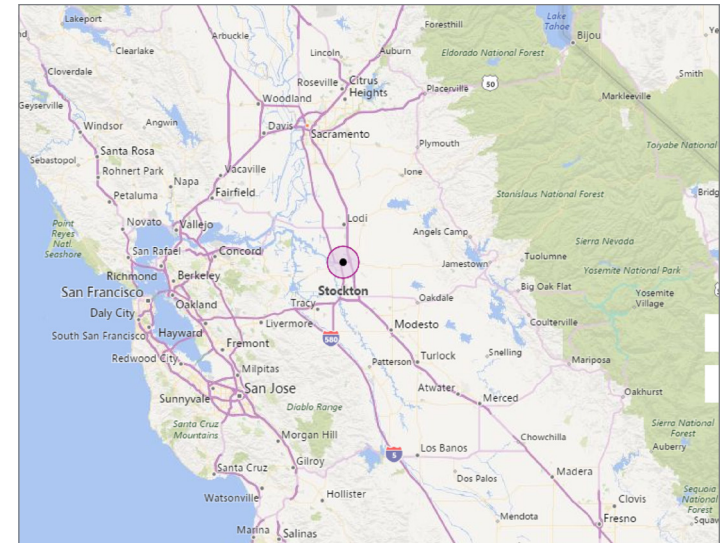
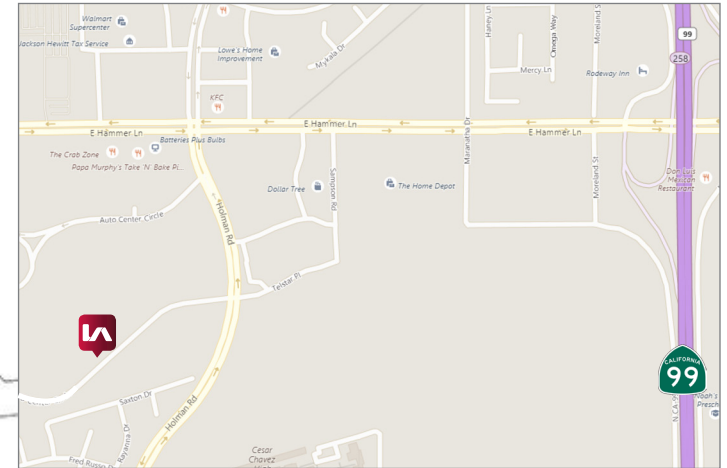
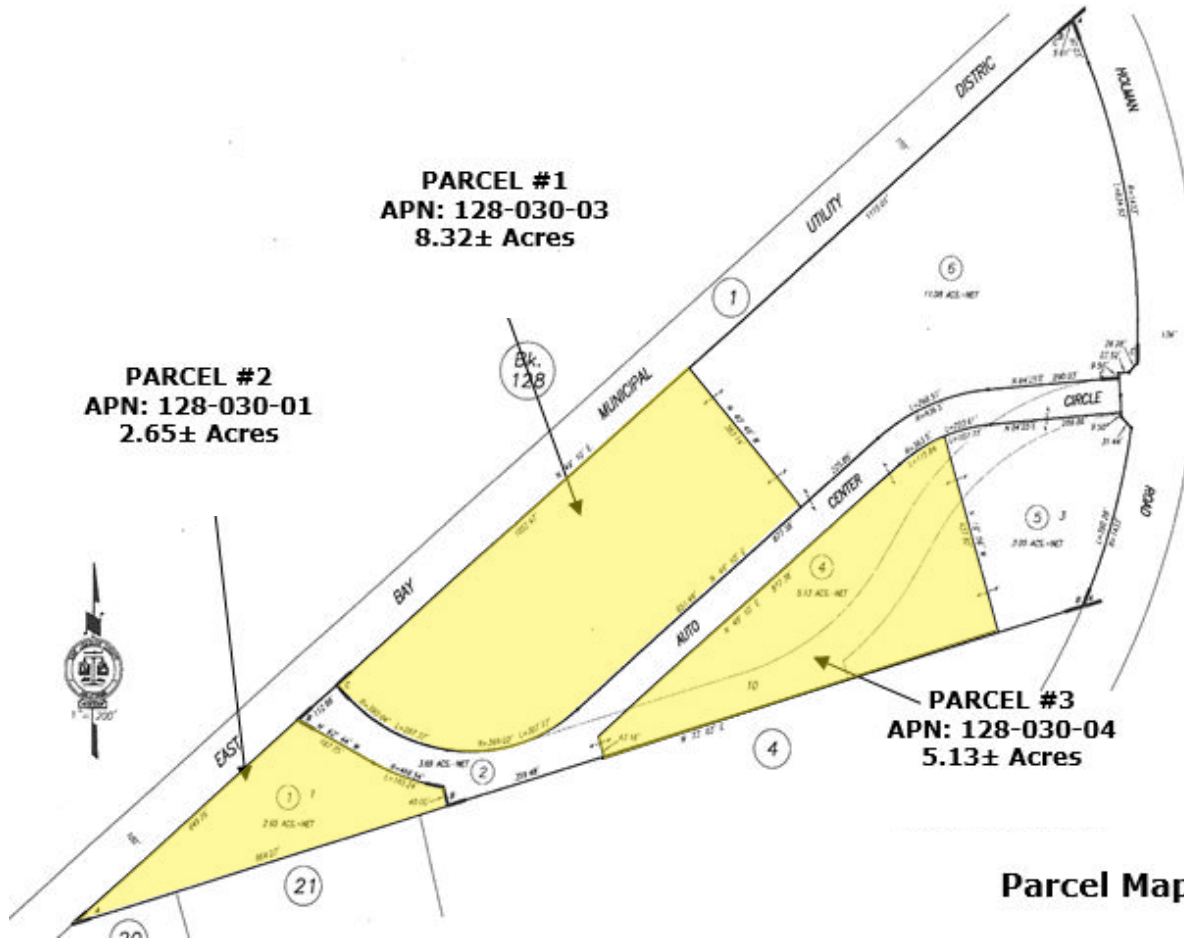


CONTACT

Wendy Coddington, SIOR
BRE #00592566
wcoddington@lee-associates.com
D 209.983.6830

All information furnished regarding property for sale, rental or financing is from sources deemed reliable, but no warranty or representation is made to the accuracy thereof and same is submitted to errors, omissions, change of price, rental or other conditions prior to sale, lease or financing or withdrawal without notice. No liability of any kind is to be imposed on the broker herein.

**THREE PARCELS OF ±8.32, ±5.13, AND ±2.65 ACRES FOR SALE
PLUS PRIVATE ROAD- 3± ACRES
OFF HOLMAN ROAD ON TELSTAR COURT, STOCKTON, CA**



Wendy Coddington, SIOR
BRE #00592566
wcoddington@lee-associates.com
D 209.983.6830

All information furnished regarding property for sale, rental or financing is from sources deemed reliable, but no warranty or representation is made to the accuracy thereof and same is submitted to errors, omissions, change of price, rental or other conditions prior to sale, lease or financing or withdrawal without notice. No liability of any kind is to be imposed on the broker herein.