



► *Greenfield Corporate Center*



*1770 Hempstead Road
Suite 101 & 102
Lancaster, PA 17601*

Total Square Feet:
16,088, 13,060 or 3,028 square feet

Lease Rate:
\$11.75/SF N/N/N "as-is"

Description:

PROPERTY INFORMATION

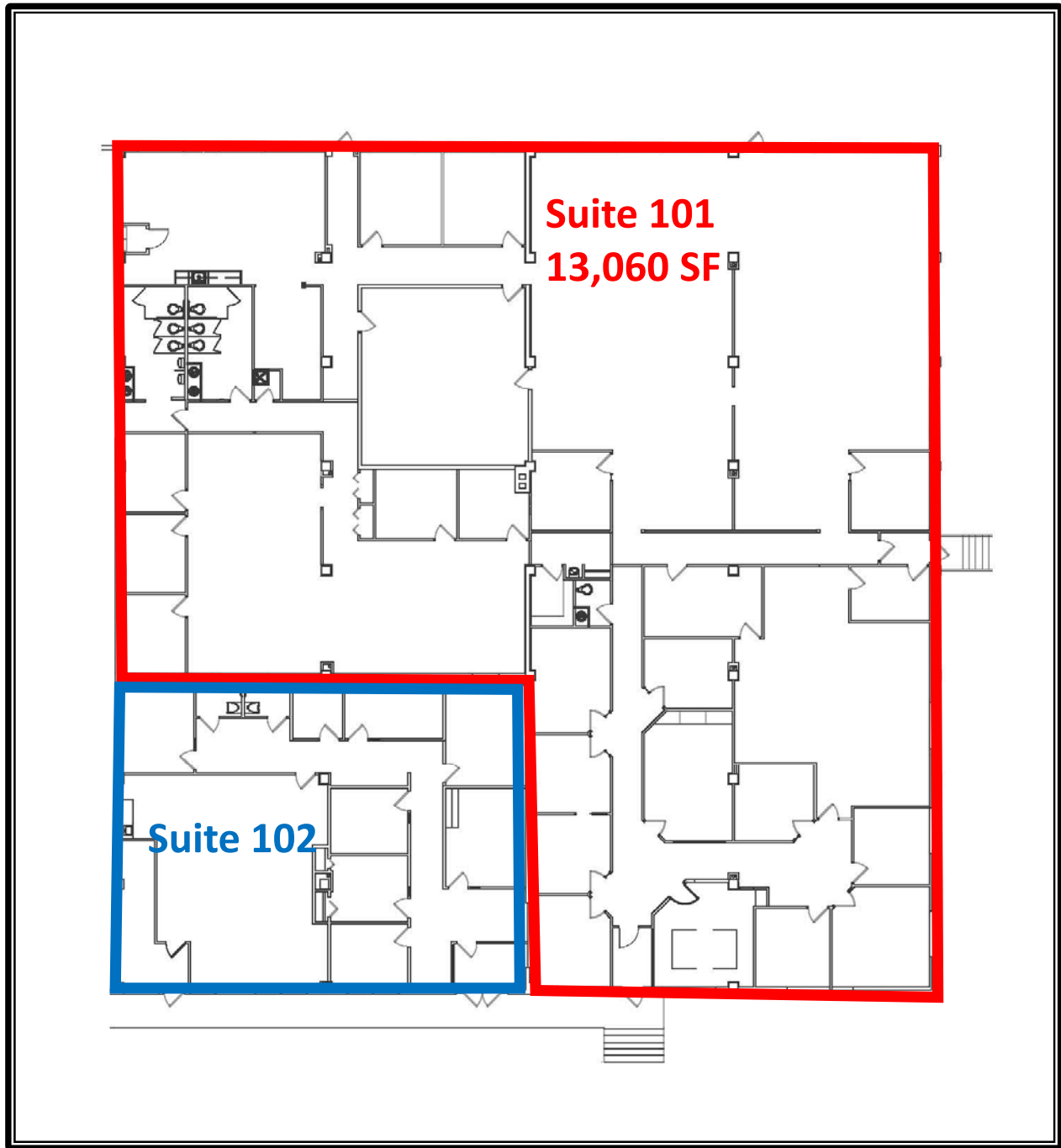
BLDG - 227

Square Feet Available	16,088, 13,060 or 3,028 square feet
Construction Date	1990
Construction Type	Masonry
Ceiling Height	8 – 9 feet
Electric	200 amp/120 volt
HVAC	Heat pump
Lighting	Fluorescent
Water	Public – Lancaster City
Sewer	Public – East Lampeter Township Sewer Authority
Parking	50 on site parking spaces
Zoning	Business Park Zoning
Municipality	East Lampeter Township
County	Lancaster
CAM Charges	\$2.65/SF

Information furnished regarding property for sale or rent is from sources deemed reliable, but is not guaranteed. No warranty or representation is made as to accuracy thereof and is submitted subject to errors, omissions, change of price, or other conditions, prior sale or lease or withdrawal without notice. No liability of any kind is to be imposed on the broker herein. High Properties, the property owner, and High Associates, Ltd., the broker, are indirect subsidiaries of High Real Estate Group LLC.

For Lease

1770 Hempstead Road, Suite 101 & 102
Lancaster, PA 17601



Information furnished regarding property for sale or rent is from sources deemed reliable, but is not guaranteed. No warranty or representation is made as to accuracy thereof and is submitted subject to errors, omissions, change of price, or other conditions, prior sale or lease or withdrawal without notice. No liability of any kind is to be imposed on the broker herein. High Properties, the property owner, and High Associates, Ltd., the broker, are indirect subsidiaries of High Real Estate Group LLC.