



## TUDOR OFFICE BUILDING

Downtown Las Vegas location

### PROPERTY HIGHLIGHTS

- ±1,894 sf office on 0.16 acres
- Seven (7) private parking spaces
- Secured fenced courtyard
- Zoned (P-O) Professional Office
- Primary building converted to office use with type VB Construction in August 2014
- ADA Compliant
- Located near the cross streets of East Bonneville and South 7th Ave.
- **LEASE RATE: \$1.45/sf NNN  
\$0.24/sf CAM**

For more information,  
please contact:

**JOE LEAVITT**

*Principal*

C 702.303.7893

joe.leavitt@avisonyoung.com

NV RE Lic#: S.0062543.LLC

**CHRIS LEXIS**

*Principal*

C 702.376.8500

chris.lexis@avisonyoung.com

NV RE Lic#: S.0062998.LLC

10845 Griffith Peak Drive, Suite 100

Las Vegas, NV 89135

O 702.472.7979 F 702.475.7545

avisonyoung.com

**FOR LEASE**

610 South Seventh Street  
Las Vegas, NV 89101



The property is a beautifully restored picturesque single-story Tudor-style building within the historic district now known as Lawyer's Row in Downtown Las Vegas. Located close to courthouses, City Hall, Clark County Government Center, Smith Center, Arts District, World Market Center as well as many downtown landmarks and restaurants. The location also offers easy access to I-15 and U.S. 95.

**AVISON  
YOUNG**

10845 Griffith Peak Drive, Suite 100  
Las Vegas, NV 89135  
O 702.472.7979 F 702.475.7545

**CHRIS LEXIS**

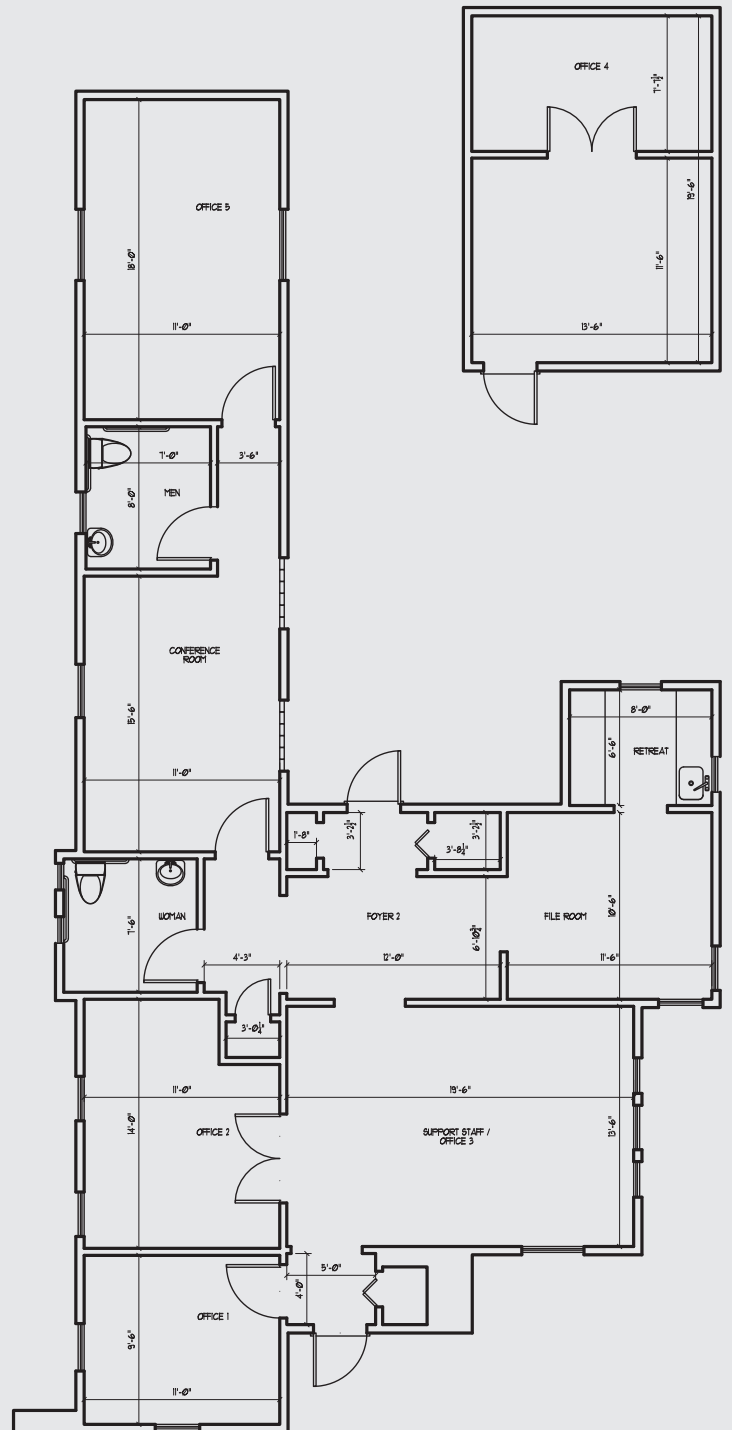
*Principal*  
C 702.376.8500  
chris.lexis@avisonyoung.com  
NV RE Lic#: S.0062998.LLC

**JOE LEAVITT**

*Principal*  
C 702.303.7893  
joe.leavitt@avisonyoung.com  
NV RE Lic#: S.0062543.LLC

**FOR LEASE**

610 South Seventh Street  
Las Vegas, NV 89101



**AVISON  
YOUNG**

10845 Griffith Peak Drive, Suite 100  
Las Vegas, NV 89135  
O 702.472.7979 F 702.475.7545

**CHRIS LEXIS**

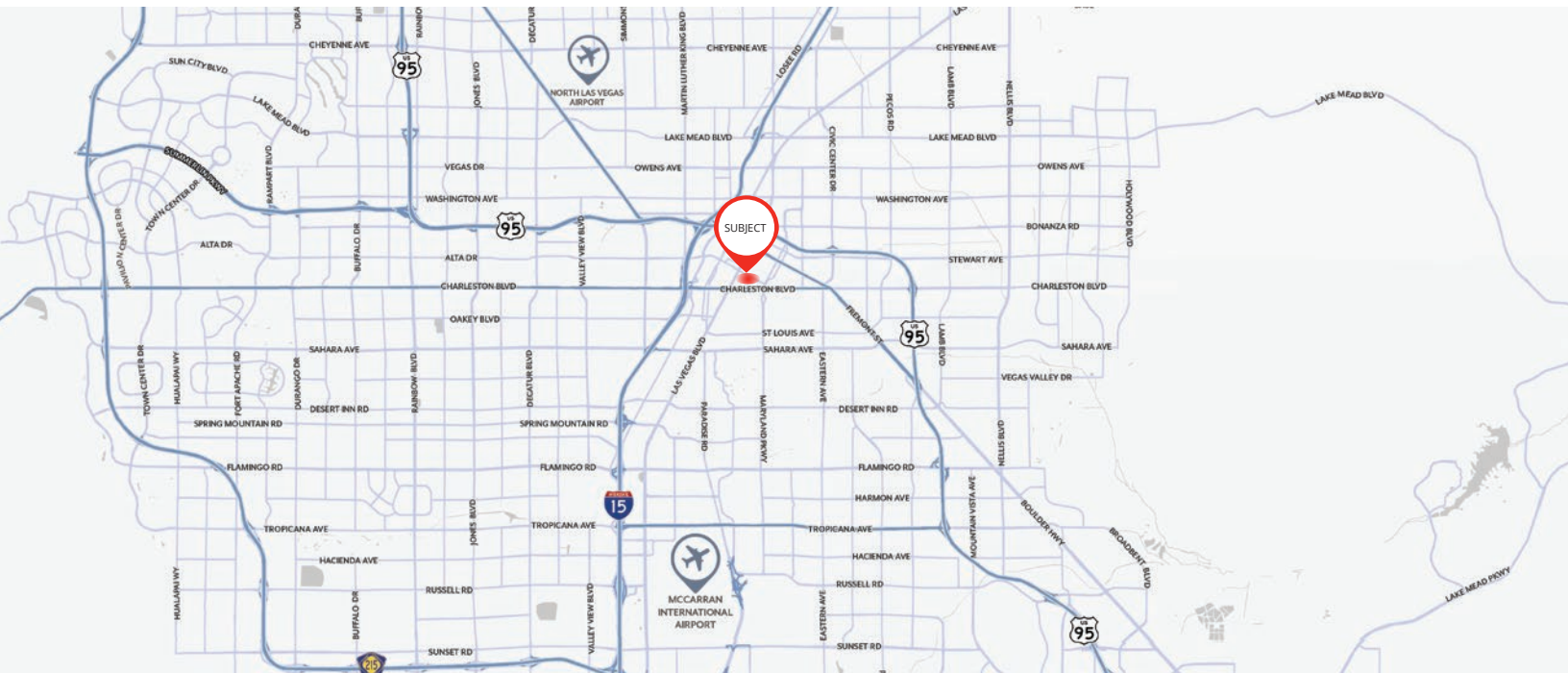
Principal  
C 702.376.8500  
chris.lexis@avisonyoung.com  
NV RE Lic#: S.0062998.LLC

**JOE LEAVITT**

Principal  
C 702.303.7893  
joe.leavitt@avisonyoung.com  
NV RE Lic#: S.0062543.LLC

**FOR LEASE**

610 South Seventh Street  
Las Vegas, NV 89101



**AVISON  
YOUNG**

10845 Griffith Peak Drive, Suite 100  
Las Vegas, NV 89135  
O 702.472.7979 F 702.475.7545

**CHRIS LEXIS**  
Principal  
C 702.376.8500  
chris.lexis@avisonyoung.com  
NV RE Lic#: S.0062998.LLC

**JOE LEAVITT**  
Principal  
C 702.303.7893  
joe.leavitt@avisonyoung.com  
NV RE Lic#: S.0062543.LLC