



## WESTRIDGE OFFICE PARK

### LEASE RATE

\$18.00 SF/YR MG

### AVAILABLE SF

UP TO 6,320 SF

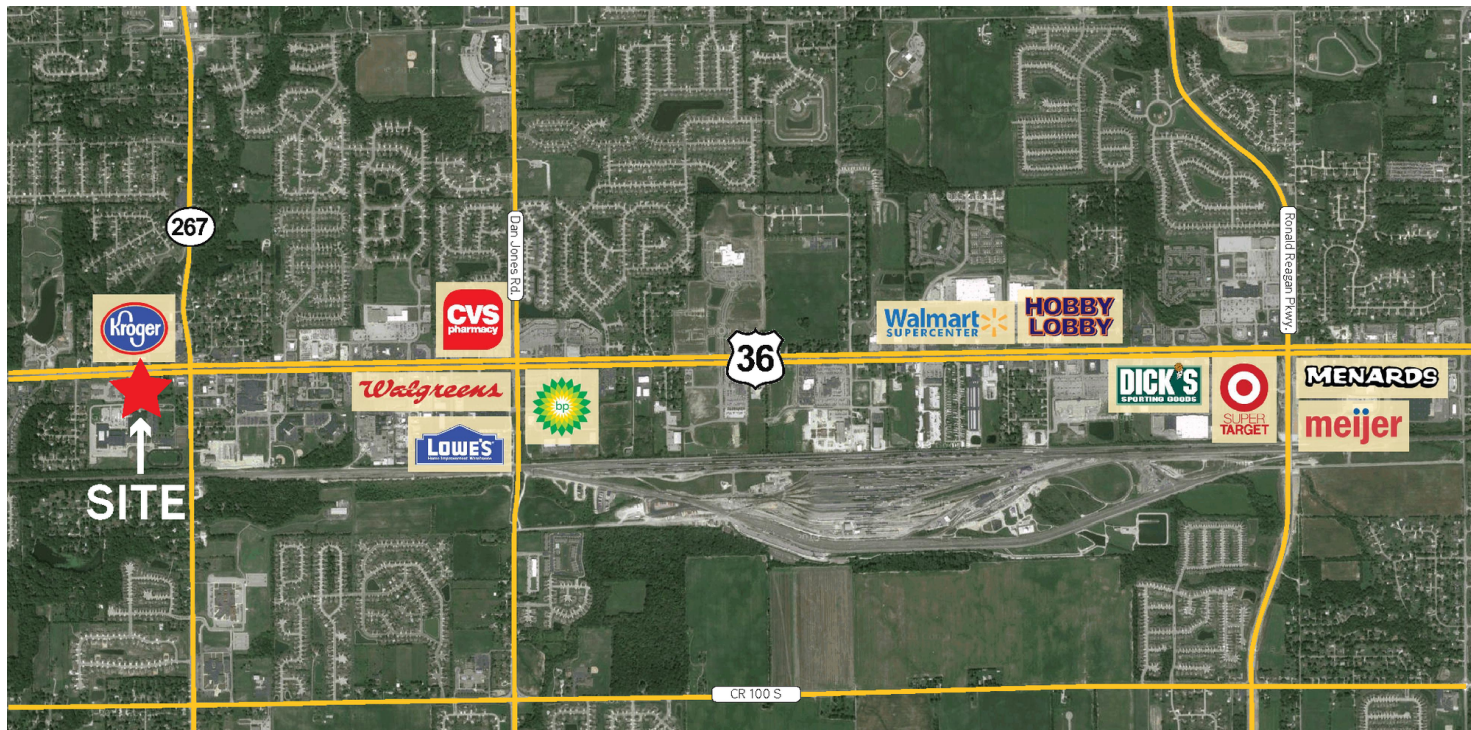


- + Great visibility from US 36 corridor (36,000 ADT)
- + Easy access in all directions from traffic light intersection
- + Close to numerous restaurant and retail amenities
- + Above standard drive-up parking (6.7/1,000)

[PaulDickTeam.com](http://PaulDickTeam.com)

# 6781 & 6845 E US HIGHWAY 36

AVON, IN 46123



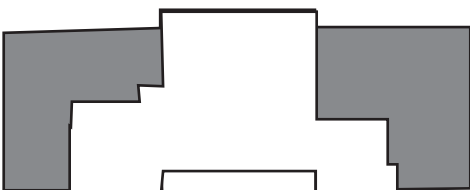
**LEASE**

**OFFICE**

**PaulDickTeam.com**



**WESTRIDGE OFFICE PARK BUILDING I**



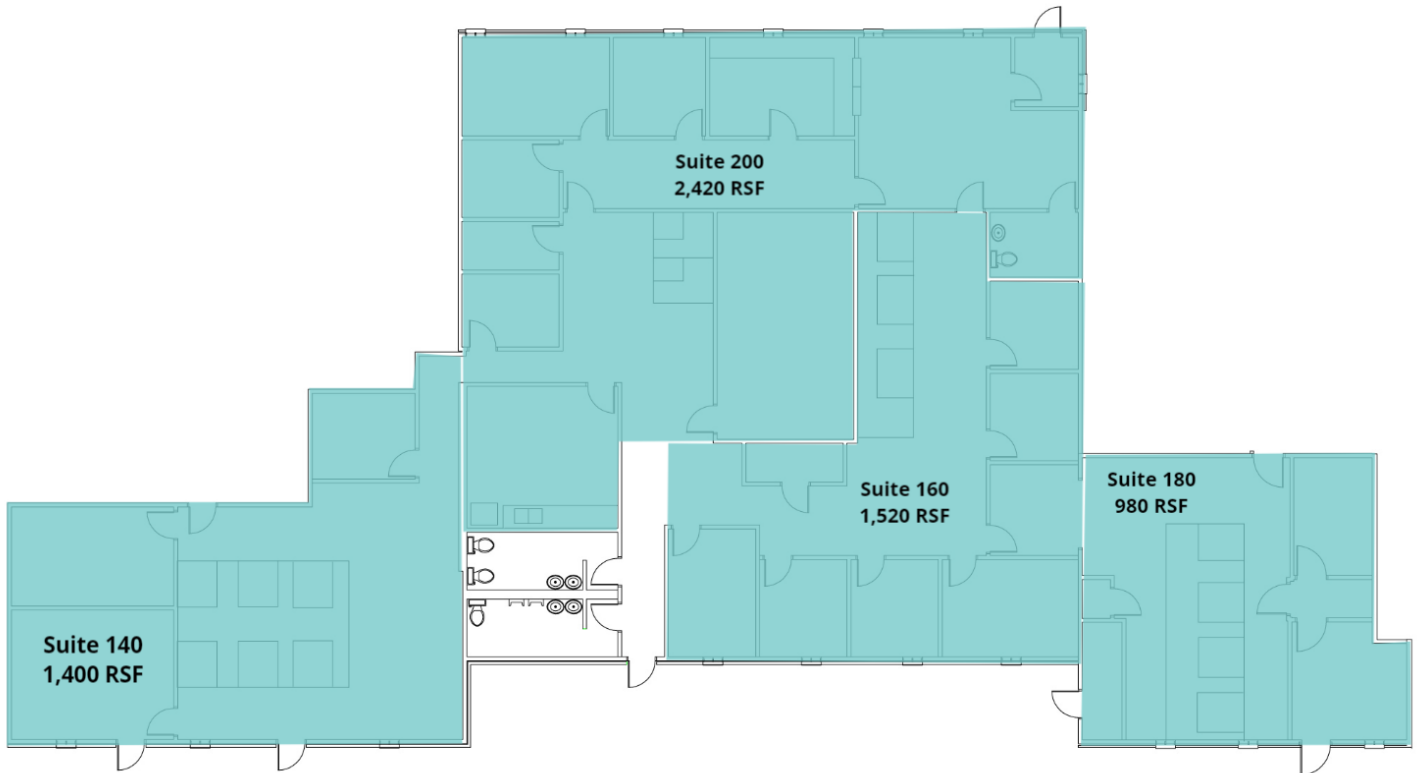
**Suite 200 // 6,320 SF**



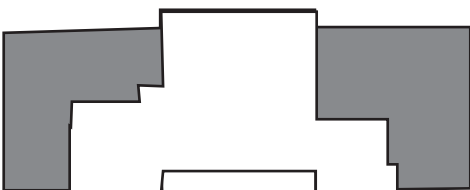
**LEASE**

**OFFICE**

**PaulDickTeam.com**



**WESTRIDGE OFFICE PARK BUILDING I**



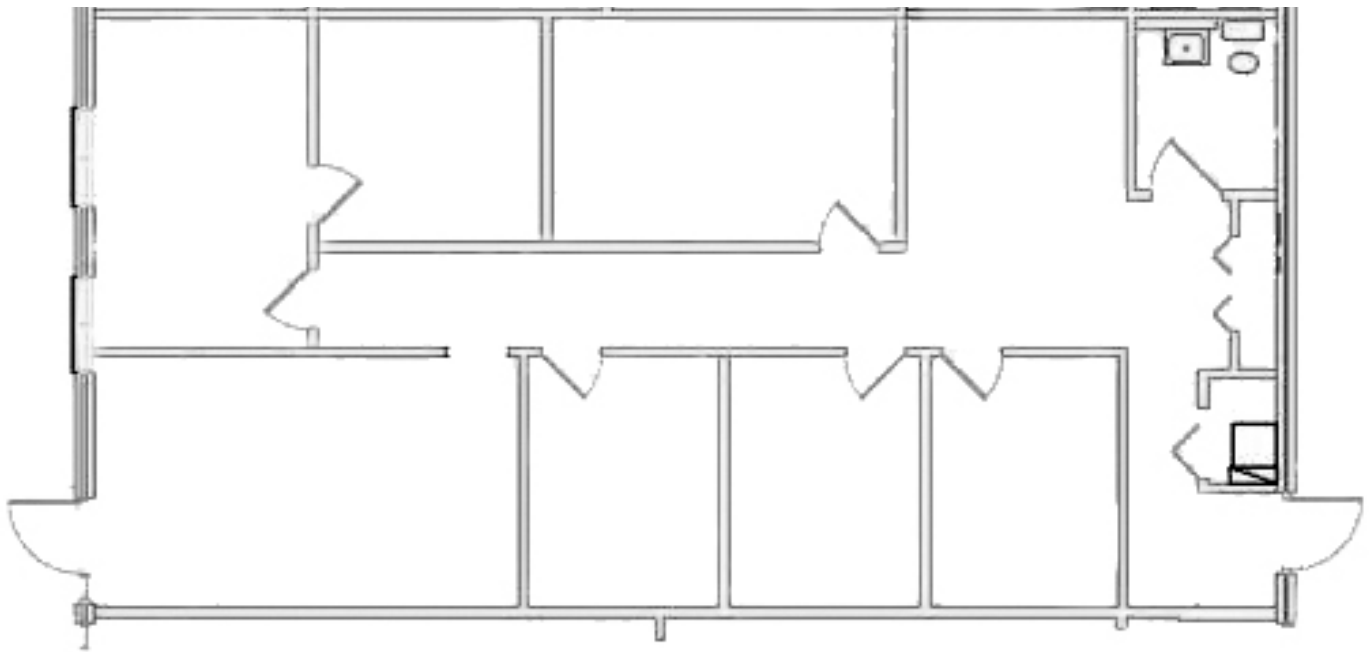
**Suite 140 - 200 // 980 - 2,420 SF**



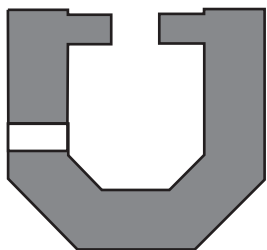
**LEASE**

**OFFICE**

**PaulDickTeam.com**



**WESTRIDGE OFFICE PARK BUILDING II**



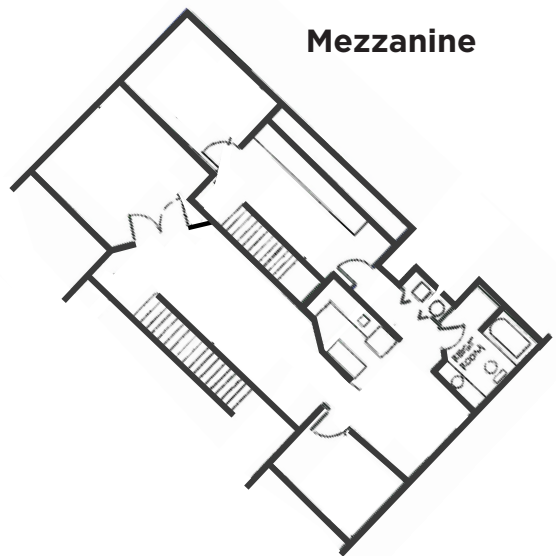
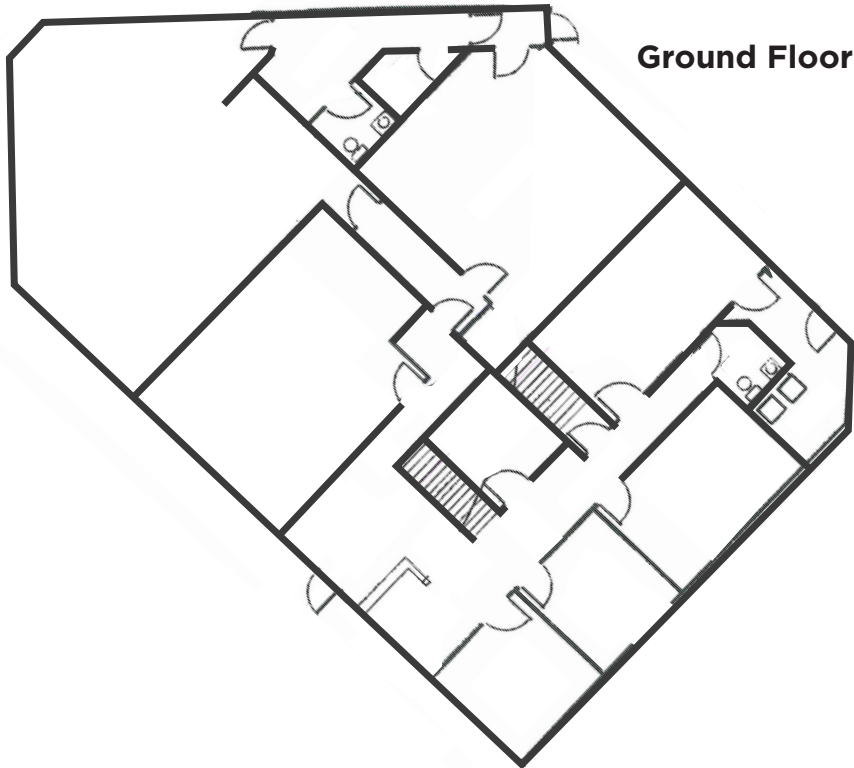
**Suite 450 // 1,235 SF**



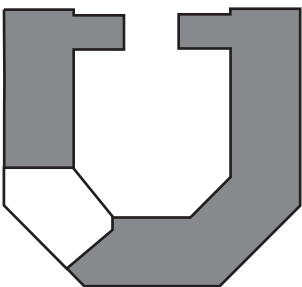
**LEASE**

**OFFICE**

**PaulDickTeam.com**



**WESTRIDGE OFFICE PARK BUILDING II**



**Suite 500 // 4,700 SF**

