

Pioneer Plaza

1112 - 1194 West Pioneer Parkway, Arlington, TX 76013



Pioneer Plaza		
1168	DOTHEY & WELLS	1168
1172	G.I. Oriental Spa	1172
1169	C&A, Costlow & Associates, Inc. Insurance & Services	1169
1170	PRECISE LAND RECORDS	1170
1174	Wave Healthcare	1174
1176 Downing & Downing, Attorneys		
1173	Paul Frank, Attorney David Downing, Attorney	1173
1164	CANARY PAYMENT SERVICES	1164

NOW LEASING!

Property Highlights

- Value class B garden style professional office park
- Over 5 parking spaces per 1,000 SF leased
- 24hr / 7 day a week access to your office & full control of the heating and cooling within your suite
- All suites are private and self contained (restrooms, offices, breakrooms, conference room)
- Move in ready offices ranging from 600 to 4,200 SF
- Prominent Tenant signage along Pioneer Parkway (Spur-303) and Division
- Efficient, flexible floor plans (layout)

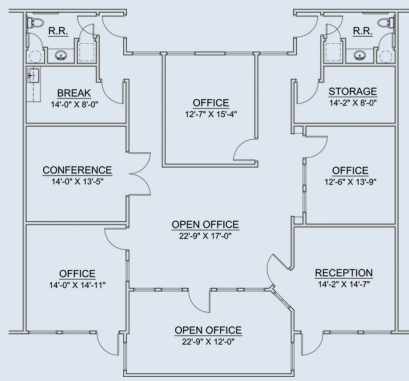


**Contact Kolby Dickerson 214-534-1599
or Cole Moreano 214-995-1797
or Bill Pope 214-403-6635**

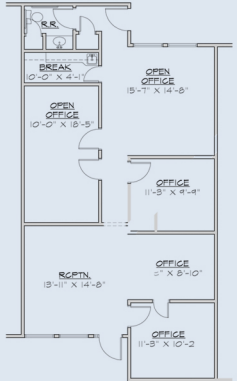


Amenities

- Professional local property management office focused on immediate resolution to tenant needs
- Close Proximity to 7 major medical centers
 - Cook Children's Hospital** (+-1.69 miles)
 - MCA -Medical Center Arlington** (+-1.65 miles)
 - USMD at Arlington** (+-2.47 miles)
 - Millwood Hospital** (+-3.23 miles)
 - Arlington Memorial Hospital** (+- 3.29 miles)
 - Texas Health Resources** (+-3.3 miles)
 - Kindred Hospital** (+-3.4 miles)
- Walking distance to shopping, casual dining, health club, and cultural centers



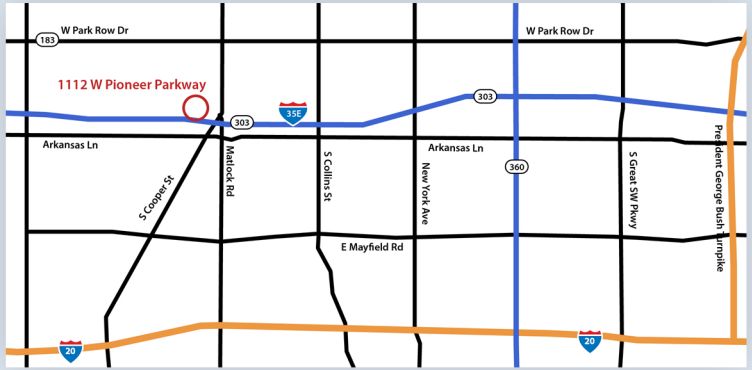
Suite 1140E-F
2,400 RSF



Suite 1190
1,200 RSF



Kolby Dickerson, 214-534-1599
 Cole Moreano, 214-995-1797
 Bill Pope, 214-403-6653
 leasing@txreproperties.com
 www.txreproperties.com



1112 - 1194 West Pioneer Parkway, Arlington, TX 76013