



Availabilities



kiddermathews.com

Availabilities

Suite 101 - 3,589 SF

\$17.00 / SF, NNN (2016 Est. NNN = \$5.25 / SF)

Downtown Woodinville location - across the street from the City Hall

Close to amenities, bus lines and town center

Quick access to Highway 522 and I-405

Mixed use building ideal for office or retail tenant

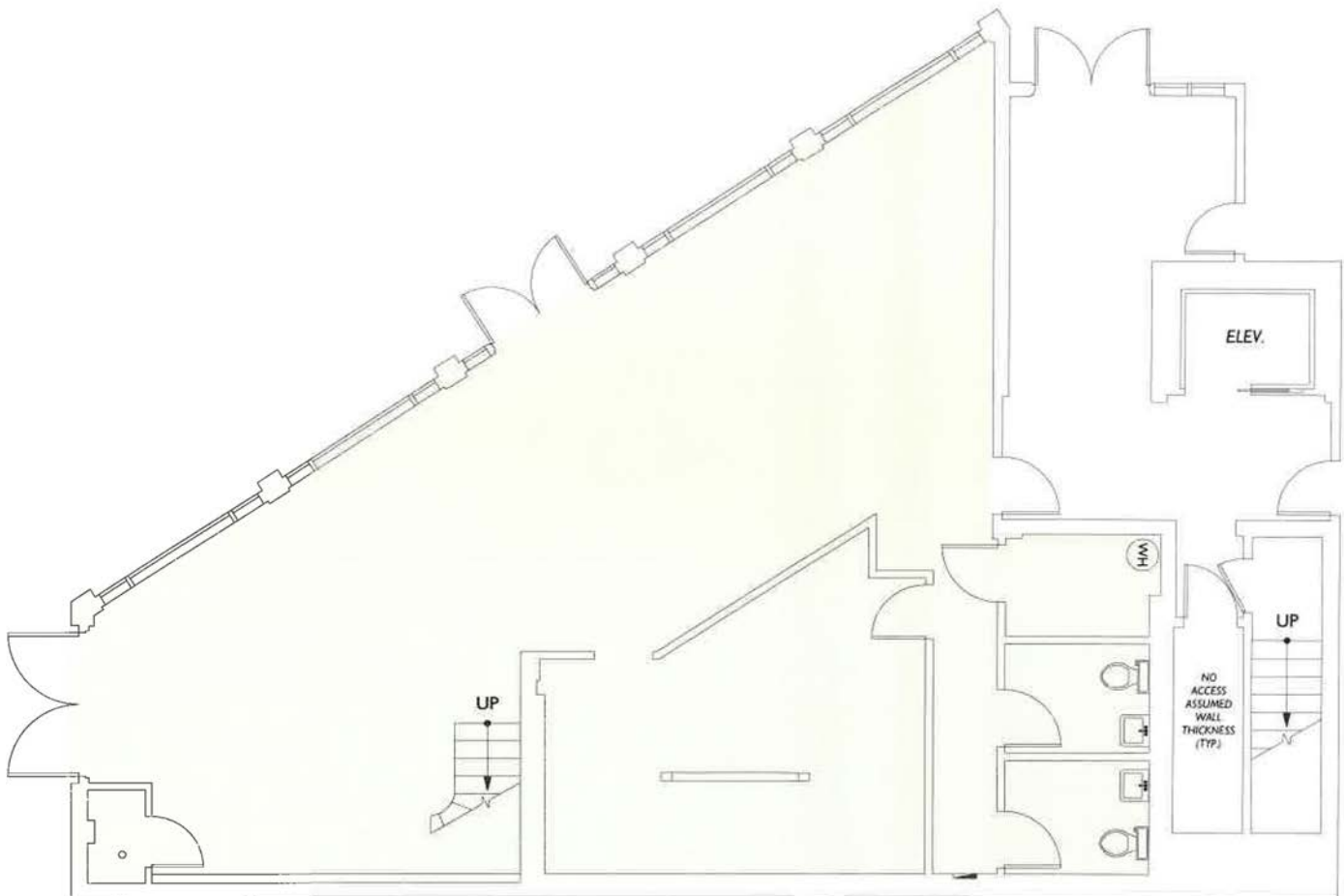
Contact

James Leptich
425.450.1159
jleptich@kiddermathews.com

Dan Harden
425.450.1135
dharden@kiddermathews.com

The Arbors Building

First Floor - Suite 101 Ground Floor



Contact

James Leptich

425.450.1159

jleptich@kiddermathews.com

Dan Harden

425.450.1135

dharden@kiddermathews.com

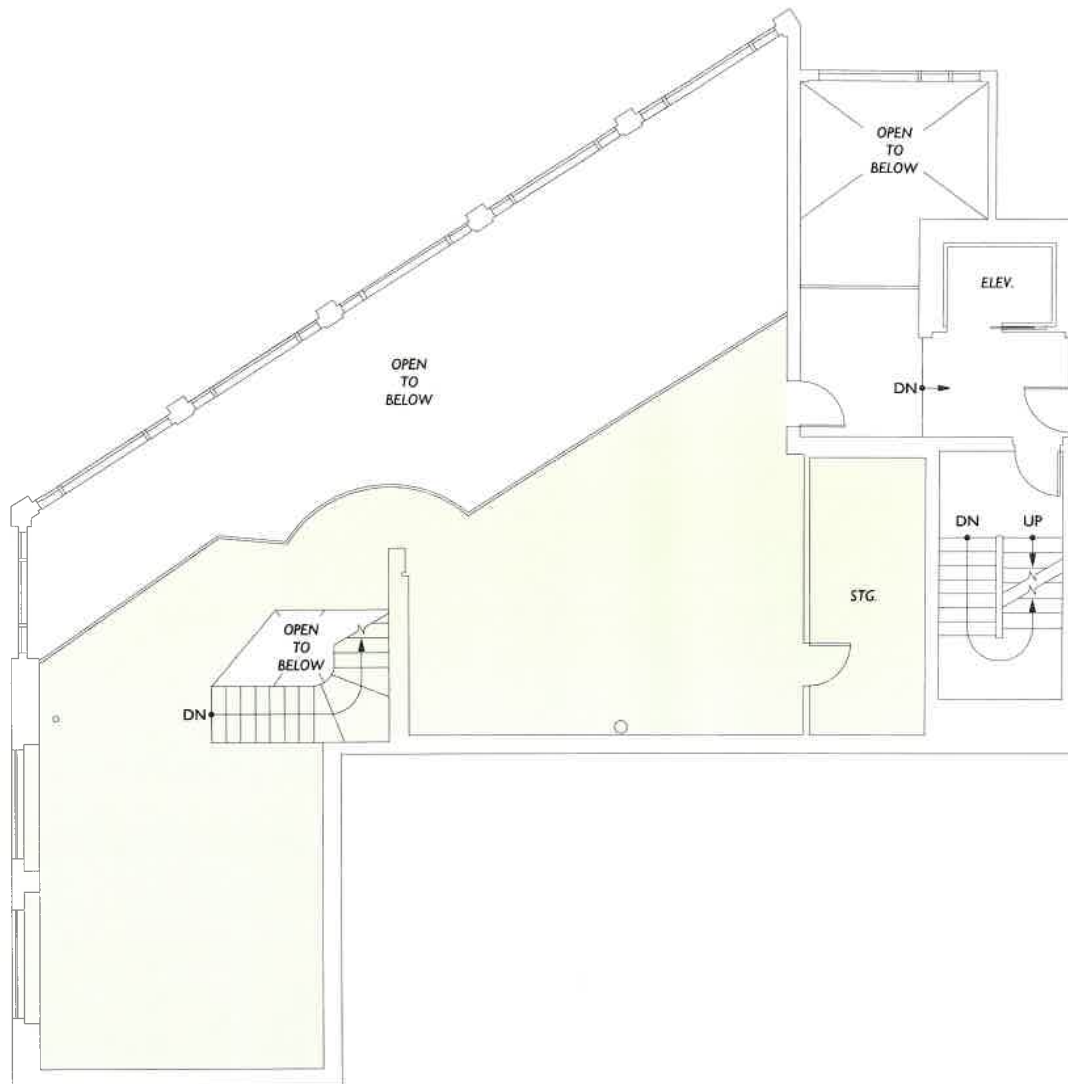
kiddermathews.com

This information supplied herein is from sources we deem reliable. It is provided without any representation, warranty or guarantee, expressed or implied as to its accuracy. Prospective Buyer or Tenant should conduct an independent investigation and verification of all matters deemed to be material, including, but not limited to, statements of income and expenses. Consult your attorney, accountant, or other professional advisor.



The Arbors Building

Mezzanine Level - Suite 101



Contact

James Leptich

425.450.1159

jleptich@kiddermathews.com

Dan Harden

425.450.1135

dharden@kiddermathews.com

kiddermathews.com

This information supplied herein is from sources we deem reliable. It is provided without any representation, warranty or guarantee, expressed or implied as to its accuracy. Prospective Buyer or Tenant should conduct an independent investigation and verification of all matters deemed to be material, including, but not limited to, statements of income and expenses. Consult your attorney, accountant, or other professional advisor.

