



ADVANCED MEDICAL PLAZA

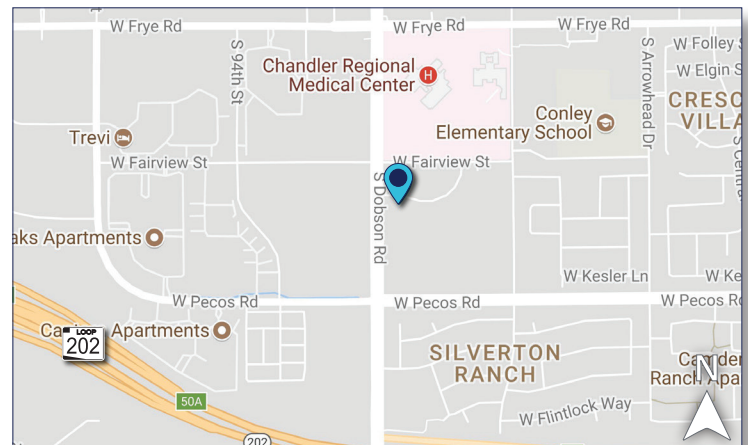
725 S Dobson Road | Chandler, AZ 85224

OFFERING SUMMARY

YEAR BUILT	2002
BUILDING SIZE	±29,466 SF
AVAILABILITY Suite 203	±3,673 RSF
LEASE RATE	\$21.00/SF, NNN
TENANT IMPROVEMENTS	Negotiable
OPERATING EXPENSES	\$8.72/SF
PARKING Covered Parking \$35/space/month	6.5:1,000 SF 1:1,000 SF
ZONING	PAD, City of Chandler

PROPERTY HIGHLIGHTS

- Highly visible, lighted signage from Dobson Road
- Attractive four-sided architecture with abundant natural light
- Built-out medical space offering immediate occupancy
- Excellent freeway access to Loop 101 and Loop 202
- Located in near proximity to Chandler Regional Medical Center



Partnership. Performance.

avisonyoung.com

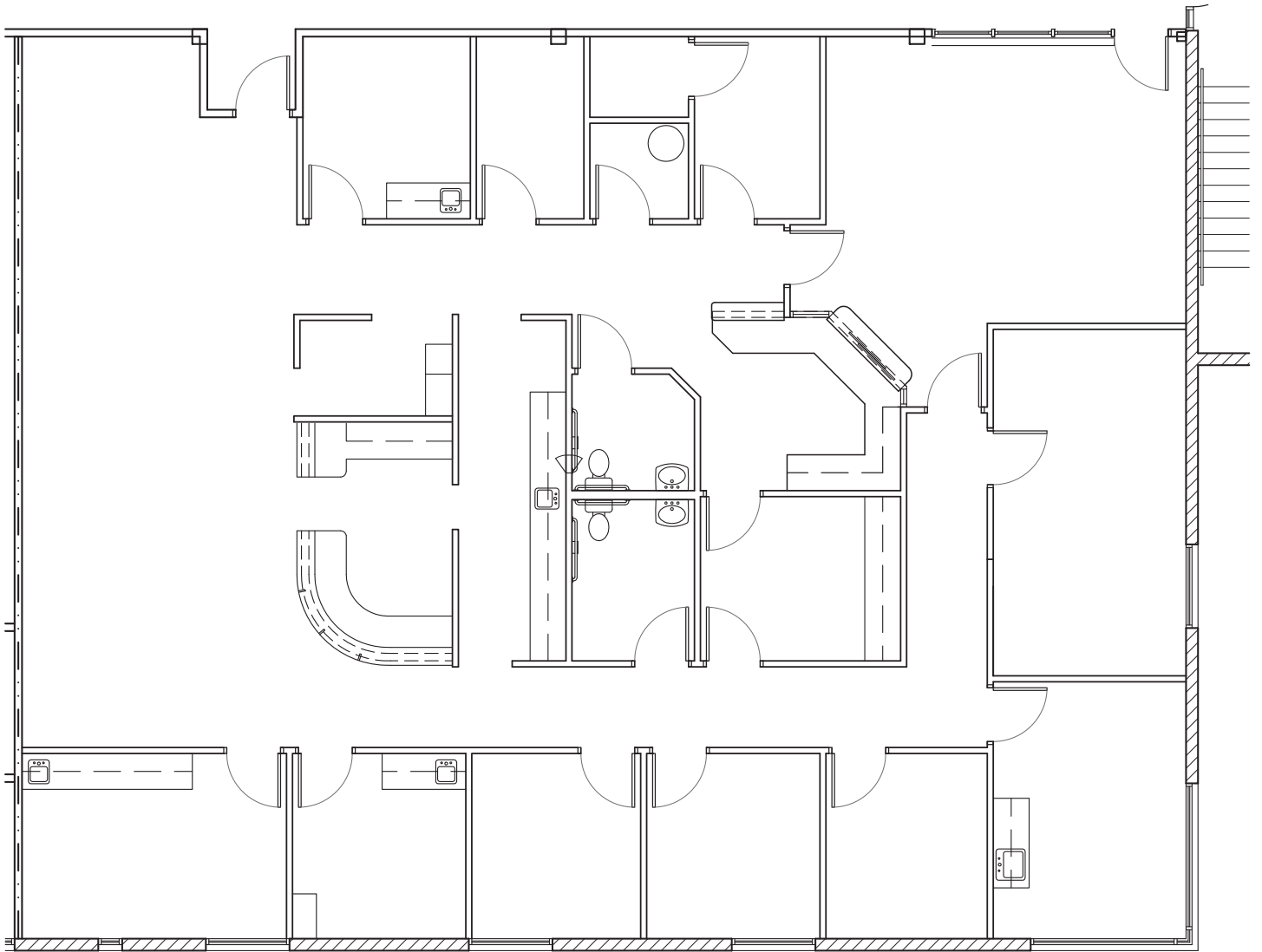
Kevin S. Helland, MBA
Senior Vice President
623.293.1543
kevin.helland@avisonyoung.com

Nicholas A. Pelusio
Senior Vice President
602.505.3010
nicholas.pelusio@avisonyoung.com

PROPERTY PHOTOS

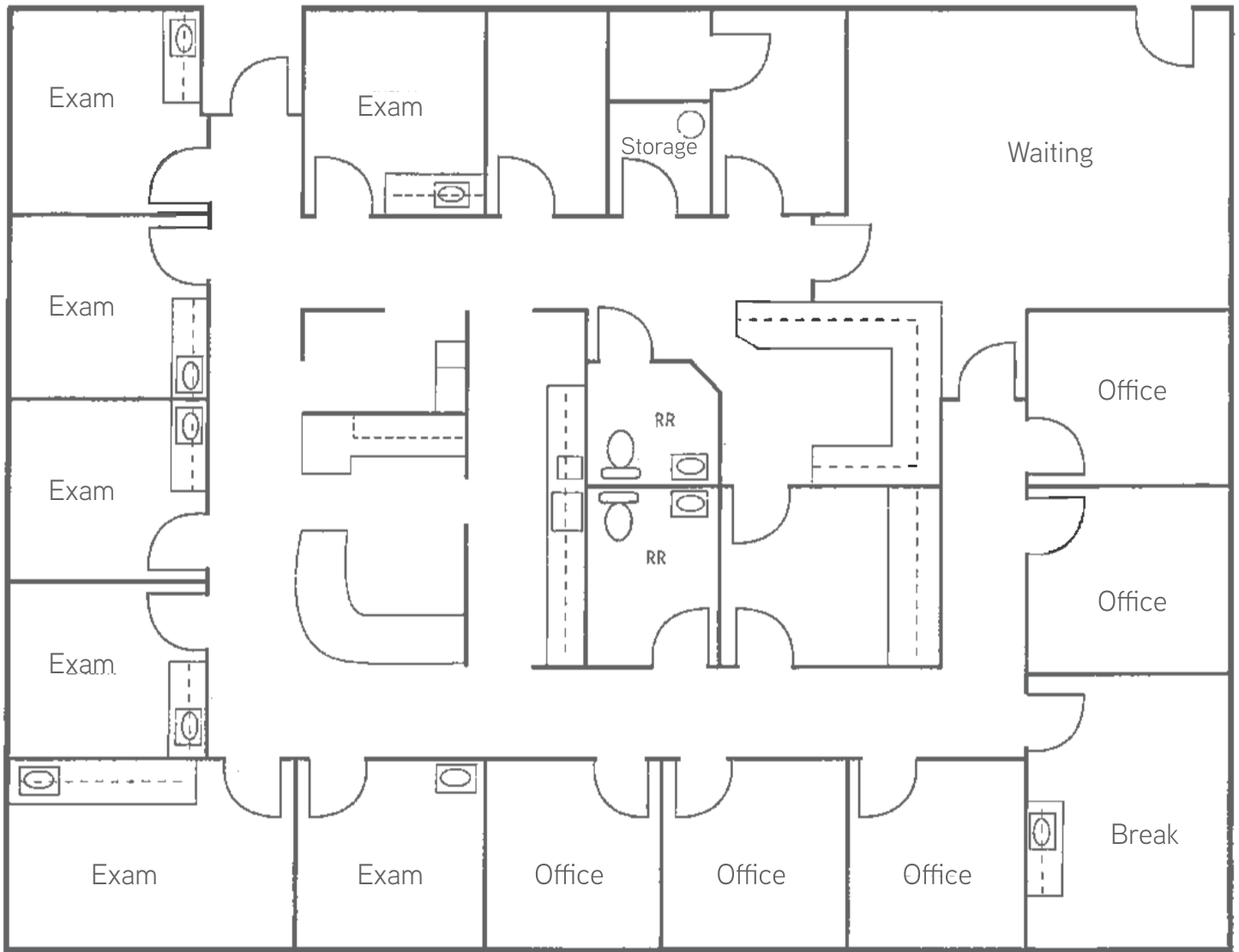


SUITE 203



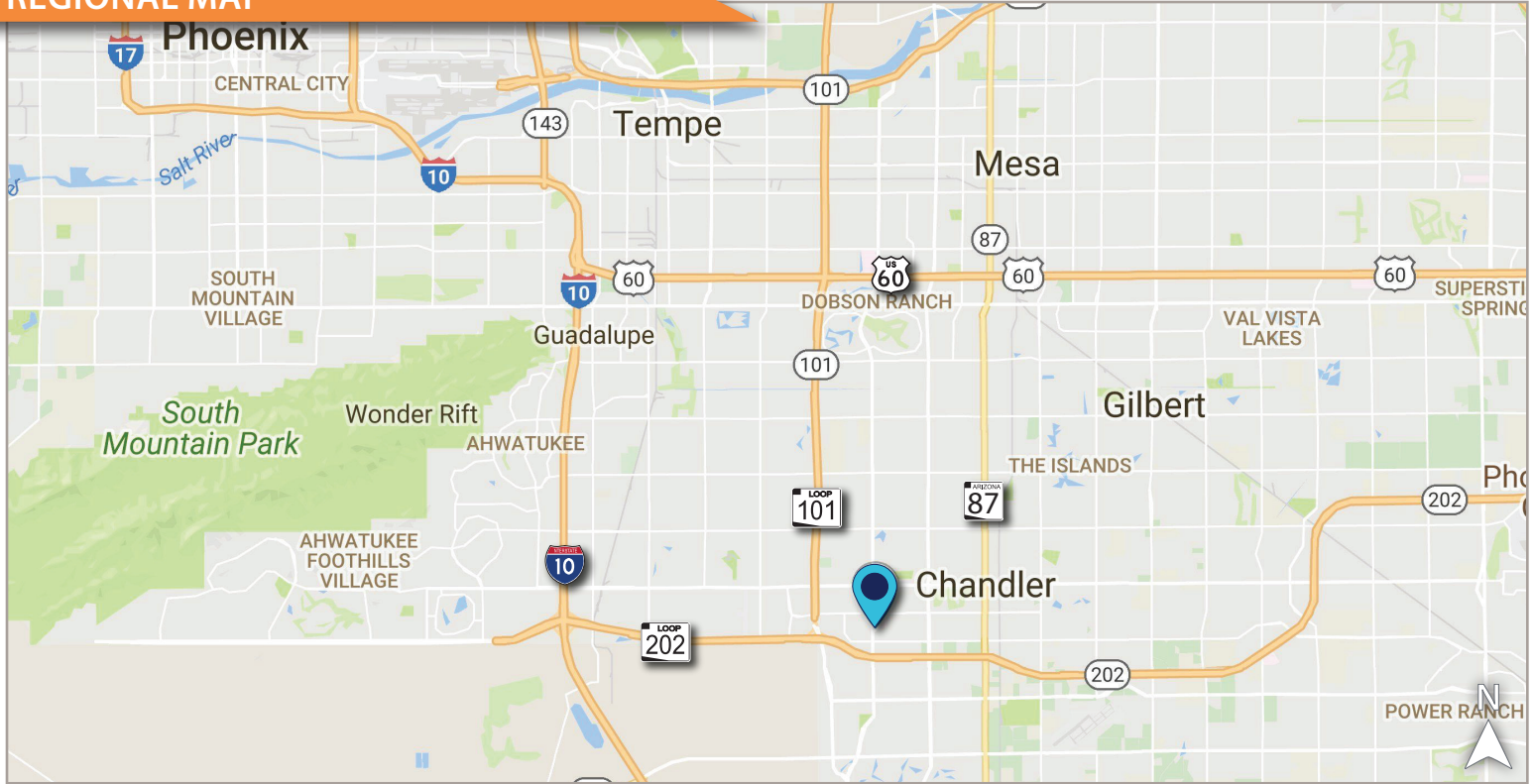
Existing Floor Plan

SUITE 203



Conceptual Floor Plan

REGIONAL MAP



AERIAL

