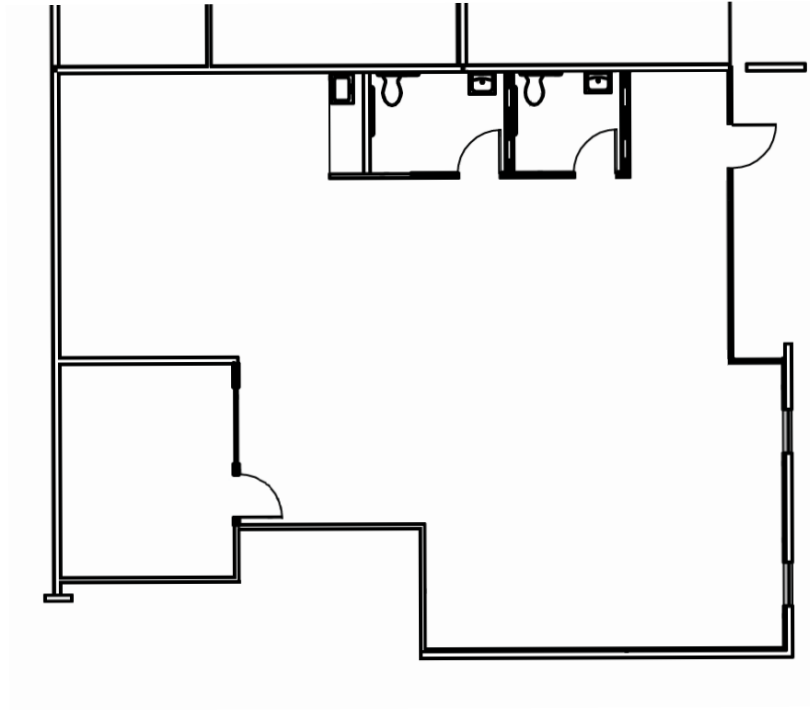


**2,045 SF OFFICE SPACE AVAILABLE
BUILDING 3, SUITE 300**

11912 NE 95TH STREET, SUITE 300, VANCOUVER, WA 98682



**SUITE 300
HIGHLIGHTS & FEATURES**

- 1 Private Office
- Large, Open Creative Office
- Corner Suite
- Coffee Bar
- On-Site Property Management
- Restaurants and Retail Amenities nearby:
Los Jalapenos, Columbia Credit Union,
Papa John's Pizza, Chevron & Many More
- Ample Parking

Available: Now



paddencp.com

OWNED & MANAGED BY:

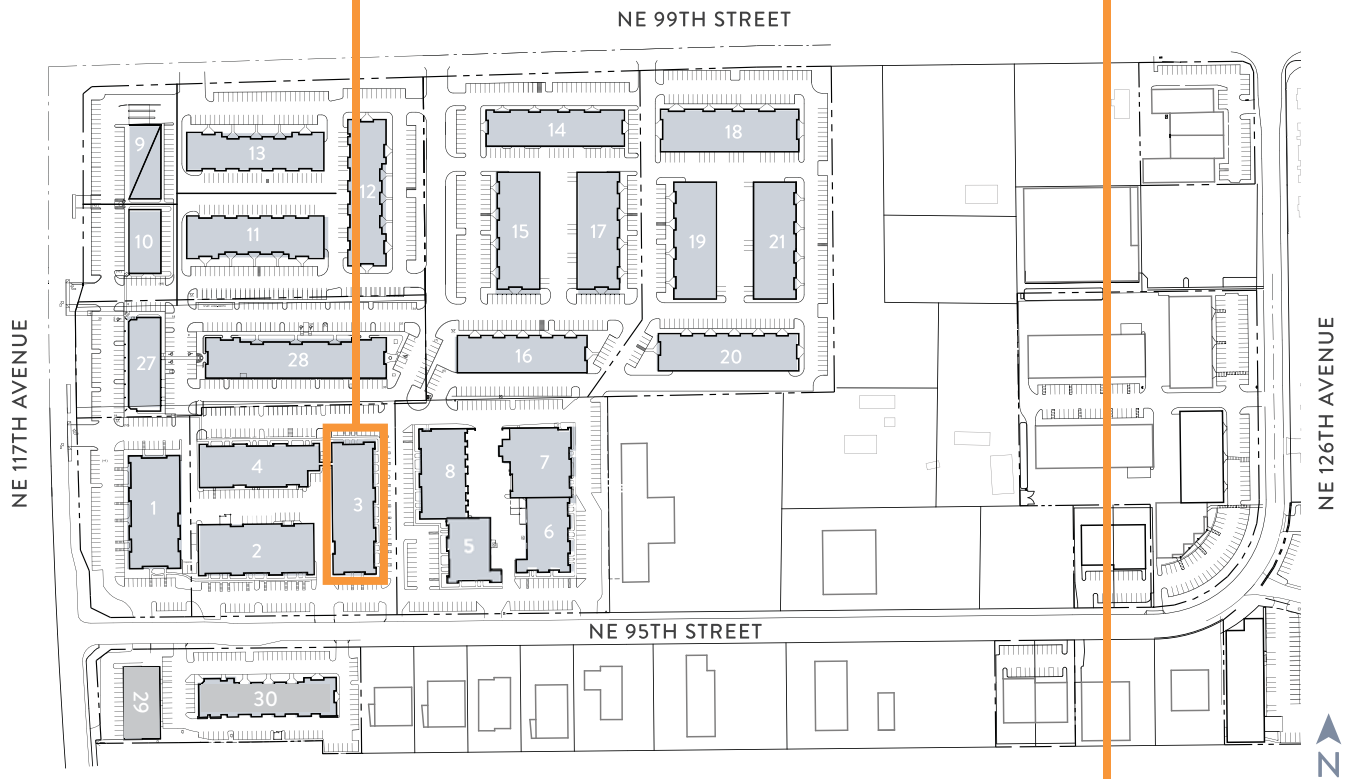


**Columbia
Commercial**
Commercial Leasing | Sales | Property Management

WESTCORE
PROPERTIES

NOW AVAILABLE! BUILDING 3, SUITE 300

11912 NE 95th Street, Suite 300, Vancouver, WA 98682



LEASING CONTACTS

Coleman Brown

Columbia Commercial, LLC

Coleman@CCPprop.com

360.735.8001

Dave Brown, CCIM, SIOR

Columbia Commercial, LLC

Dave@CCPprop.com

360.735.8001

paddencp.com

