

# SHOVEL READY INDUSTRIAL SITE

EXCLUSIVE LISTING | ASH AVENUE & FLORENCE STREET | CASA GRANDE, ARIZONA

Clayton Rd

**LOCATION** NWC Ash Avenue & Florence Street, Casa Grande, Arizona

**SIZE** ±34.03 acres

**PARCELS** 507-12-025G, 507-12-025H

**ASKING PRICE** \$2,800,000

**ZONING** I-1, Industrial

**TAXES** \$19,407.56 (2018)

## COMMENTS

- Shovel ready
- Hard zoned
- Located next to Daisy Brand; Monsanto
- Proximity to Interstate 8 (±3 miles south) and Interstate 10 (±5 miles east)
- Strong recent industrial activity in the area
- Low trucking rates in the area
- Eligible for new market tax credits
- Included in the Arizona Commerce Authority Opportunity Zone. [Click here for more information.](#)



Kirk McCarville | [kmccarville@landadvisors.com](mailto:kmccarville@landadvisors.com)

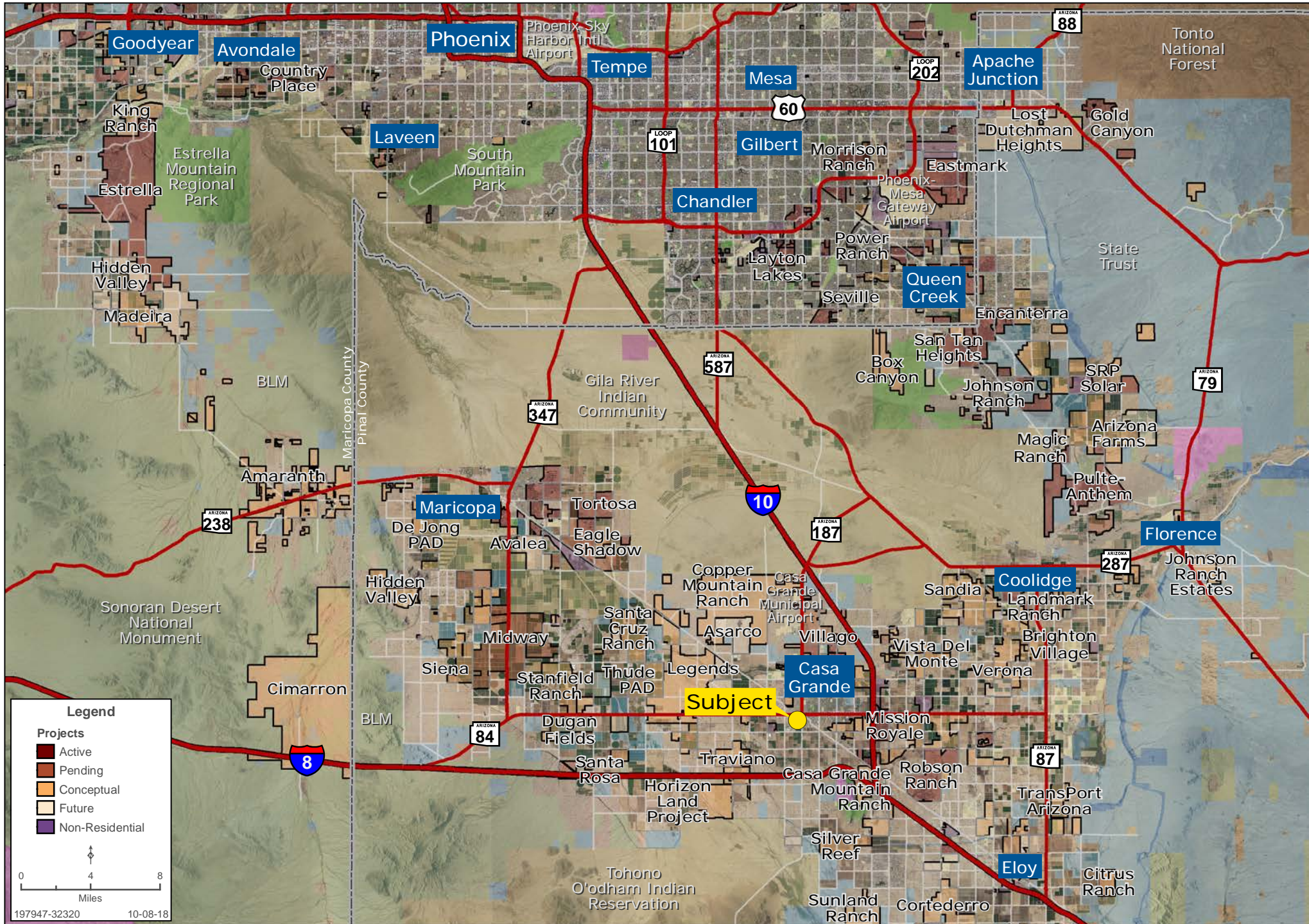
442 W. Kortsen Road, Suite 203, Casa Grande, Arizona 85122 ph. 520.251.0348 | [www.landadvisors.com](http://www.landadvisors.com)

The information contained herein is from sources deemed reliable. We have no reason to doubt its accuracy but do not guarantee it. It is the responsibility of the person reviewing this information to independently verify it. This package is subject to change, prior sale or complete withdrawal. AZPinal197947 - 6.28.19



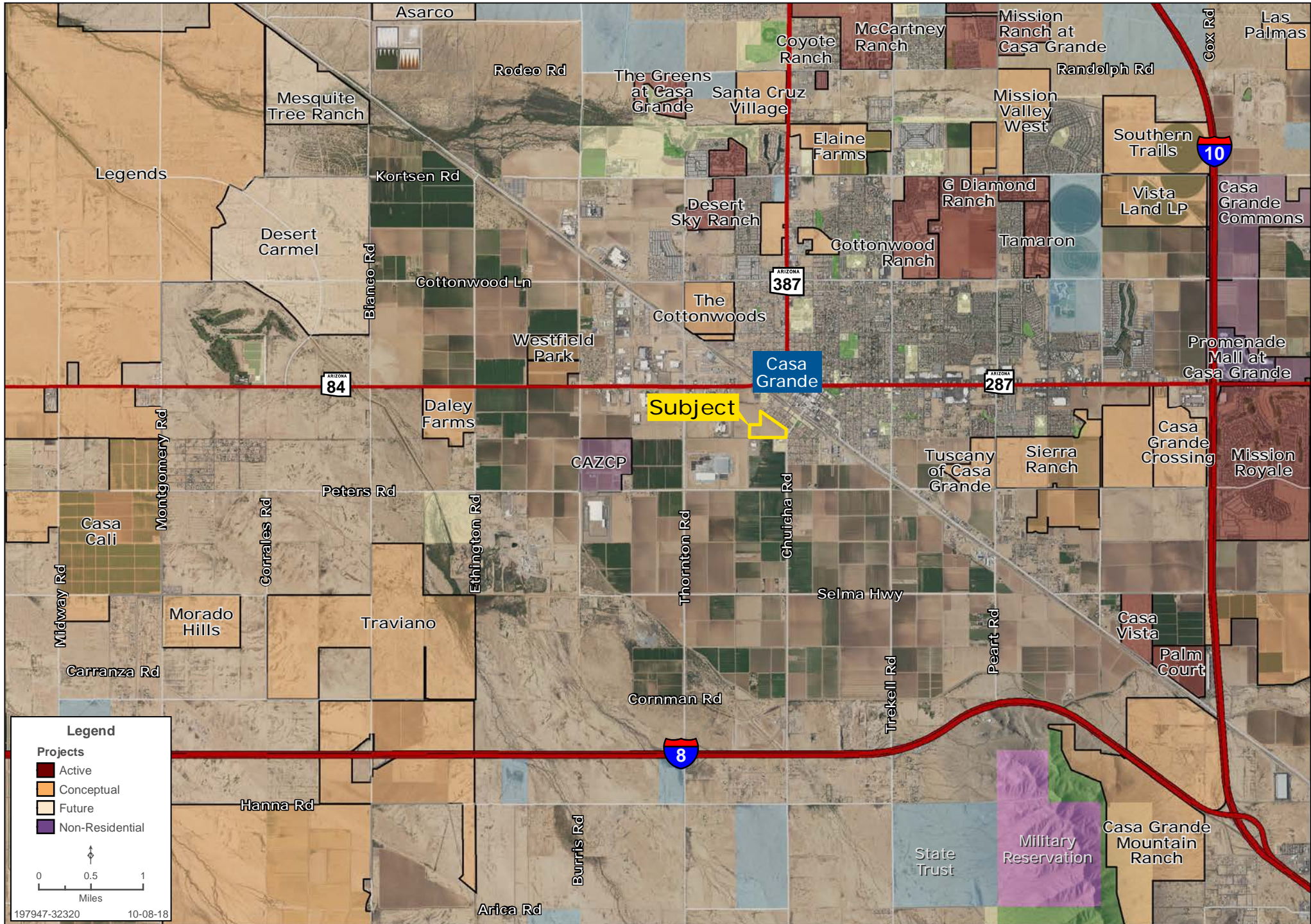
# REGIONAL MAP

Kirk McCarville | 480.483.8100 | www.landadvisors.com



# SURROUNDING DEVELOPMENT MAP

Kirk McCarville | 480.483.8100 | www.landadvisors.com



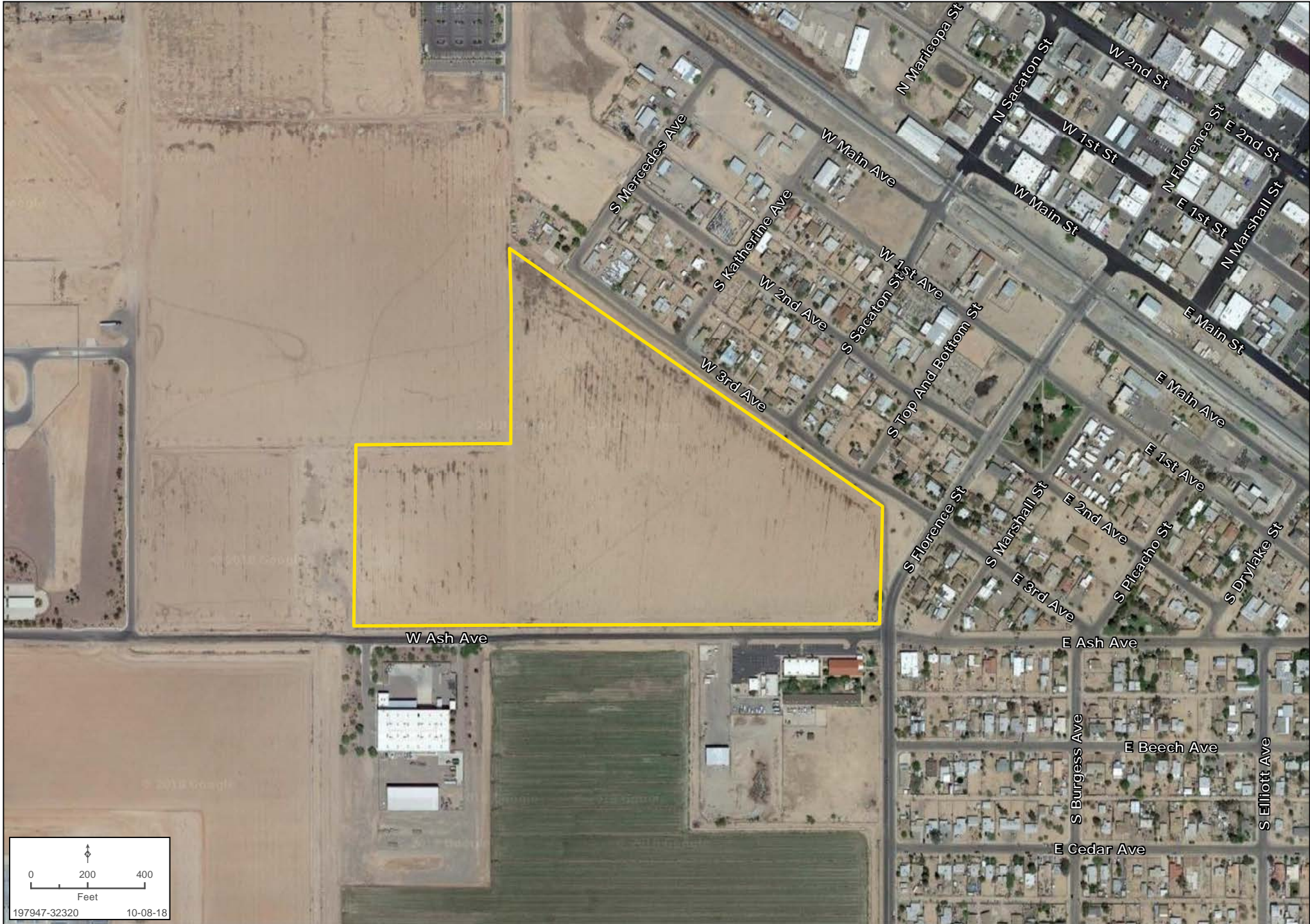
# CAZCP CORPORATE NEIGHBORS MAP

Kirk McCarville | 480.483.8100 | www.landadvisors.com



# PROPERTY DETAIL MAP

Kirk McCarville | 480.483.8100 | www.landadvisors.com



0 200 400  
Feet  
197947-32320 10-08-18