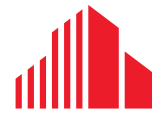


# 275 CANAL STREET

THE GATEWAY TO SOHO



CUSHMAN & WAKEFIELD



FOR MORE INFORMATION, PLEASE CONTACT:

**JIMMY GIATTINO**

212 841 7684

[jimmy.giattino@cushwake.com](mailto:jimmy.giattino@cushwake.com)

**WILL YEATMAN**

212 841 7681

[will.yeatman@cushwake.com](mailto:will.yeatman@cushwake.com)

**Cushman & Wakefield**

1290 Avenue of Americas

New York, NY 10104

[cushmanwakefield.com](http://cushmanwakefield.com)



CUSHMAN & WAKEFIELD

A commission computed and earned in accordance with the rates and conditions of our agency agreement with our principal. The depiction in the above photograph of any person, entity, sign, logo or property (other than Cushman & Wakefield's client and the property offered by Cushman & Wakefield) is incidental only, and is not intended to connote any affiliation, connection, association, sponsorship or approval by or between that which is incidentally depicted and Cushman & Wakefield or its client when received from our principal, will be paid to a cooperating broker who consummates a closing and transfer of title between our principal and purchaser. (A copy of the rates and conditions referred to above are available upon request.)



## THE GATEWAY TO SOHO

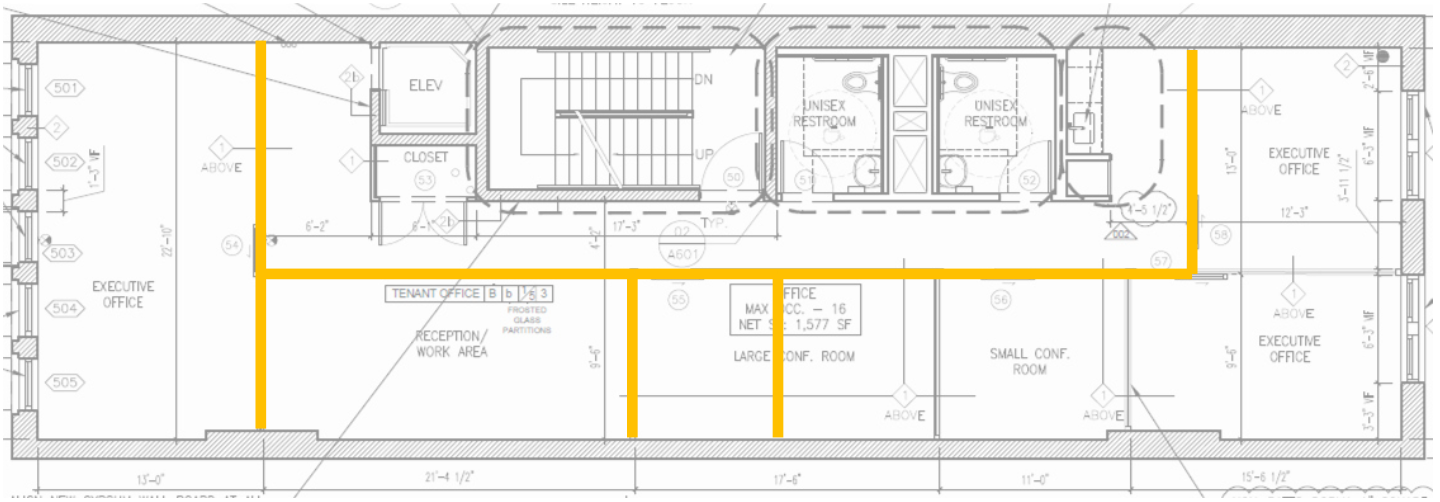
- Turn key office space
- Newly renovated lobby
- Private roof deck for 5th floor tenant
- 1 kitchen and 2 ADA compliant private restrooms on each floor
- Virtual doorman service with keyless entry

FLOOR	AREA
Entire 5	2,550 RSF
Entire 4	2,550 RSF
Entire 3	2,550 RSF
<b>TOTAL</b>	<b>7,650 RSF</b>

<b>RENT:</b> Available upon request
<b>POSSESSION:</b> Immediate
<b>TERM:</b> Flexible - will consider as short as 1 month

## ENTIRE 5<sup>TH</sup> FLOOR - 2,550 RSF

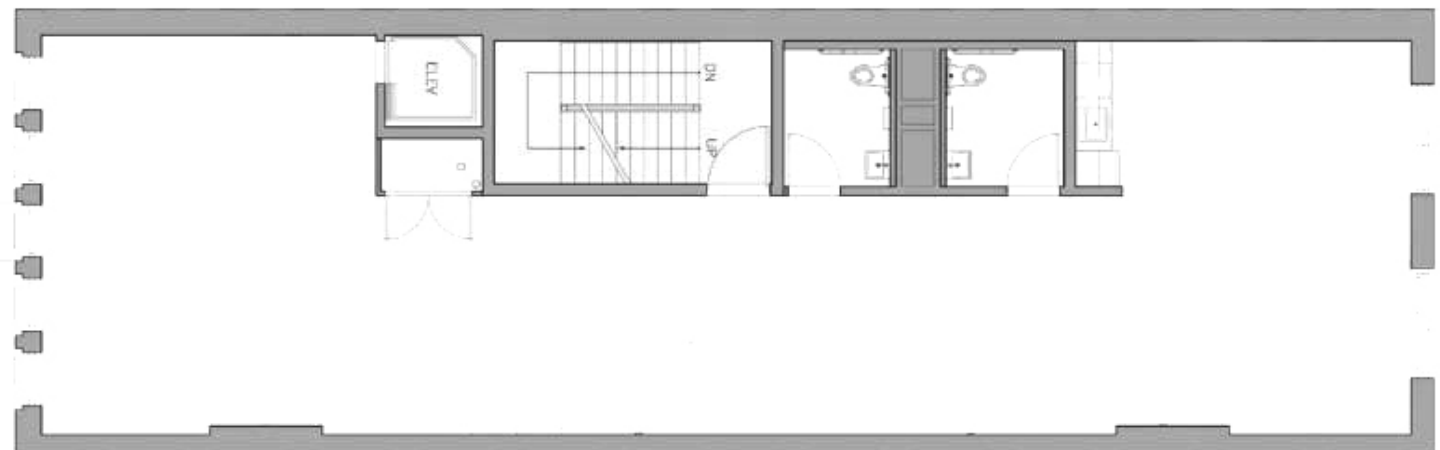
Yellow lines represent glass partition walls



## ENTIRE 4<sup>TH</sup> FLOOR - 2,550 RSF



## ENTIRE 3<sup>RD</sup> FLOOR - 2,550 RSF



# TRANSPORTATION MAP

275 CANAL STREET



## FOR MORE INFORMATION, PLEASE CONTACT:

**JIMMY GIATTINO**  
212 841 7684  
jimmy.giattino@cushwake.com

**WILL YEATMAN**  
212 841 7681  
will.yeatman@cushwake.com

**Cushman & Wakefield**  
1290 Avenue of Americas  
New York, NY 10104  
cushmanwakefield.com



A commission computed and earned in accordance with the rates and conditions of our agency agreement with our principal. The depiction in the above photograph of any person, entity, sign, logo or property (other than Cushman & Wakefield's client and the property offered by Cushman & Wakefield) is incidental only, and is not intended to connote any affiliation, connection, association, sponsorship or approval by or between that which is incidentally depicted and Cushman & Wakefield or its client when received from our principal, will be paid to a cooperating broker who consummates a closing and transfer of title between our principal and purchaser. (A copy of the rates and conditions referred to above are available upon request.)