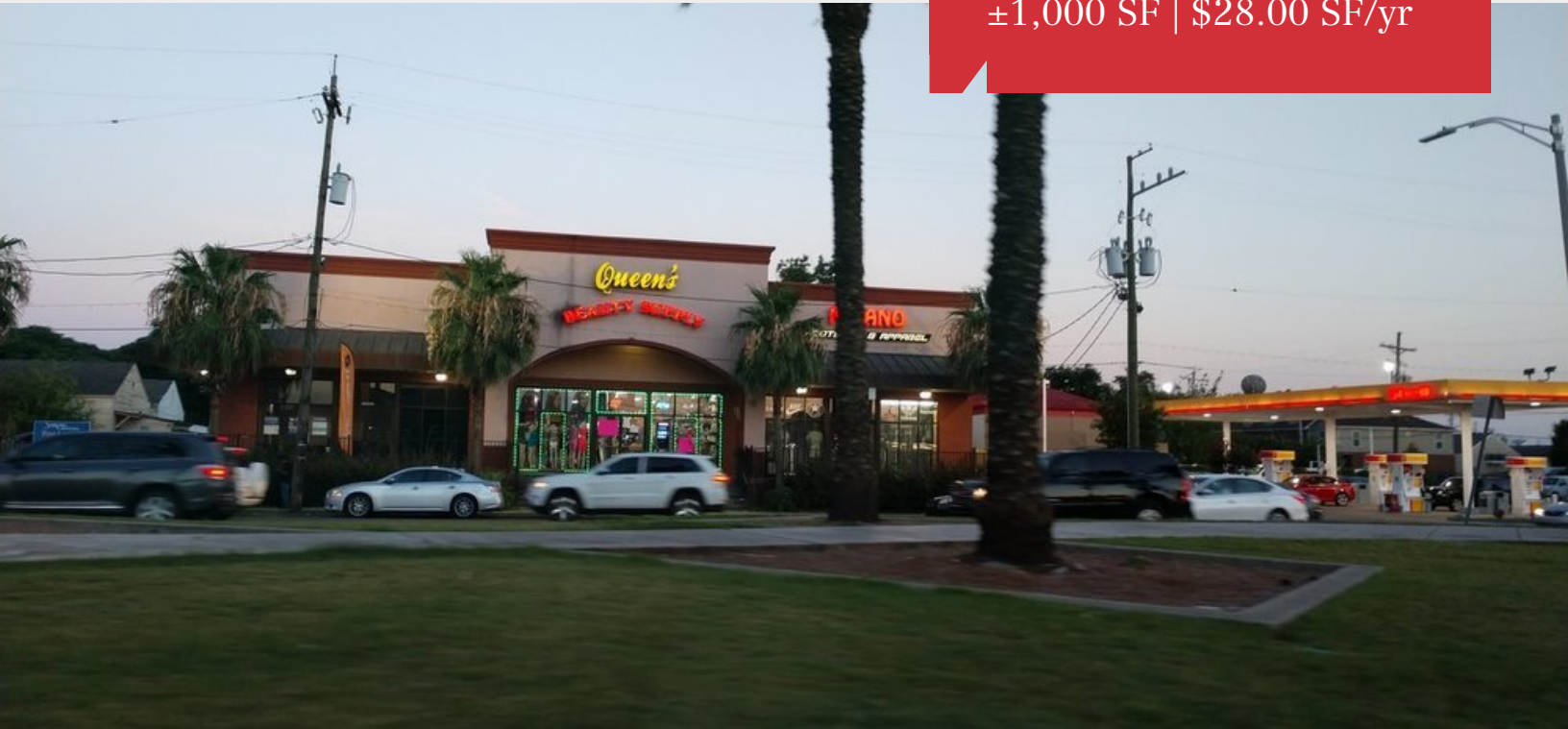


For Lease

## Retail Property

±1,000 SF | \$28.00 SF/yr



## 2122 S. Claiborne Avenue

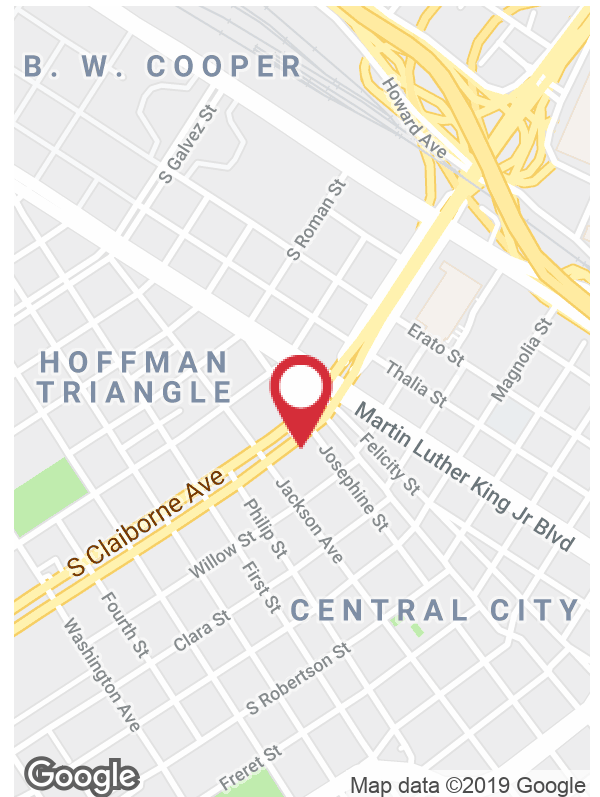
New Orleans, Louisiana 70113

### Property Highlights

- ±1,000 SF neighborhood retail center space available for lease
- Suite 3 is situated on the corner, with great visibility on Claiborne Avenue and Josephine Street
- High daily traffic carrying approximately 69,000 vehicles per day
- Current tenants at Uptown Plaza include Milano Footwear and Apparel, Queen's Beauty Supply, Madalena Nails and Boost Mobile

### Lease Rate

\$2,333 per month (NNN)



CALL OR EMAIL FOR MORE INFORMATION

For more information

**Judy Slack**

O: 504 569 9452 | C: 504 881 7337  
jslack@latterblum.com

NO WARRANTY OR REPRESENTATION, EXPRESS OR IMPLIED, IS MADE AS TO THE ACCURACY OF THE INFORMATION CONTAINED HEREIN, AND THE SAME IS SUBMITTED SUBJECT TO ERRORS, OMISSIONS, CHANGE OF PRICE, RENTAL OR OTHER CONDITIONS, PRIOR SALE, LEASE OR FINANCING, OR WITHDRAWAL WITHOUT NOTICE, AND OF ANY SPECIAL LISTING CONDITIONS IMPOSED BY OUR PRINCIPALS NO WARRANTIES OR REPRESENTATIONS ARE MADE AS TO THE CONDITION OF THE PROPERTY OR ANY HAZARDS CONTAINED THEREIN ARE ANY TO BE IMPLIED. LICENSED IN LOUISIANA.

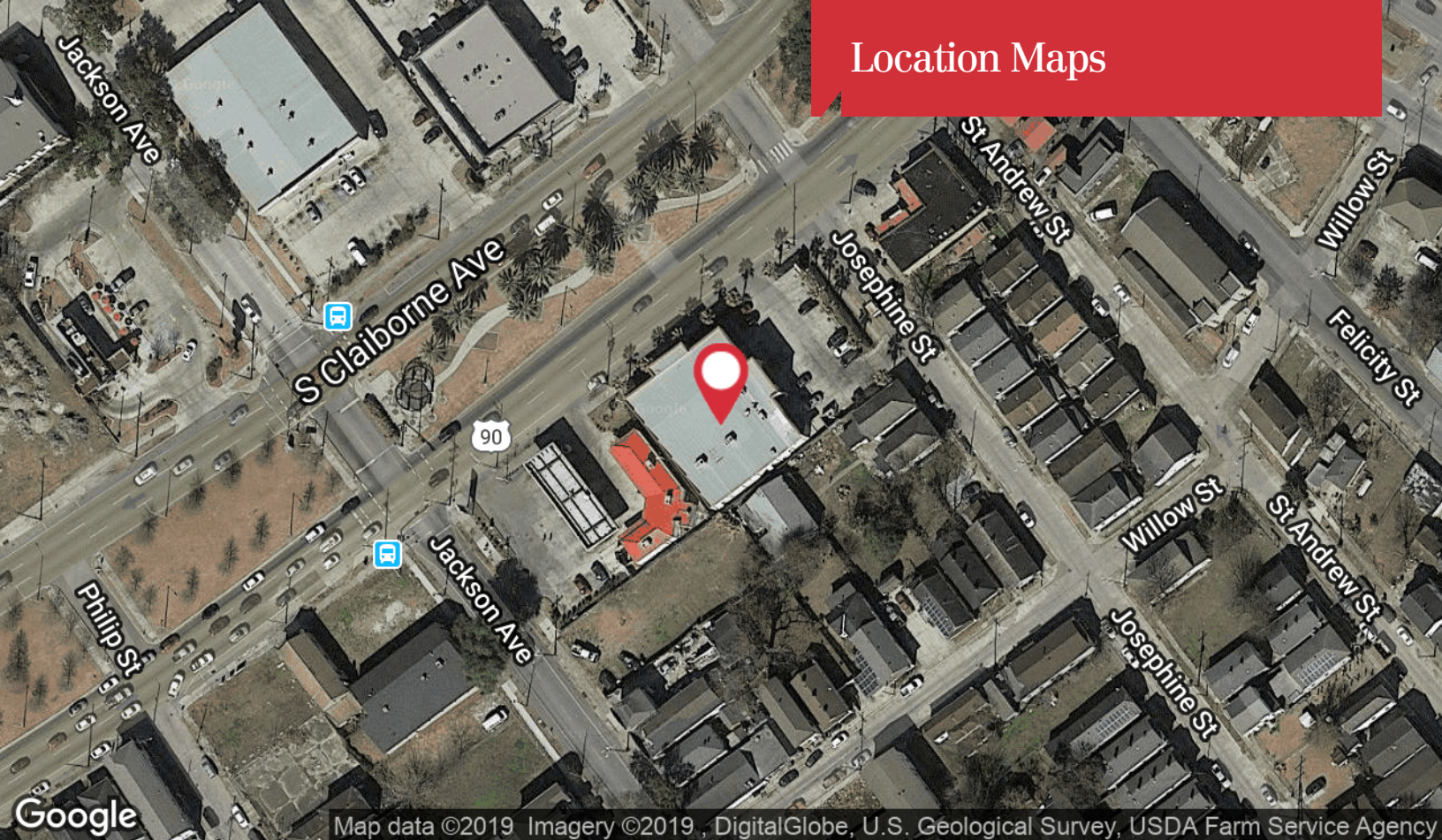
430 Notre Dame Street  
New Orleans, LA 70130  
504 525 1311 tel  
**latterblum.com**

## Additional Photos

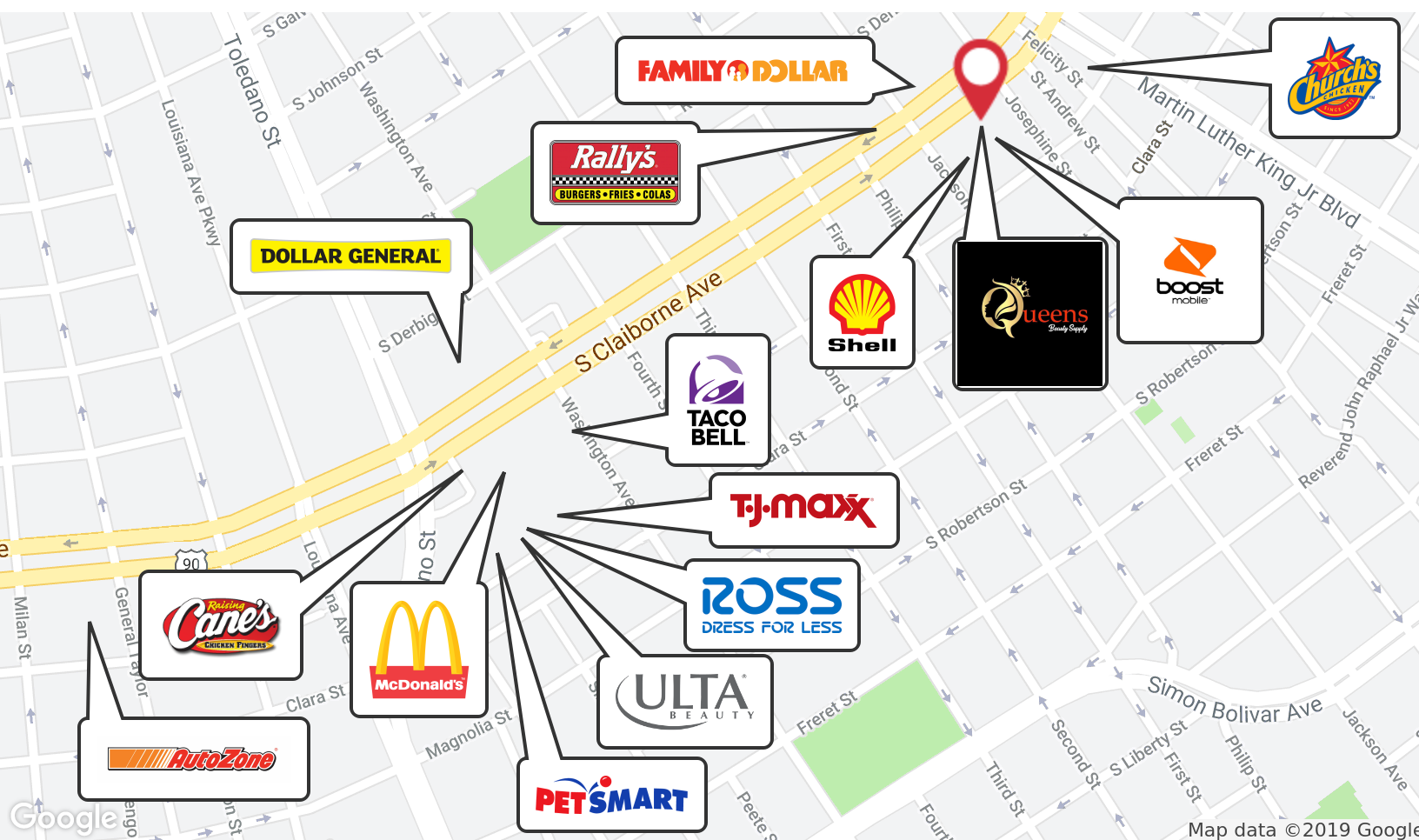




# Location Maps



Map data ©2019 Imagery ©2019 DigitalGlobe, U.S. Geological Survey, USDA Farm Service Agency



Map data ©2019 Google

430 Notre Dame Street  
New Orleans, LA 70130  
504 525 1311 tel  
[latterblum.com](http://latterblum.com)