

FOR LEASE

Howard County, MD

WAVERLY WOODS

10707 - 10753 BIRMINGHAM WAY | WOODSTOCK, MARYLAND 21163

AVAILABLE

Suite 21B-25B: 983 - 1,996 sf

Suite 53B: 2,374 sf

TERM

3 year minimum

PARKING RATIO

3.3:1,000 sf

OCCUPANCY

Immediate

RENTAL RATE

\$18.95 sf/MG

HIGHLIGHTS

- ▶ Great views of Waverly Woods Golf Course
- ▶ Complimentary Tenant access to Waverly Wood Golf Club pool, tennis court and clubhouse
- ▶ Numerous restaurants and services within walking distance
- ▶ Serene neighborhoods with "country" feel
- ▶ Minutes from Turf Valley with close proximity to I-70 and Rt. 29

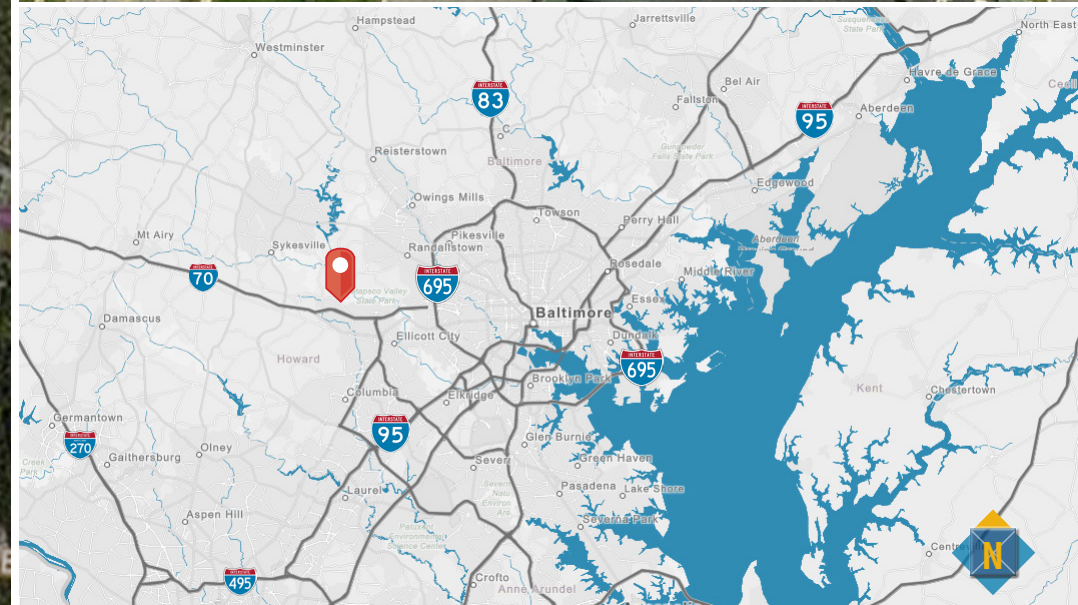
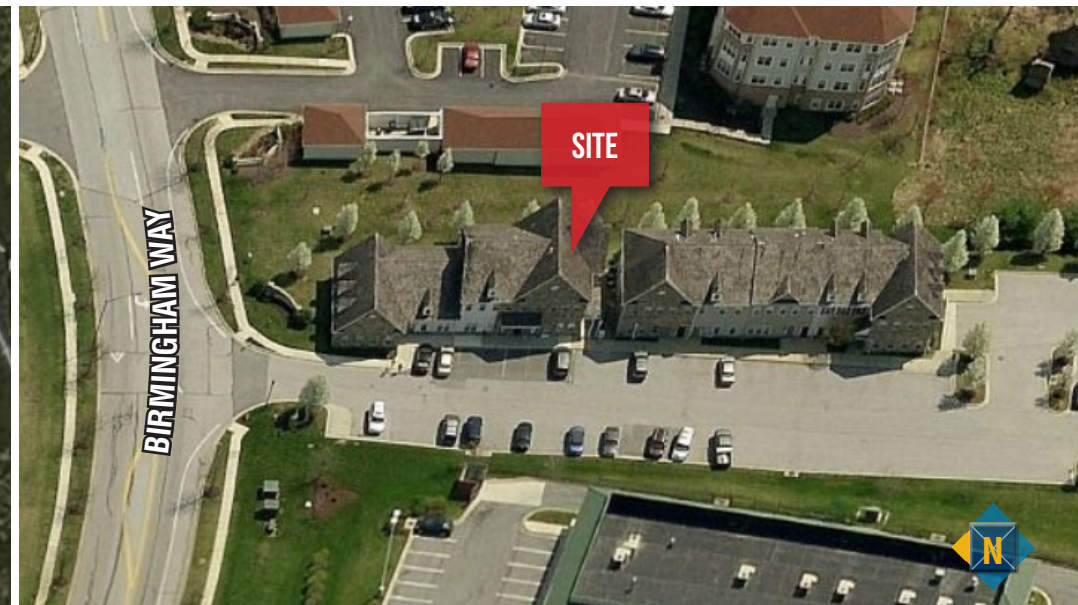


FOR LEASE

Howard County, MD

LOCATION

WAVERLY WOODS | 10707- 10753 BIRMINGHAM WAY | WOODSTOCK, MARYLAND 21163

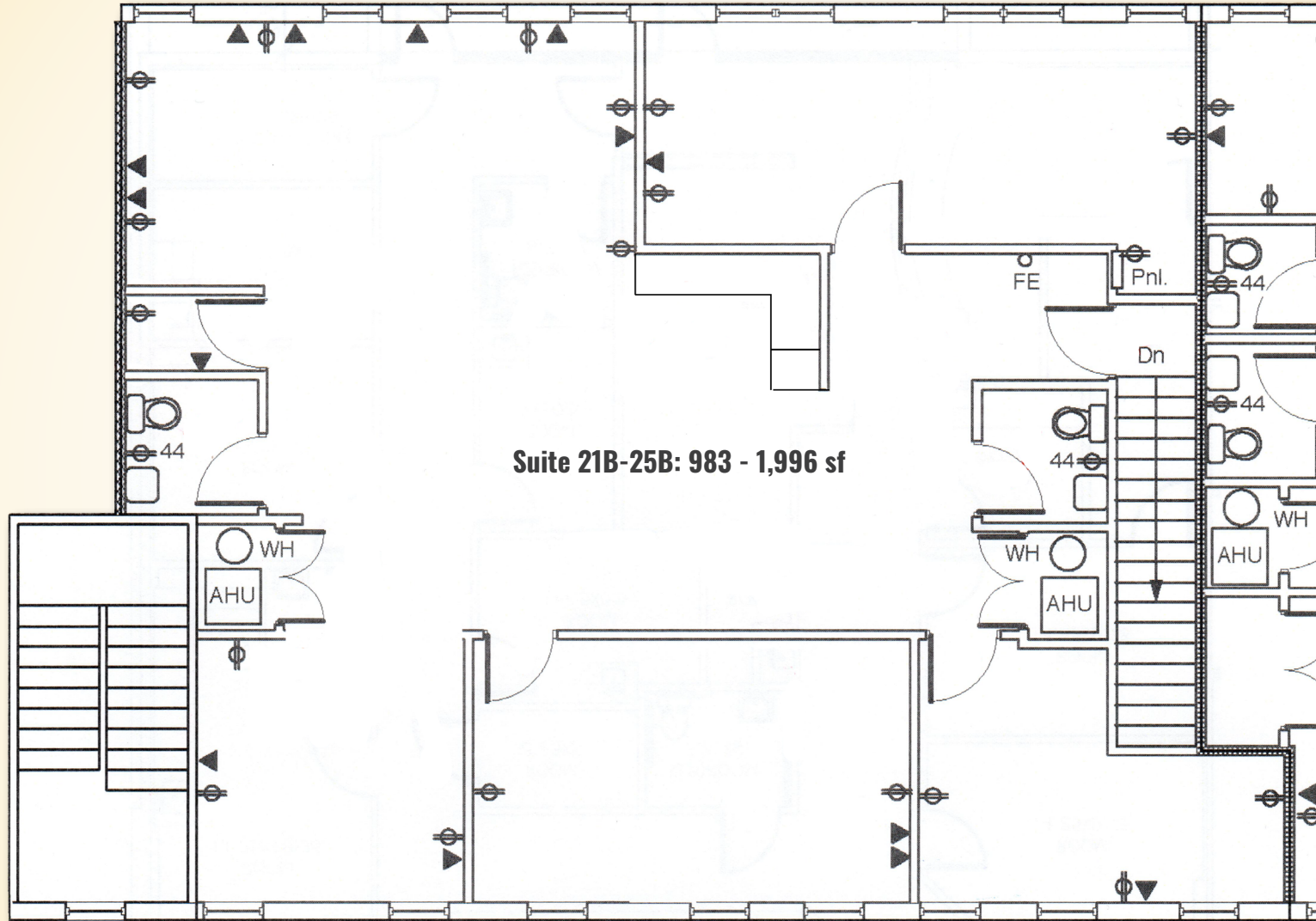


FOR LEASE

Baltimore County, MD

FLOOR PLAN

WAVERLY WOODS | 10707- 10753 BIRMINGHAM WAY | WOODSTOCK, MARYLAND 21163



Suite 21B-25B: 983 - 1,996 sf

FOR LEASE

Baltimore County, MD

FLOOR PLAN

WAVERLY WOODS | 10707- 10753 BIRMINGHAM WAY | WOODSTOCK, MARYLAND 21163

