



dhrealty partners inc

COMMERCIAL PROPERTIES

Brokerage • Management • Investments • Accounting



Michael D. Hoover, CSM
210.218.9095
hoover@dhrp.us



John Cannon, CCIM
210.386.6410
cannon@dhrp.us



Morgan Cannon Diaz
210.836.8990
morgan@dhrp.us

SOUTHTOWN MULTI-FAMILY / MIXED-USE (UP TO 30 APARTMENT UNITS) DEVELOPMENT READY

1915 S Presa St | San Antonio, TX 78210



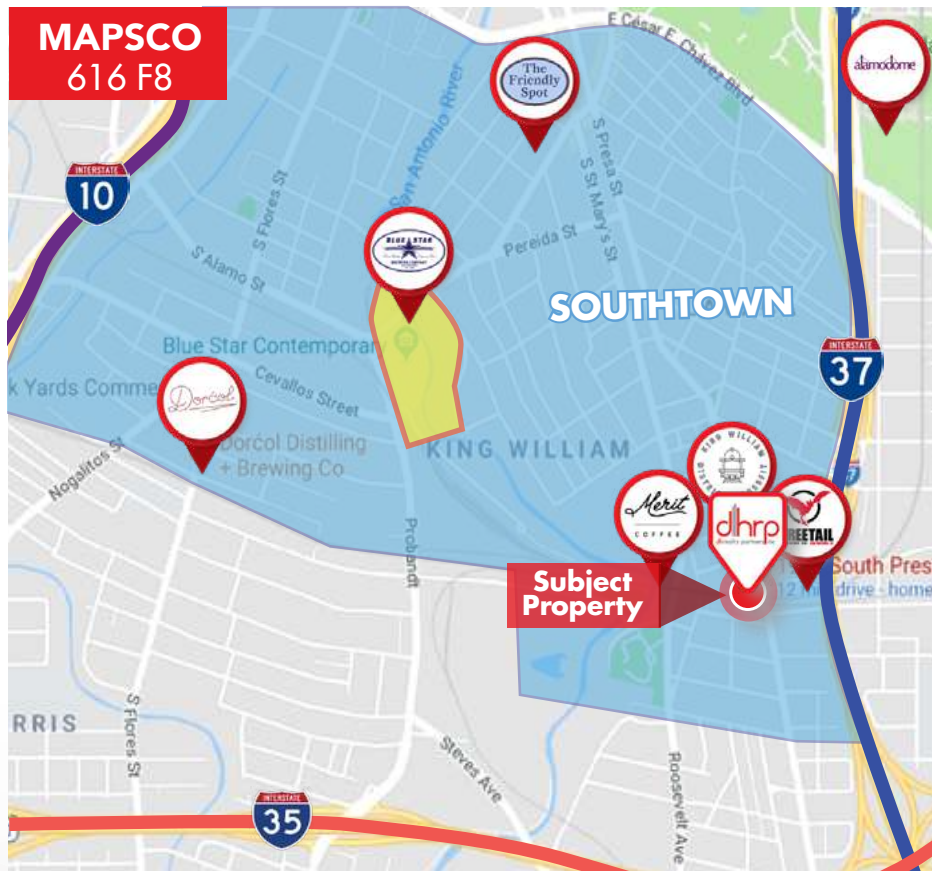
INVESTMENT OPPORTUNITY LAND

FOR SALE

(RENDERINGS OF MIXED-USE FOR ILLUSTRATION PURPOSES ONLY)

SOUTHTOWN MULTI-FAMILY / MIXED-USE

1915 S Presa St | San Antonio, TX 78210



MAPSCO
616 F8

DESCRIPTION

Former "Buggy Warehouse" land available for sale. Surrounded by major multi-family commercial development and the trendy restaurant / bar scene.

LAND SIZE

± 0.429 AC

HIGHLIGHTS

- **NEW MULTI-FAMILY** (Average Rents: **\$1.77 - \$2.35 / SF / MO**)
- **DEVELOPMENT READY!** Up to 200 FT in height
- Great visibility
- **Up to 30 apartment units**
- Project is eligible to receive **City financial incentives**
- **100% Architectural plans for development of five, 3-story live/work buildings**
- Adjacent to **Fretail Brewing Co**
- Easy access to IH-37 & IH-10
- Located in an area of rapid multifamily development
- **Not in any Historic District**
- Close proximity to major points of interest such as: **River Walk, Mission Trail, Blue Star Arts Complex, King William, Downtown, Alamo, Tower of the Americas, and the Southtown restaurant / bar scene.**

ZONING

IDZ - Infill Development Zone, City of San Antonio
AHOD - Airport Hazard Overlay District, City of San Antonio
C-2 - Commercial District, City of San Antonio
High Density Mixed-Use

PRICE

Contact brokers for further information.

LOCATION

Property is located next to IH-37 on South Presa Street, conveniently placed next to the coveted art zone of the city, **Southtown**.

The information herein was obtained from sources deemed reliable; however, DH Realty Partners, Inc. makes no guarantees, warranties, or representations as to the completeness of accuracy thereof. The presentation of this property is submitted subject to errors, omissions, changes of price, prior to sale or lease, or withdrawal without notice. All Floor plans, property lines, areas, and dimensions are approximate and for illustration purposes only. DHRP | DH Realty Partners, Inc. ©2019. A Texas Corporation.



Michael D. Hoover, CSM
210.218.9095
hoover@dhrp.us

John Cannon, CCIM
210.386.6410
cannon@dhrp.us

Morgan Cannon Diaz
210.836.8990
morgan@dhrp.us

SALE

SOUTHTOWN MULTI-FAMILY / MIXED-USE

1915 S Presa St | San Antonio, TX 78210

AERIAL



POINTS OF INTEREST

- Alamodome
- Bar America
- Blue Star Arts Complex
- Cevallos Lofts
- Downtown
- Dorcol Distilling + Brewing Co
- Friendly Spot
- Freetail Brewery
- Hemisfair Park
- Historic Market Square
- Hot Joy
- King William Crossfit
- La Burgerteca
- La Villita
- Liberty Bar
- Merit Coffee
- River Walk Mission Trail
- Rosario's
- Southtown
- Southtown 101
- Taco Haven
- Tower of the Americas



The information herein was obtained from sources deemed reliable; however, DH Realty Partners, Inc. makes no guarantees, warranties, or representations as to the completeness of accuracy thereof. The presentation of this property is submitted subject to errors, omissions, changes of price, prior to sale or lease, or withdrawal without notice. All Floor plans, property lines, areas, and dimensions are approximate and for illustration purposes only. DHRP | DH Realty Partners, Inc. ©2019. A Texas Corporation.



Michael D. Hoover, CSM
210.218.9095
hoover@dhrp.us

John Cannon, CCIM
210.386.6410
cannon@dhrp.us

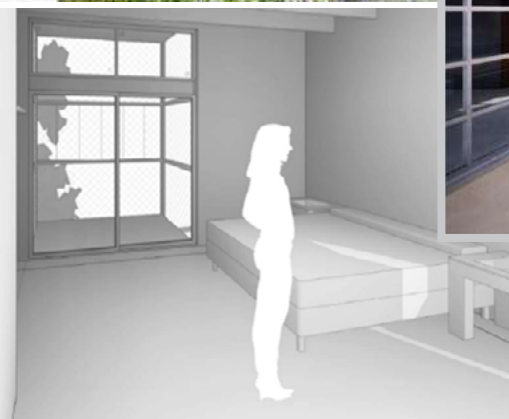
SALE
Morgan Cannon Diaz
210.836.8990
morgan@dhrp.us

SOUTHTOWN MULTI-FAMILY / MIXED-USE

1915 S Presa St | San Antonio, TX 78210

RENDERINGS OF LIVE/WORK CONCEPT

ARCHITECTURAL PLANS 100% COMPLETE



The information herein was obtained from sources deemed reliable; however, DH Realty Partners, Inc. makes no guarantees, warranties, or representations as to the completeness of accuracy thereof. The presentation of this property is submitted subject to errors, omissions, changes of price, prior to sale or lease, or withdrawal without notice. All Floor plans, property lines, areas, and dimensions are approximate and for illustration purposes only. DHRP | DH Realty Partners, Inc. ©2019. A Texas Corporation.

DHRP.us

210.222.2424

801 N. Saint Mary's

San Antonio, TX 78205



Michael D. Hoover, CSM
210.218.9095
hoover@dhrp.us

John Cannon, CCIM
210.386.6410
cannon@dhrp.us

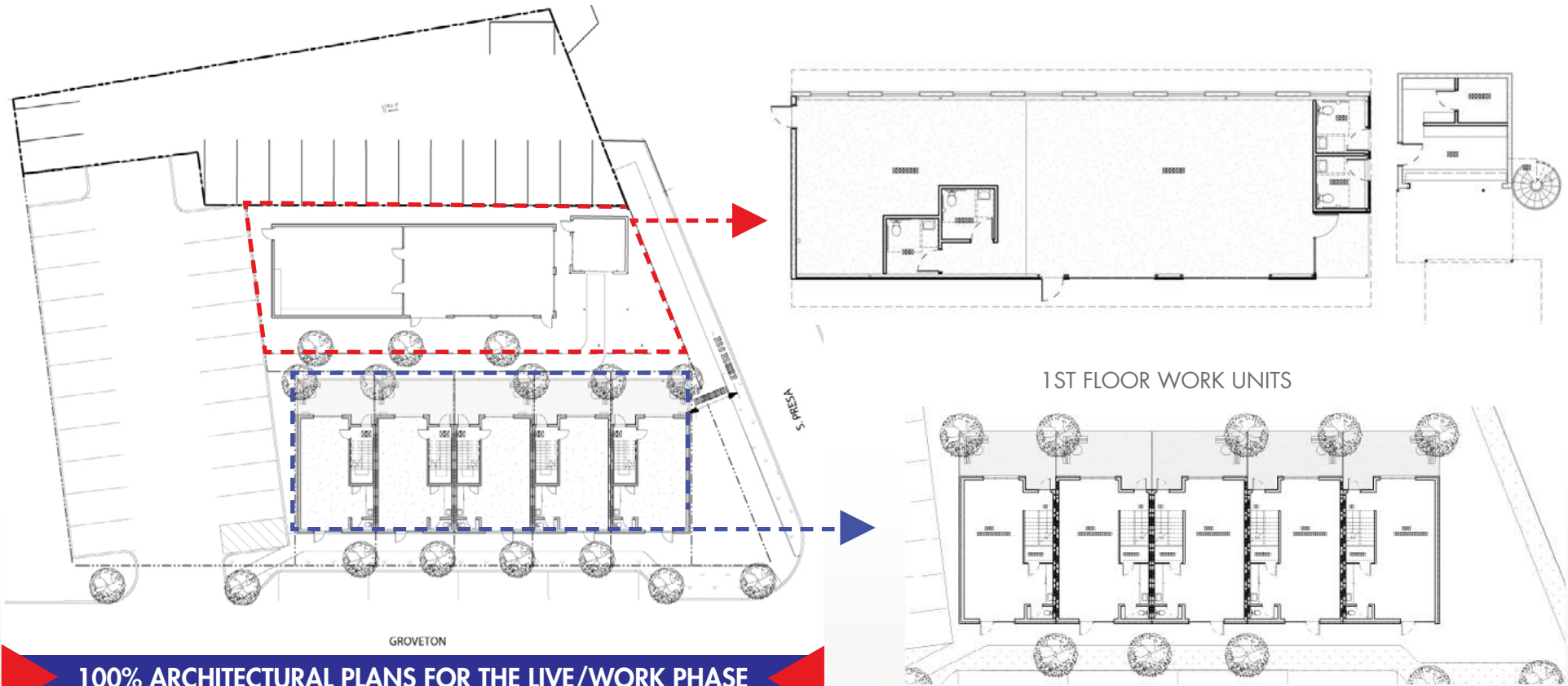
Morgan Cannon Diaz
210.836.8990
morgan@dhrp.us

SALE

SOUTHTOWN MULTI-FAMILY / MIXED-USE

1915 S Presa St | San Antonio, TX 78210

ILLUSTRATION OF MIXED-USE CONCEPT COMMERCIAL WITH LIVE/WORK APARTMENT UNITS



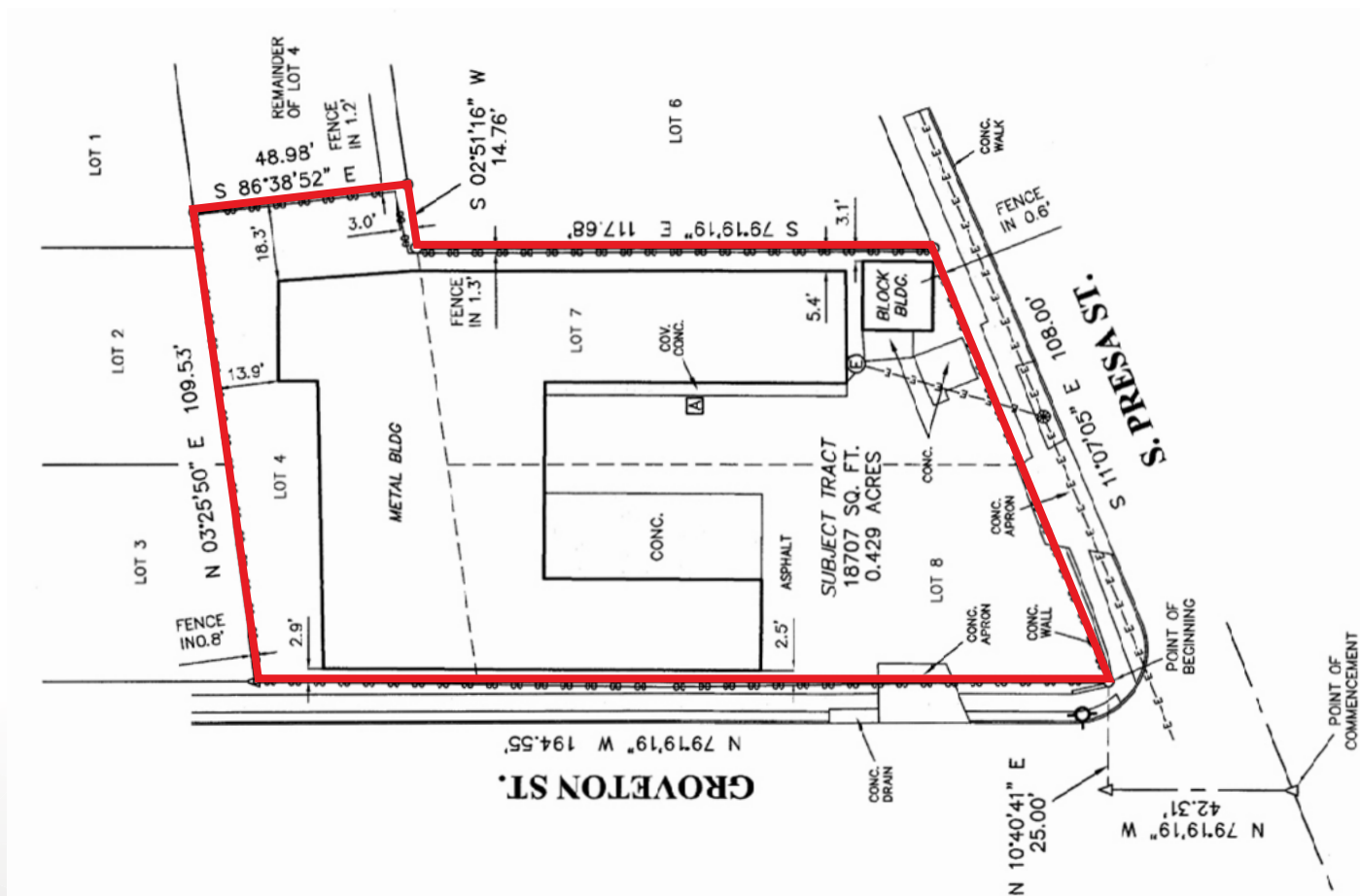
100% ARCHITECTURAL PLANS FOR THE LIVE/WORK PHASE

The information herein was obtained from sources deemed reliable; however, DH Realty Partners, Inc. makes no guarantees, warranties, or representations as to the completeness of accuracy thereof. The presentation of this property is submitted subject to errors, omissions, changes of price, prior to sale or lease, or withdrawal without notice. All Floor plans, property lines, areas, and dimensions are approximate and for illustration purposes only. DHRP | DH Realty Partners, Inc. ©2019. A Texas Corporation.

SOUTHTOWN MULTI-FAMILY / MIXED-USE

1915 S Presa St | San Antonio, TX 78210

SURVEY MAP

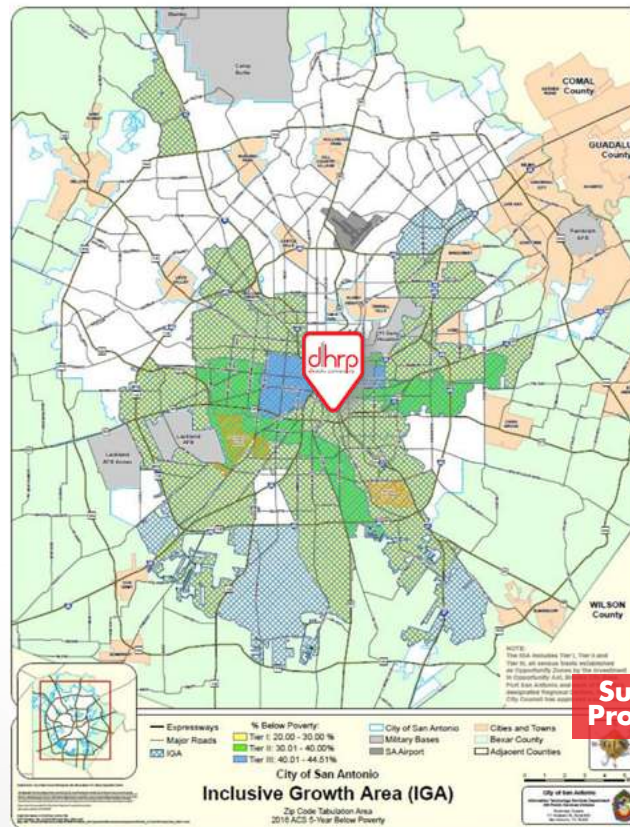
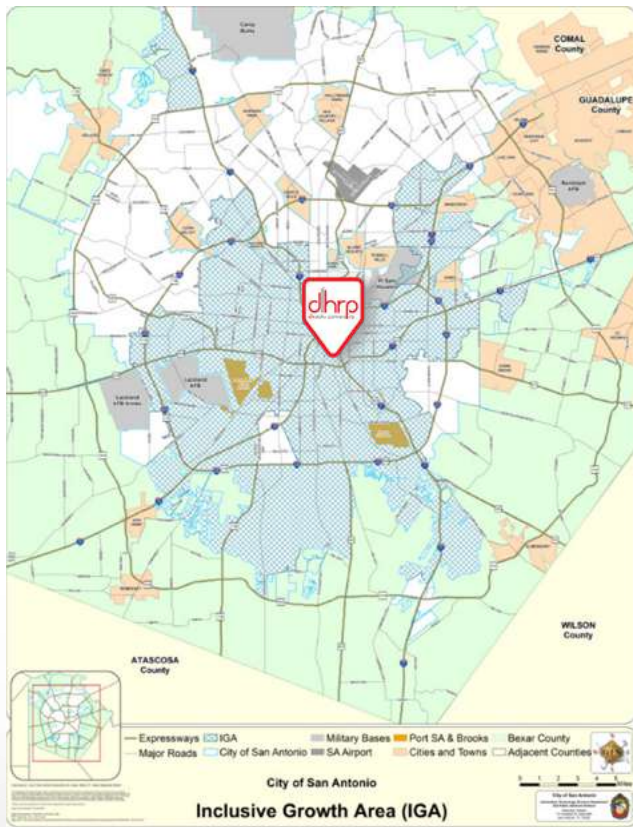


The information herein was obtained from sources deemed reliable; however, DH Realty Partners, Inc. makes no guarantees, warranties, or representations as to the completeness of accuracy thereof. The presentation of this property is submitted subject to errors, omissions, changes of price, prior to sale or lease, or withdrawal without notice. All Floor plans, property lines, areas, and dimensions are approximate and for illustration purposes only. DHRP | DH Realty Partners, Inc. ©2019. A Texas Corporation.

SOUTHTOWN MULTI-FAMILY / MIXED-USE

1915 S Presa St | San Antonio, TX 78210

INCLUSIVE GROWTH AREA (IGA)



City Council adopted the Inclusive Growth Area on December 13, 2018 as the focus for targeted investment, and for sourcing of job candidates and job training candidates.

This area includes Tier I, Tier II and Tier III, **Inner City**, Port San Antonio and each of the City's designated Regional Centers, as adopted in the SA Tomorrow Comprehensive Plan



The information herein was obtained from sources deemed reliable; however, DH Realty Partners, Inc. makes no guarantees, warranties, or representations as to the completeness of accuracy thereof. The presentation of this property is submitted subject to errors, omissions, changes of price, prior to sale or lease, or withdrawal without notice. All Floor plans, property lines, areas, and dimensions are approximate and for illustration purposes only. DHRP | DH Realty Partners, Inc. ©2019. A Texas Corporation.



Michael D. Hoover, CSM
210.218.9095
hoover@dhrp.us

John Cannon, CCIM
210.386.6410
cannon@dhrp.us

Morgan Cannon Diaz
210.836.8990
morgan@dhrp.us

SALE

SOUTHTOWN MULTI-FAMILY / MIXED-USE

1915 S Presa St | San Antonio, TX 78210

CITY INITIATED TAX INCREMENT REINVESTMENT ZONE (TIRZ)



TIRZ #11 - INNER CITY

Designated in 2000 to support redevelopment and public infrastructure improvements within the boundaries of the following three enterprise zones:

- 1) Enterprise Community Enterprise Zone
- 2) Eastside Enterprise Zone
- 3) Southside Enterprise Zone

These areas encompass portions of the City's downtown, east and south sides. The zone is approximately 2.5 square miles and is expected to capture \$16.5 million in tax increment in its life of 14.79 years.

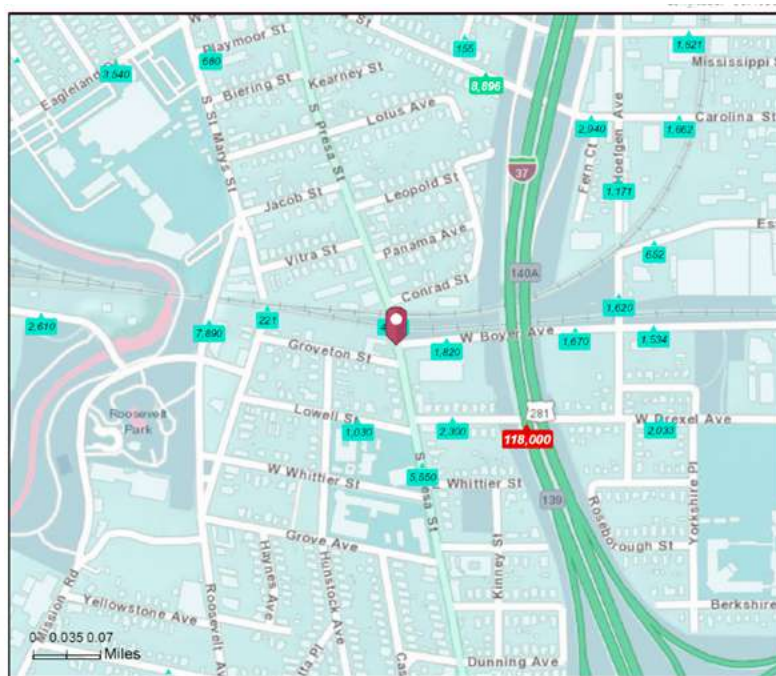
The information herein was obtained from sources deemed reliable; however, DH Realty Partners, Inc. makes no guarantees, warranties, or representations as to the completeness of accuracy thereof. The presentation of this property is submitted subject to errors, omissions, changes of price, prior to sale or lease, or withdrawal without notice. All Floor plans, property lines, areas, and dimensions are approximate and for illustration purposes only. DHRP | DH Realty Partners, Inc. ©2019. A Texas Corporation.

SOUTHTOWN MULTI-FAMILY / MIXED-USE

1915 S Presa St | San Antonio, TX 78210

LOCATION INFORMATION

TRAFFIC COUNTS



Average Daily Traffic Volume
 ▲ Up to 6,000 vehicles per day
 ▲ 6,001 - 15,000
 ▲ 15,001 - 30,000
 ▲ 30,001 - 50,000
 ▲ 50,001 - 100,000
 ▲ More than 100,000 per day



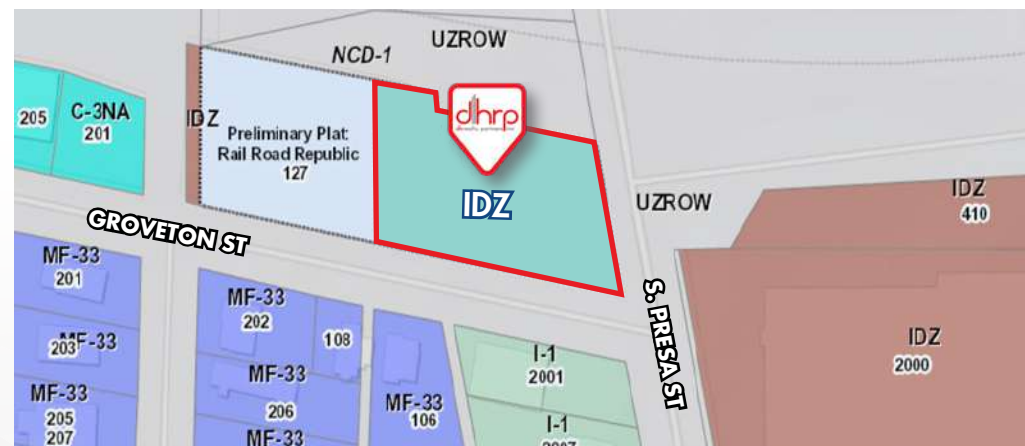
Sources: © 2019 Kalibrate Technologies (04 2018).

DEMOGRAPHICS

	1 Mile	3 Mile	5 Mile
Population	15,933	157,116	358,409
Median Age	36.9	34.4	34.0
Avg Household Size	2.6	2.8	2.8
Median Household Income	\$36,585	\$30,157	\$33,205

Source: ESRI, 2019

ZONING MAP



The information herein was obtained from sources deemed reliable; however, DH Realty Partners, Inc. makes no guarantees, warranties, or representations as to the completeness or accuracy thereof. The presentation of this property is submitted subject to errors, omissions, changes of price, prior to sale or lease, or withdrawal without notice. All Floor plans, property lines, areas, and dimensions are approximate and for illustration purposes only. DHRP | DH Realty Partners, Inc. ©2019. A Texas Corporation.



Michael D. Hoover, CSM
210.218.9095
hoover@dhrp.us

John Cannon, CCIM
210.386.6410
cannon@dhrp.us

Morgan Cannon Diaz
210.836.8990
morgan@dhrp.us

HAZARDOUS MATERIAL DISCLOSURE

Every purchaser, seller, landlord and/or tenant of any interest in real property ("Property") is notified that prior or current uses of the Property or adjacent properties may have resulted in hazardous or undesirable materials being located on the Property. These materials may not be visible or easily detected. Current or future laws may require removal or clean-up of areas containing these materials. In order to determine if hazardous or undesirable materials are present on the Property, expert inspections are necessary and removal or clean-up of these materials will require the services of experts. Real Estate Agents are not qualified experts.

If you are a seller or landlord, it is your responsibility to ensure that the transaction documents include disclosures and/or disclaimers that are appropriate for the transaction and the Property.

If you are a purchaser or tenant, it is your responsibility to ensure that the transaction documents include provisions to permit consultation with attorneys, environmental consultants and others to make prudent investigations, and further that such inspections are conducted.

ADA DISCLOSURE

In order to ensure that all business establishments are accessible to persons with a variety of disabilities, the Americans with Disabilities Act was enacted under federal law and there are also state and local laws that may require alterations to a Property in order to allow access. Texas has enacted the Architectural Barriers Removal Act to also accommodate persons with disabilities. Real Estate Agents are not qualified to advise you if the Property complies with these laws or what changes may be necessary. You should consult with attorneys, engineers and other experts to determine if the Property is in compliance with these laws.

FLOOD PLAIN INFORMATION DISCLOSURE

It is the sole responsibility of every purchaser, seller, landlord and/or tenant of any interest in Property to independently review the appropriate flood plain designation maps proposed and adopted by federal, state, and local resources including, but not limited to, the Federal Emergency Management Association ("FEMA") and the San Antonio River Authority ("SARA"), in order to determine the potential flood risk of their Property. Real Estate Agents are not qualified to assess and cannot warrant, guarantee, or make any representations about the flood risk of a particular piece of Property. All decisions made or actions taken or not taken by a purchaser, seller, landlord and/or tenant with respect to the flood risk of a particular piece of Property shall be the sole responsibility of such party.

The information herein was obtained from sources deemed reliable; however, DH Realty Partners, Inc. makes no guarantees, warranties, or representations as to the completeness of accuracy thereof. The presentation of this property is submitted subject to errors, omissions, changes of price, prior to sale or lease, or withdrawal without notice. All Floor plans, property lines, areas, and dimensions are approximate and for illustration purposes only. DHRP | DH Realty Partners, Inc. ©2019. A Texas Corporation.



Information About Brokerage Services

Texas law requires all real estate license holders to give the following information about brokerage service to prospective buyers, tenants, sellers and landlords.

TYPES OF REAL ESTATE LICENSE HOLDERS

- A BROKER is responsible for all brokerage activities, including acts performed by sales agents sponsored by the broker.
- A SALES AGENT must be sponsored by a broker and works with clients on behalf of the broker.

A BROKER'S MINIMUM DUTIES REQUIRED BY LAW (A client is the person or party that the broker represents):

- Put the interests of the client above all others, including the broker's own interests;
- Inform the client of any material information about the property or transaction received by the broker;
- Answer the client's questions and present any offer to or counter-offer from the client; and
- Treat all parties to a real estate transaction honestly and fairly.

A LICENSE HOLDER CAN REPRESENT A PARTY IN A REAL ESTATE TRANSACTION:

AS AGENT FOR OWNER (SELLER/LANDLORD): The broker becomes the property owner's agent through an agreement with the owner, usually in a written listing to sell or property management agreement. An owner's agent must perform the broker's minimum duties above and must inform the owner of any material information about the property or transaction known by the agent, including information disclosed to the agent or sub-agent by the buyer or buyer's agent.

AS AGENT FOR BUYER/TENANT: The broker becomes the buyer/tenant's agent by agreeing to represent the buyer, usually through a written representation agreement. A buyer's agent must perform the broker's minimum duties above and must inform the buyer of any material information about the property or transaction known by the agent, including information disclosed to the agent by the seller or seller's agent.

AS AGENT FOR BOTH - INTERMEDIARY: To act as an intermediary between the parties the broker must first obtain the written agreement of each party to the transaction. The written agreement must state who will pay the broker and, in conspicuous bold or underlined print, set forth the broker's obligations as an intermediary. A broker who acts as an intermediary:

- Must treat all parties to the transaction impartially and fairly;
- May, with the parties' written consent, appoint a different license holder associated with the broker to each party (owner and buyer) to communicate with, provide opinions and advice to, and carry out the instructions of each party to the transaction.
- Must not, unless specifically authorized in writing to do so by the party, disclose:
 - that the owner will accept a price less than the written asking price;
 - that the buyer/tenant will pay a price greater than the price submitted in a written offer and
 - any confidential information or any other information that a party specifically instructs the broker in writing, not to disclose, unless required to do so by law.

AS SUBAGENT: A license holder acts as a subagent when aiding a buyer in a transaction without an agreement to represent the buyer. A subagent can assist the buyer but does not represent the buyer and must place the interests of the owner first.

TO AVOID DISPUTES, ALL AGREEMENTS BETWEEN YOU AND A BROKER SHOULD BE IN WRITING AND CLEARLY ESTABLISH:

- The broker's duties and responsibilities to you, and your obligations under the representation agreement.
- Who will pay the broker for services provided to you, when payment will be made and how the payment will be calculated.

LICENSE HOLDER CONTACT INFORMATION: This notice is being provided for information purposes. It does not create an obligation for you to use the broker's services. Please acknowledge receipt of this notice below and retain a copy for your records.

<u>DH REALTY PARTNERS, INC</u> <small>LICENSED BROKER / BROKER FIRM NAME OR PRIMARY ASSUMED BUSINESS NAME</small>	<u>147342</u> <small>LICENSE #</small>	<u>www.dhrp.us</u> <small>E-MAIL</small>	<u>210.222.2424</u> <small>PHONE</small>
<u>Charles L. Jeffers</u> <small>DESIGNATED BROKER OF FIRM</small>	<u>162202</u> <small>LICENSE #</small>	<u>cjeffers@dhrp.us</u> <small>E-MAIL</small>	<u>210.222.2424</u> <small>PHONE</small>
<u>John Cannon, CCIM</u> <small>LICENSED SUPERVISOR OF SALES AGENT/ASSOCIATE</small>	<u>618616</u> <small>LICENSE #</small>	<u>cannon@dhrp.us</u> <small>E-MAIL</small>	<u>210.222.2424</u> <small>PHONE</small>
<u>Michael D. Hoover, CSM</u> <small>SALES AGENT/ASSOCIATE'S NAME</small>	<u>391636</u> <small>LICENSE #</small>	<u>hoover@dhrp.us</u> <small>E-MAIL</small>	<u>210.222.2424</u> <small>PHONE</small>
<u>John Cannon, CCIM</u> <small>SALES AGENT/ASSOCIATE'S NAME</small>	<u>618616</u> <small>LICENSE #</small>	<u>cannon@dhrp.us</u> <small>E-MAIL</small>	<u>210.386.6410</u> <small>PHONE</small>
<u>Morgan Cannon Diaz</u> <small>SALES AGENT/ASSOCIATE'S NAME</small>	<u>669476</u> <small>LICENSE #</small>	<u>morgan@dhrp.us</u> <small>E-MAIL</small>	<u>210.836.8990</u> <small>PHONE</small>

BUYER / TENANT / SELLER / LANDLORD
INITIALS

DATE