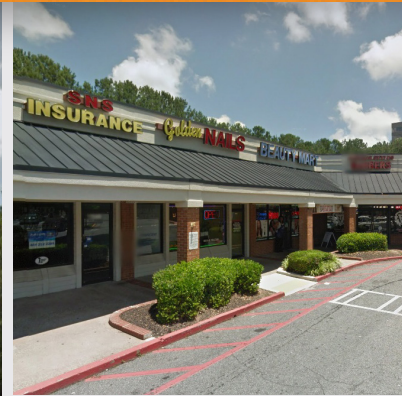


NORTHBRIDGE SHOPPING CENTER

8371 Roswell Road, Atlanta, GA 30350

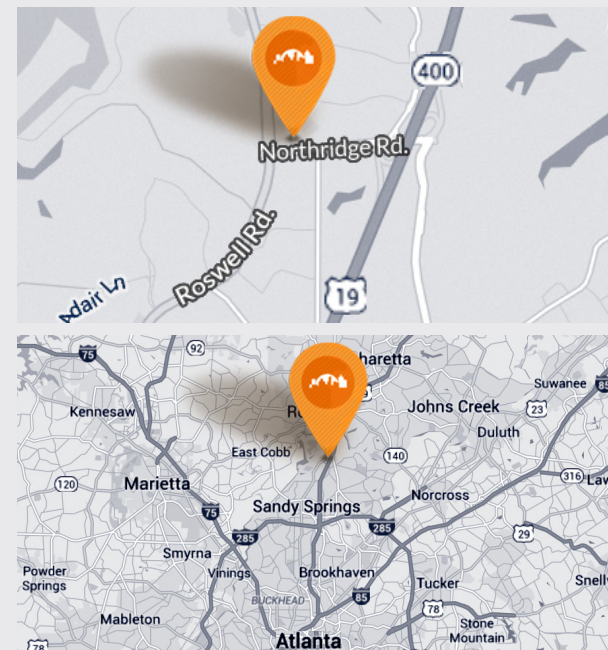
41,584SF AVAILABLE FOR LEASE



PROPERTY HIGHLIGHTS

- Strong performing Kroger-anchored shopping center.
- Great access with limited competition in area.
- Located at signalized intersection of Roswell Rd and Northridge Rd.
- Growing population with strong demographics.
- Convenient access to GA-400
- Second Generation Restaurant Space Available

Demographics	1 Miles	3 Miles	5 Miles
Population	12,333	78,739	209,838
Households	6,026	34,377	89,178
Average HH Income	\$62,736	\$99,731	\$110,335



For leasing information, please contact:

- | | |
|---|---|
| • Ryan Holzer
404.812.8914
rholzer@skylineseven.com | • Brooke Mullman
404.977.5880
bmullman@skylineseven.com |
|---|---|

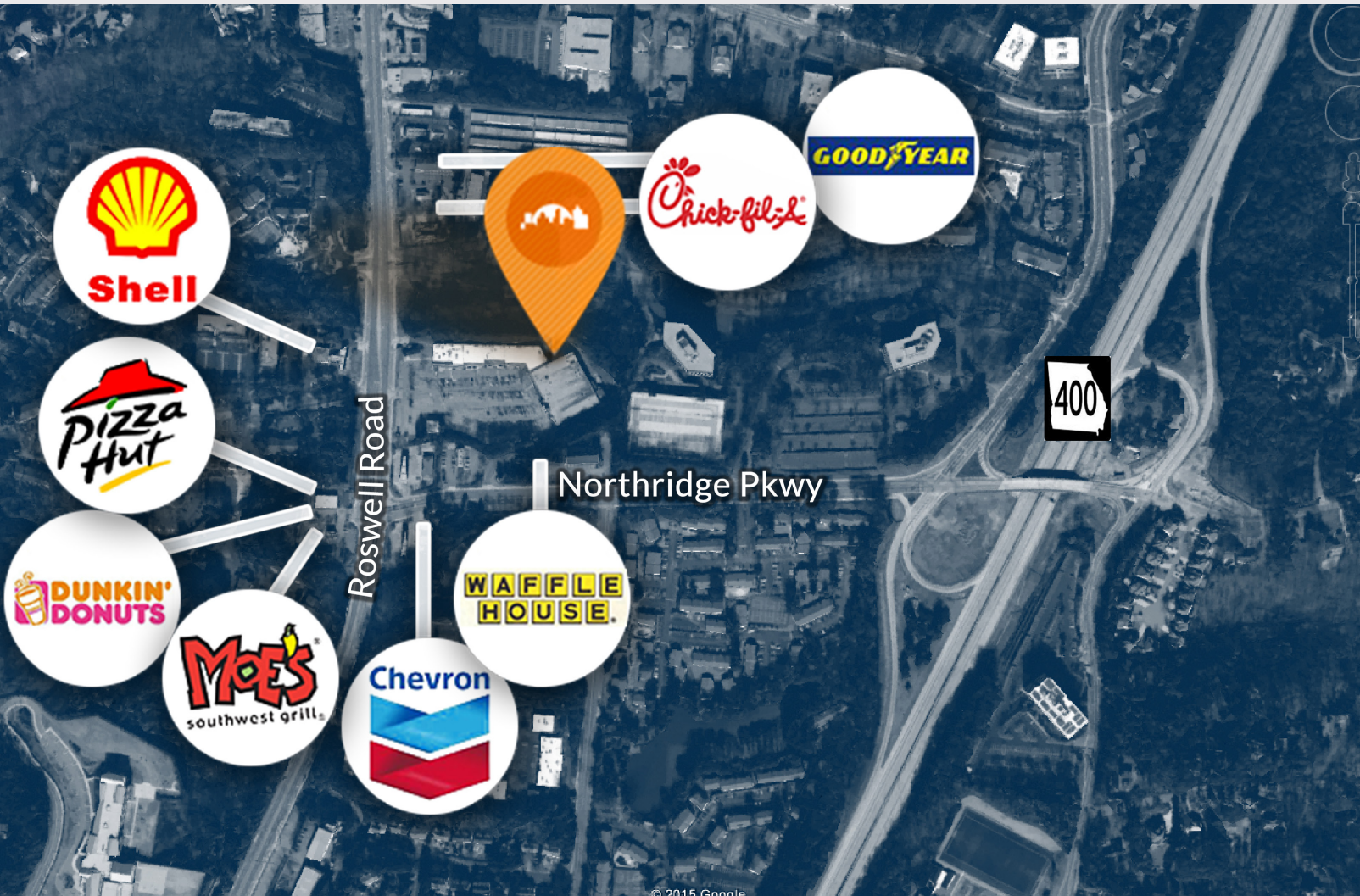
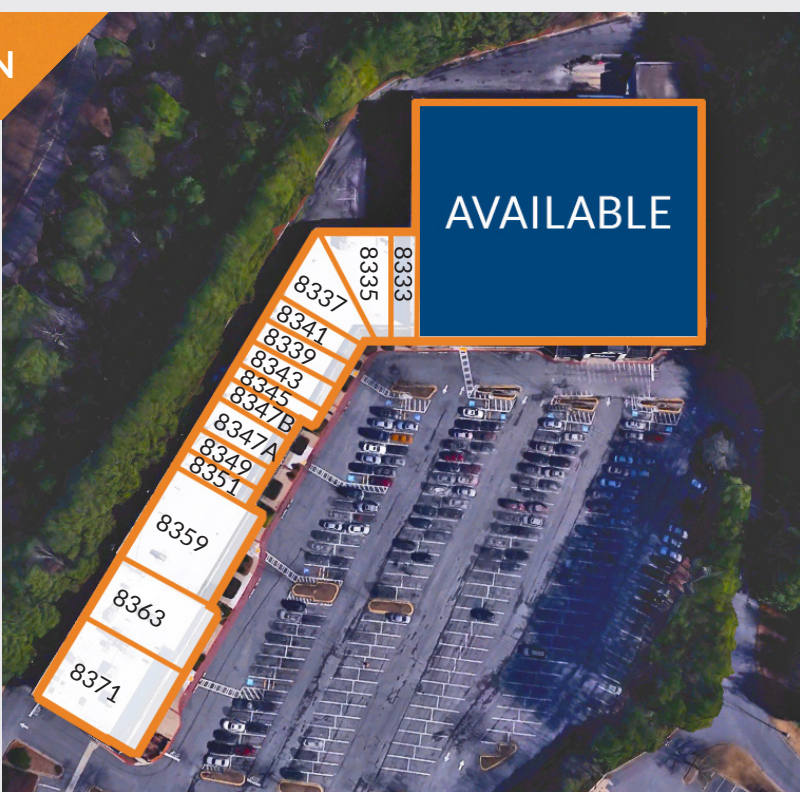
SKYLINE SEVEN REAL ESTATE

5825 Glenridge Drive
Building 1, Suite 206
Atlanta, GA 30328
www.skylineseven.com

Main: 404.812.8910
Fax: 678.916.4149
info@skylineseven.com

NORTHRIDGE SHOPPING CENTER // SITE PLAN

STE	TENANT	SF
8371	Barnacle's	7,059
8363	Shami Kitchen	3,150
8359	Dollar Tree	5,550
8351	Little Caesar's	1,207
8349	Fire City	900
8347A	Metro PCS	1,020
8347B	Hair Salon	780
8345	Anta Hair Braiding	1,000
8343	The UPS Store	1,950
8339	Wings To-Go	1,050
8341	Golden Nails	1,050
8337	It's Amazing Beauty Supply	4,637
8335	Furious Styles	1,600
8333	Northridge Bottle	1,607
8331	AVAILABLE	41,584



© Copyright 2014 Skyline Seven Real Estate. All rights reserved.

SKYLINE SEVEN REAL ESTATE

5825 Glenridge Drive
Building 1, Suite 206
Atlanta, GA 30328
www.skylineseven.com

Main: 404.812.8910
Fax: 678.916.4149
info@skylineseven.com