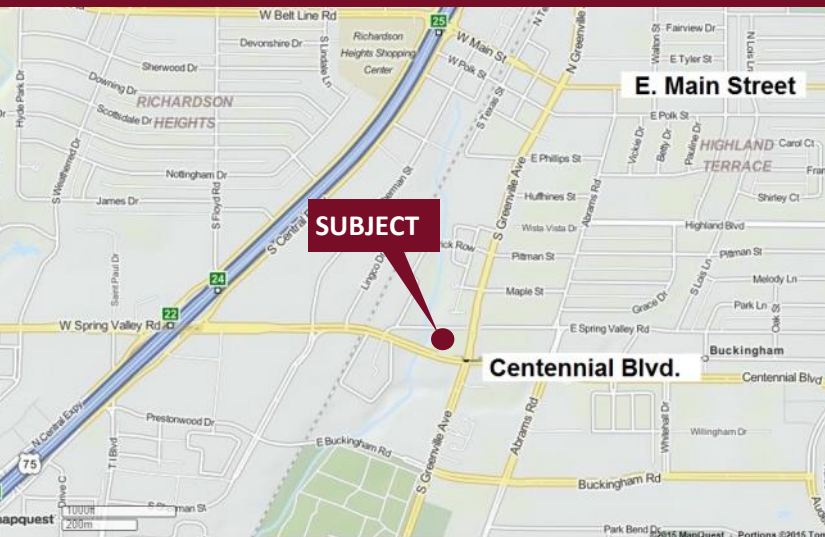


Centennial Green - 850 S. Greenville Avenue

Richardson, Texas 75081

www.momentumreal.com



Available for Lease

±16,466 SF OFFICE/BUSINESS CENTER

Building Features:

- Highly Visible and Well Traveled
- 100% AC
- Current Tenants consist of a Bakery, Hair Salon, Chiropractor, and Acupuncture
- Brick Construction
- 83 Concrete Parking Spaces
-

For more information or to schedule a tour, please contact:

Daniel Greenberg

Vice President

972.707.9155 Direct

214.536.2735 Cell

dgreenberg@momentumreal.com

Jessica Reinhardt

Vice President - Leasing

972.707.9156 Direct

972.891.5236 Cell

jreinhardt@momentumreal.com



16610 Dallas Parkway, Suite 2300

Dallas, Texas 75248

Office 972.707.9150

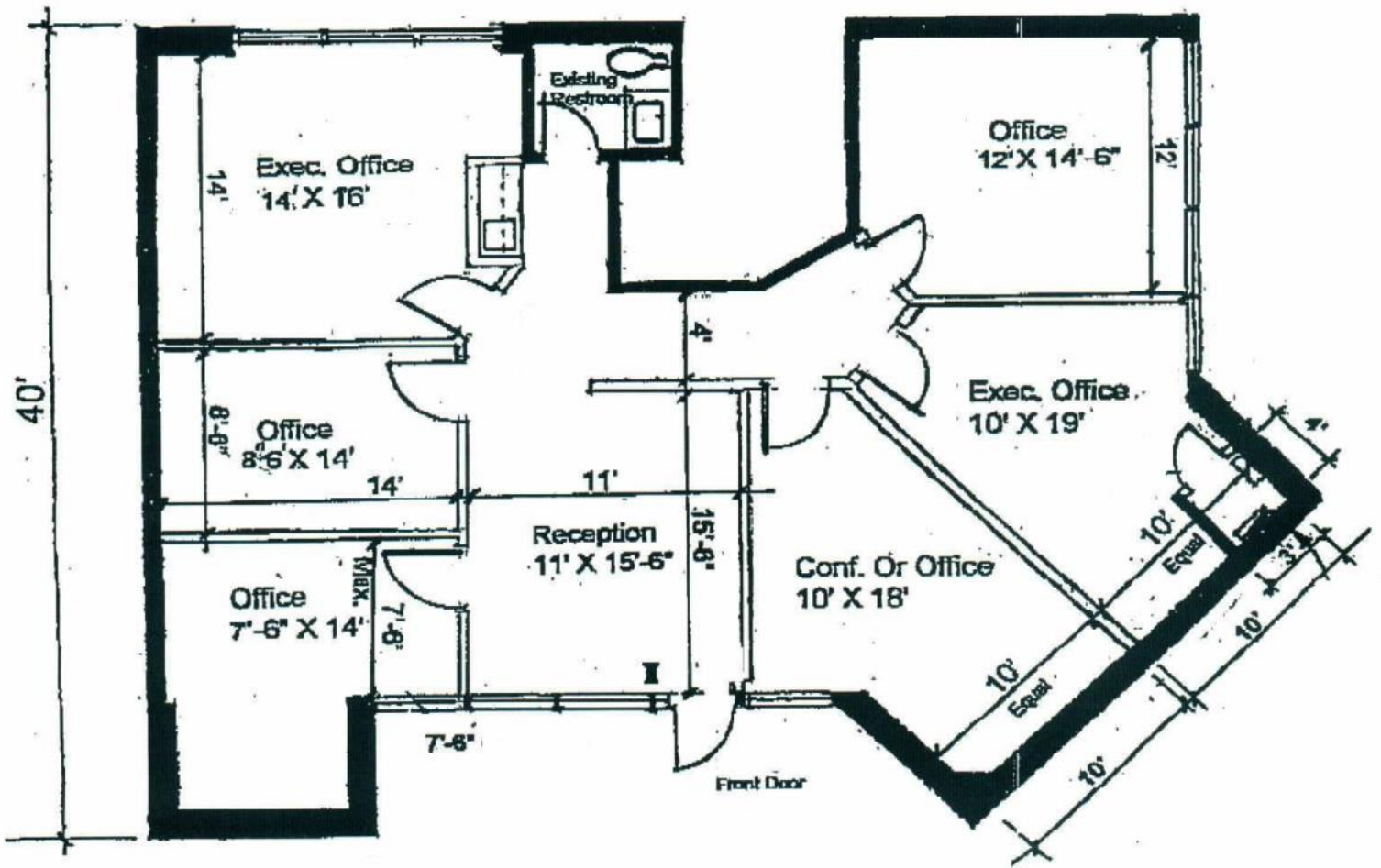
leasing@momentumreal.com

Centennial Green - 850 S. Greenville Avenue

Richardson, Texas 75081

SUITE 116 - 1,524 S.F.

Floor Plan



16610 Dallas Parkway, Suite 2300

Dallas, Texas 75248

Office 972.707.9150

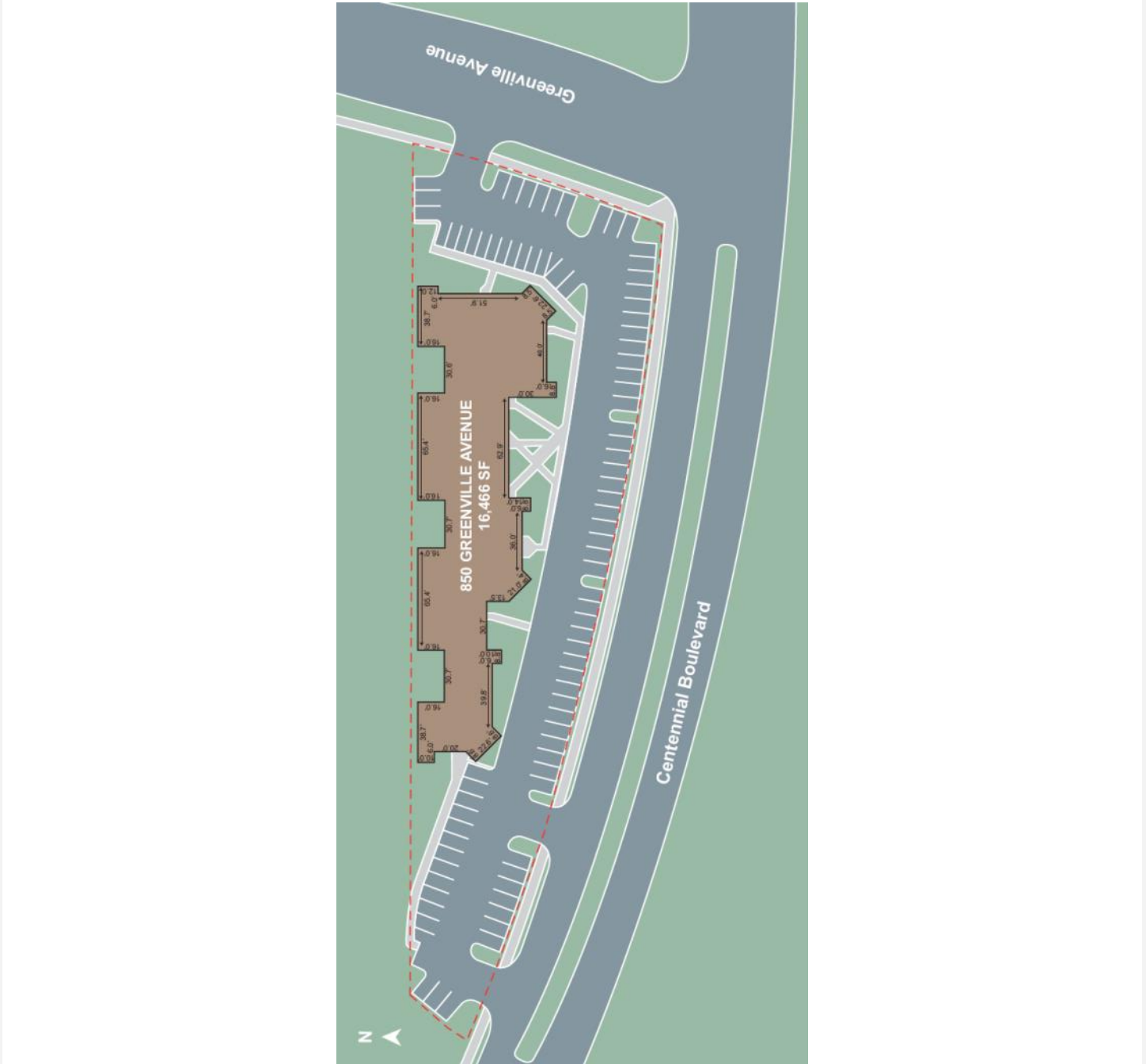
leasing@momentumreal.com

Centennial Green - 850 S. Greenville Avenue

Richardson, Texas 75081

www.momentumreal.com

Site Map



16610 Dallas Parkway, Suite 2300

Dallas, Texas 75248

Office 972.707.9150

leasing@momentumreal.com