



FOUNDRY  
COMMERCIAL

JACKSONVILLE, FL

**8750 PERIMETER PARK BLVD**

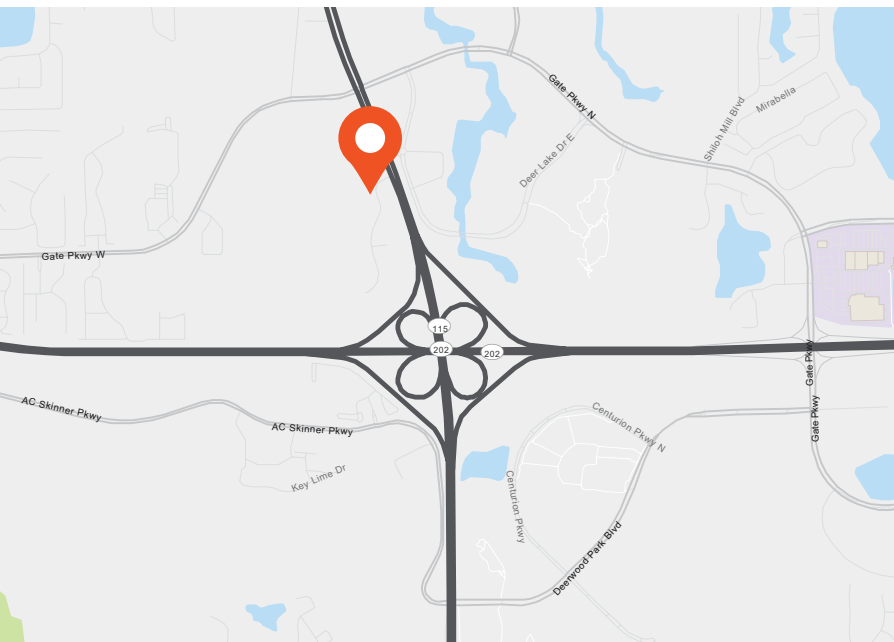
8750 PERIMETER PARK BLVD, JACKSONVILLE, FL 32216

2,500 RSF AVAILABLE FOR LEASE



JACKSONVILLE, FLORIDA

## 8750 PERIMETER PARK FOR LEASE



### PROPERTY FEATURES

- Lake front setting
- Building & monument signage
- Located in Jacksonville's Southside Tinseltown submarket, 1 mile north of JTB and Southside Blvd
- Area is strongest office market in Jacksonville
- Subject property is just minutes from the booming St. Johns Town Center

### BUILDING SPECIFICATIONS

BUILDING SIZE	10,328 SF
AVAILABLE	2,500 SF
LEASE RATE	\$18.00
PARKING	4.5/1,000

#### FOR MORE INFORMATION, PLEASE CONTACT:

**BRAD CHRISCHILLES | 904.345.2020**  
Principal  
Brad.Chrischilles@foundrycommercial.com  
Licensed Real Estate Broker

**ANDREW HAWKINS | 904.345.2022**  
Senior Vice President  
Andrew.Hawkins@foundrycommercial.com  
Licensed Real Estate Broker

Although the information contained herein was provided by sources believed to be reliable, Foundry Commercial makes no representation, expressed or implied, as to its accuracy and said information is subject to errors, omissions or changes.

**FOUNDRY**  
COMMERCIAL

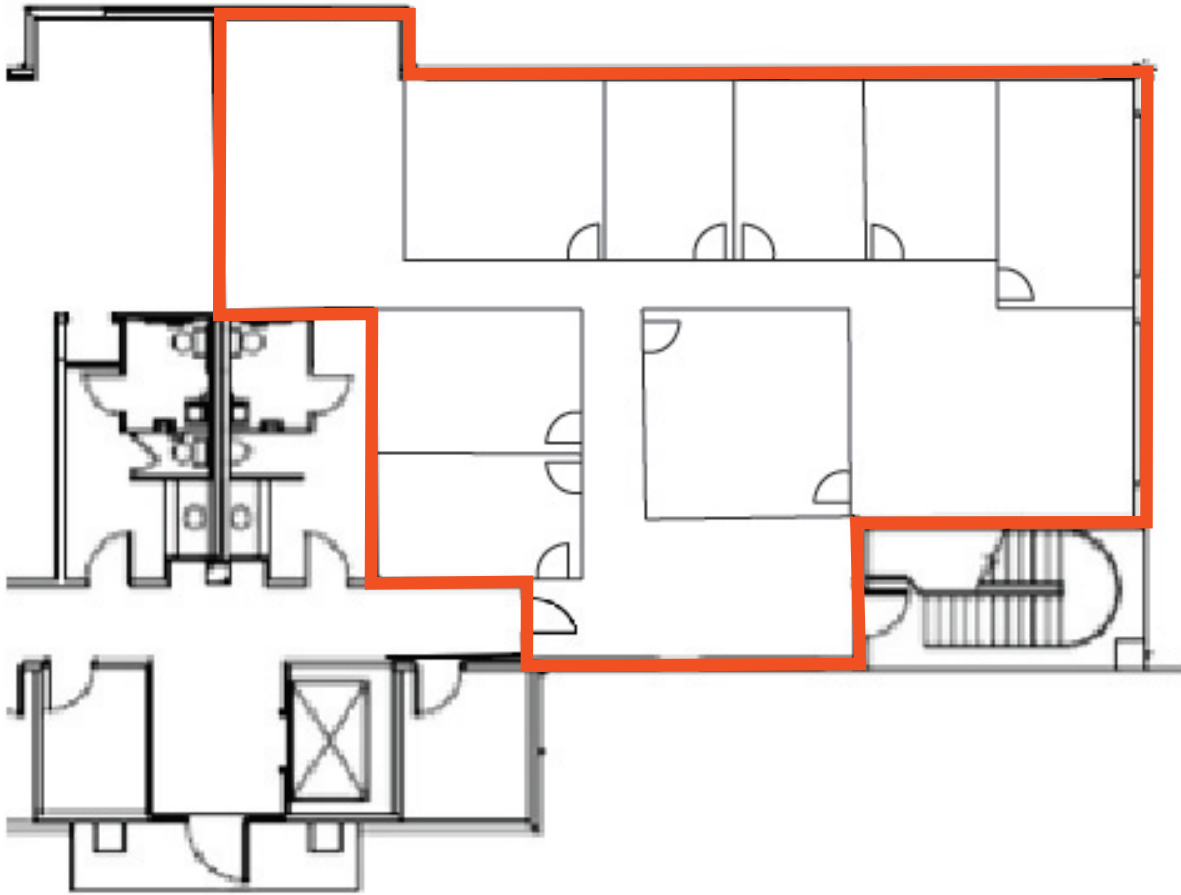
[foundrycommercial.com](https://foundrycommercial.com)

JACKSONVILLE, FLORIDA

8750 PERIMETER PARK BLVD, JACKSONVILLE, FL 32216

## FOR LEASE

### FLOOR PLAN



#### FOR MORE INFORMATION, PLEASE CONTACT:

BRAD CHRISCHILLES | 904.345.2020

Principal

[Brad.Chrischilles@foundrycommercial.com](mailto:Brad.Chrischilles@foundrycommercial.com)

Licensed Real Estate Broker

ANDREW HAWKINS | 904.345.2022

Senior Vice President

[Andrew.Hawkins@foundrycommercial.com](mailto:Andrew.Hawkins@foundrycommercial.com)

Licensed Real Estate Broker

Although the information contained herein was provided by sources believed to be reliable, Foundry Commercial makes no representation, expressed or implied, as to its accuracy and said information is subject to errors, omissions or changes.

**FOUNDry**  
COMMERCIAL

[foundrycommercial.com](http://foundrycommercial.com)