

AVAILABLE FOR SUBLEASE
112,000 SQUARE FEET



2680-2690 S. PELLISSIER PLACE, CITY OF INDUSTRY, CA

BUILDING FEATURES

Sublease Term: Through March 14, 2022

Office Space: 6,523 Square Feet + 1,523 Square Feet

Clearance: 24' minimum

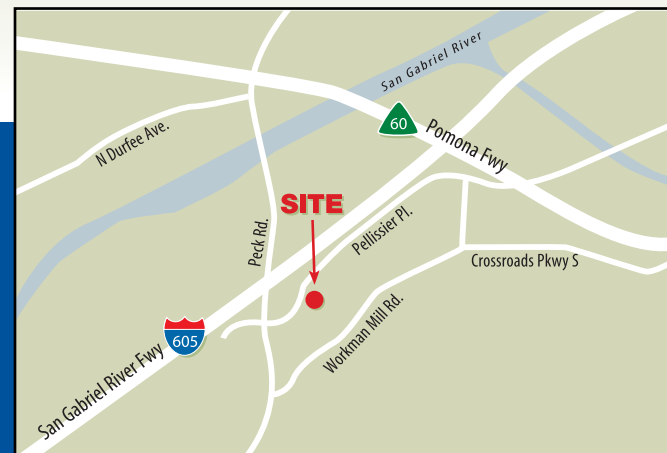
Fire Sprinklers: .38 GPM/3,000 S.F.

Power: 800 amps, 277/480 volts, 3 phase

Lighting: 400w pulse start, ceramic lense, metal halide

Loading: 23 dock high
2 ground level

Parking Spaces: 130 automobiles, extra parking available



FOR ADDITIONAL INFORMATION:

David Bui
(562) 948-4388
R.E. License #00873780 (CA)
dbui@majesticrealty.com

Louis Goldstein
(562) 576-1611
R.E. License #01929146 (CA)
lgoldstein@majesticrealty.com

Terry Baker
(562) 948-4341
R.E. License #00711593 (CA)
tbaker@majesticrealty.com

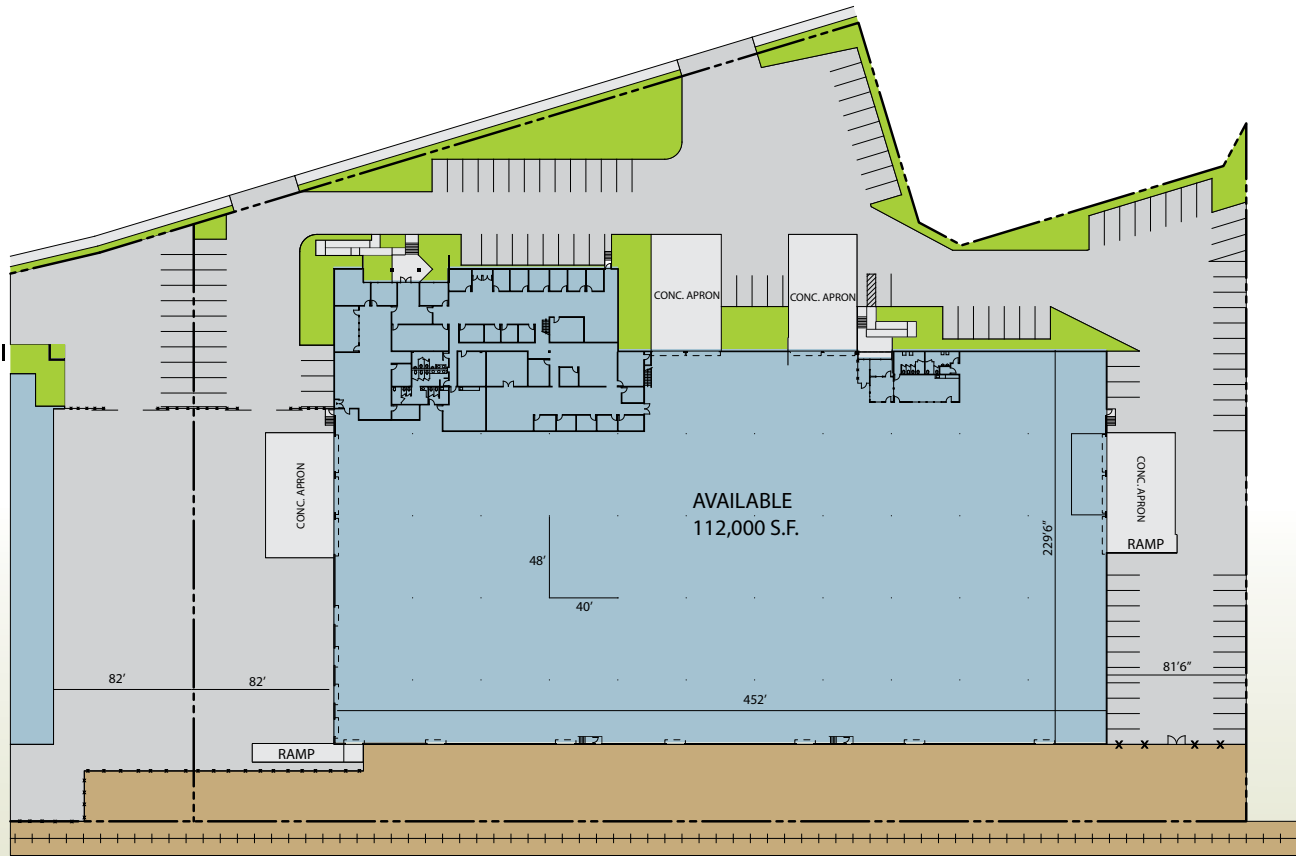
AVAILABLE FOR LEASE SUBLEASE

112,000 SQUARE FEET

2680-2690 S. PELLISSIER PLACE, CITY OF INDUSTRY, CA



SITE PLAN



FOR ADDITIONAL INFORMATION:

David Bui (562) 948-4388

R.E. License #00873780 (CA)
dbui@majesticrealty.com

Louis Goldstein (562) 576-1611

R.E. License #01929146 (CA)
lgoldstein@majesticrealty.com

Terry Baker (562) 948-4341

R.E. License #00711593 (CA)
tbaker@majesticrealty.com

13191 Crossroads Parkway North, Sixth Floor | City of Industry, CA 91746-3497 | www.majesticrealty.com | R.E. License #00255328 (CA)

This statement is based upon information which we believe to be correct and is obtained from sources we regard as reliable but we assume no liability for errors or omissions therein.