



DARWIN
R E A L T Y



BUILDING AVAILABLE FOR SALE

320 MEYER ROAD, BENSENVILLE, IL

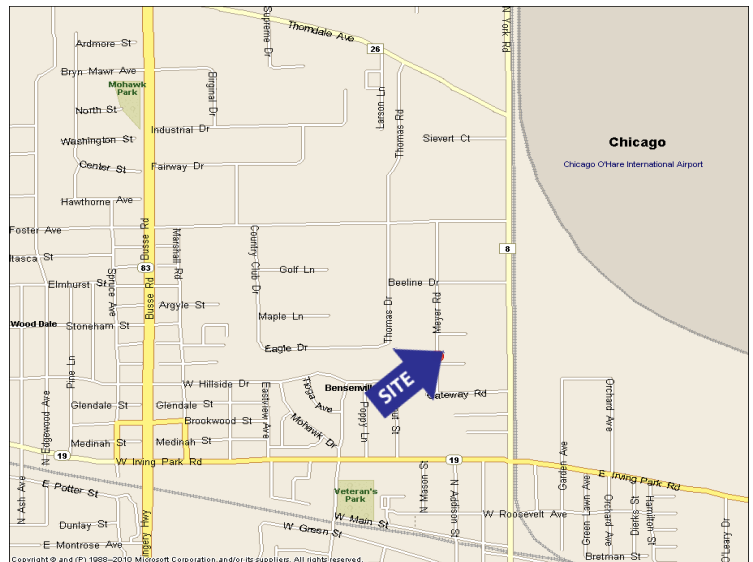


BUILDING SPECIFICATIONS

BUILDING SIZE:	9,349 SF
OFFICE:	2,887 SF
CEILING:	14' clear
LOADING:	1 exterior dock, 1 drive-in door
POWER:	200 amps
PARKING:	10 cars

REAL ESTATE TAXES: \$1.26 psf (2014 paid 2015)

SALE PRICE: \$695,000.00



FEATURES

- Rare smaller free-standing building
- DuPage County taxes
- Close proximity to O'Hare Airport
- Newly updated offices, kitchen area and bathrooms.

**FOR ADDITIONAL
INFORMATION,
PLEASE CONTACT:**

JEFFREY J. PROVENZA

Vice President

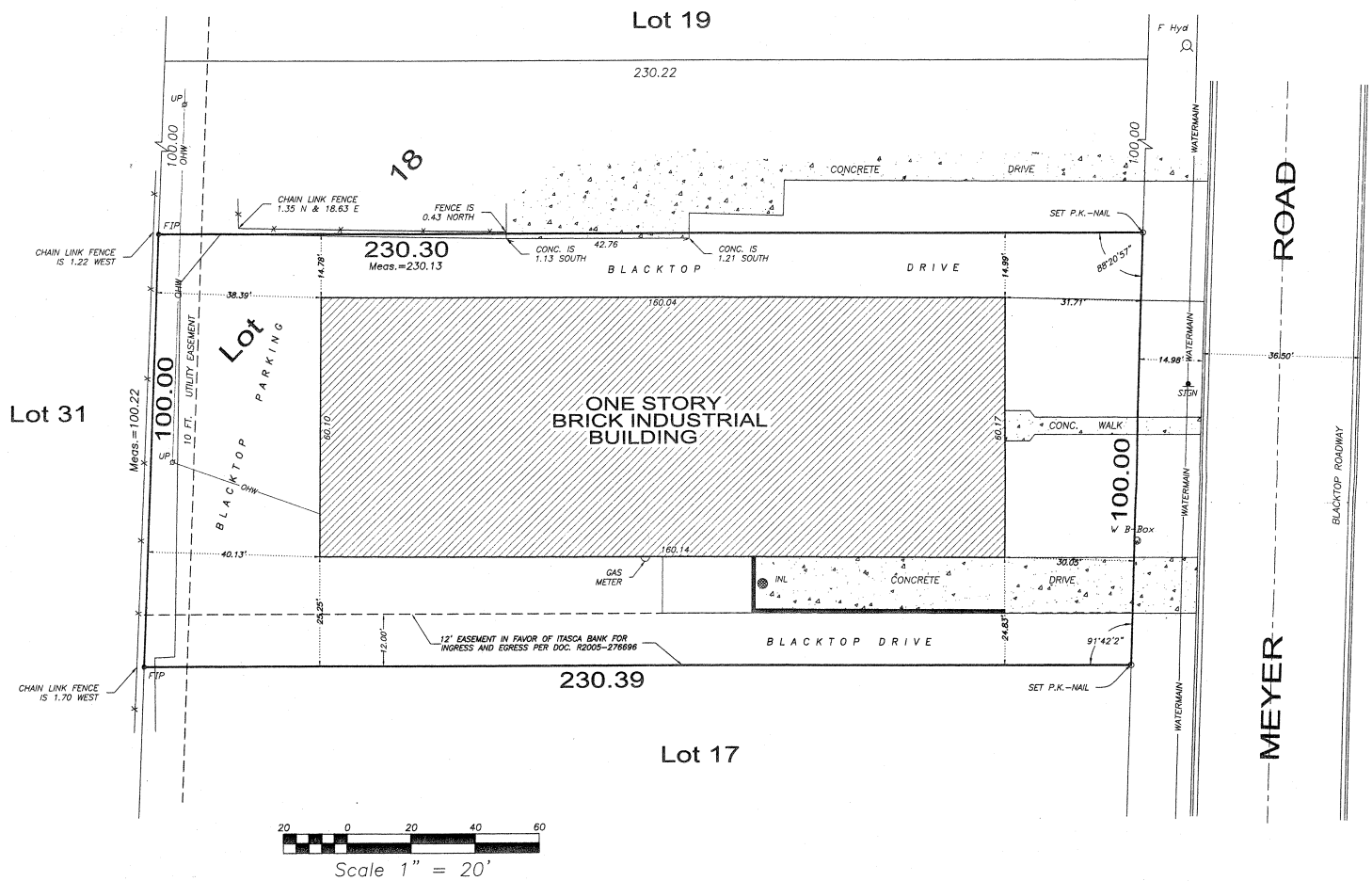
rdaly@darwinrealty.com

970 N. Oaklawn Avenue, Suite 100 | Elmhurst, IL 60126 | Tel: 630-782-9520 | Fax: 630-782-9531 | www.darwinrealty.com

Submitted subject to error, change in status, or withdrawal without notice.



320 MEYER ROAD, BENSENVILLE, IL



**FOR ADDITIONAL
INFORMATION,
PLEASE CONTACT:**

JEFFREY J. PROVENZA

Vice President

rdaly@darwinrealty.com

970 N. Oaklawn Avenue, Suite 100 | Elmhurst, IL 60126 | Tel: 630-782-9520 | Fax: 630-782-9531 | www.darwinrealty.com

Submitted subject to error, change in status, or withdrawal without notice.