

76 KENT STREET

GREENPOINT, BROOKLYN



**RETAIL SPACE
FOR LEASE**

SPACE HIGHLIGHTS

LOCATION

Between Franklin St
& West St

SPACE

Ground Floor 2,400 SF
Lower Level 2,400 SF

CEILING HEIGHT

Ground Floor 14 FT
Lower Level 12 FT

FRONTAGE

25 FT

DIMENSIONS

25 FT x 100 FT

ZONING

M1-2/R6B

OCCUPANCY

Immediate

ASKING RENT

Upon Request

HIGHLIGHTS

- Newly renovated open retail space total of 4800 SF with high ceilings split between two floors.
 - Located in heart of Greenpoint with easy access to trendy shops in Williamsburg.
 - Located 5 minutes from the Greenpoint Ave G train.
 - Many neighboring tech companies and incoming major new developments.
-

FLOORPLANS & DETAILS

GROUND FLOOR



LOWER LEVEL



KENT STREET

GROUND FLOOR

Space	2,400 SF
CH	14 FT
Frontage	25 FT
Dimensions	25 FT x 100 FT

LOWER LEVEL

Space	2,400 SF
CH	12 FT
Frontage	N/A
Dimensions	25 FT x 100 FT

GREENPOINT BROOKLYN

SPACE DEVELOPMENT

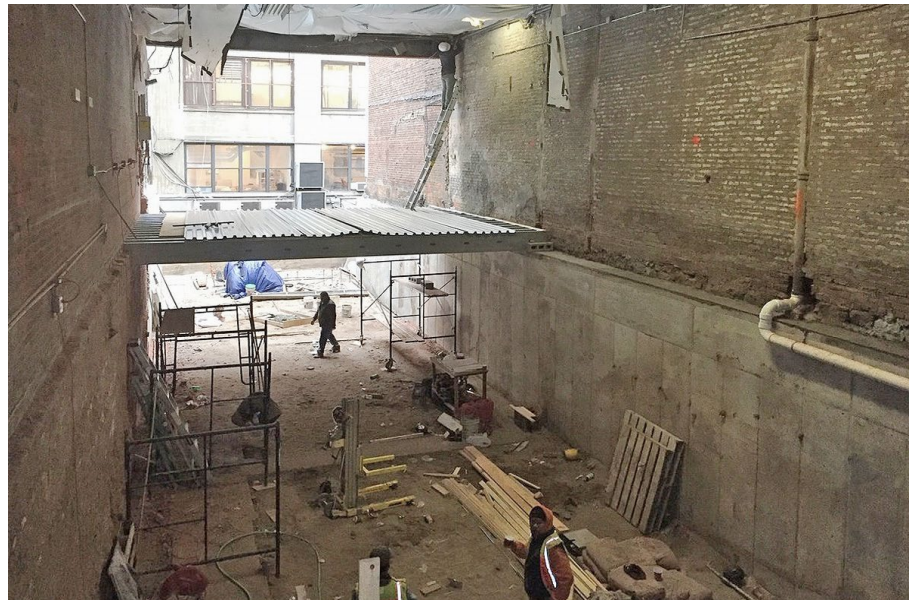
76 KENT STREET



GREENPOINT BROOKLYN

76 KENT STREET

SPACE DEVELOPMENT



GREENPOINT BROOKLYN

76 KENT STREET

NEIGHBORHOOD DEMOGRAPHICS



1,343,187

POPULATION
WITHIN 3-MILE
RADIUS



38 Years

AVERAGE
POPULATION
AGE



12.54%

POPULATION
GROWTH
SINCE 2010



\$117,755

AVERAGE HHI
WITHIN 3-MILE
RADIUS



138,208

TOTAL BUSINESSES
WITHIN 3-MILE
RADIUS



16.2 bn

TOTAL EXPENDITURE
WITHIN 3-MILE
RADIUS

GREENPOINT BROOKLYN

76 KENT STREET

NEIGHBORHOOD & TRANSPORTATION

NEIGHBORHOOD TENANTS

- Ramona
- Ovenly
- Home of the Brave
- Vamos Al Tequila
- New York Sports Clubs
- Greenpoint Waterfront
- Jungle Cafe
- Paulie Gee's
- Massage Greenpoint
- WORD
- goodyoga Greenpoint
- Black Rabbit
- Broken Land
- The Brooklyn Barge
- Maman
- Kennaland
- Karczma
- Naked Dog
- CVS Pharmacy
- Fornino
- City Bank
- Starbucks
- Sakura 6
- Elder Greene
- Regalis Food

TRANSPORTATION

- 5 Min Walk at Greenpoint Ave
- 20 Min Walk at Bedford Ave
- 5 Min Walk at Greenpoint Terminal, East River Ferry



GREENPOINT BROOKLYN

76 KENT STREET

CONTACT



DAVID DUBINSKY
718.308.7111
david.d@exrny.com

MAC POSNER
516.313.9008
mac@exrny.com

