

OFFICE BUILDING FOR SALE AND/OR LEASE

5620 BIRDCAGE STREET

CITRUS HEIGHTS, 95610



OWNER/USER OPPORTUNITY

This two-story building of wood and glass offers tile entry ways, an open lobby and immediate access to nearby restaurants and shopping.

CHAD COOK, SIOR, CCIM

Senior Director
+1.916.329.1562
chad.cook@cushwake.com
CA LIC #01711687

CHRIS SCHWARZE

Executive Director
+1.916.288.4803
chris.schwarze@cushwake.com
CA LIC #01291261



FLOOR PLAN

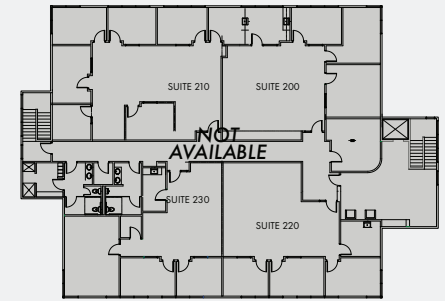
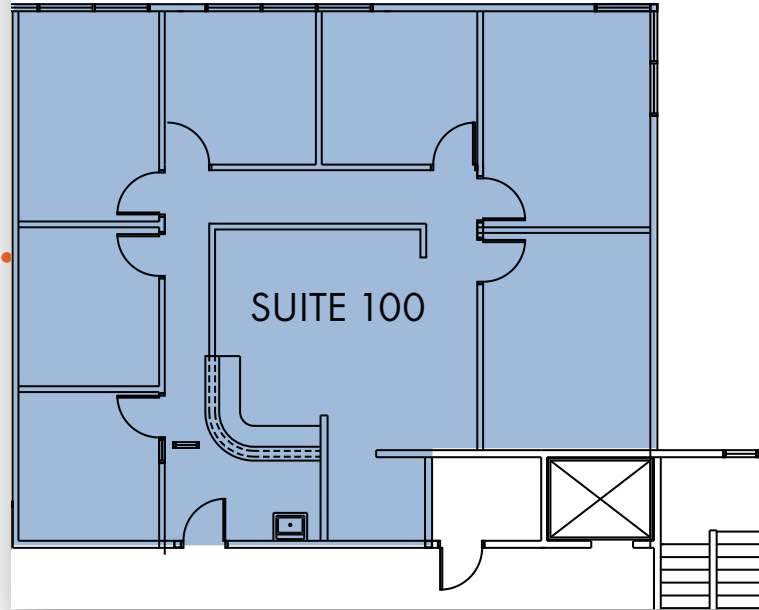
AVAILABLE
FOR LEASE

\$1.25/SF, FSG

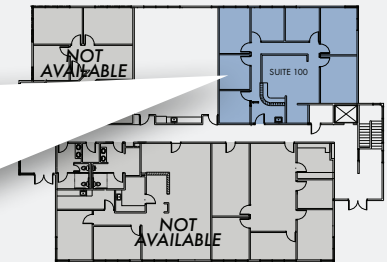
AVAILABLE FOR
PURCHASE

YEAR BUILT 1980

SUITE 100 | ±1803 SF

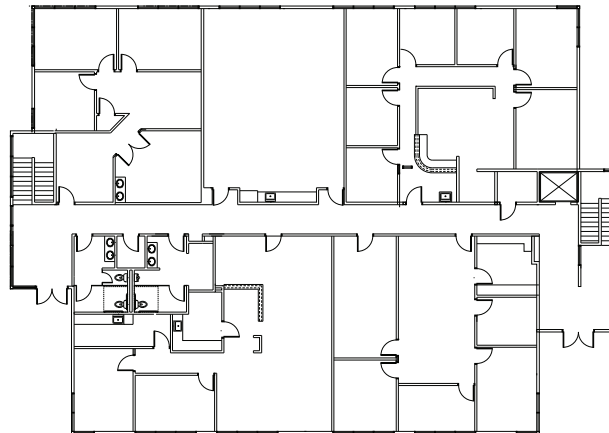


FLOOR 2

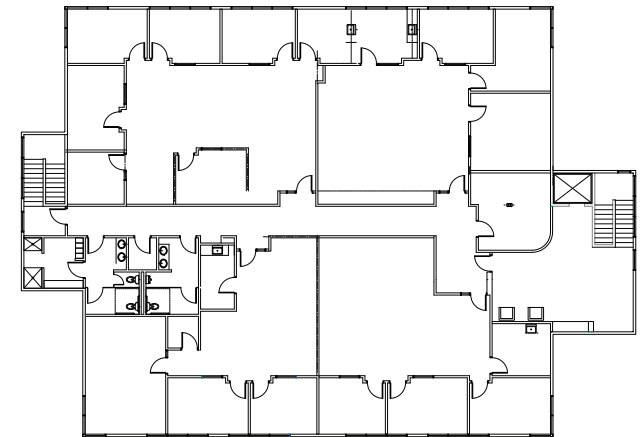


FLOOR 1

TWO-STORY BUILDING | ±15,753 SF



FLOOR 1



FLOOR 2

PROPERTY FEATURES



TWO STORY MULTI-TENANT OFFICE



HIGHWAY I-80 (5 MI)



SACRAMENTO INTERNATIONAL AIRPORT (24 MI)



PARKING RATIO OF 4 PER 1,000 SF



WALKING DISTANCE TO SHOPPING CENTERS



RESTAURANTS



BARs



BANKS



PARKS



MEDICAL CENTERS

MARKETPLACE AT BIRDCAGE



5620 BIRDCAGE ST., CITRUS HEIGHTS, CA

QUAIL POINTE SHOPPING CENTER



SUNRISE MALL





PROPERTY PHOTOS





5620 BIRDCAGE STREET

CITRUS HEIGHTS

CONTACT US

CHRIS SCHWARZE

Executive Director
+1.916.288.4803
chris.schwarze@cushwake.com
CA LIC #01291261

CHAD COOK, SIOR, CCIM

Senior Director
+1.916.329.1562
chad.cook@cushwake.com
CA LIC #01711687

400 Capitol Mall, Suite 1800
Sacramento, CA 95814
+1 916 288 4800
cushmanwakefield.com



OFFICE BUILDING FOR SALE AND/OR LEASE