

FOR LEASE

INDUSTRIAL YARD

7418

150TH ST SW

Lakewood, WA 98439



PROPERTY INFORMATION

- + Size: \pm 4.28 acres
- + Rate: \$0.13 per SF, NNN
- + Zoning: Industrial, City of Lakewood
- + Site has completed and approved engineering plans for storm water and paving



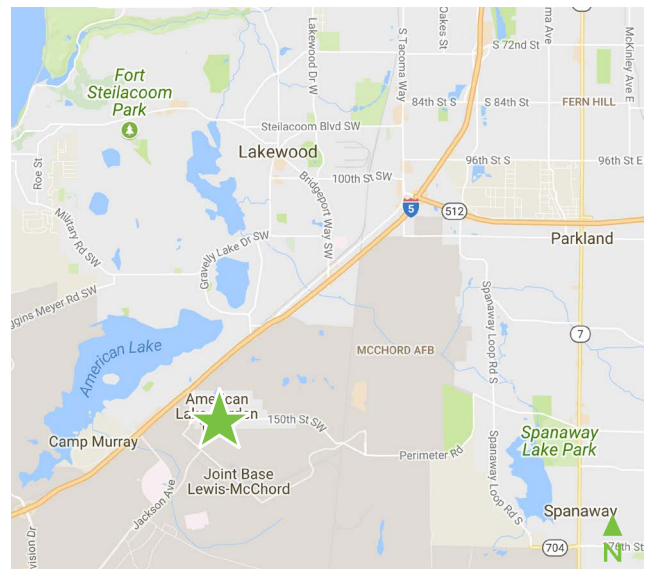
CONTACT US

KETNER SHEEAN

Senior Associate
+1 253 596 0028
ketner.sheean@cbre.com

CBRE, INC.

1201 Pacific Avenue
Suite 1502
Tacoma, WA 98402



www.cbre.us/tacoma

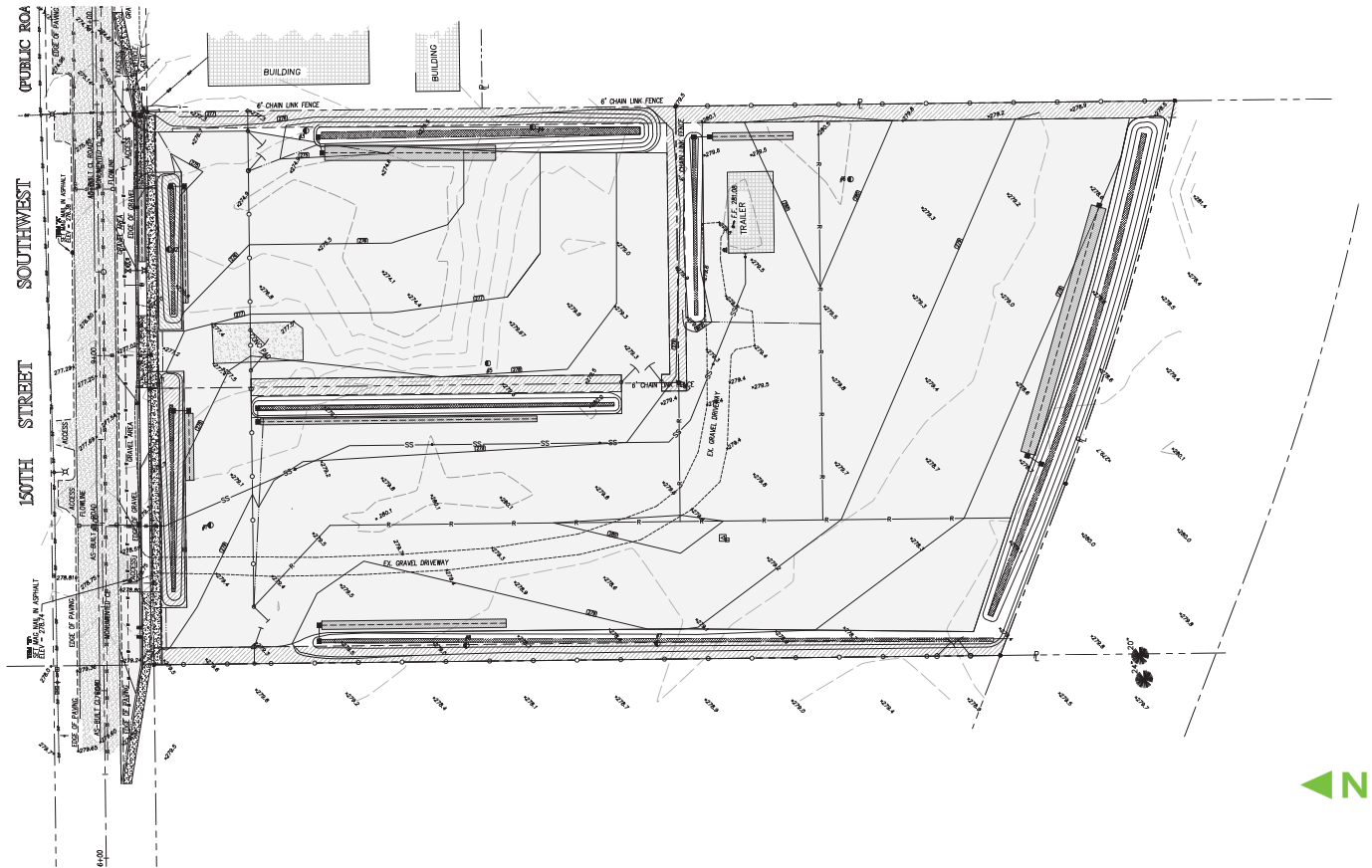
CBRE

FOR LEASE INDUSTRIAL YARD

7418
150TH STREET SW
Lakewood, WA 98439



SITE PLAN



CONTACT US

KETNER SHEEAN

Senior Associate
+1 253 596 0028
ketner.sheean@cbre.com

CBRE, INC.

1201 Pacific Avenue
Suite 1502
Tacoma, WA 98402

www.cbre.us/tacoma

CBRE

FOR LEASE
INDUSTRIAL YARD

7418
150TH STREET SW
Lakewood, WA 98439



AERIAL PHOTOS



FOR LEASE INDUSTRIAL YARD

7418
150TH STREET SW
Lakewood, WA 98439



LOCATION MAP

- + New I-5 Interchange under construction: <http://www.wsdot.wa.gov/Projects/I5/MountsRdThorneLn/>
- + Proximity to:
 - Port of Tacoma: 12 miles
 - Interstate 5: 0.25 miles



© 2018 CBRE, Inc. All rights reserved. This information has been obtained from sources believed reliable, but has not been verified for accuracy or completeness. You should conduct a careful, independent investigation of the property and verify all information. Any reliance on this information is solely at your own risk. CBRE and the CBRE logo are service marks of CBRE, Inc. All other marks displayed on this document are the property of their respective owners. Photos herein are the property of their respective owners. Use of these images without the express written consent of the owner is prohibited. RB 04.24.18