

# RIVERDALE BROOKHAVEN I

4905 & 4933 South 1500 West, Riverdale, Utah 84405



## FOR LEASE

\$20.25/SF FULL SERVICE

### PROPERTY FEATURES

- 4,126 RSF Available on the Second Floor
- 1,807 RSF Available on the First Floor
- 5,354 RSF Available on the First Floor
- Full First Floor Available: 7,161 RSF
- 135 Parking Stalls
- Rare Freeway Visibility
- Plug and Play Suite
- Excellent Access to I-15 & I-84

FOR MORE  
INFORMATION  
CONTACT

**CHRIS FALK, CCIM, SIOR**  
801.416.1024  
chris.falk@ngkf.com

**BRAXTON WILLIE, CCIM**  
801.416.1050  
braxton.willie@ngkf.com



1755 East 1450 South, Suite 100 | Clearfield, Utah 84015 | 801.927.2000 | [www.ngacres.com](http://www.ngacres.com)

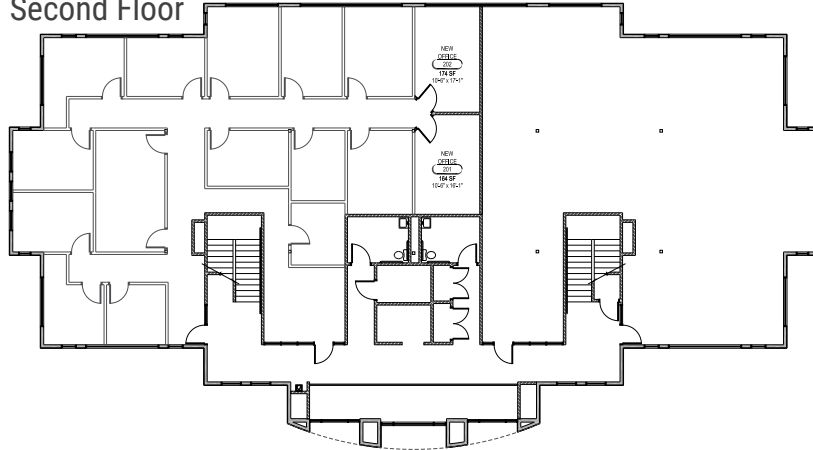
This document has been prepared by Newmark Knight Frank for advertising and general information purposes only. While the information contained herein has been obtained from what are believed to be reliable sources, the same has not been verified for accuracy or completeness. Newmark Knight Frank accepts no responsibility or liability for the information contained in this document. Any interested party should conduct an independent investigation to verify the information contained herein.

# RIVERDALE BROOKHAVEN I

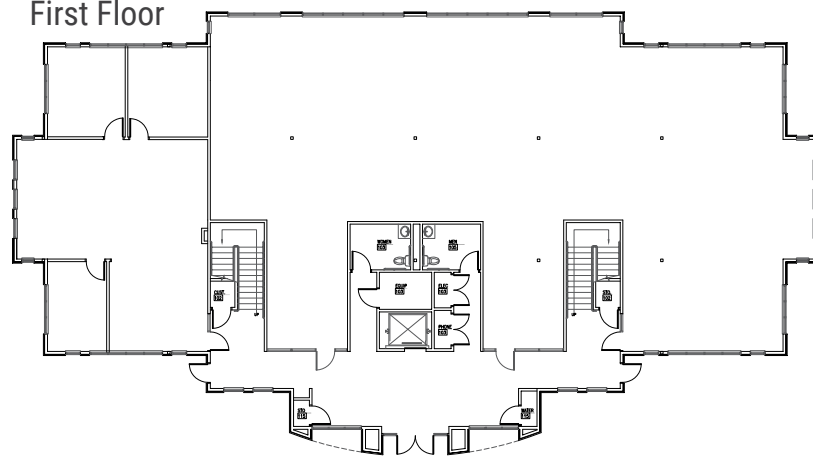
4905 & 4933 South 1500 West, Riverdale, Utah 84405

## SOUTH BUILDING

Second Floor



First Floor

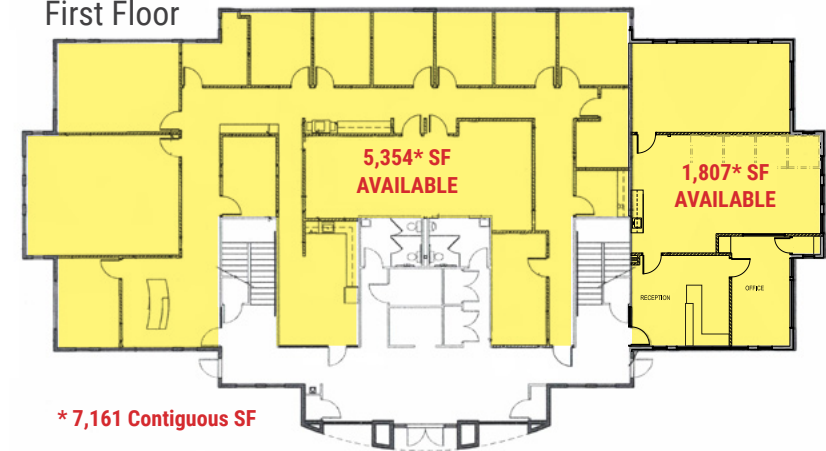


## NORTH BUILDING

Second Floor



First Floor



\*7,161 Contiguous SF

# RIVERDALE BROOKHAVEN I

4905 & 4933 South 1500 West, Riverdale, Utah 84405

