

350 – 390 Congress Parkway, Crystal Lake, IL

± 1,801 – 4,298 SF FOR LEASE

\*PROMO RATE \$9.95/PSF 1<sup>st</sup> Year



## SPECIFICATIONS

AVAILABLE SIZE: 1,801 – 4,298 SF

LAND AREA: 3.88 Acres

PARKING: 5 Cars / 1,000 SF

**LEASE RATE: \$9.95\* PSF Modified Gross**

\*Promotional rate available to the first (new tenants only) who signs a 5+ year lease with standard T.I package; 1<sup>st</sup> year rate = \$9.95psf MG, 2<sup>nd</sup> year = \$12.50psf, 3<sup>rd</sup> year = \$15psf, year 4-5 + 3% annual escalations. Promotional rate is limited to Suites H and J.

- Excellent Location Just Northwest of the Route 14 & Route 31 Intersection
- Single-Story Office Suites with Private Entrances and Utilities Individually Metered
- Professionally Owned and Managed

### Contact:

Mike DeSerto  
224-588-3026  
mdeserto@entrecmercial.com

Cory Kay  
224-532-2497  
ckay@entrecmercial.com



[www.entrecmercial.com](http://www.entrecmercial.com)

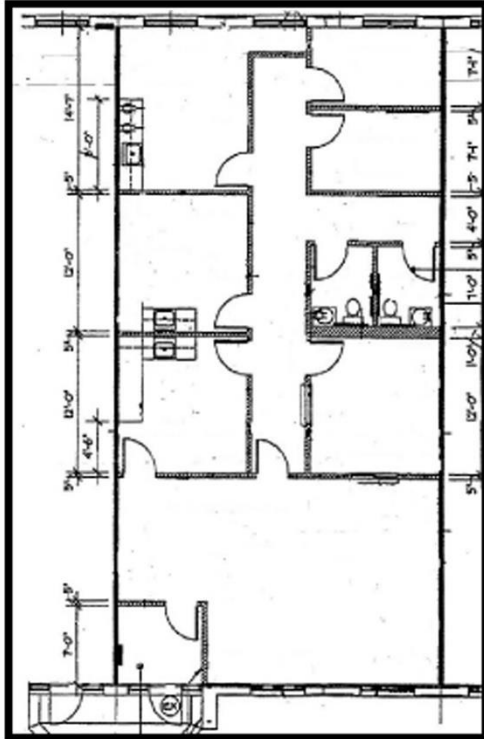
3550 Salt Creek Lane, Suite 104, Arlington Heights, IL. 60005

**ENTRE**  
Commercial Realty LLC

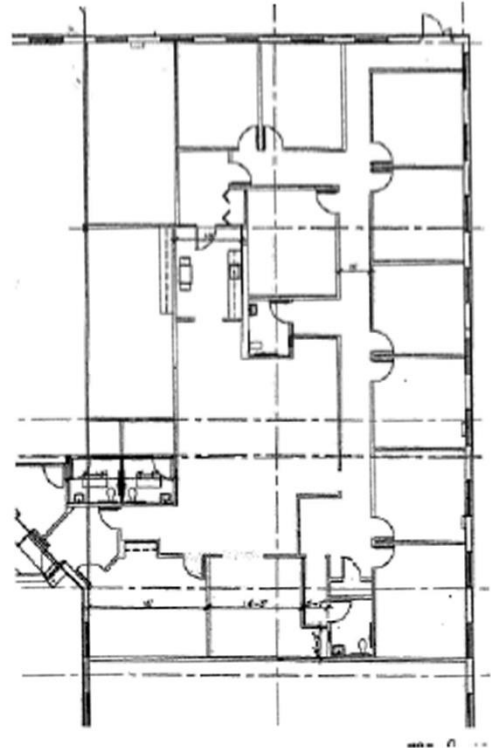
350 – 390 Congress Parkway, Crystal Lake, IL

± 1,801 – 4,298 SF FOR LEASE

Unit 390 – H  
Medical Office  
1,801 SF



Unit 390 – J  
General Office  
4,298 SF



## Contact:

Mike DeSerto  
224-588-3026  
mdeserto@entrecommercial.com

Cory Kay  
224-532-2497  
ckay@entrecommercial.com



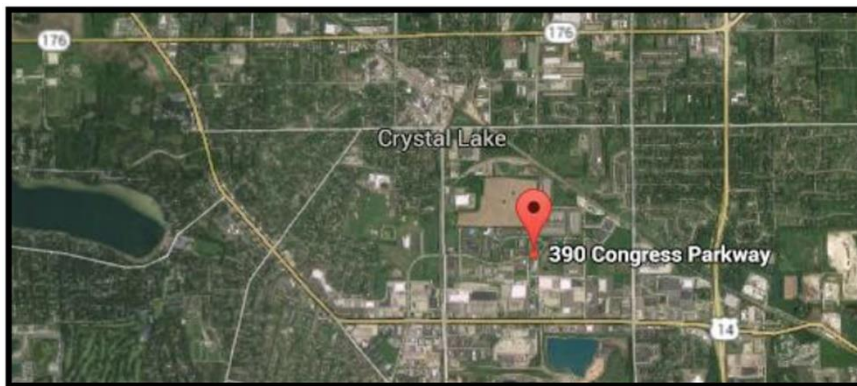
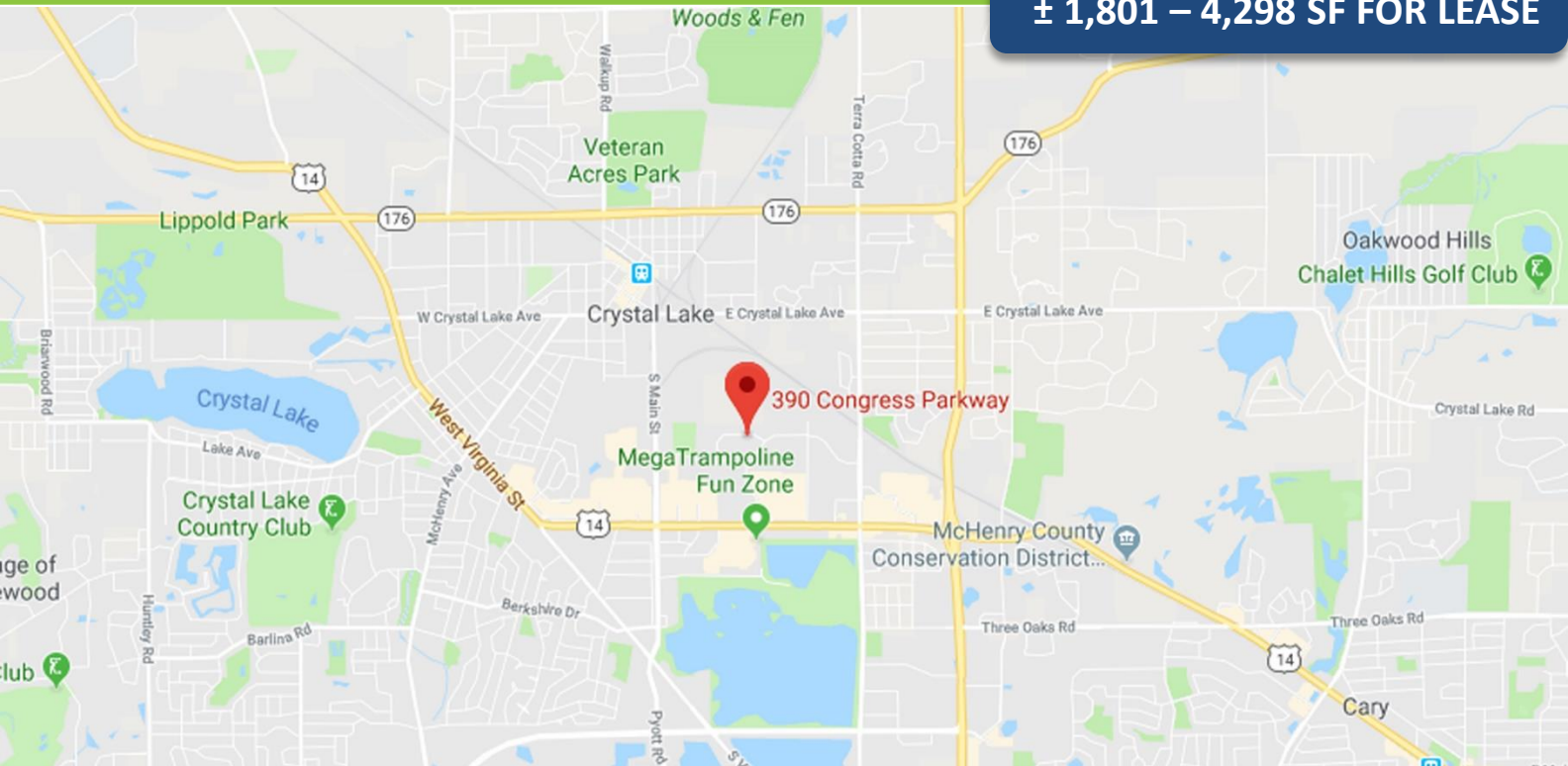
[www.entrecommercial.com](http://www.entrecommercial.com)

3550 Salt Creek Lane, Suite 104, Arlington Heights, IL. 60005

**ENTRE**  
Commercial Realty LLC

## 350 – 390 Congress Parkway, Crystal Lake, IL

± 1,801 – 4,298 SF FOR LEASE

**Contact:**

Mike DeSerto  
224-588-3026  
mdeserto@entrecmercial.com

Cory Kay  
224-532-2497  
ckay@entrecmercial.com

[www.entrecmercial.com](http://www.entrecmercial.com)

3550 Salt Creek Lane, Suite 104, Arlington Heights, IL. 60005

**ENTRE**  
Commercial Realty LLC