

## Jackson Professional Center

12535 15th Avenue  
Seattle, WA

Space sizes available range from  
150 SF to 8,600 SF

Flexible lease terms: short or  
long term

Easy to find building with good  
street exposure

Local building ownership

Ample free parking

Close proximity to I-5,  
Northgate, and business  
services amenities

Unique signage opportunities



### Location



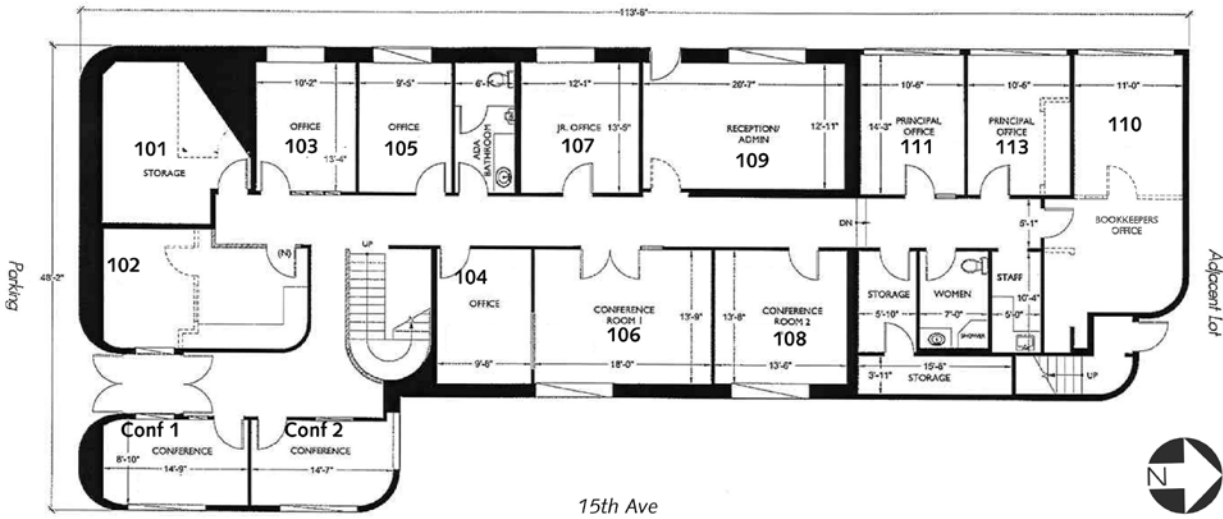
### Contact

**Todd Battison**  
206.296.9621  
toddb@kiddermathews.com

## Jackson Professional Center

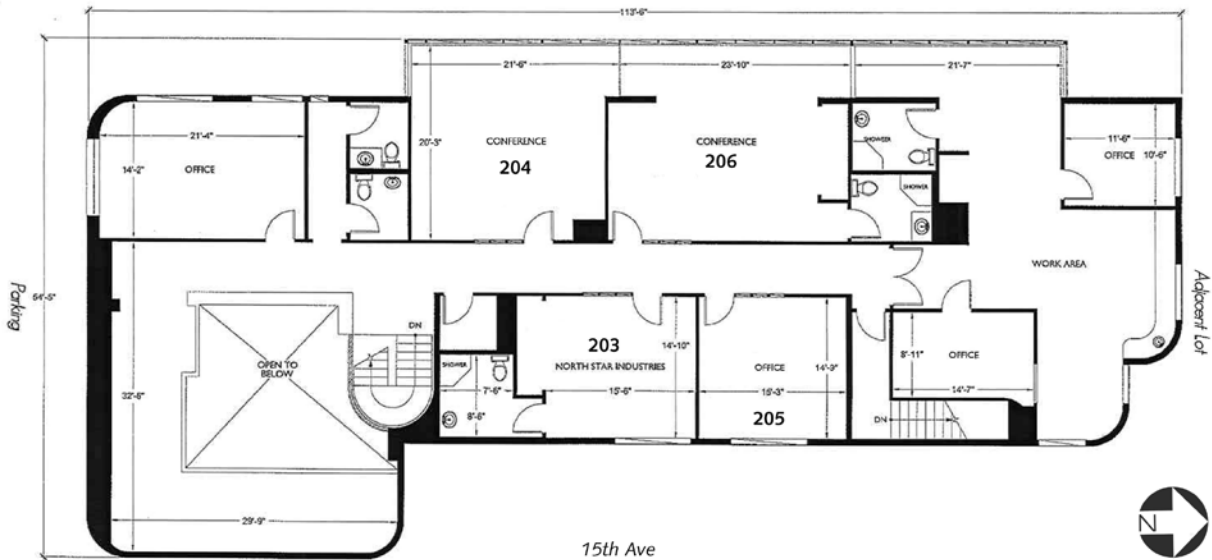
First Floor

Parking



Second Floor

Parking



### Contact

**Todd Battison**

206.296.9621

toddb@kiddermathews.com