

19 LUDLOW ROAD, WESTPORT, CONNECTICUT



OFFICE SPACE FOR LEASE

1,488 - 2,810 RSF

Location: Convenient to downtown & train

Parking: Ample garage and surface parking

Space offers: A combination of private offices and open space

- Attractive modern building
- Upgraded common areas
- Conveniently located
- Professional setting

Contact David Fugitt, SIOR
203.226.7101 ext. 5
Email: david@vidalwettenstein.com



All information from sources deemed reliable and is submitted subject to errors, omissions, change of price, rental, and property sale and withdrawal notice.



SIOR

Individual Members

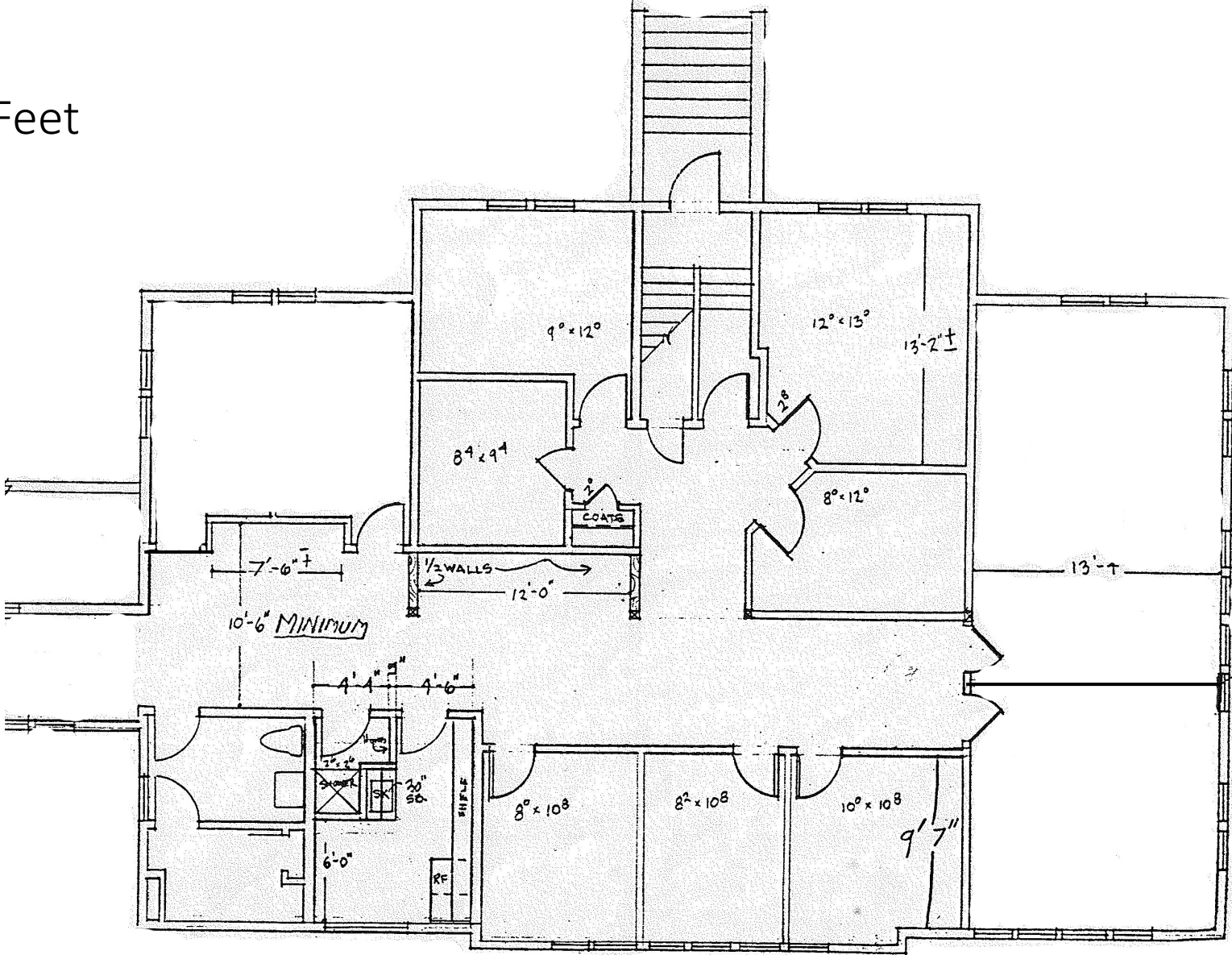
Society of Industrial and Office Realtors

VIDAL/WETTENSTEIN, LLC

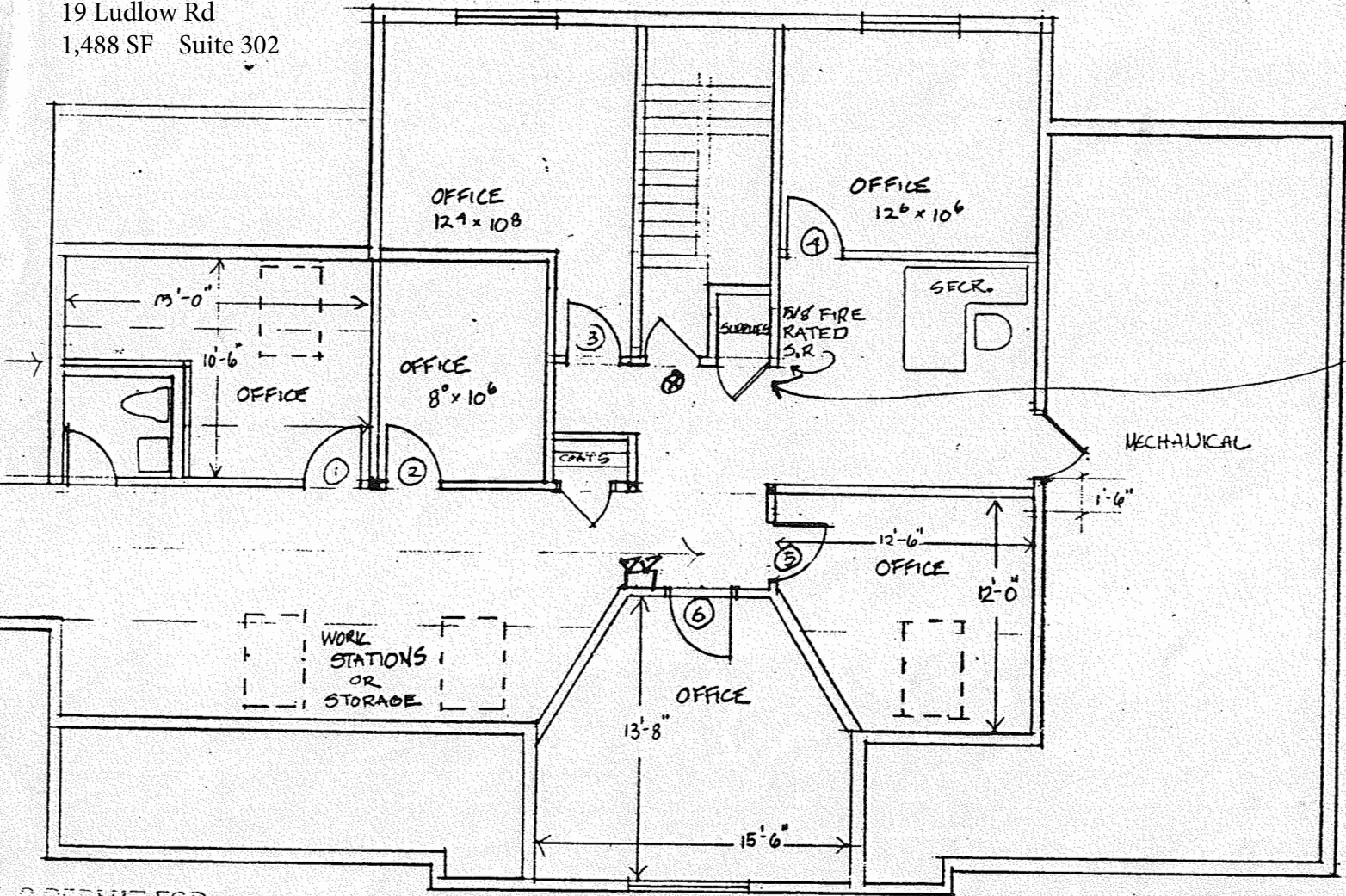
719 Post Road East, Westport, CT 06880

www.vidalwettenstein.com

19 Ludlow
Suite 102
2,810 Square Feet



19 Ludlow Rd
1,488 SF Suite 302



A PERMIT FOR