

LAND OFFICE INDUSTRIAL RETAIL INVESTMENTS

Revere Place Office Space For Lease

6551 S. Revere Parkway, Centennial, CO 80111

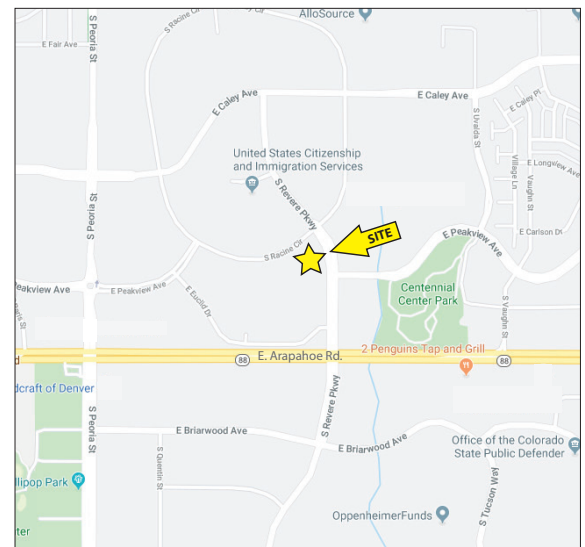


www.FullerRE.com



BUILDING FEATURES:

- * Suites available from 819± SF to 1,597± SF
- * Building Size: 48,314± SF
- * NEW OWNERSHIP, local management and maintenance staff
- * YOC: 1982
- * Parking ratio of 3:1,00 SF, all surface, no cost (143 spaces)
- * Common area conference room
- * Numerous nearby restaurant and retail amenities
- * Showers, lockers and Comcast internet to building
- * Easy access off Arapahoe Road
- * **FOR LEASE: \$19.00/SF full service lease rate**

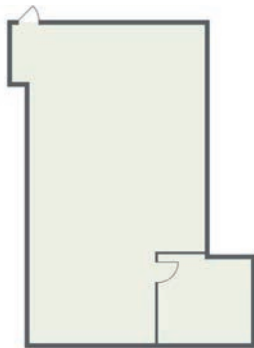


Fuller Real Estate
(303) 534-4822

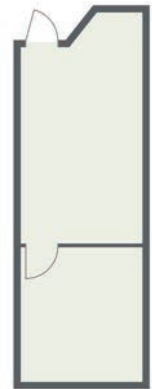
David Gagliano
720.287.5413 direct
303.818.3618 mobile
DGagliano@FullerRE.com



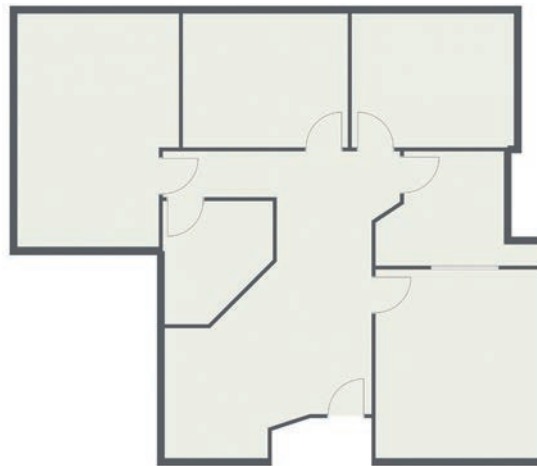
Suite 112
1,503± SF



Suite 235
910± SF

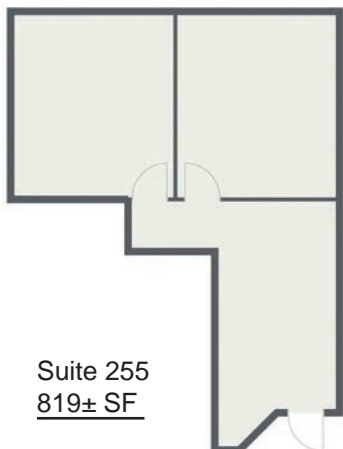


Suite 285
1,597± SF



Floorplans provided as a visual reference and may not be totally accurate. Doors and/or walls may have been moved since the creation of these drawings.

Suite 255
819± SF



Suite 110
1,090± SF

