

THE COURTYARDS

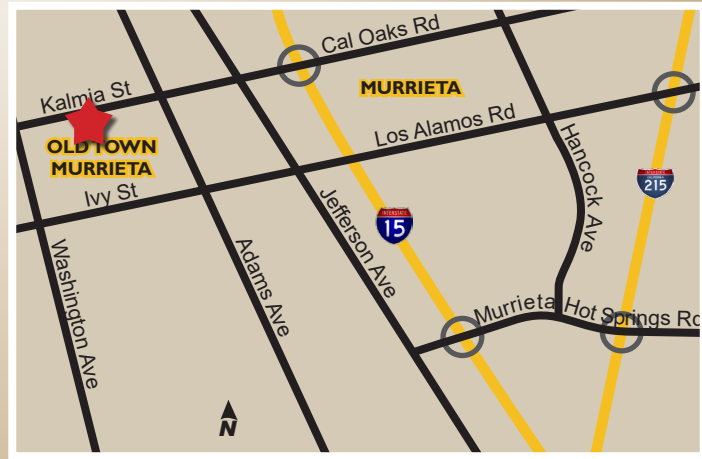
41880 KALMIA STREET | MURRIETA, CA

OFFICE SUITE FOR LEASE



Features:

- Convenient access to the I-15 Freeway @ California Oaks Road/Kalmia Street
- Highly visible location within walking distance of new Civic Center, retail stores & restaurants
- Two ±18,000 SF single story courtyard-style building
- Verizon FIOS enabled
- Common area rest rooms are located within the building
- Parking ratio 4:1,000 SF
- Monument signage available
- Move-in ready suites
- See attached availability & floor plans
- **NO BUILDING CORE FACTOR**



LEASE RATE: \$1.75/SF MG*

For More Information, Please Contact:



MARY PIPER | (951) 445-4516
mpiper@leetemecula.com
DRE #01268829

SHERI SHOEMAKER | (951) 445-4510
sshoemaker@leetemecula.com
DRE #00846946

No warranty or representation has been made to the accuracy of the foregoing information. Terms of sale or lease and availability are subject to change or withdrawal without notice.
Lee & Associates Commercial Real Estate Services, Inc. - Riverside. 25240 Hancock Avenue, Suite 100 - Murrieta, CA 92562 | Corporate ID# 01048055

THE COURTYARDS

41880 KALMIA STREET | MURRIETA, CA

OFFICE SUITE FOR LEASE

41870 Kalmia Street

SUITE	SQUARE FEET (No core factor added)	AVAILABILITY	DESCRIPTION
100% Leased			
Contact Agent For Touring Instructions *Modified Gross does not include in-suite janitorial or electricity.			

41880 Kalmia Street

SUITE	SQUARE FEET (No core factor added)	AVAILABILITY	DESCRIPTION
130	±987	3/15/2020	Reception, Three Private Offices, Open Work Area and Coffee Bar.
Contact Agent For Touring Instructions *Modified Gross does not include in-suite janitorial or electricity.			

Rev. 03/02/2020



For More Information, Please Contact:



MARY PIPER | (951) 445-4516
mpiper@leetemecula.com
DRE #01268829

SHERI SHOEMAKER | (951) 445-4510
sshoeemaker@leetemecula.com
DRE #00846946

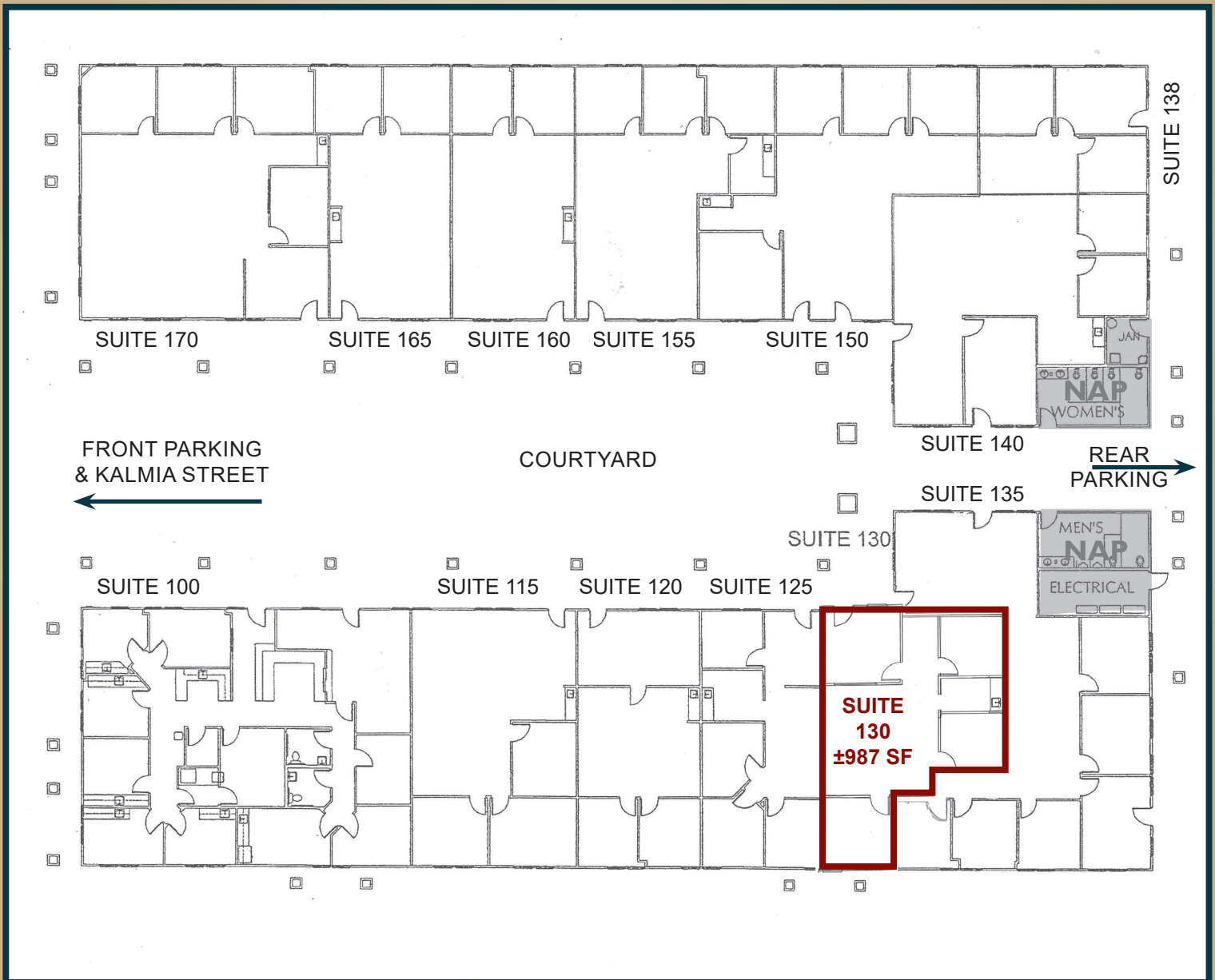
No warranty or representation has been made to the accuracy of the foregoing information. Terms of sale or lease and availability are subject to change or withdrawal without notice.
Lee & Associates Commercial Real Estate Services, Inc. - Riverside. 25240 Hancock Avenue, Suite 100 - Murrieta, CA 92562 | Corporate ID# 01048055

THE COURTYARDS

41880 KALMIA STREET | MURRIETA, CA

OFFICE SUITE FOR LEASE

41880 Kalmia Street



For More Information, Please Contact:



MARY PIPER | (951) 445-4516
mpiper@leetemecula.com
DRE #01268829

SHERI SHOEMAKER | (951) 445-4510
sshoeaker@leetemecula.com
DRE #00846946

THE COURTYARDS

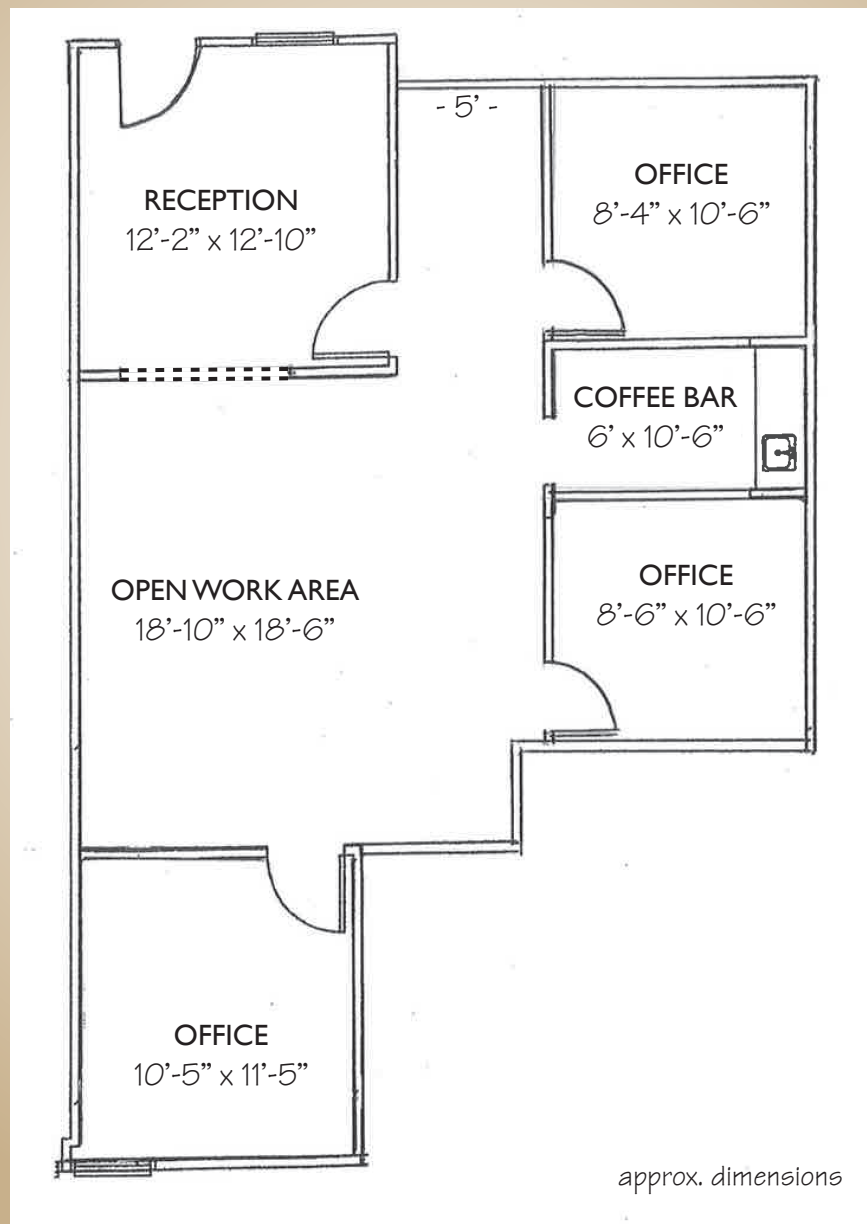
41880 KALMIA STREET | MURRIETA, CA

OFFICE SUITE FOR LEASE

41880 Kalmia Street

Suite 130

±987 SF



For More Information, Please Contact:



MARY PIPER | (951) 445-4516
mpiper@leetemecula.com
DRE #01268829

SHERI SHOEMAKER | (951) 445-4510
sshoeemaker@leetemecula.com
DRE #00846946