

RIVERPARKE BUILDING OFFICE SUITES FOR LEASE

1653 Merriman Road, Akron, OH 44313



OVERVIEW

Office suites in the beautiful Riverparke Building at the intersection of Merriman Valley and N. Portage Path in the Merriman Valley. We have three office suites available for lease. The first floor space, Suite 101, is approximately 977 SF and is located near the main entrance. We also have two suites on the second floor which is accessible by elevator. Suite 204 is approximately 3,390 SF and is made up of several office spaces as well as several open areas. Suite 210 is approximately 2,025 SF which consists of six offices, a conference room, kitchenette, and reception area. This space has a lot of windows.

The lease rates are full service, so they include utilities and cleaning. This property also has some covered parking available.

AVAILABLE SUITES

Suite 101 | 977 SF | \$12.00 SF/YR

Suite 204 | 3,390 SF | \$9.00 SF/YR

Suite 210 | 2,025 SF | \$12.00 SF/YR

Lease rate includes utilities and cleaning.



Lease Rate:

\$9.00-12.00 SF/YR
(Full Service)



Available SF:

977-3,390 SF



Zoning:

U-3 Retail Business



Lot Size:

1.13 Acres

OUR NETWORK IS YOUR EDGE.

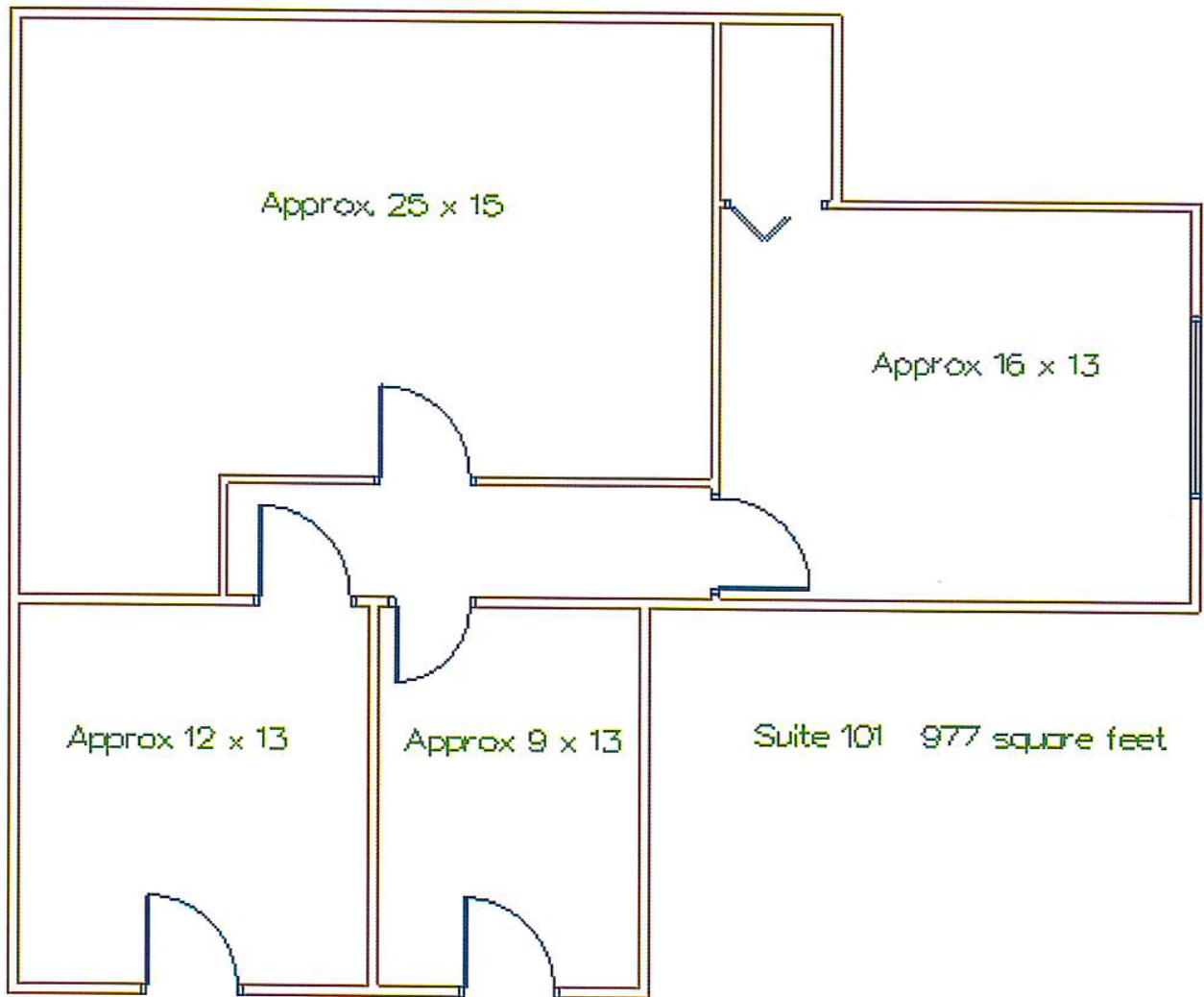
All information is from sources deemed reliable and is subject to errors, omissions, change of price, rental, prior sale, and withdrawal without notice. Prospect should carefully verify each item of information contained herein.

Ed Jesson

O: 330.940.9360

C: 330.760.4494

ejesson@HoffLeigh.com



OUR NETWORK IS YOUR EDGE.

All information is from sources deemed reliable and is subject to errors, omissions, change of price, rental, prior sale, and withdrawal without notice. Prospect should carefully verify each item of information contained herein.

Ed Jesson

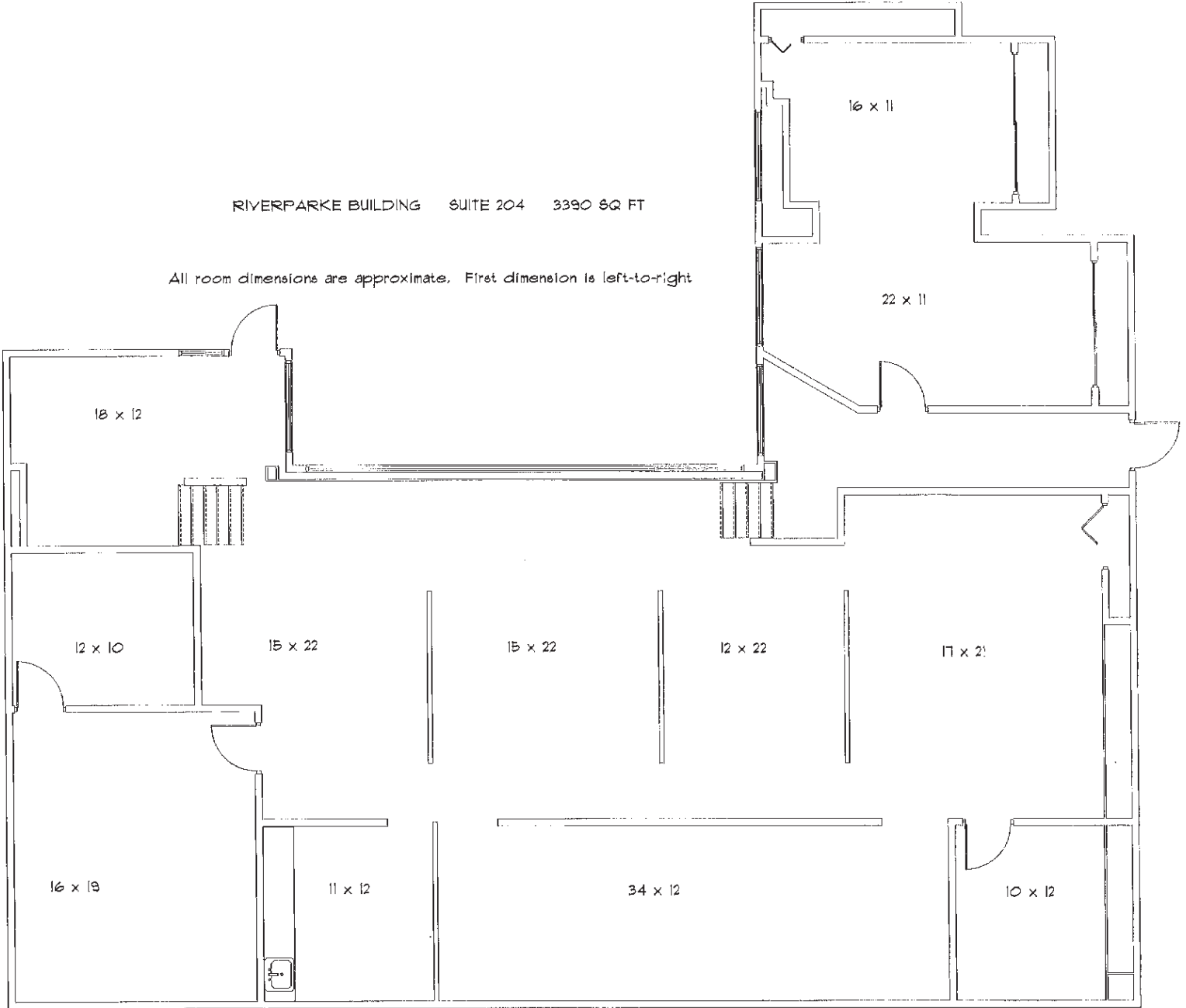
O: 330.940.9360

C: 330.760.4494

ejesson@HoffLeigh.com

RIVERPARKE BUILDING SUITE 204 3390 SQ FT

All room dimensions are approximate. First dimension is left-to-right



OUR NETWORK IS YOUR EDGE.

All information is from sources deemed reliable and is subject to errors, omissions, change of price, rental, prior sale, and withdrawal without notice. Prospect should carefully verify each item of information contained herein.

Ed Jesson

O: 330.940.9360

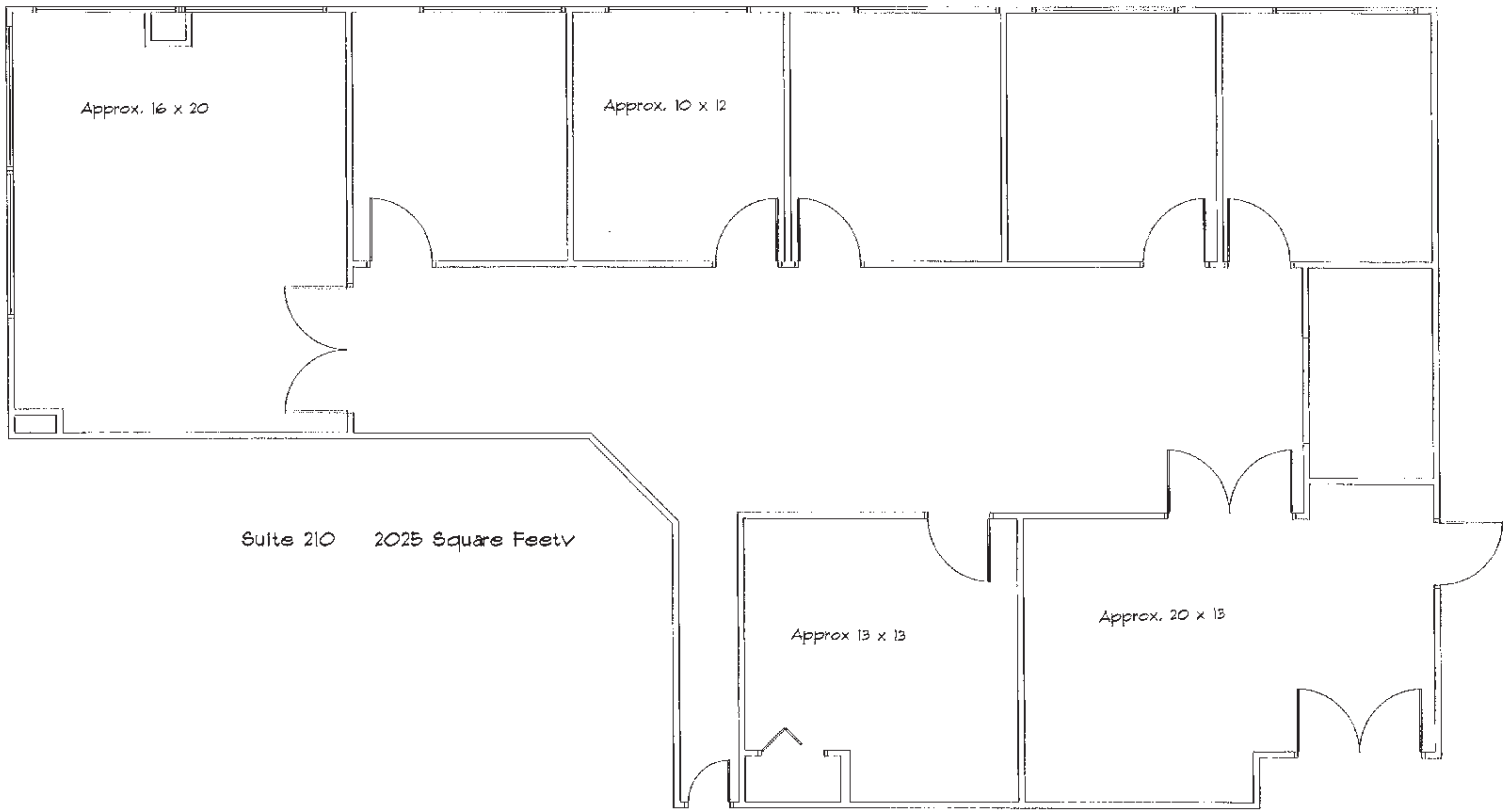
C: 330.760.4494

ejesson@HoffLeigh.com



RIVERPARKE BUILDING OFFICE SUITES FOR LEASE

1653 Merriman Road, Akron, OH 44313



OUR NETWORK IS YOUR EDGE.

All information is from sources deemed reliable and is subject to errors, omissions, change of price, rental, prior sale, and withdrawal without notice. Prospect should carefully verify each item of information contained herein.

Ed Jesson

O: 330.940.9360

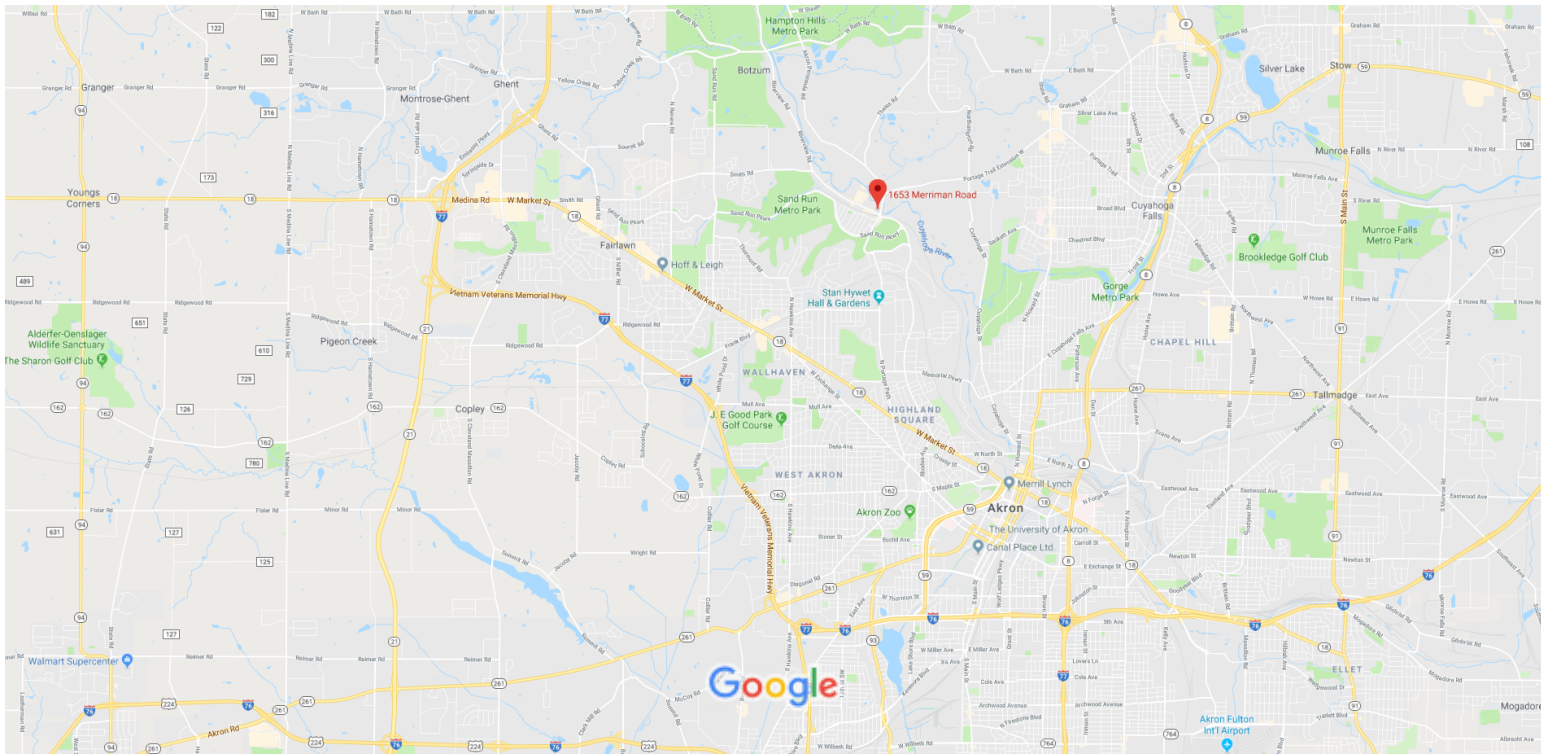
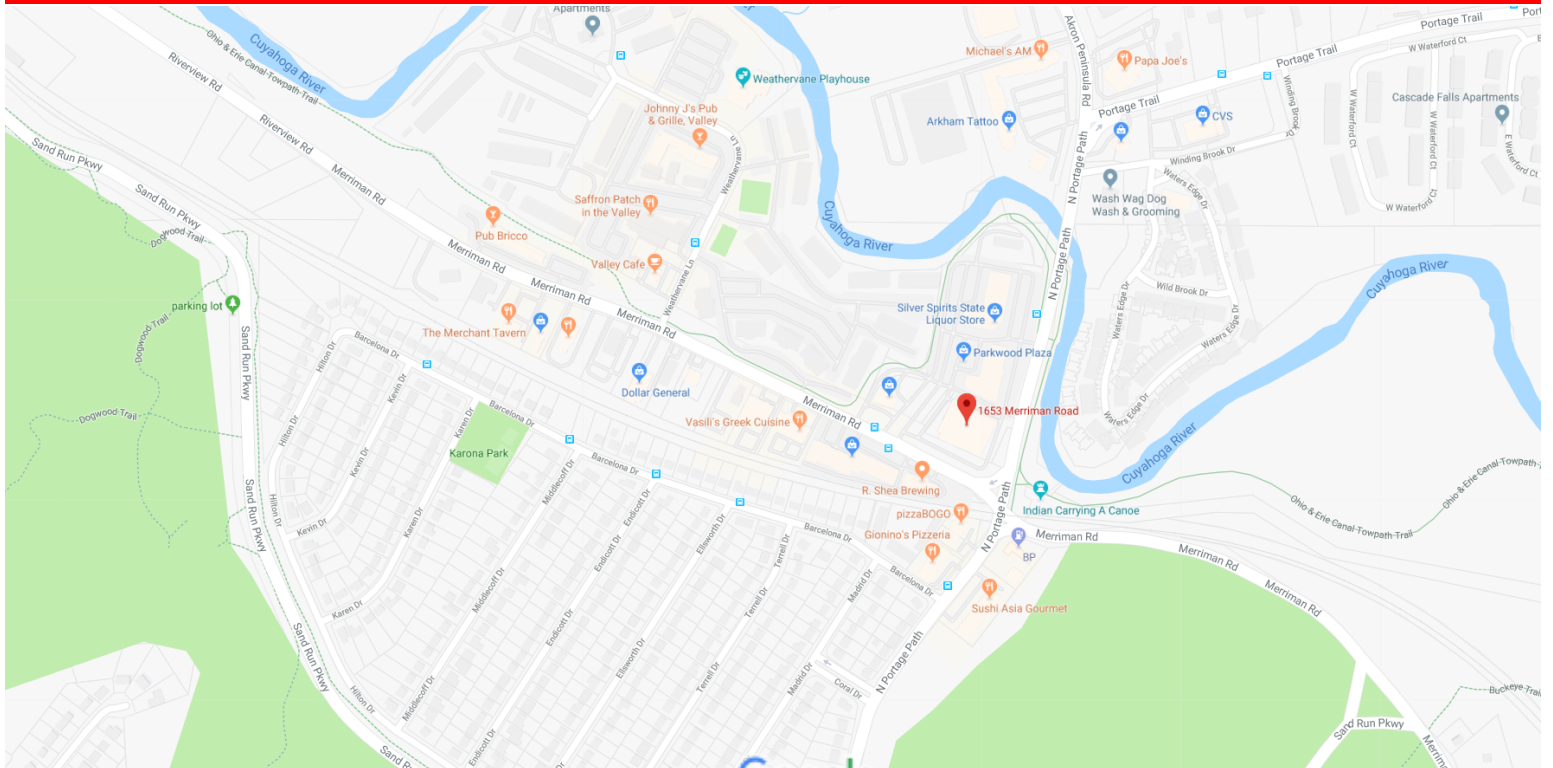
C: 330.760.4494

ejesson@HoffLeigh.com



RIVERPARKE BUILDING OFFICE SUITES FOR LEASE

1653 Merriman Road, Akron, OH 44313



OUR NETWORK IS YOUR EDGE.

All information is from sources deemed reliable and is subject to errors, omissions, change of price, rental, prior sale, and withdrawal without notice. Prospect should carefully verify each item of information contained herein.

Ed Jesson

O: 330.940.9360

C: 330.760.4494

ejesson@HoffLeigh.com