

# For Lease

2220 Douglas Boulevard, Roseville, CA



As exclusive agents, we are pleased to offer the following space:

**Suite 180**  
**±1,223 RSF**

- ◆ Achieved LEED® EB Gold Certification in 2010
- ◆ Energy Efficient Solar Panels on Rooftop
- ◆ Energy Star Rated Building
- ◆ Building Signage is Negotiable
- ◆ Featuring a State-of-the-Art Conference Facility
- ◆ Full Service Deli – Outdoor Dining Area
- ◆ Excellent On-Site Professional Property Management and Responsible Ownership
- ◆ Close Proximity to Restaurants and Retail Services
- ◆ Award-Winning Architectural Design
- ◆ Fiber Ready Building



**TWINTREES**  
LAND COMPANY



**Elaine Hartin** Senior Managing Director 916.367.6344 [ehartin@newmarkccarey.com](mailto:ehartin@newmarkccarey.com) CA RE License #01047857

**Tom Heacox** Executive Managing Director 916.569.2315 [theacox@newmarkccarey.com](mailto:theacox@newmarkccarey.com) CA RE License #00913198

**Matt Heacox** Director 916.569.2314 [mheacox@newmarkccarey.com](mailto:mheacox@newmarkccarey.com) CA RE License #01451720

**Newmark**  
**Knight Frank**

3005 Douglas Boulevard, Suite 130, Roseville, CA 95661

[www.newmarkccarey.com](http://www.newmarkccarey.com)

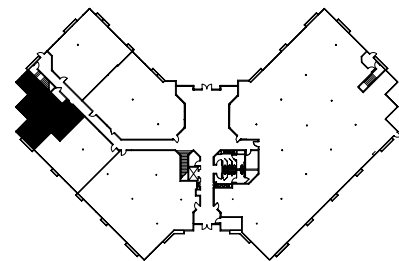
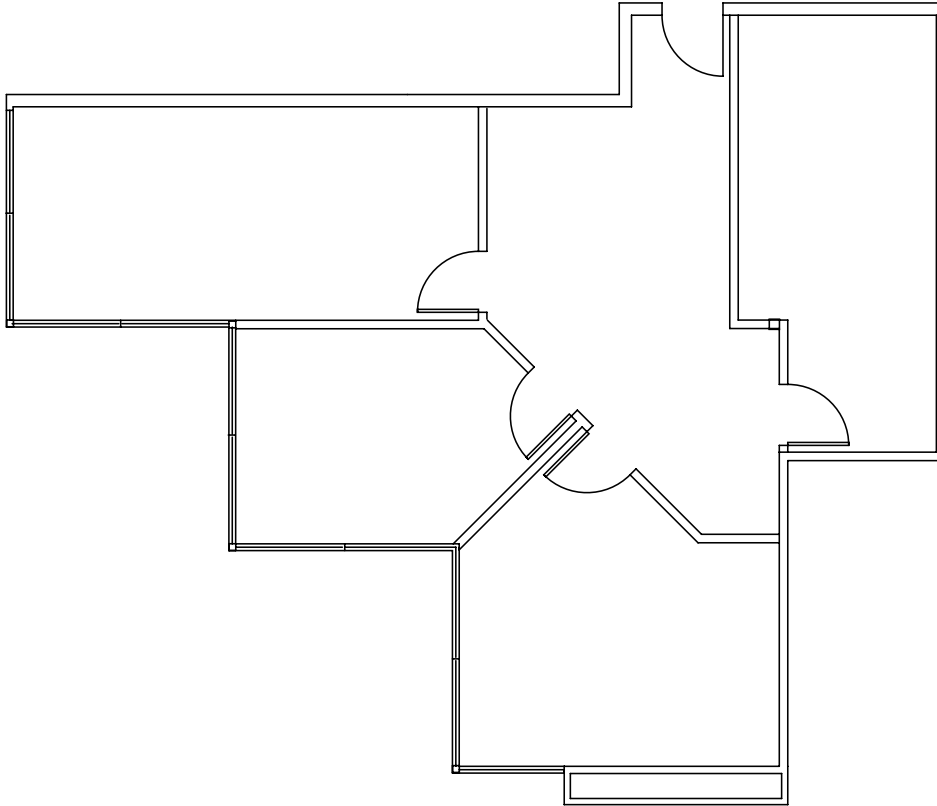
Procuring broker shall only be entitled to a commission, calculated in accordance with the rates approved by our principal only if such procuring broker executes a brokerage agreement acceptable to us and our principal and the conditions as set forth in the brokerage agreement are fully and unconditionally satisfied. Although all information furnished regarding property for sale, rental, or financing is from sources deemed reliable, such information has not been verified and no express representation is made nor is any to be implied as to the accuracy thereof and it is submitted subject to errors, omissions, change of price, rental or other conditions, prior sale, lease or financing, or withdrawal without notice and to any special conditions imposed by our principal.

# For Lease

2220 Douglas Boulevard, Roseville, CA



Suite 180  
±1,223 RSF



**Elaine Hartin** Senior Managing Director 916.367.6344 [ehartin@newmarkccarey.com](mailto:ehartin@newmarkccarey.com) CA RE License #01047857

**Tom Heacox** Executive Managing Director 916.569.2315 [theacox@newmarkccarey.com](mailto:theacox@newmarkccarey.com) CA RE License #00913198

**Matt Heacox** Director 916.569.2314 [mheacox@newmarkccarey.com](mailto:mheacox@newmarkccarey.com) CA RE License #01451720

**Newmark  
Knight Frank**

3005 Douglas Boulevard, Suite 130, Roseville, CA 95661

[www.newmarkccarey.com](http://www.newmarkccarey.com)

Procuring broker shall only be entitled to a commission, calculated in accordance with the rates approved by our principal only if such procuring broker executes a brokerage agreement acceptable to us and our principal and the conditions as set forth in the brokerage agreement are fully and unconditionally satisfied. Although all information furnished regarding property for sale, rental, or financing is from sources deemed reliable, such information has not been verified and no express representation is made nor is any to be implied as to the accuracy thereof and it is submitted subject to errors, omissions, change of price, rental or other conditions, prior sale, lease or financing, or withdrawal without notice and to any special conditions imposed by our principal.