



Lone Peak Center Two

# LONE PEAK CENTER CAMPUS

MAIER SIEBEL BABER



# LONE PEAK CENTER



LONE PEAK CENTER 2 MAIN LOBBY



LONE PEAK CENTER 3 MAIN LOBBY

## PROPERTY FEATURES:

- Available Suites Range From 3,656 RSF - 25,976 RSF
- Full Floor Opportunity
- \$26.00 - \$28.00 / SF, Full Service
- 5/1,000 parking ratio available
- Surface Parking
- Building Exterior Signage Available to Qualified Tenants
- Superior Access to I-15 Via 123<sup>rd</sup> and 114<sup>th</sup> South
- Shuttle service to and from TRAX and FrontRunner

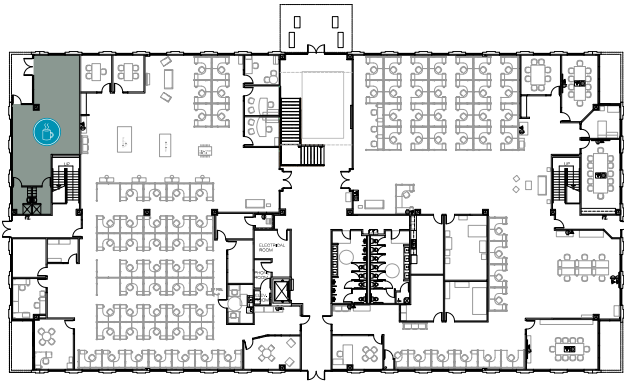
## CAMPUS UPGRADES:

- On-Campus E-Charge Stations and Multimodal Shuttle
- Complete Interior Lobby Remodel
- New Central 'Park' with an Outdoor Assembly and Eating Area
- Café/Coffee Shop and Dining Facility
- High Density Infrastructure
- Volleyball Court
- Expanded Fitness Center





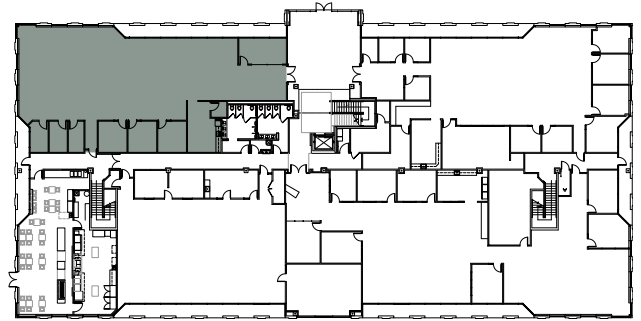
## LONE PEAK CENTER 2



COFFEE SHOP: 1,194 RSF



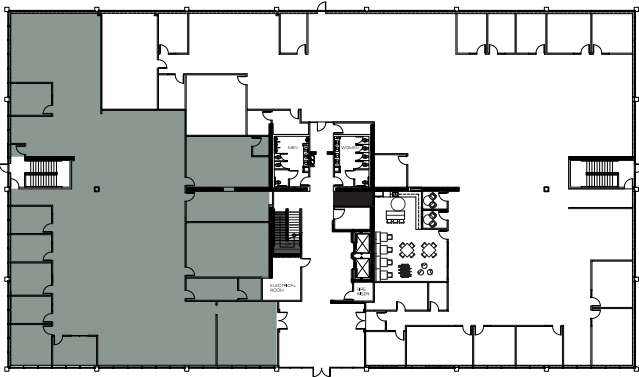
## LONE PEAK CENTER 3



SUITE 150: 4,751 RSF



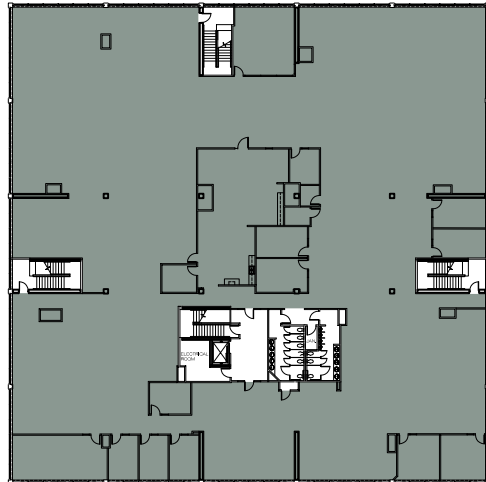
## LONE PEAK CENTER 6



SUITE 100: 10,288 RSF  
AVAILABLE IMMEDIATELY



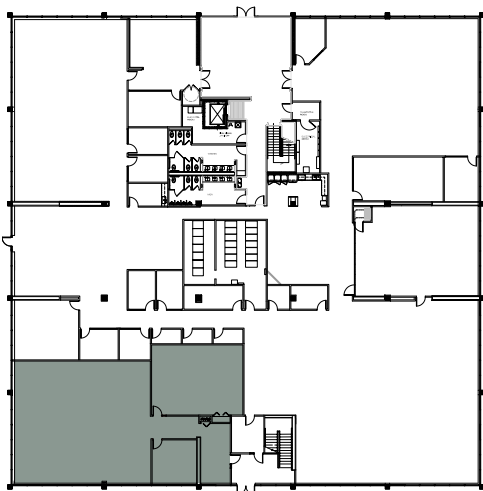
## LONE PEAK CENTER 7



SUITE 200: 25,976 RSF



## LONE PEAK CENTER 8

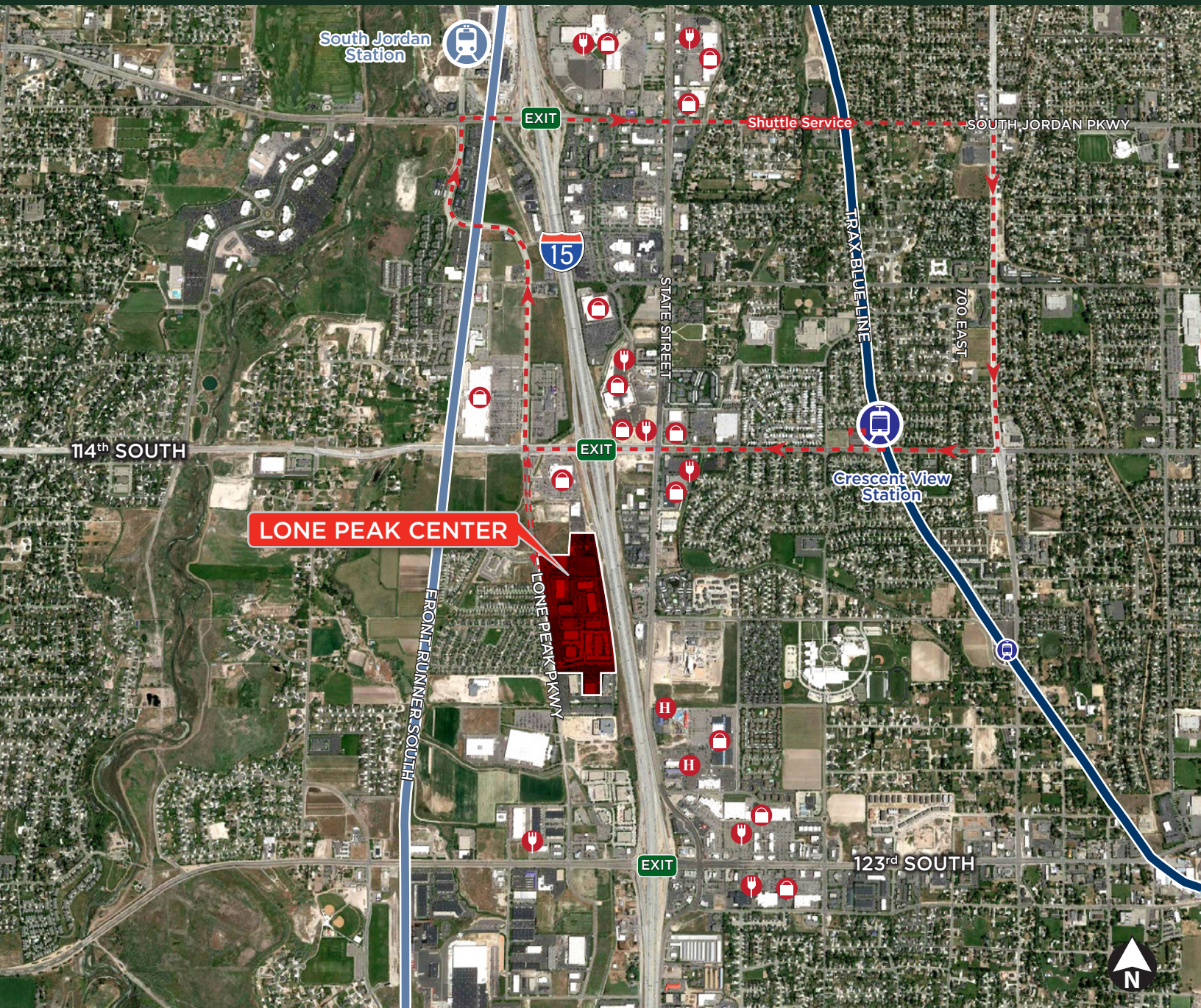


SUITE 150: 3,656 RSF AVAILABLE IMMEDIATELY





# LONE PEAK CENTER



DANA BAIRD, CCIM  
Executive Director  
(801) 303 5526  
dana.baird@cushwake.com

AMANDA LAWSON  
Associate  
(801) 303 5492  
amanda.lawson@cushwake.com

MIKE RICHMOND  
Executive Director  
(801) 303 5434  
mike.richmond@cushwake.com

MAIER SIEBEL BABER

