



PINNACLE REALTY
OF NEW YORK, LLC

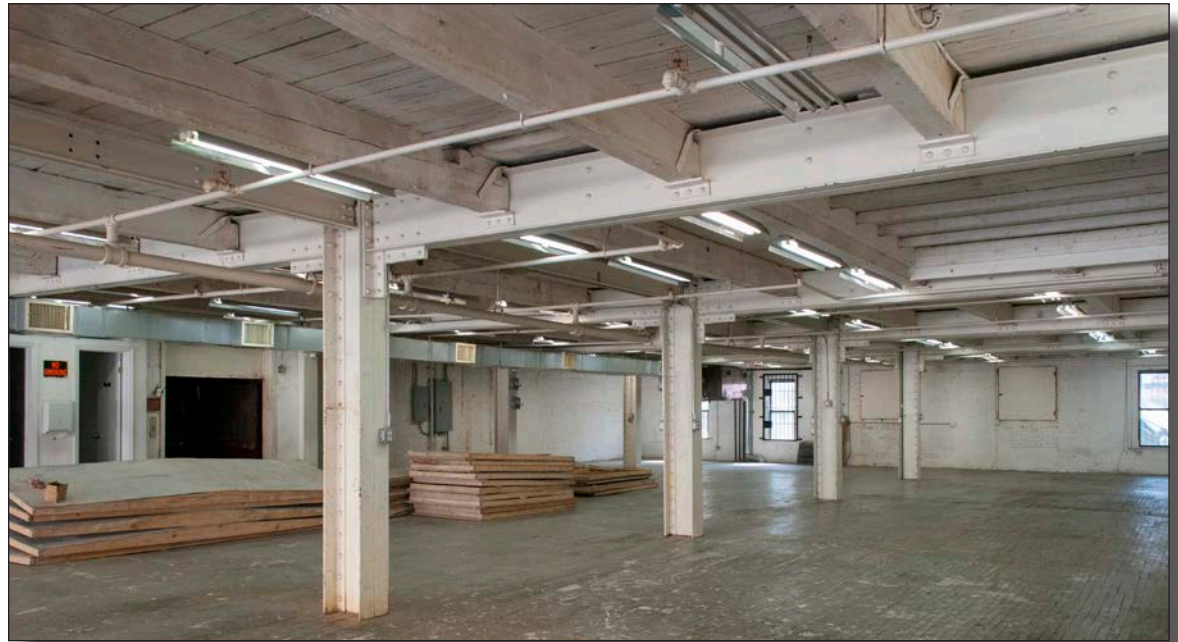
5113-5119 2ND AVE, BROOKLYN

5,000 - 21,000 SQ. FT. MULTI-STORY LOFT BUILDING
A UNIQUE OPPORTUNITY IN SUNSET PARK

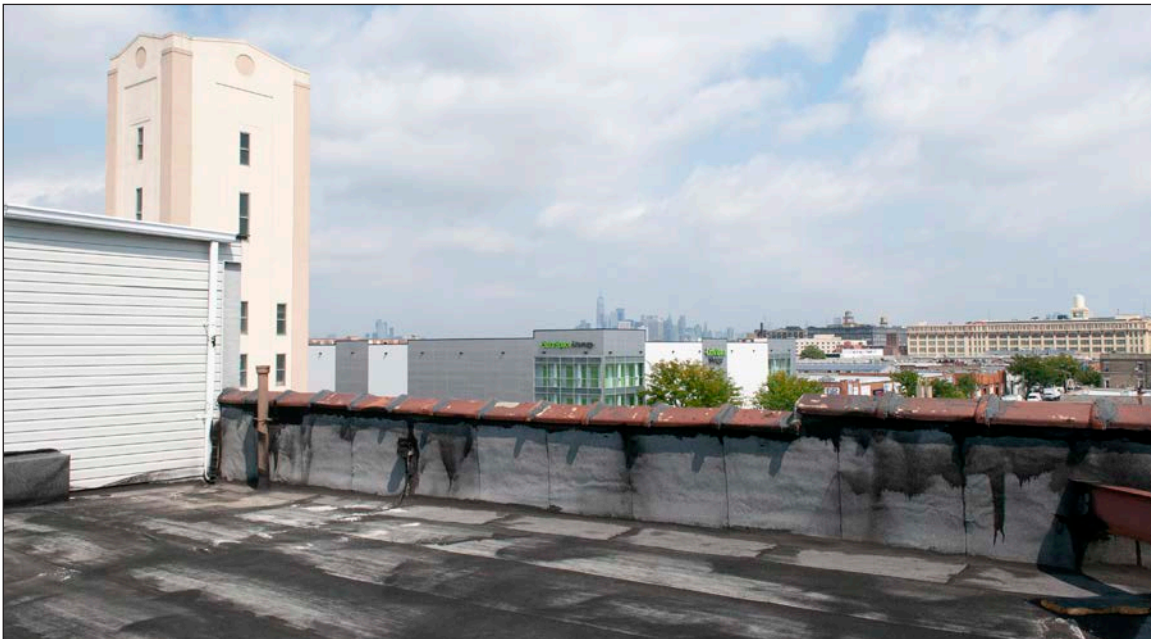
5113-5119 2nd Avenue is a 20,000 Sq. Ft. multi-story loft building located in the Sunset Park neighborhood of Brooklyn. The building features three floors and a full basement, each at 5,000 Sq. Ft., two double-wide drive-in doors, and two loading positions. The entire building is fully air conditioned, heated, and sprinklered, and equipped with a freight elevator that services all floors.

With ample natural light and a short walk to the subway at 53rd Street, **5113-5119 2nd Avenue** offers a unique opportunity ideal for creative studios, gallery space, retail, office, and many other uses.

LEASE PRICE: Upon Request



FIRST FLOOR



ROOF, MANHATTAN VIEW

PROPERTY OVERVIEW

Block:	797
Lot:	3
Neighborhood:	Sunset Park
Lot Size:	5,350 Sq. Ft.
Building Size:	21,400 Sq. Ft.
Basement:	5,350 Sq. Ft.
First Floor:	5,350 Sq. Ft.
Second Floor:	5,350 Sq. Ft.
Third Floor:	5,350 Sq. Ft.
Building Dimensions:	53.5' x 100'
Stories:	3 + Basement
Ceiling Height:	11'
Loading:	2 Interior Docks
Zoning:	M1-2D
	<ul style="list-style-type: none">• HVAC• Freight Elevator• Heavy Power



FULL BASEMENT



FIRST FLOOR, GARAGE OPENING



GARAGE OPENING



SECOND FLOOR



THIRD FLOOR



THIRD FLOOR, OPEN PANELS TO SECOND FLOOR



STAIRWELL



FREIGHT ELEVATOR



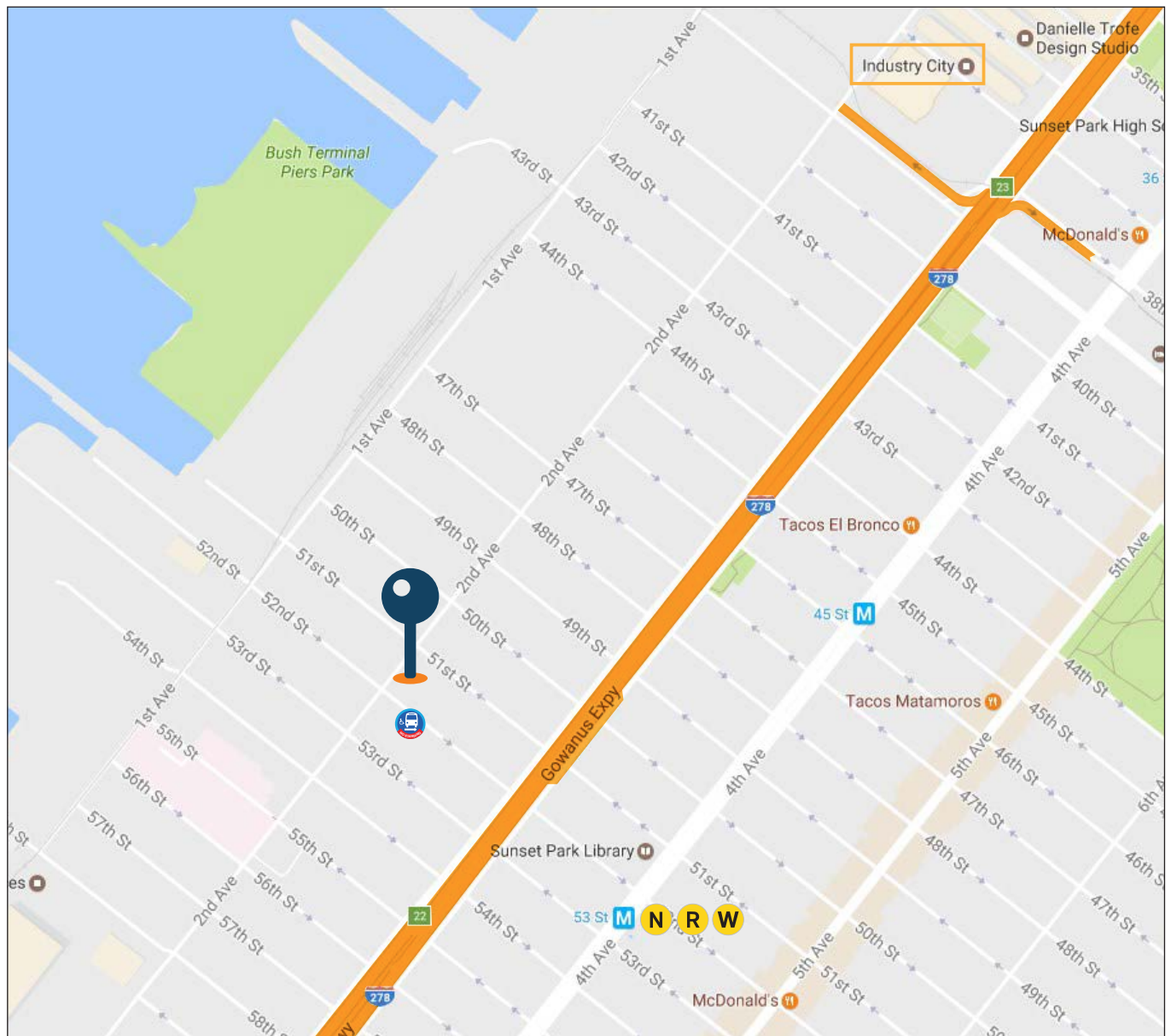
ROOF

TRANSPORTATION

N R W 53 St

 **B11 (52nd St / 2nd Ave)**

 **Gowanus Expressway**



For More Information Contact Exclusive Brokers:

Levi Junik, Salesperson
 ljunik@pinnaclereny.com
 718-371-6401

Eli Seewald, Salesperson
 eseewald@pinnaclereny.com
 718-371-6405

Abraham Lowy, Associate Broker
 alowy@pinnaclereny.com
 718-784-8488