

888 Magnolia Avenue Elizabeth, NJ



+/- 25,000 SF Build-To-Suit

Available for Lease



Building Specifications:

Total Building Size:	24,940 Square Feet
Land:	1.71 acres
Office Space:	To-Suit
Clear Ceiling Height:	Up to 28'
Loading Docks:	6
Drive-In Doors:	1
Parking:	60 car parking

Property Highlights:

- **Delivery 4th Quarter 2017**
- **Ideal Specialty Use Facility**
- **Direct Access to Exit 13A of the NJ Turnpike, I-78, and Route 1/9**
- **Direct Access to Ports of Elizabeth and Newark**
- **Approximately 1 mile from Newark Liberty International Airport**



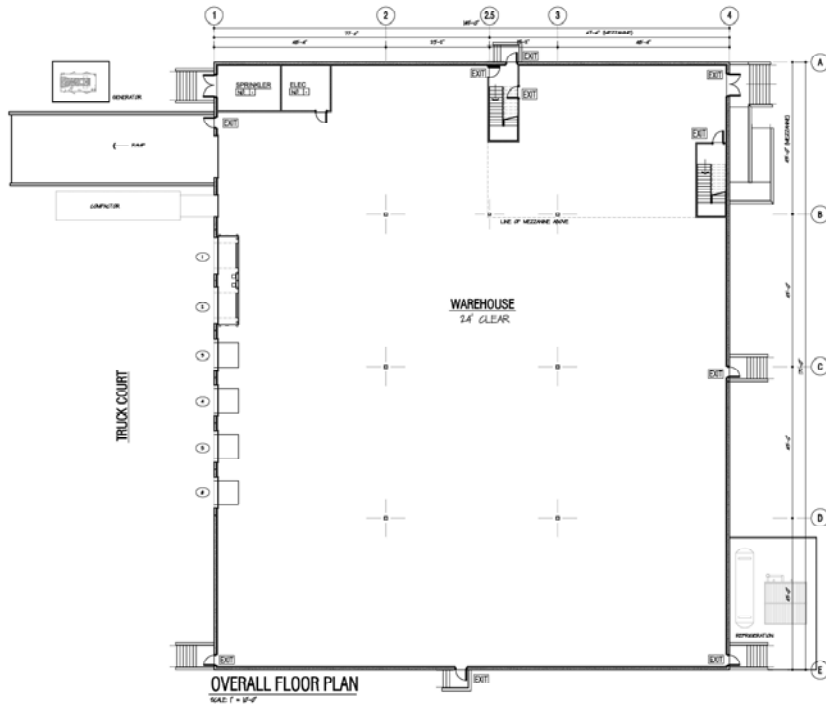
For more information please contact:
Terry Armstrong | Vice President
PORTVIEW REALTY SERVICES, LLC
(o) 908.272.7555 (c) 201.446.3613
terry@portviewrealty.com
Licensed Real Estate Broker

www.portviewrealty.com

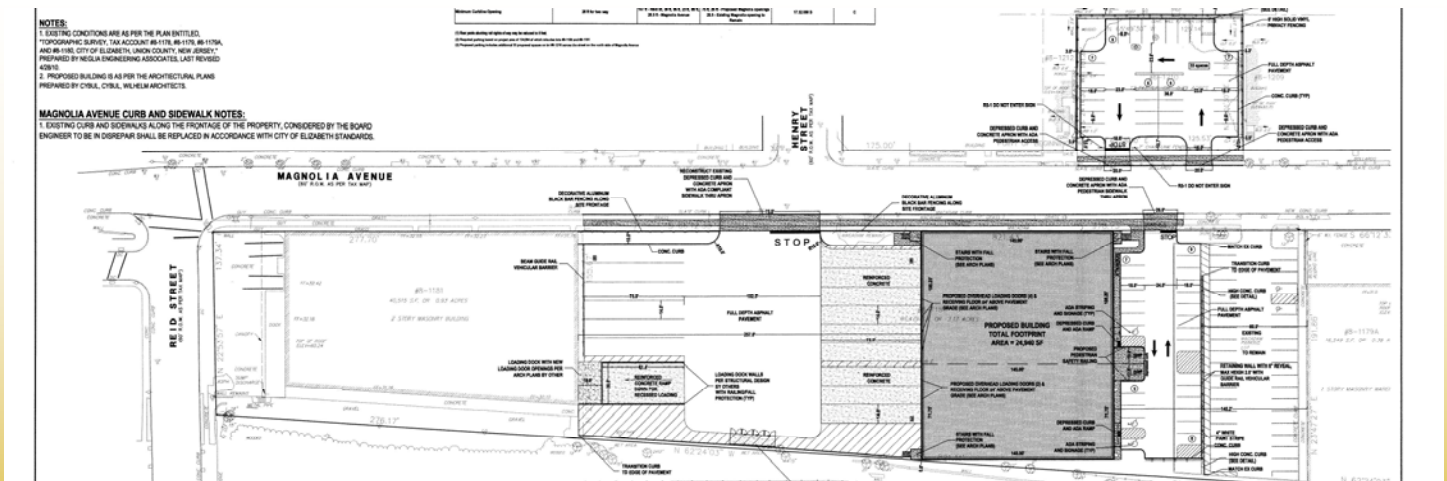
888 Magnolia Avenue Elizabeth, NJ



Floor Plan:



Site Plan:



For more information please contact:
 Terry Armstrong | Vice President
 PORTVIEW REALTY SERVICES, LLC
 (o) 908.272.7555 (c) 201.446.3613
 terry@portviewrealty.com
 Licensed Real Estate Broker

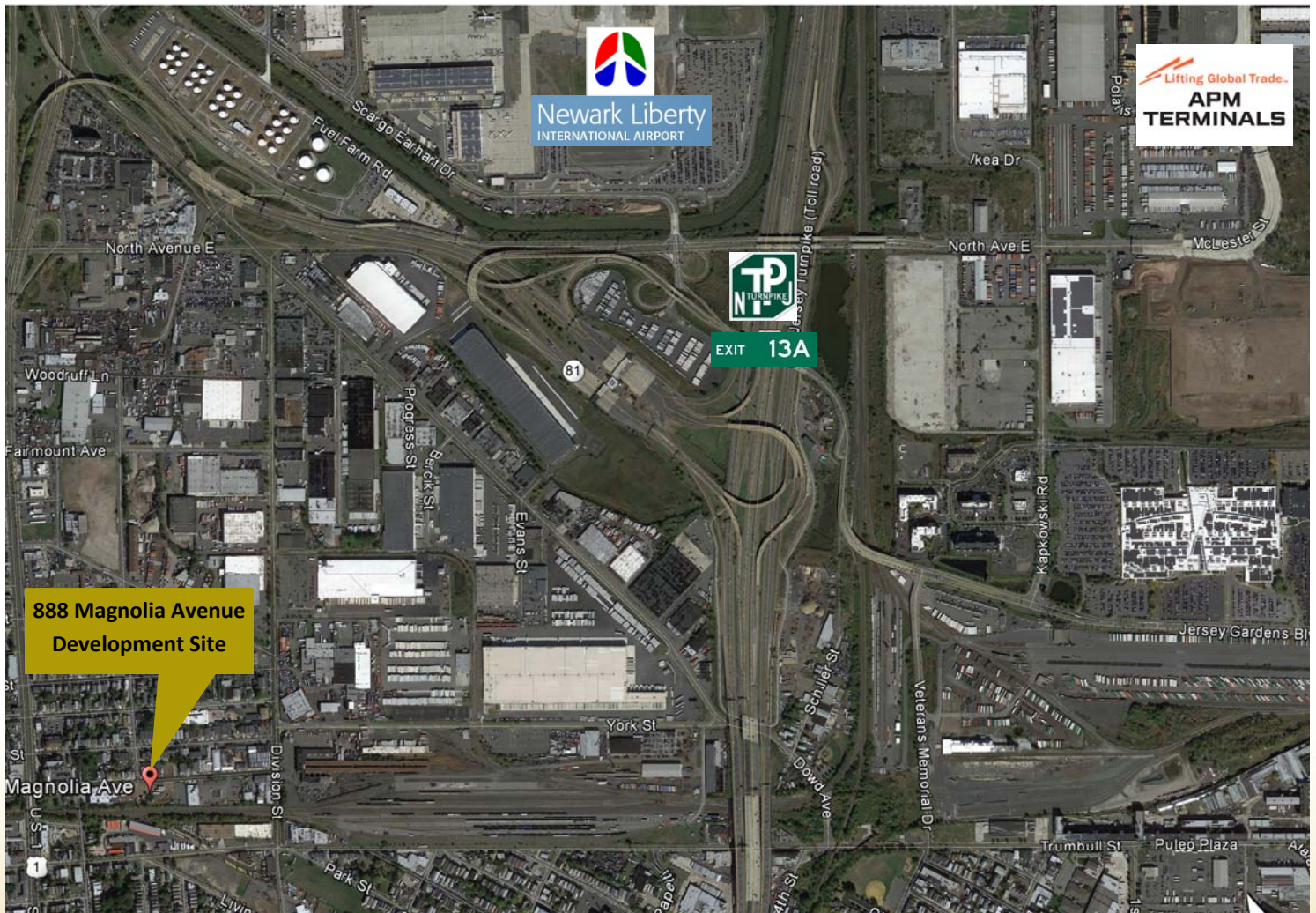


www.portviewrealty.com

888 Magnolia Avenue Elizabeth, NJ



Aerial Map:



For more information please contact:
Terry Armstrong | Vice President
PORTVIEW REALTY SERVICES, LLC
(o) 908.272.7555 (c) 201.446.3613
terry@portviewrealty.com
Licensed Real Estate Broker

www.portviewrealty.com