



**FOR LEASE**

**OFFICE PLACE**

**24200 Chagrin Boulevard  
Beachwood, Ohio 44122**



**CONNOR REDMAN**

Sales Associate

216.525.1493

[credman@crescorealestate.com](mailto:credman@crescorealestate.com)

**ELIOT KIJEWski, SIOR**

Senior Vice President

216.525.1487

[ekijewski@crescorealestate.com](mailto:ekijewski@crescorealestate.com)

*Independently Owned and Operated / A Member of the Cushman & Wakefield Alliance*

Cushman & Wakefield Copyright 2015. No warranty or representation, express or implied, is made to the accuracy or completeness of the information contained herein, and same is submitted subject to errors, omissions, change of price, rental or other conditions, withdrawal without notice, and to any special listing conditions imposed by the property owner(s). As applicable, we make no representation as to the condition of the property (or properties) in question.

3 Summit Park Drive, Suite 200  
Cleveland, Ohio 44131  
Main 216.520.1200 • Fax 216.520.1828  
[crescorealestate.com](http://crescorealestate.com)



### Property Highlights

- 4,913 SF available for lease
- Open floor plan, 3 offices, conference room, reception/waiting room, kitchenette and large bullpen
- Ample parking with 11 reserved guest parking spots
- Close proximity to I-271 and all of the Chagrin Corridor amenities
- For lease at \$16.50/SF Gross
- Close proximity to Giant Eagle, Benihana, Brueggers Bagels, City Barbeque and more



**CONNOR REDMAN**

Sales Associate

216.525.1493

[credman@crescorealestate.com](mailto:credman@crescorealestate.com)

**ELIOT KIJEWski, SIOR**

Senior Vice President

216.525.1487

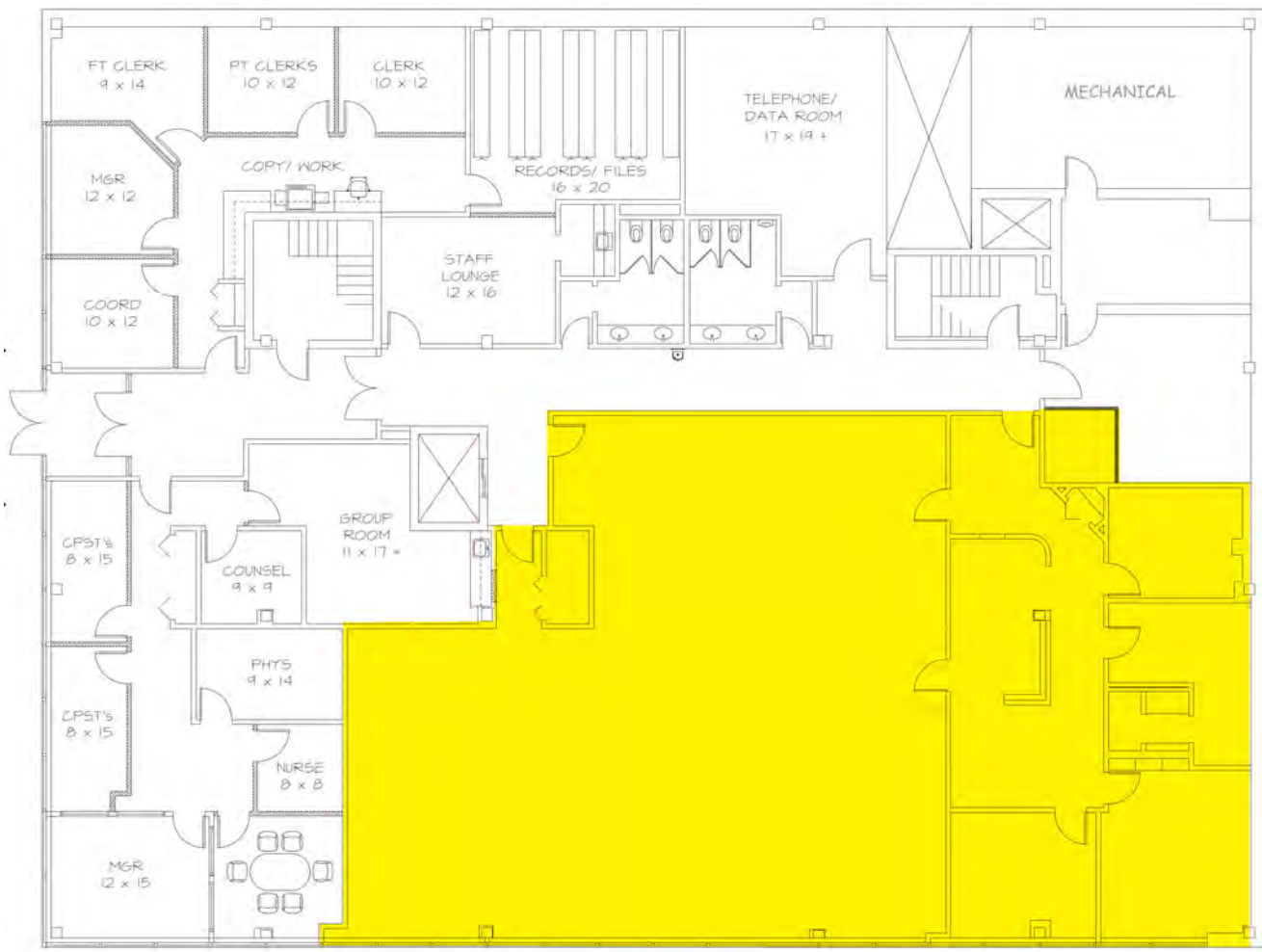
[ekijewski@crescorealestate.com](mailto:ekijewski@crescorealestate.com)

*Independently Owned and Operated / A Member of the Cushman & Wakefield Alliance*

Cushman & Wakefield Copyright 2015. No warranty or representation, express or implied, is made to the accuracy or completeness of the information contained herein, and same is submitted subject to errors, omissions, change of price, rental or other conditions, withdrawal without notice, and to any special listing conditions imposed by the property owner(s). As applicable, we make no representation as to the condition of the property (or properties) in question.

3 Summit Park Drive, Suite 200  
Cleveland, Ohio 44131  
Main 216.520.1200 • Fax 216.520.1828  
[crescorealestate.com](http://crescorealestate.com)

**Floorplan - Suite 60 - 4913 SF**



**CONNOR REDMAN**  
Sales Associate  
216.525.1493  
credman@crescorealestate.com

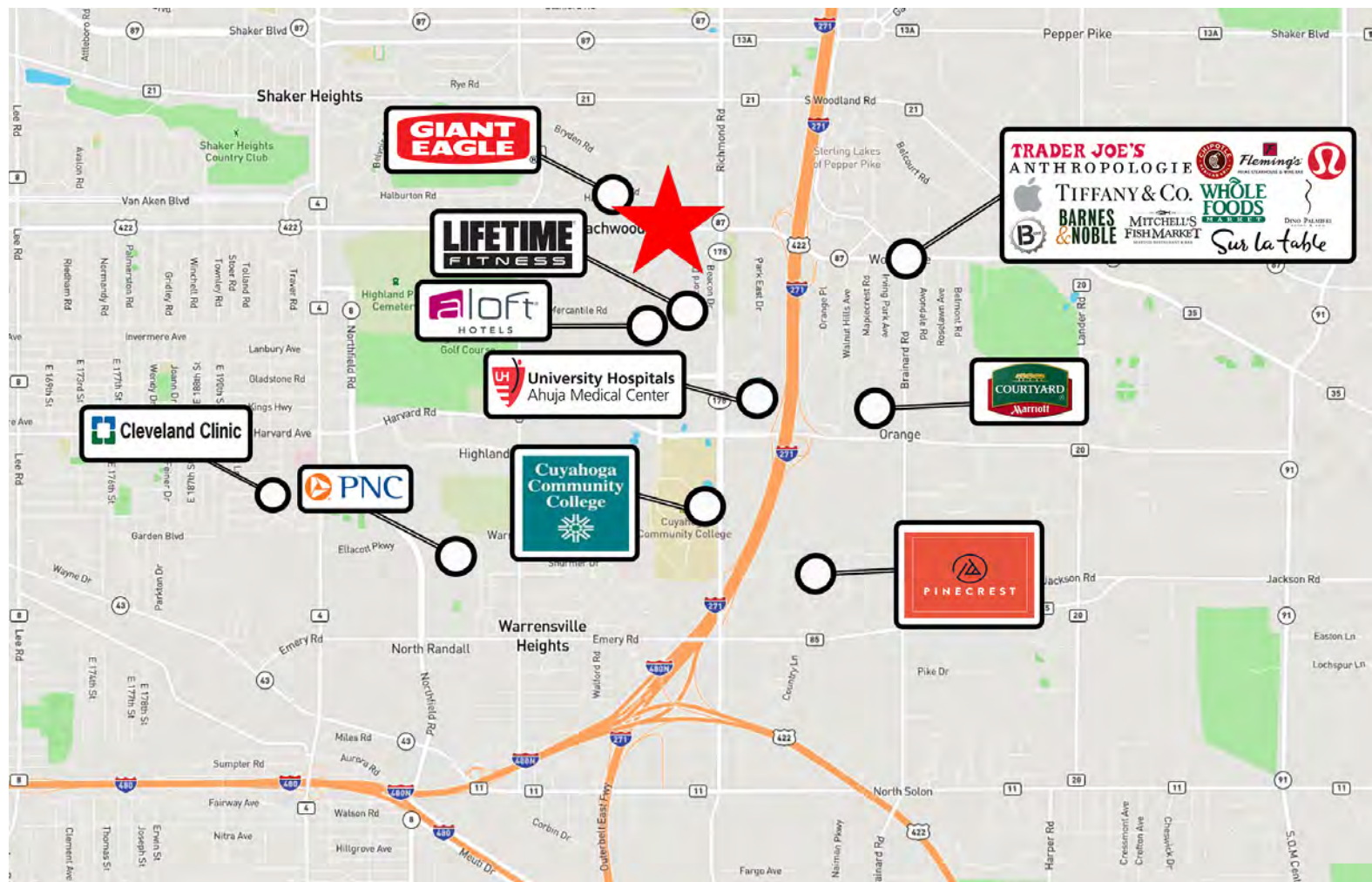
**ELIOT KIJEWski, SIOR**  
Senior Vice President  
216.525.1487  
ekijewski@crescorealestate.com

*Independently Owned and Operated / A Member of the Cushman & Wakefield Alliance*

Cushman & Wakefield Copyright 2015. No warranty or representation, express or implied, is made to the accuracy or completeness of the information contained herein, and same is submitted subject to errors, omissions, change of price, rental or other conditions, withdrawal without notice, and to any special listing conditions imposed by the property owner(s). As applicable, we make no representation as to the condition of the property (or properties) in question.

3 Summit Park Drive, Suite 200  
Cleveland, Ohio 44131  
Main 216.520.1200 • Fax 216.520.1828  
**crescorealestate.com**

**Location Map**



**CONNOR REDMAN**  
Sales Associate  
216.525.1493  
credman@crescorealestate.com

**ELIOT KIJEWski, SIOB**  
Senior Vice President  
216.525.1487  
ekijewski@crescorealestate.com

3 Summit Park Drive, Suite 200  
Cleveland, Ohio 44131  
Main 216.520.1200 • Fax 216.520.1828  
**crescorealestate.com**

*Independently Owned and Operated / A Member of the Cushman & Wakefield Alliance*  
Cushman & Wakefield Copyright 2015. No warranty or representation, express or implied, is made to the accuracy or completeness of the information contained herein, and same is submitted subject to errors, omissions, change of price, rental or other conditions, withdrawal without notice, and to any special listing conditions imposed by the property owner(s). As applicable, we make no representation as to the condition of the property (or properties) in question.