

For Lease

Manufacturing or Distribution Space



TTF East Park Building 4620 B Street NW, Auburn



Features

Approximately 14,490 SF including 2,016 SF office

2 dock-high doors, 7 pony-docks, 1 drive-in door

22' clear height / 20+ parking stalls

Heavy power, heated & insulated shell, high intensity lighting,
ideal for manufacturing uses or distribution

\$0.55 PSF shell / \$0.85 PSF office, NNN

Available February 1, 2017

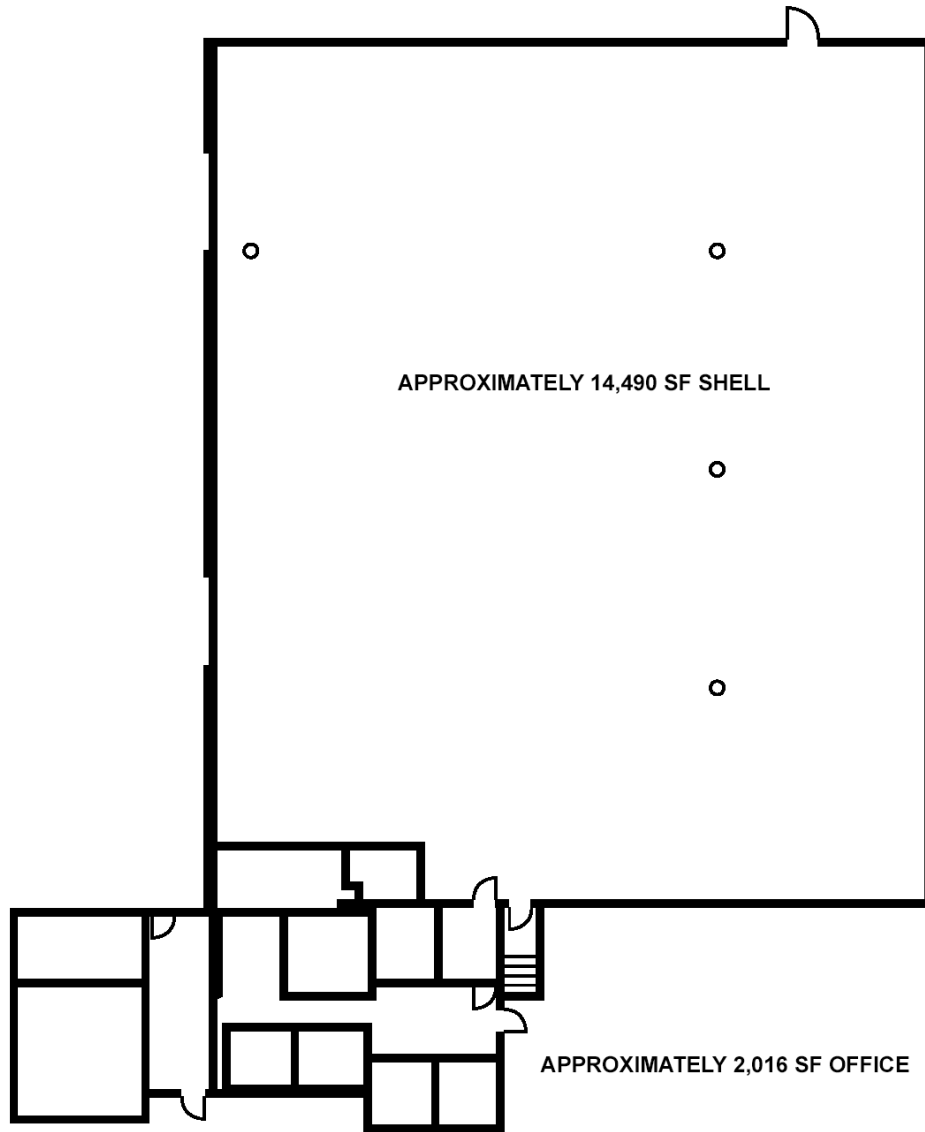
Contact

Doug Klein, SIOR

206.248.7348

dklein@kiddermathews.com

TTF East Park Building



Contact

Doug Klein, SIOR
206.248.7348
dklein@kiddermathews.com
