

Commercial Land  
For Sale

9.60 Acres MOL

Sales Price: \$1,637,846



**1408 E. Main Street**  
Norman, Oklahoma 73071

## PROPERTY HIGHLIGHTS

- All Utilities Available to Site
- Access from Wal-Mart Supercenter
- Ideal for Senior Housing or Multi-Family
- Close Proximity to University of Oklahoma Campus
- Frontage: 250' on Main Street
- Dimensions: 470' x 930'

LAND IN ACRES **9.60 MOL**

ZONING **A-2**

[www.naisullivangroup.com](http://www.naisullivangroup.com)

**Amir Shams / Zac McQueen**

Amir's Cell: 1 405 313 0333

Zac's Cell: 1 405 476 9199

amir@naisullivangroup.com

zac@naisullivangroup.com

4045 N.W. 64th Street, Suite 340

Oklahoma City, Oklahoma 73116

Office: 1 405 840 0600

Fax: 1 405 840 0610

NO WARRANTY OR REPRESENTATION, EXPRESS OR IMPLIED, IS MADE AS TO THE ACCURACY OF THE INFORMATION CONTAINED HEREIN, AND THE SAME IS SUBMITTED SUBJECT TO ERRORS, OMISSIONS, CHANGE OF PRICE, RENTAL OR OTHER CONDITIONS, PRIOR SALE, LEASE OR FINANCING, OR WITHDRAWAL WITHOUT NOTICE, AND OF ANY SPECIAL LISTING CONDITIONS IMPOSED BY OUR PRINCIPALS NO WARRANTIES OR REPRESENTATIONS ARE MADE AS TO THE CONDITION OF THE PROPERTY OR ANY HAZARDS CONTAINED THEREIN ARE ANY TO BE IMPLIED.

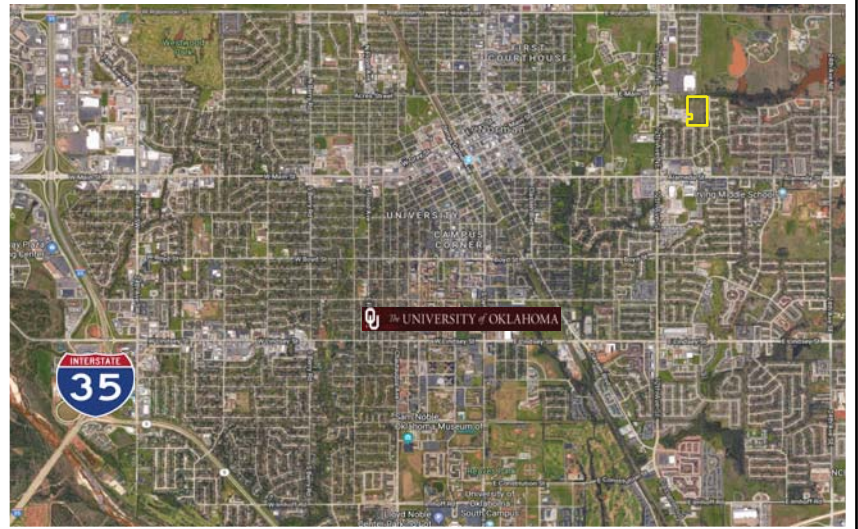


1408 E. Main Street  
Norman, OK 73071



## DEMOGRAPHICS

Population		
1 Mile: 9,820	3 Mile: 69,547	5 Mile: 108,018
Average Household Income		
1 Mile: \$47,159	3 Mile: \$46,174	5 Mile: \$52,666
Total Households		
1 Mile: 4,095	3 Mile: 27,377	5 Mile: 44,044



**Amir Shams / Zac McQueen**

Amir's Cell: 1 405 313 0333

Zac's Cell: 1 405 476 9199

amir@naisullivangroup.com

zac@naisullivangroup.com

[www.naisullivangroup.com](http://www.naisullivangroup.com)

**NAI Sullivan Group**

4045 N.W. 64th Street, Suite 340

Oklahoma City, Oklahoma 73116

Office: 1 405 840 0600

Fax: 1 405 840 0610