



LLOYD
COMPANIES

2707 S Carolyn Ave, Suite 2

Office / Call Center Space Available



2707 S Carolyn Ave, Ste 2
Sioux Falls, SD 57106

FOR LEASE

16,963 SF
\$9.00 / SF NNN

SIZE

■ 16,963 SF

PRICE

■ \$9.00 / SF NNN
■ Estimated NNN: \$2.43 / SF

LOCATION

■ Office / call center space is located on the highly desirable Louise Avenue corridor with easy access to I-229

DESCRIPTION

■ Located near Agan Drywall, Sturdevant's, I-29 Brick, Tile & Stone Company, Home Depot, and Menards
■ Floor plan includes large open areas suitable for cubicles, training rooms and large loft storage areas; very flexible space

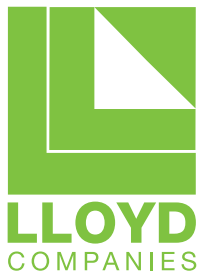
■ Now Available
■ Property is also available for sale
■ Contact Broker to schedule showing

Find out more at Lloydcompanies.com

SCOTT BLOUNT

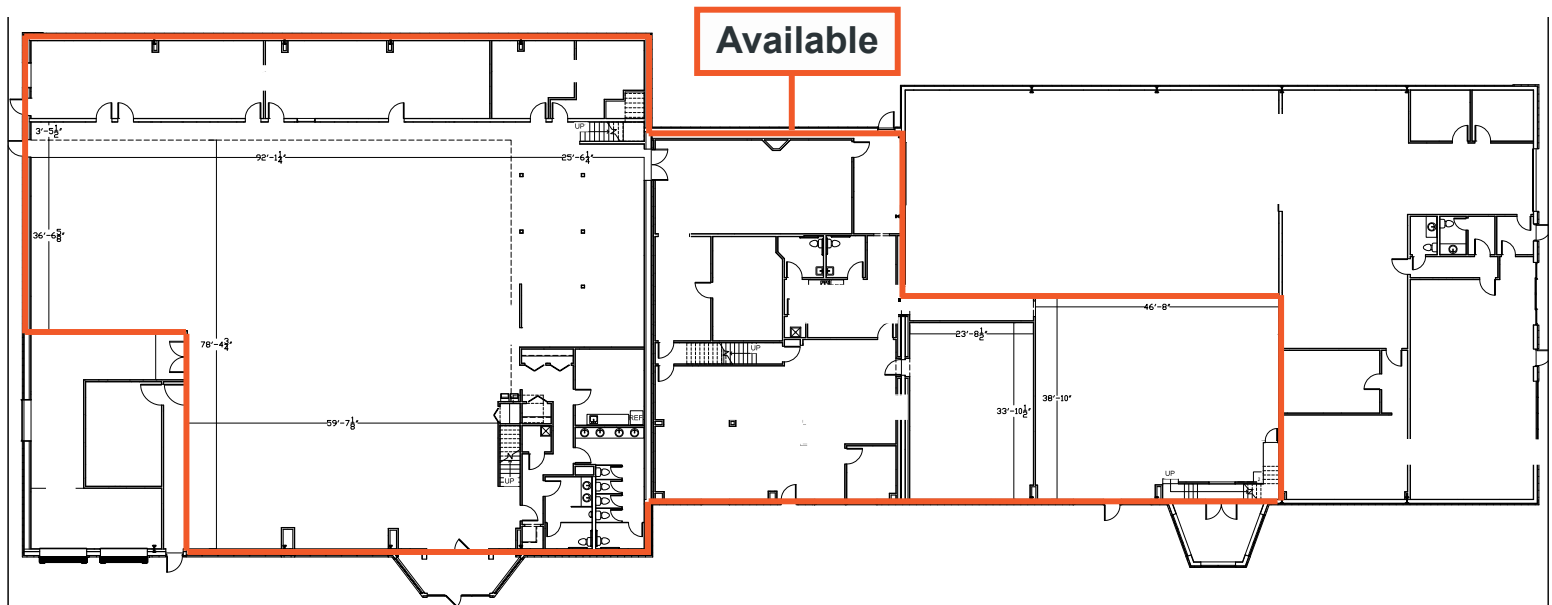
605 231-1882

scott@lloydcompanies.com



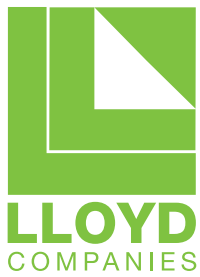
2707 S Carolyn Ave, Suite 2

Office / Call Center Space Available



Concept plan only;
Subject to change

SCOTT BLOUNT
605 231-1882
scott@lloydcompanies.com

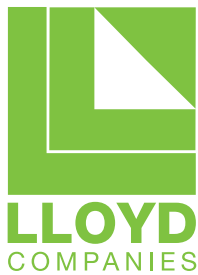


2707 S Carolyn Ave, Suite 2

Office / Call Center Space Available



SCOTT BLOUNT
605-231-1882
scott@lloydcompanies.com



2707 S Carolyn Ave, Suite 2

Office / Call Center Space Available



SCOTT BLOUNT
605-231-1882
scott@lloydcompanies.com

Area Map