

8.2 ACRES I-1 LAND AVAILABLE - CORNER LOCATION

8.2 Acres Cecil Wampler Road, Harrisonburg, VA 22801

Executive Summary



OFFERING SUMMARY

Sale Price:	\$850,000
Lot Size:	8.2 Acres
Zoning:	I-1
Utilities:	Public Water Available Public Sewer Available Natural Gas Available
MLS#:	578422



PROPERTY OVERVIEW

8.2 Acres available located next to Sysco. Located between TWO Interstate 81 interchanges, Only 1 mile from I-81 exit 240 interchange and 2 miles from I-81 exit 243 interchange. 5 acres lay great with frontage along Rt. 11 (S Valley Pike) and Cecil Wampler Road, 3 acres located in the flood plain. County 12 inch water and 10 inch sewer lines on the property, natural gas available. Located in Rockingham County - No BPOL tax.

For More Information:

Ken Kline
540.476.0411
ken.kline@cottonwood.com

8.2 ACRES I-1 LAND AVAILABLE - CORNER LOCATION

8.2 Acres Cecil Wampler Road, Harrisonburg, VA 22801

GIS Outline



For More Information:

Ken Kline

540.476.0411

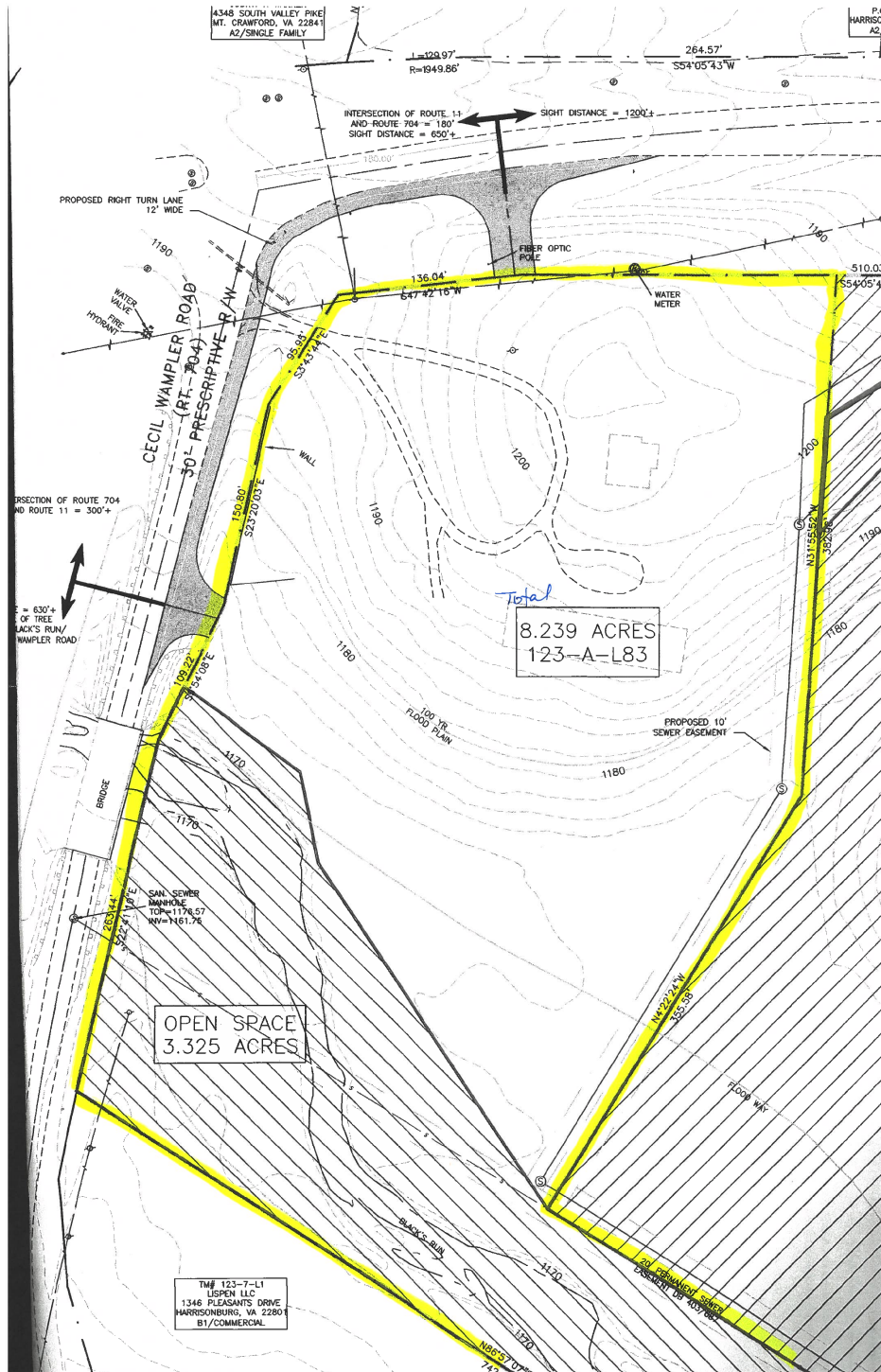
ken.kline@cottonwood.com

COTTONWOOD
COMMERCIAL
A COMMERCIAL REAL ESTATE BROKERAGE

8.2 ACRES I-1 LAND AVAILABLE - CORNER LOCATION

8.2 Acres Cecil Wampler Road, Harrisonburg, VA 22801

PLAT



For More Information:

Ken Kline

540.476.0411

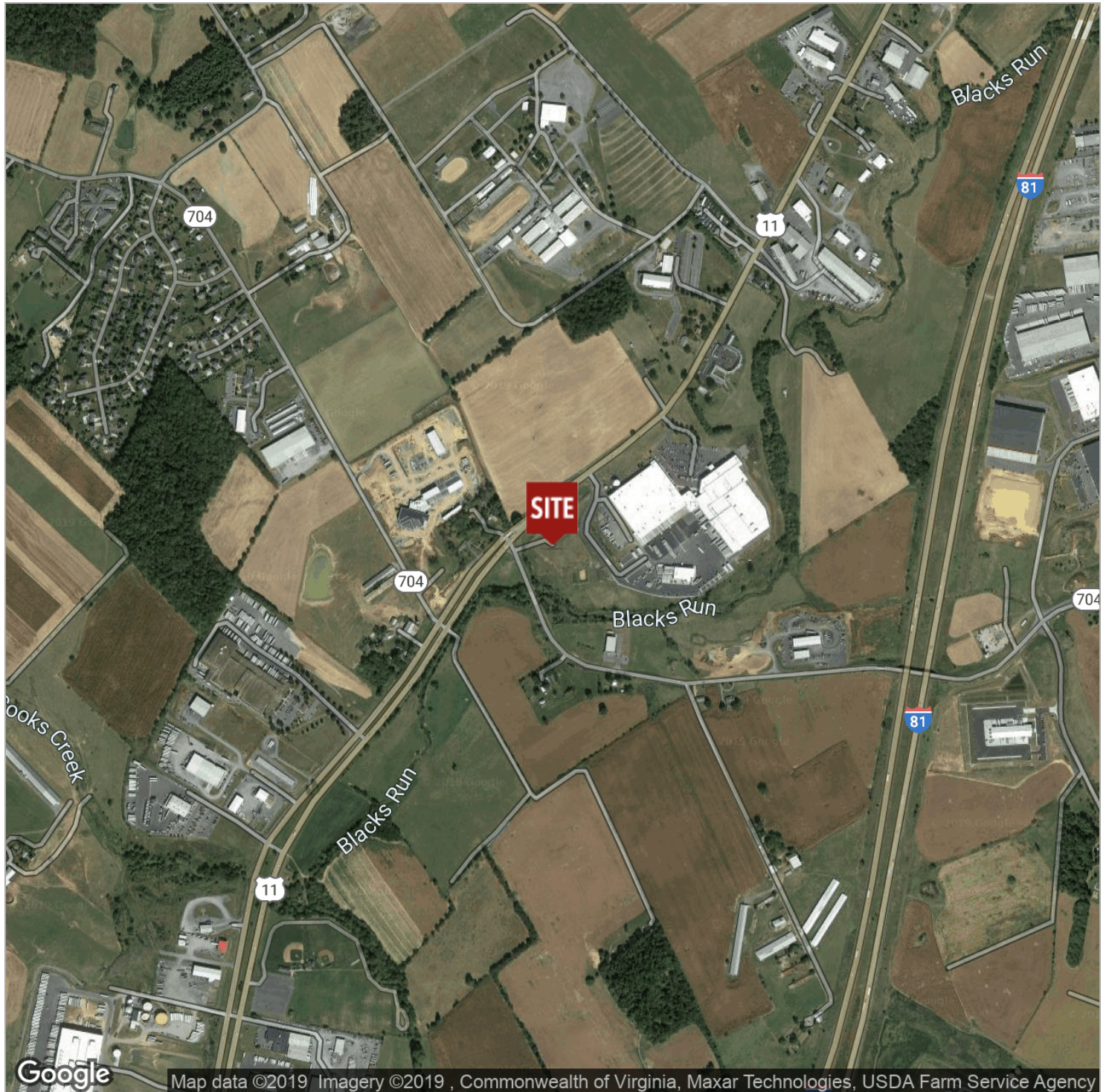
ken.kline@cottonwood.com

COTTONWOOD
COMMERCIAL
A COMMERCIAL REAL ESTATE BROKERAGE

8.2 ACRES I-1 LAND AVAILABLE - CORNER LOCATION

8.2 Acres Cecil Wampler Road, Harrisonburg, VA 22801

Location Maps



For More Information:

Ken Kline

540.476.0411

ken.kline@cottonwood.com

COTTONWOOD
COMMERCIAL
A COMMERCIAL REAL ESTATE BROKERAGE