

# For Lease or Sale

## Free Standing Close-In North Portland Office

3220 N. Williams Avenue • Portland, OR • 97212



**GRUBB & ELLIS.**  
From Insight to Results



- 4,436 SF free-standing building
- Desirable close-in NE Williams Avenue
- Excellent freeway access
- 2 blocks from Emanuel Hospital
- Within blocks of numerous restaurants and shopping in trendy Williams Avenue District
- Excellent natural light – window line on four sides of space
- Combination of private offices, conference rooms and open work environment
- 16 Parking spaces on-site free of charge
- Abundant street parking
- Ideal for medical office uses



**LEASE RATE: \$14.00/SF - NNN**

**SALE PRICE: \$750,000**

To learn more, please contact:

**Jake Lancaster**

503.972.5511

[jake.lancaster@grubb-ellis.com](mailto:jake.lancaster@grubb-ellis.com)

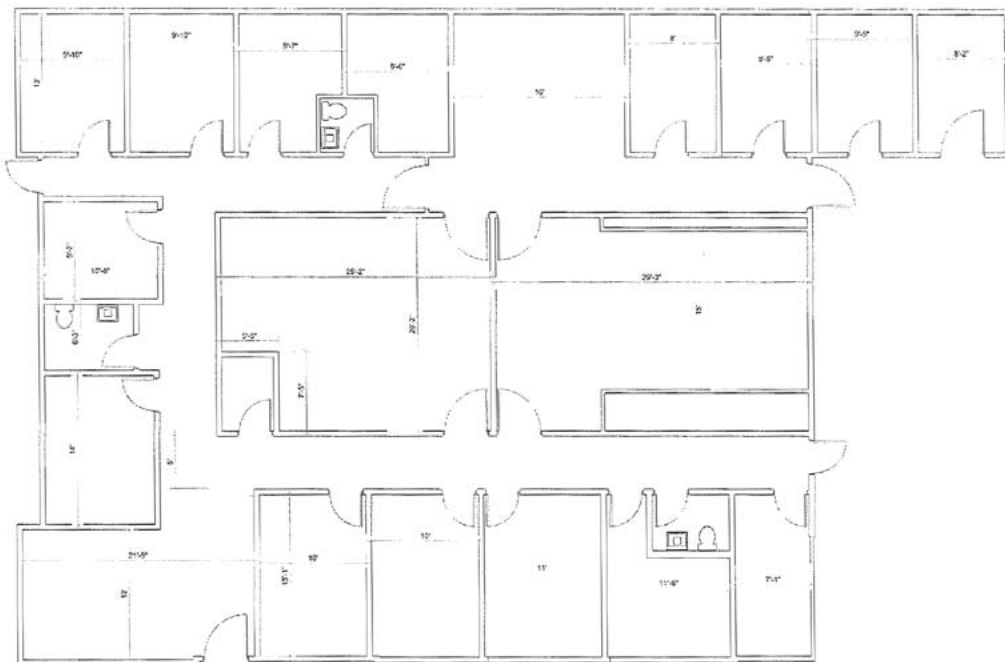
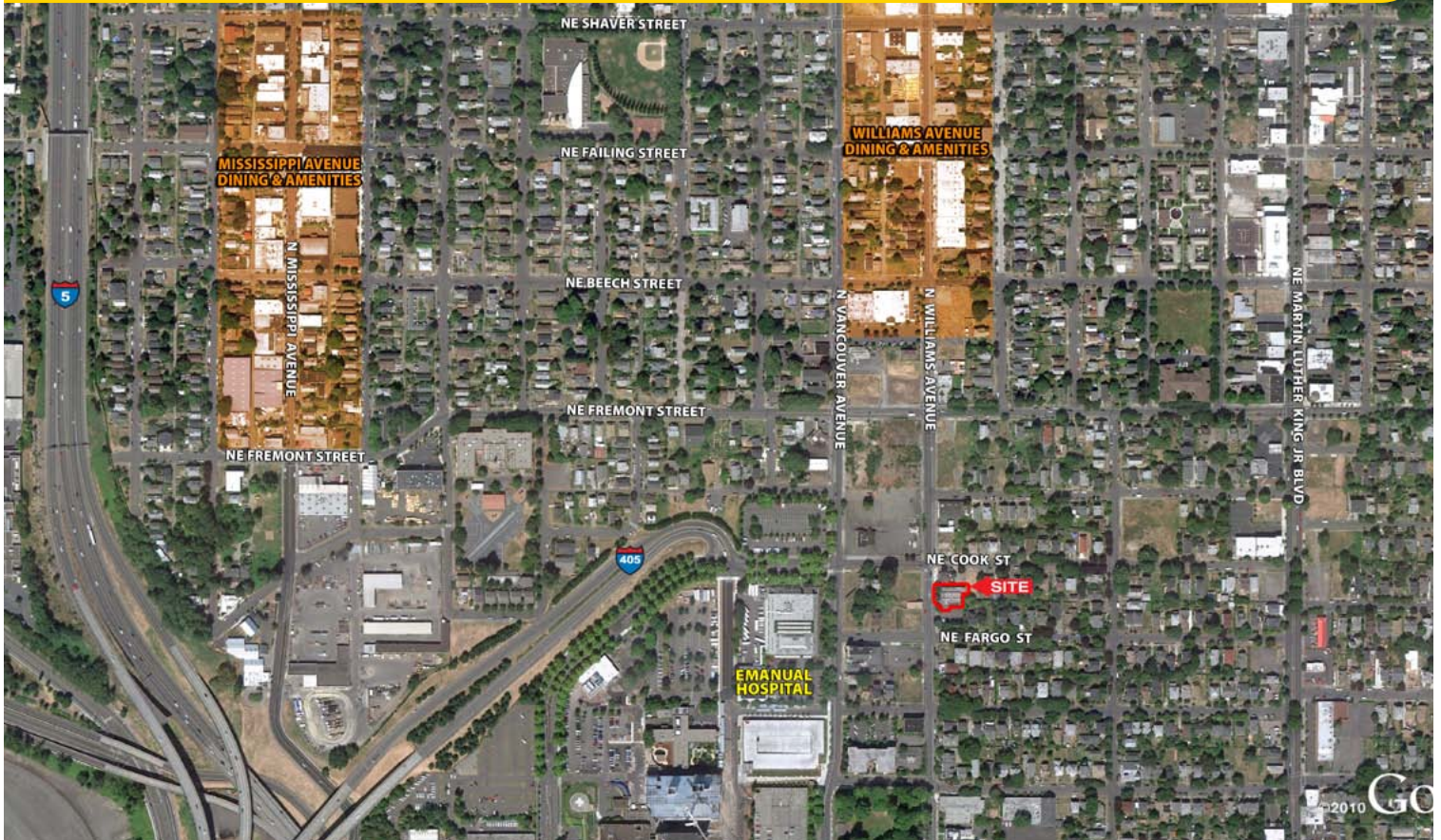
# For Lease or Sale

## Free Standing Close-In North Portland Office

3220 N. Williams Avenue • Portland, OR • 97212



**GRUBB & ELLIS.**  
From Insight to Results



### Mississippi Avenue Dining & Amenities

- Mississippi Pizza
- Amnesia Brewing
- Cup and Saucer
- Lorenzo's
- Gravy
- Prost!
- Laughing Planet
- Por Que No?
- 

### Williams Avenue Dining & Amenities

- Lincoln
- Tasty & Sons
- Pizza A Go Go
- Eat Oyster Bar
- Pix Patisserie
- Fifth Quadrant

*The information contained herein was obtained from sources believed reliable; however, Grubb & Ellis Company makes no guarantees, warranties, or representations as to the completeness or accuracy thereof. The presentation of this property is submitted subject to errors, omissions, change of price or conditions prior to sale or lease, or withdrawal without notice.*



**GRUBB & ELLIS.**  
From Insight to Results