

0.59 ACRES OF LAND FOR SALE

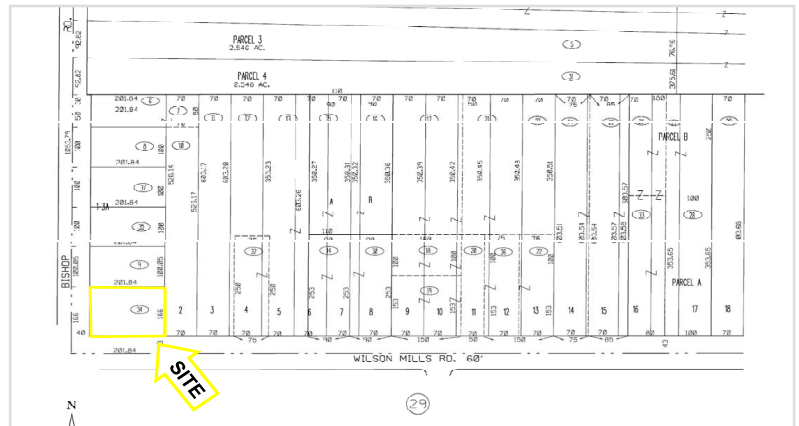


Property Highlights

- 0.59 acres available for sale
- Build to suit: up to 4,000 SF
- Site sits on the NEC of Wilson Mills Road & Bishop Road
- Traffic light 1/2 mile from Shoppes at Alpha Place (Panera Bread, Drug Mart, Qdoba, Key Bank, Tuesday Morning & Malley's Chocolates)

Demographics:

Estimated Population	Daytime Employees	Average HH Income
3 Miles: 73,486	3 Miles: 54,182	3 Miles: \$85,027
5 Miles: 192,762	5 Miles: 101,810	5 Miles: \$83,880
7 Miles: 356,684	7 Miles: 187,253	7 Miles: \$81,511



Contact Agent:

Michael J. Hirsch
 216.514.1400 x107
 mhirsch@kowitzrealstate.com

LAND FOR SALE AERIAL

0.59 Acres of Land
5591 Wilson Mills Road
Highland Heights, Ohio



KOWIT & COMPANY REAL ESTATE GROUP

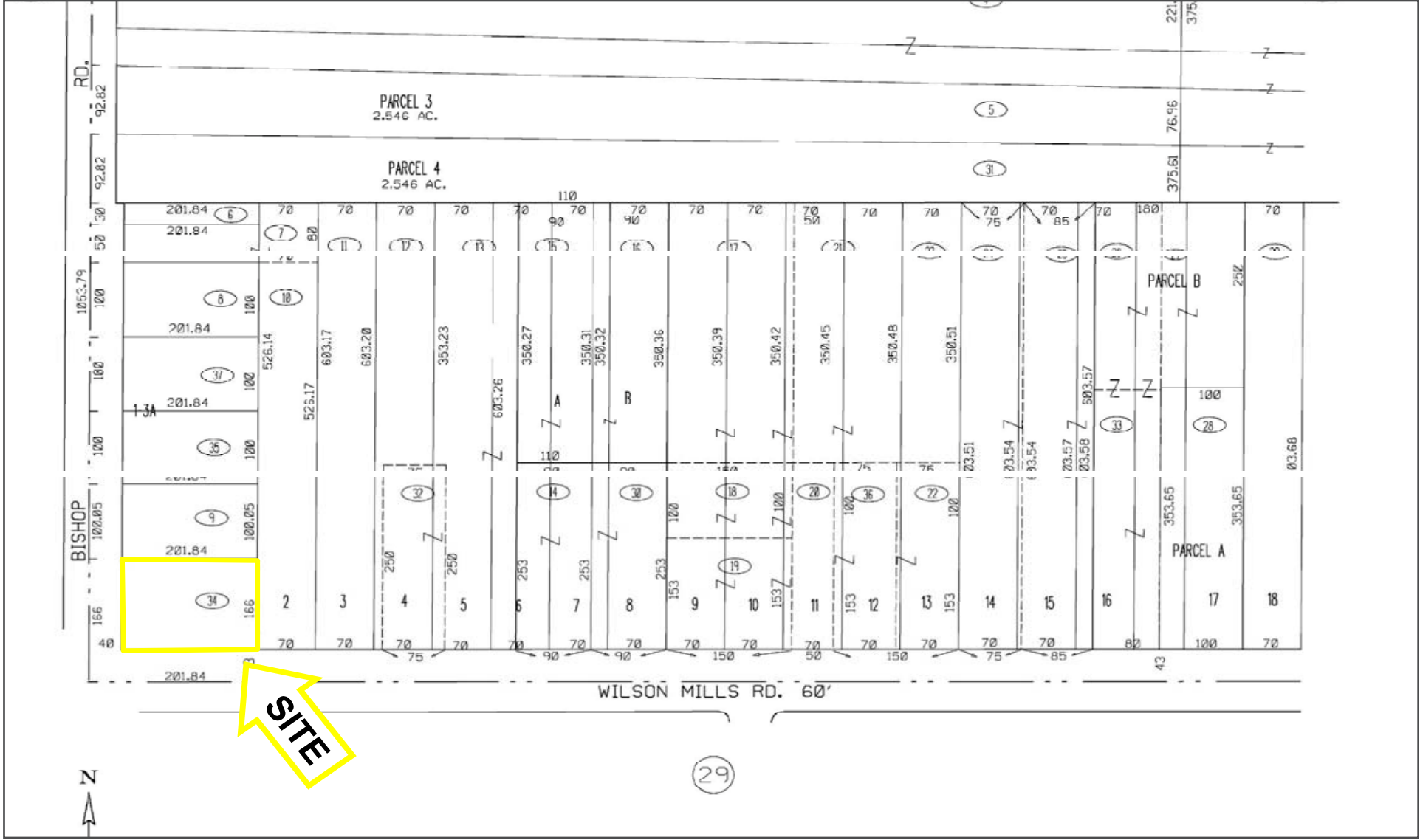
6009 Landerhaven Drive, Suite B
Mayfield Heights, Ohio 44124
P: 216.514.1400 | www.kowitrealestate.com

Contact Agent:

Michael J. Hirsch
216.514.1400 x107
mhirsch@kowitrealestate.com

LAND FOR SALE PARCEL MAP

0.59 Acres of Land
5591 Wilson Mills Road
Highland Heights, Ohio



KOWIT & COMPANY
REAL ESTATE GROUP

6009 Landerhaven Drive, Suite B
Mayfield Heights, Ohio 44124
P: 216.514.1400 | www.kowitrealestate.com

Contact Agent:

Michael J. Hirsch
216.514.1400 x107
mhirsch@kowitrealestate.com

LAND FOR SALE DEMOGRAPHICS

0.59 Acres of Land
5591 Wilson Mills Road
Highland Heights, Ohio

5591 Wilson Mills Rd Highland Heights, OH 44143		3 mi radius	5 mi radius	7 mi radius
POPULATION	2018 Estimated Population	73,486	192,762	356,684
	2023 Projected Population	70,486	185,985	351,703
	2010 Census Population	75,121	198,041	365,831
	2000 Census Population	77,234	211,849	404,357
	Projected Annual Growth 2018 to 2023	-0.8%	-0.7%	-0.3%
	Historical Annual Growth 2000 to 2018	-0.3%	-0.5%	-0.7%
	2018 Median Age	44.6	41.8	41.1
HOUSEHOLDS	2018 Estimated Households	34,230	87,183	161,435
	2023 Projected Households	33,456	85,884	162,477
	2010 Census Households	33,732	86,264	159,480
	2000 Census Households	33,882	89,891	171,509
	Projected Annual Growth 2018 to 2023	-0.5%	-0.3%	0.1%
	Historical Annual Growth 2000 to 2018	0.1%	-0.2%	-0.3%
RACE AND ETHNICITY	2018 Estimated White	72.5%	56.8%	53.7%
	2018 Estimated Black or African American	19.0%	36.5%	39.6%
	2018 Estimated Asian or Pacific Islander	5.9%	3.9%	3.9%
	2018 Estimated American Indian or Native Alaskan	0.1%	0.1%	0.1%
	2018 Estimated Other Races	2.4%	2.6%	2.6%
	2018 Estimated Hispanic	2.2%	2.1%	2.1%
INCOME	2018 Estimated Average Household Income	\$85,027	\$83,880	\$81,511
	2018 Estimated Median Household Income	\$65,466	\$63,258	\$60,782
	2018 Estimated Per Capita Income	\$39,761	\$38,106	\$37,087
EDUCATION (AGE 25+)	2018 Estimated Elementary (Grade Level 0 to 8)	2.3%	2.0%	2.0%
	2018 Estimated Some High School (Grade Level 9 to 11)	3.7%	5.0%	5.9%
	2018 Estimated High School Graduate	23.6%	24.1%	24.6%
	2018 Estimated Some College	20.4%	22.0%	21.7%
	2018 Estimated Associates Degree Only	6.2%	7.2%	7.6%
	2018 Estimated Bachelors Degree Only	24.7%	21.5%	20.1%
	2018 Estimated Graduate Degree	19.1%	18.2%	18.0%
BUSINESS	2018 Estimated Total Businesses	3,663	7,623	14,586
	2018 Estimated Total Employees	54,182	101,810	187,253
	2018 Estimated Employee Population per Business	14.8	13.4	12.8
	2018 Estimated Residential Population per Business	20.1	25.3	24.5



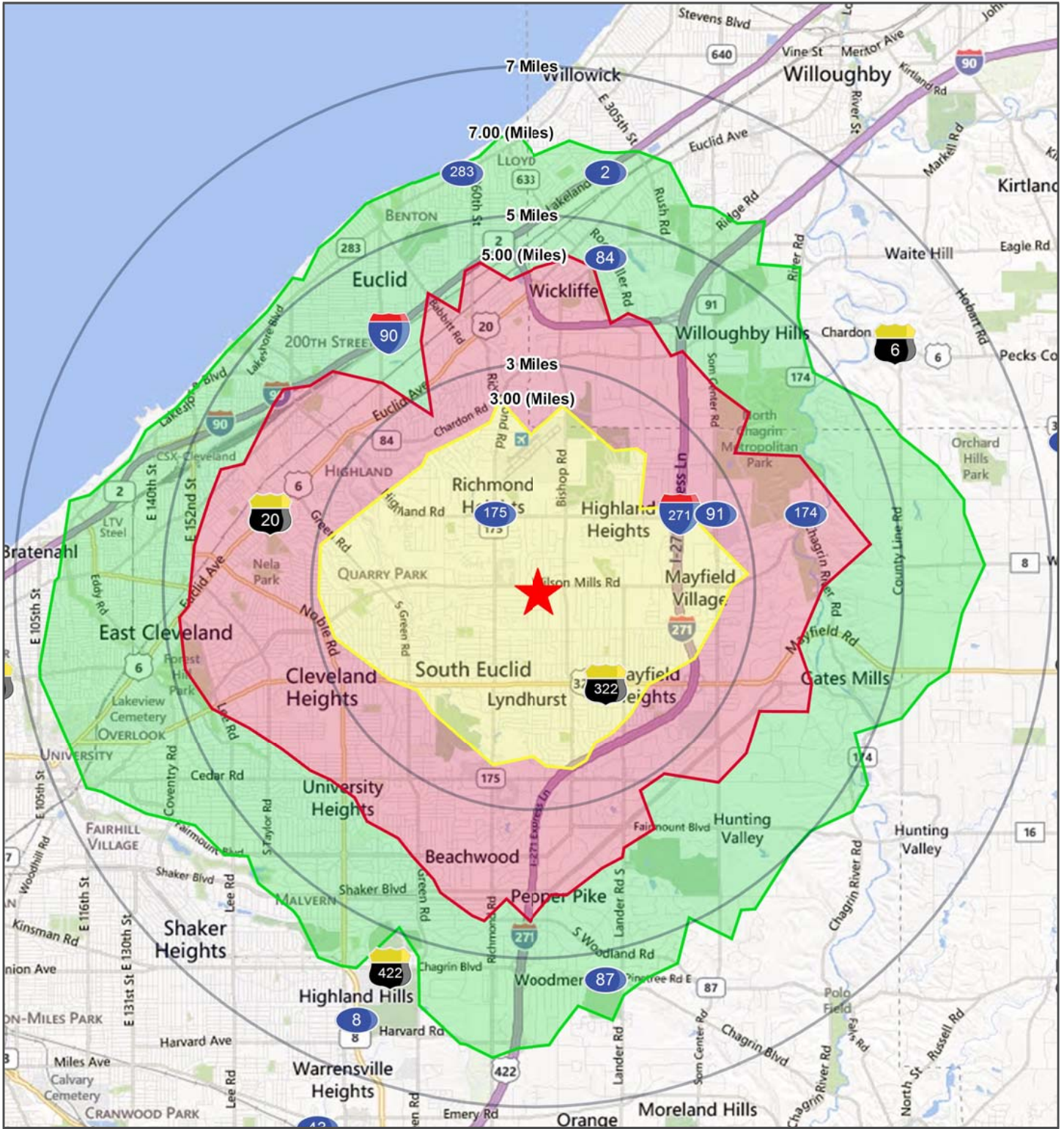
6009 Landerhaven Drive, Suite B
Mayfield Heights, Ohio 44124
P: 216.514.1400 | www.kowitrealestate.com

Contact Agent:

Michael J. Hirsch
216.514.1400 x107
mhirsch@kowitrealestate.com

LAND FOR SALE AREA MAP

0.59 Acres of Land
5591 Wilson Mills Road
Highland Heights, Ohio



KOWIT & COMPANY
REAL ESTATE GROUP

6009 Landerhaven Drive, Suite B
Mayfield Heights, Ohio 44124
P: 216.514.1400 | www.kowitrealestate.com

Contact Agent:

Michael J. Hirsch
216.514.1400 x107
mhirsch@kowitrealestate.com