

2236 SOUTH 3270 WEST

WEST VALLEY CITY, UTAH 84119

FOR LEASE

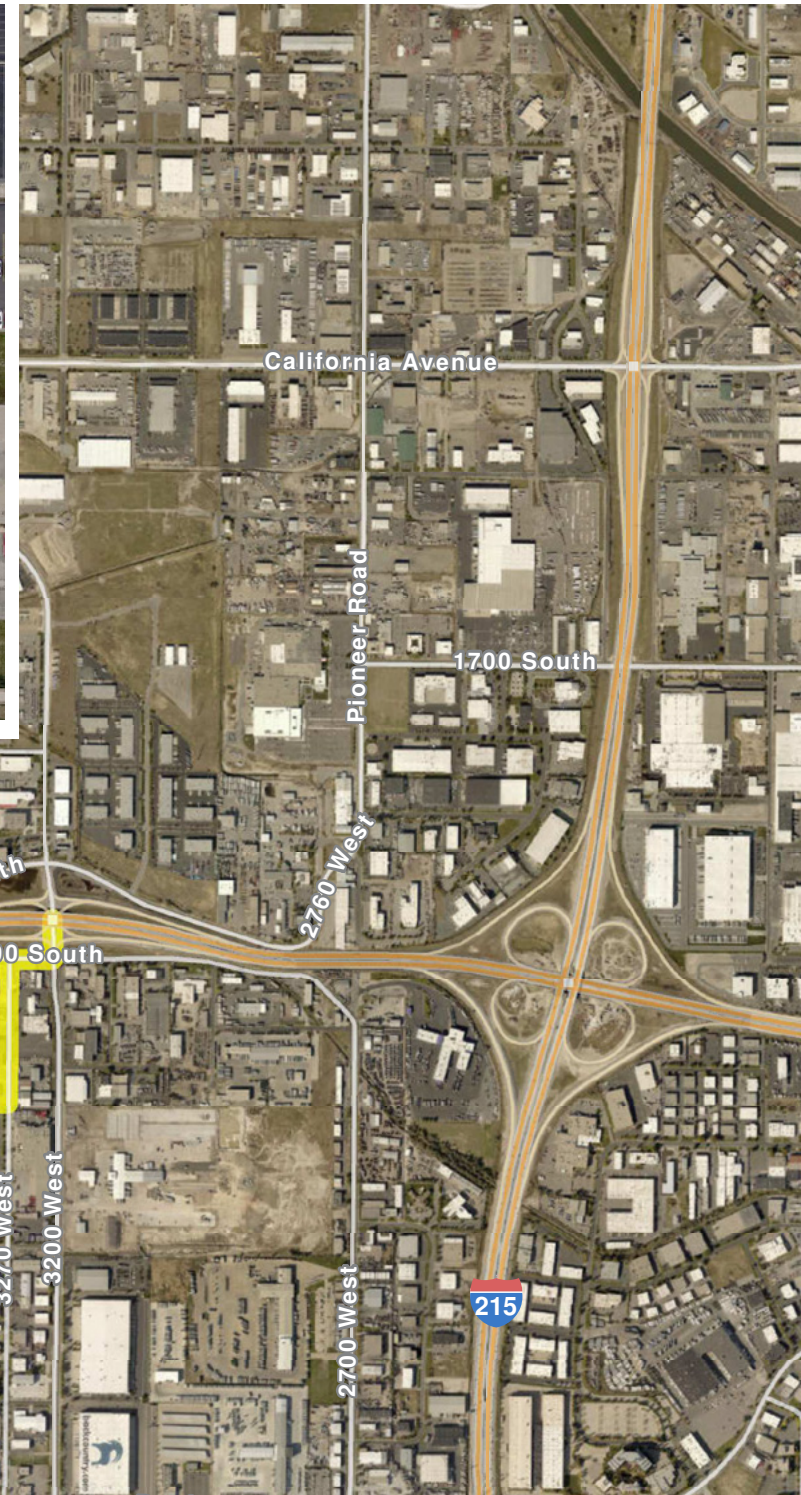
12,576 SF

2236 SOUTH 3270 WEST

WEST VALLEY CITY, UTAH 84119

FOR LEASE

12,576 SF



PROPERTY HIGHLIGHTS

- Fire Sprinklers
- Possible Yard
- Brick Construction
- 0.4 Miles from SR-201 and 1.5 Miles from I-215

BUILDING 1

- 5,747 SF Total
- 907 SF Office
- 17' Clear Height
- Power: 225 Amps
- Loading: Two (2) Ground Level Doors (14'x14')

BUILDING 2

- 6,829 SF Total
- 1,262 SF Office
- 15' Clear Height
- Power: 800 Amps
- Loading: Two (2) Oversized Ground Level Doors (18'x14')

ELI PRIEST

801.746.4746

eli.priest@ngkf.com

376 East 400 South, Suite 120 | Salt Lake City, Utah 84111
801.578.5555 | www.ngacres.com

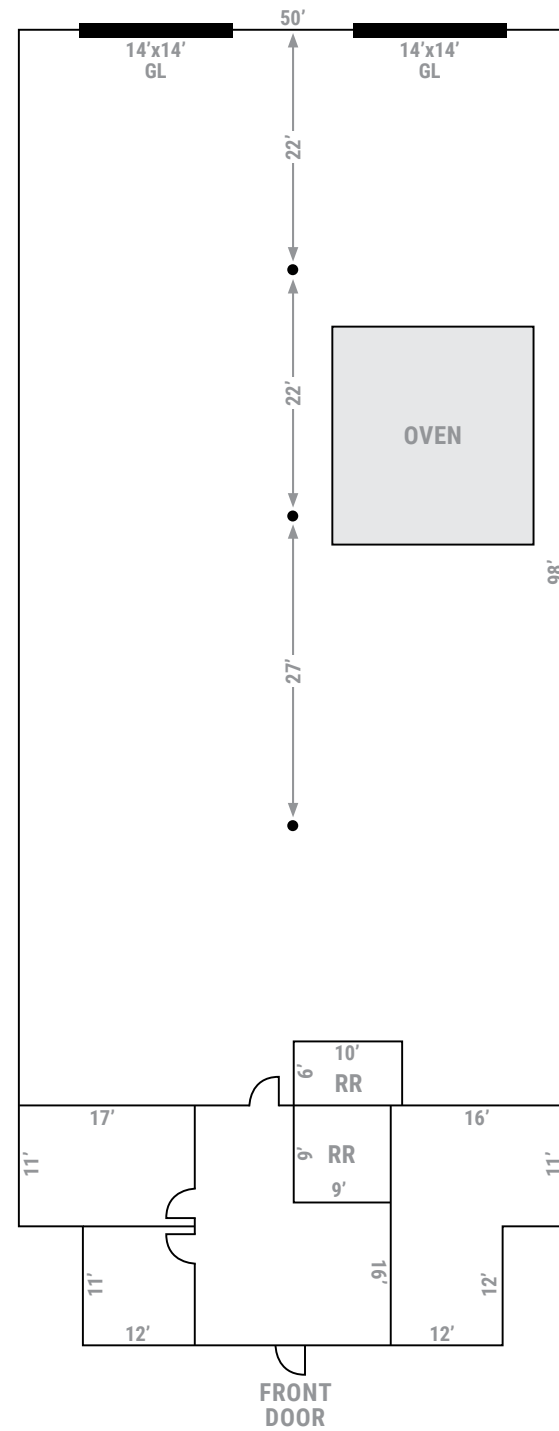


This document has been prepared by Newmark Knight Frank for advertising and general information purposes only. While the information contained herein has been obtained from what are believed to be reliable sources, the same has not been verified for accuracy or completeness. Newmark Knight Frank accepts no responsibility or liability for the information contained in this document. Any interested party should conduct an independent investigation to verify the information contained herein.



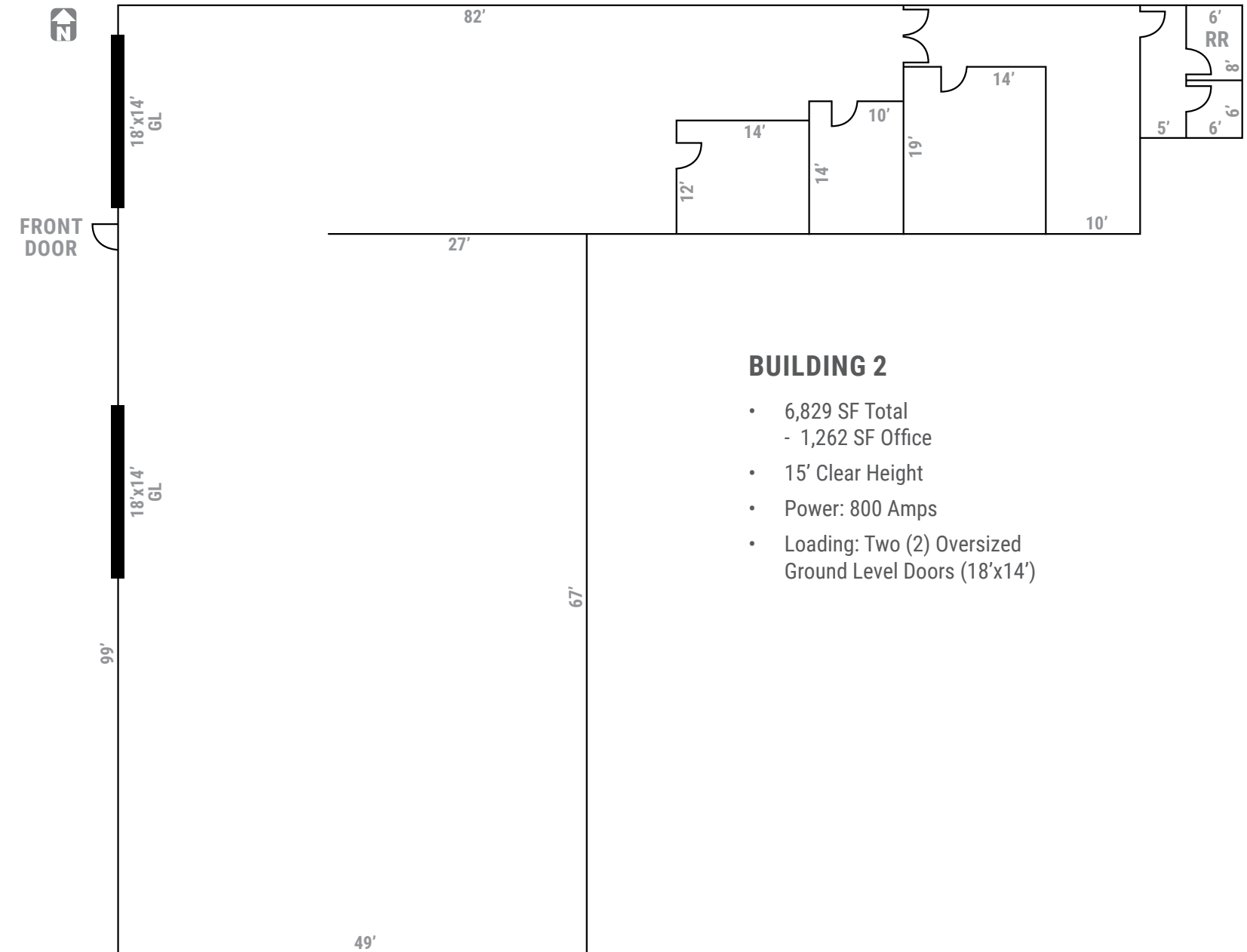
376 East 400 South, Suite 120 | Salt Lake City, Utah 84111
801.578.5555 | www.ngacres.com

This document has been prepared by Newmark Knight Frank for advertising and general information purposes only. While the information contained herein has been obtained from what are believed to be reliable sources, the same has not been verified for accuracy or completeness. Newmark Knight Frank accepts no responsibility or liability for the information contained in this document. Any interested party should conduct an independent investigation to verify the information contained herein.



BUILDING 1

- 5,747 SF Total
- 907 SF Office
- 17' Clear Height
- Power: 225 Amps
- Loading: Two (2) Ground Level Doors (14'x14')



BUILDING 2

- 6,829 SF Total
- 1,262 SF Office
- 15' Clear Height
- Power: 800 Amps
- Loading: Two (2) Oversized Ground Level Doors (18'x14')