



# Columbia Sussex

740 CENTRE VIEW BOULEVARD | CRESTVIEW HILLS, KY

Corporate Campus Opportunities

32 Acre Site

Highly Desired Location



## OVERVIEW

The Columbia Sussex headquarters is a stunning state-of-the-art eight-story office building located in Crestview Hills, Kentucky.

Crestview Hills boasts of beautiful homes with lakeside golf course views in aesthetically pleasing neighborhoods, wooded business sites, a four-year liberal arts college and quick, convenient access to I-275, I-75 and I-71.

Columbia Sussex is 15 minutes to downtown Cincinnati and just 10 minutes to the Greater Cincinnati/Northern Kentucky Airport (CVG).

## HIGHLIGHTS:

- Abundant parking with room for expansion on approximately 32 acres
- Beautiful lobby and main reception
- Onsite cafeteria and conference room
- Tremendous visibility from I-275
- Tenant balconies on each floor
- Stunning architectural design
- Floor to ceiling glass







## AVAILABILITY

34,886 SF Available

Asking \$23.50 psf

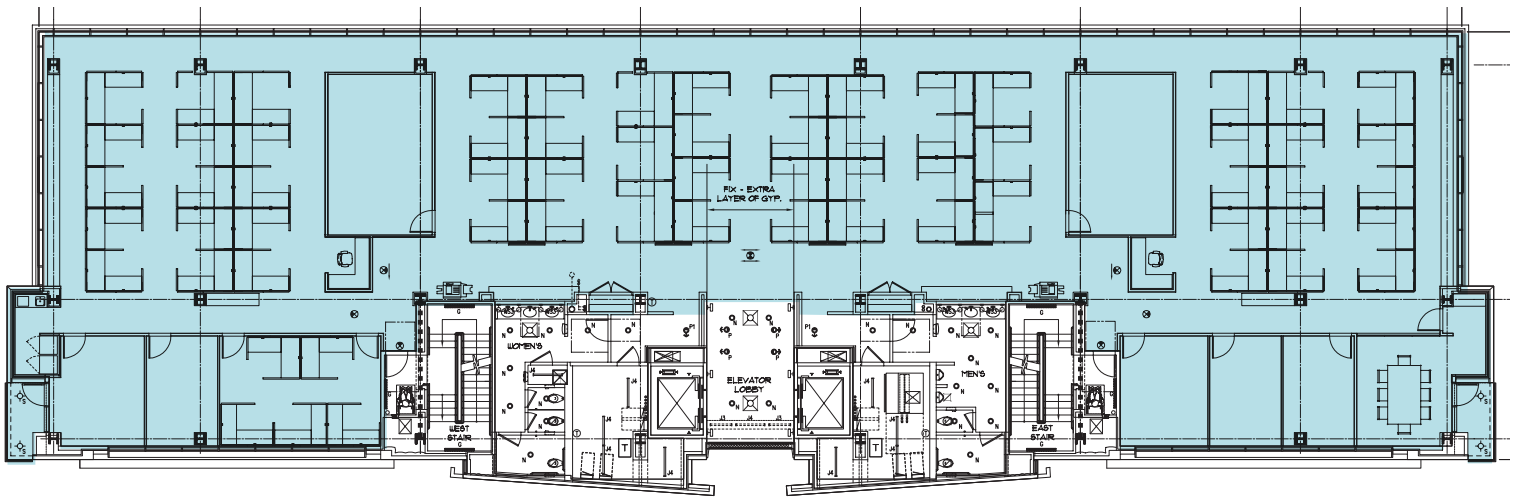
Full Service Gross

- Full Floors Available
- Full Floors Divisible to 5,000 SF
- 10,350 SF Floor Plates
- Breakthrough Valley View



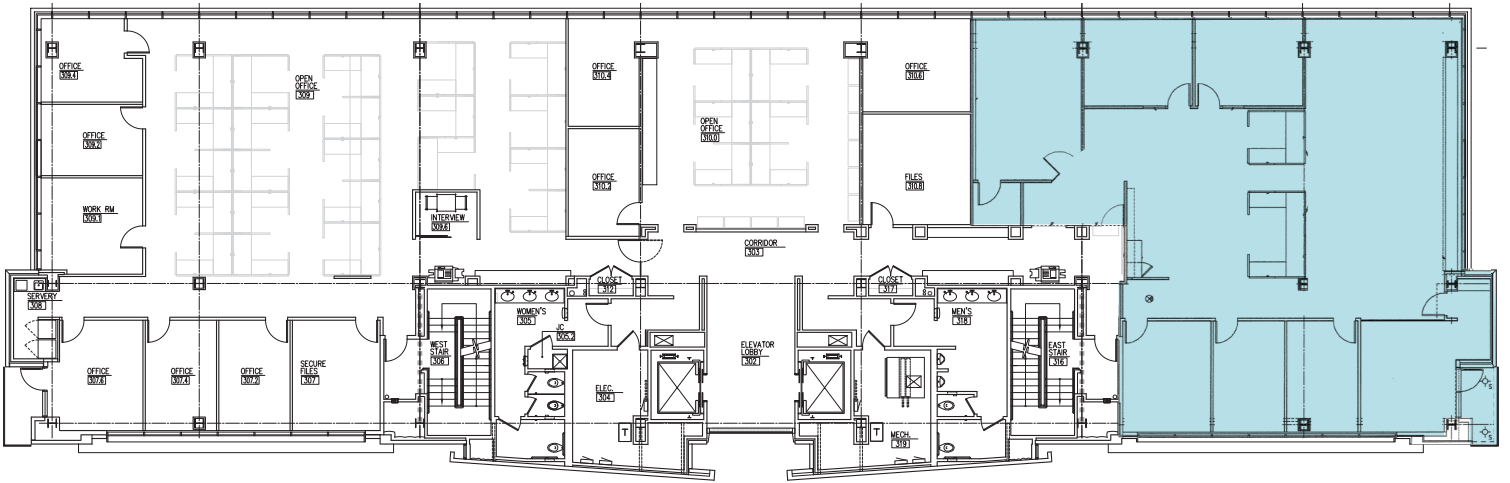
# SECOND FLOOR

10,350 SF

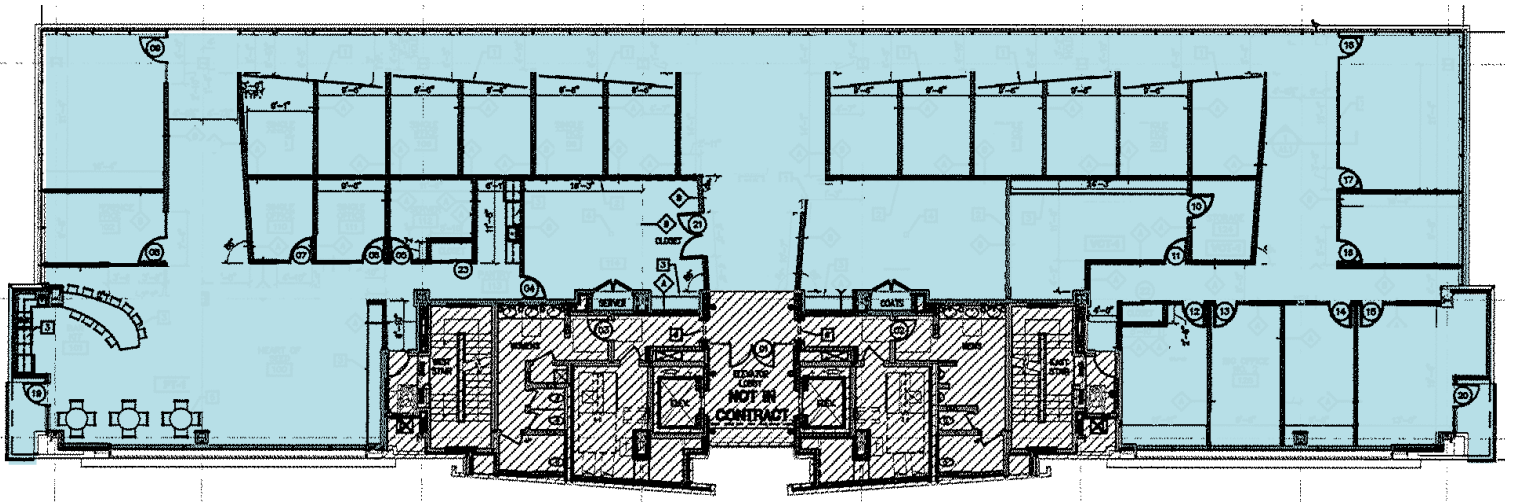


# THIRD FLOOR

3,836 SF

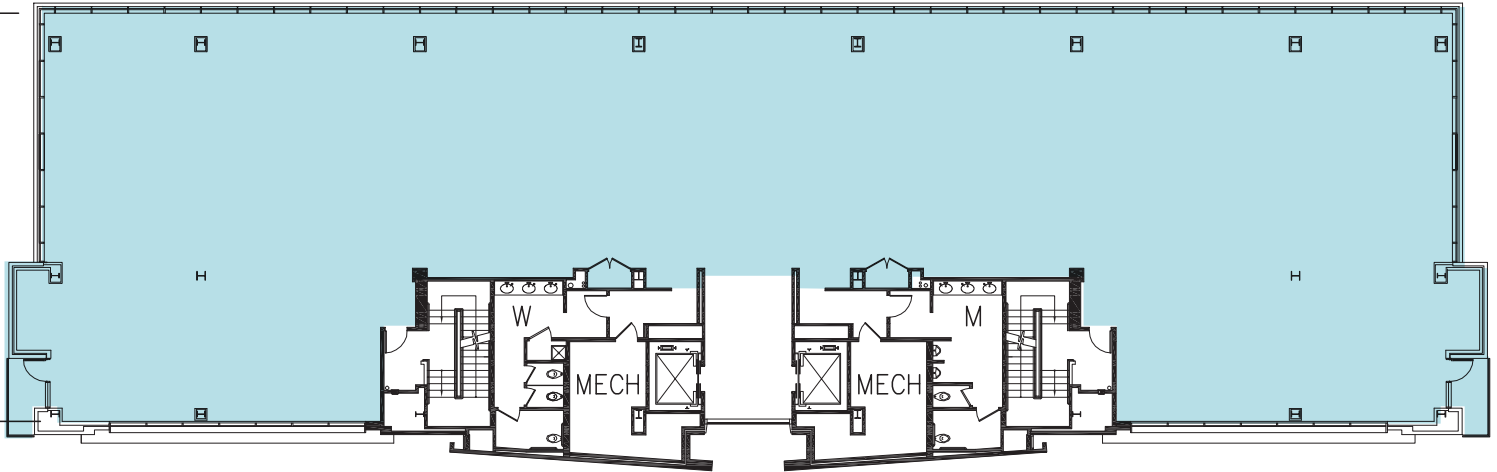


SIXTH FLOOR  
10,350 SF



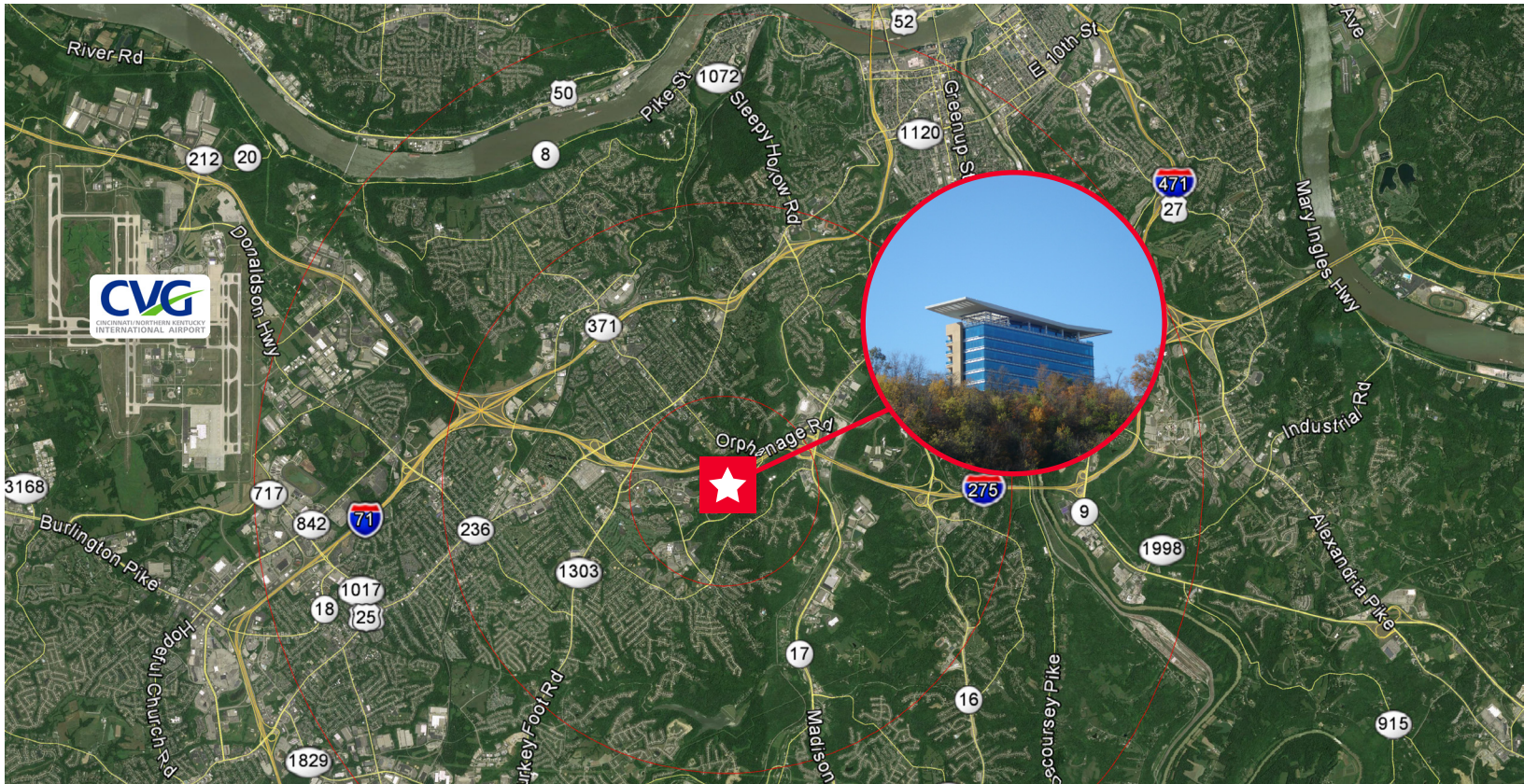
# SEVENTH FLOOR

10,350 SF





# LOCATION, ACCESS, AND VISIBILITY

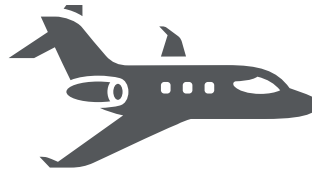


## LOCATION BY THE NUMBERS



**Immediate access** to I-275 with quick access to I-71/I-75 and I-471

**Retail-like visibility** on I-275 for corporate recognition

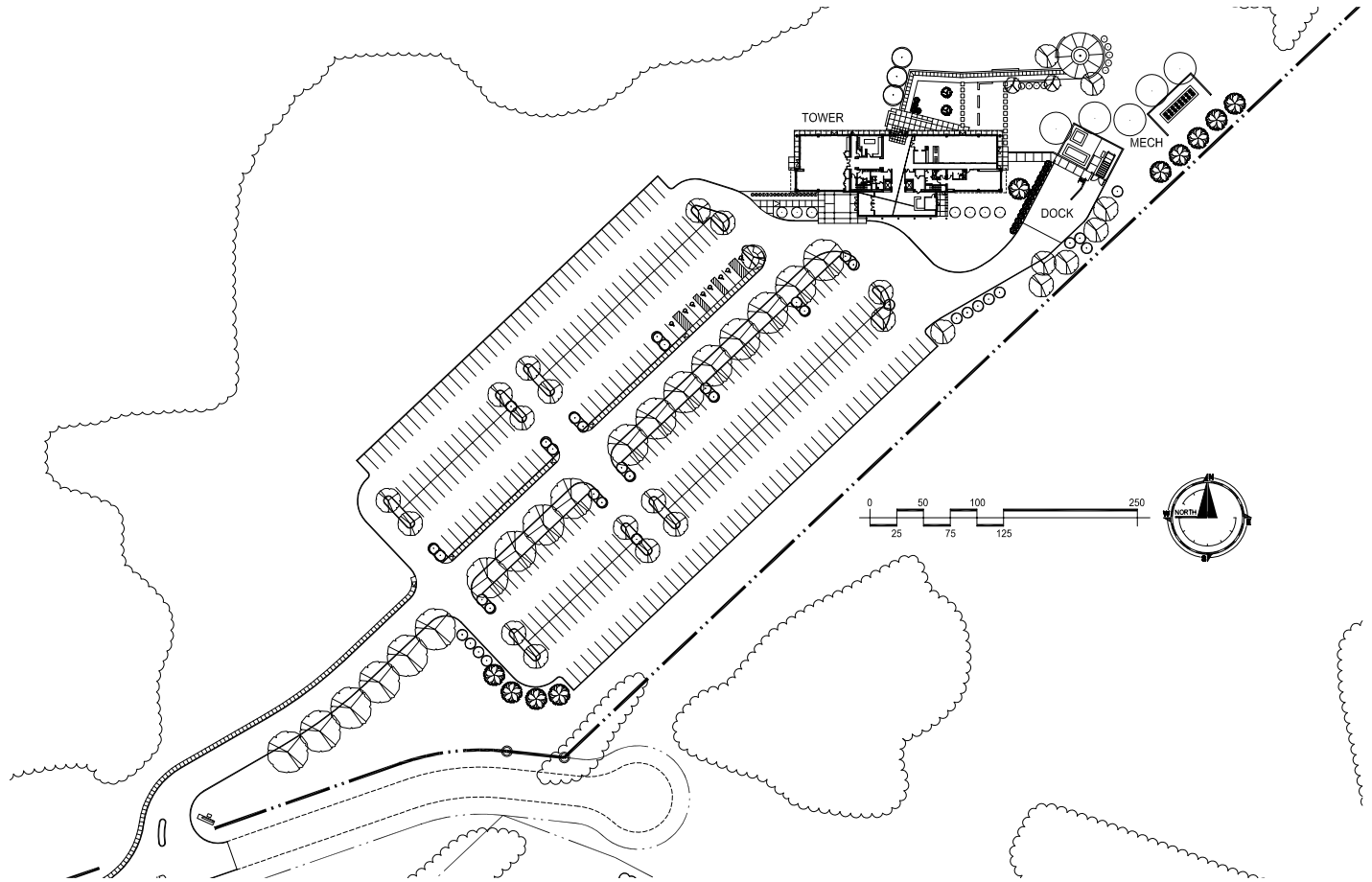


The CVG Airport has an estimated average **762,924** passengers monthly

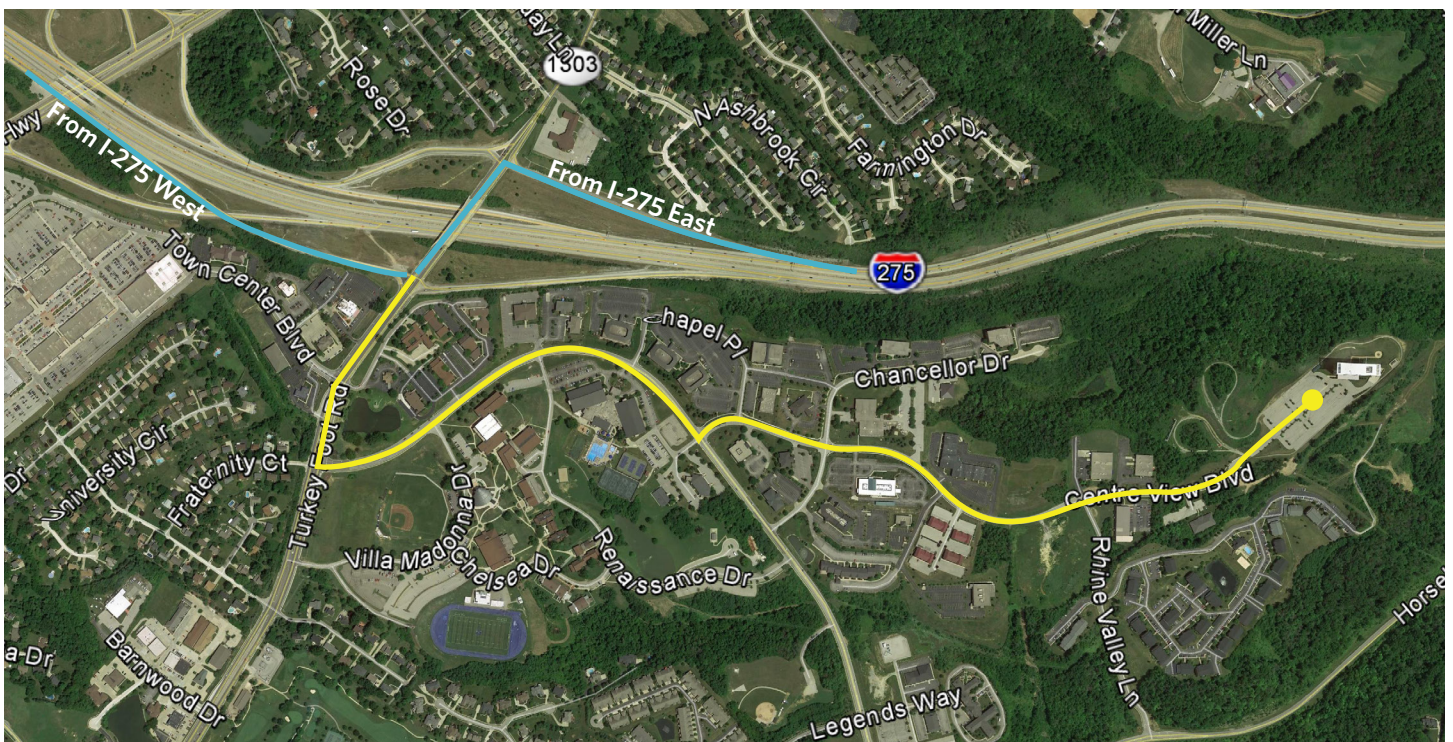


I-275 has nearly **102,000** average daily vehicles passing through Crestview Hills

## SITE OVERVIEW



## ACCESS



For more information contact: