

± 8,688 SF OFFICE BUILDING AVAILABLE

104-106 West Front Street | Media, PA 19063

FOR SALE:

\$1.55M

PROPERTY FEATURES

- ✓ ± 8,688 SF Office Building For Sale
- ✓ Zoning: Office / Historic District
- ✓ Easy access to major highways & public transportation

BUILDING 104 INCLUDES:

FIRST FLOOR

Conference Room, 2 Private Offices, Reception Area & 1 Bathroom

SECOND FLOOR

2 Private Offices, Reception Area & Full Bath

BUILDING 106 INCLUDES:

FIRST FLOOR

6 Private Offices, 2 Bathrooms & 1 Conference Room

SECOND FLOOR

3 Private Offices, 1 Bathroom & Kitchenette

BASEMENT (Partially Finished)

3 Private Offices & Kitchenette



CONTACT US

JAMES PINCKNEY

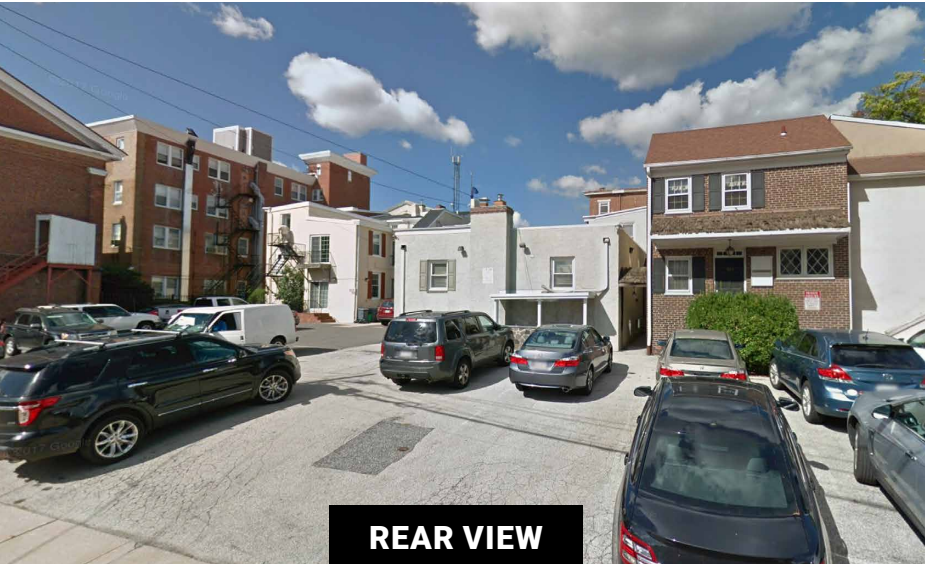
Phone: 610.359.1100
Cell: 610.453.2569
Email: jpinckney@zmcre.com

TESS SCOTT

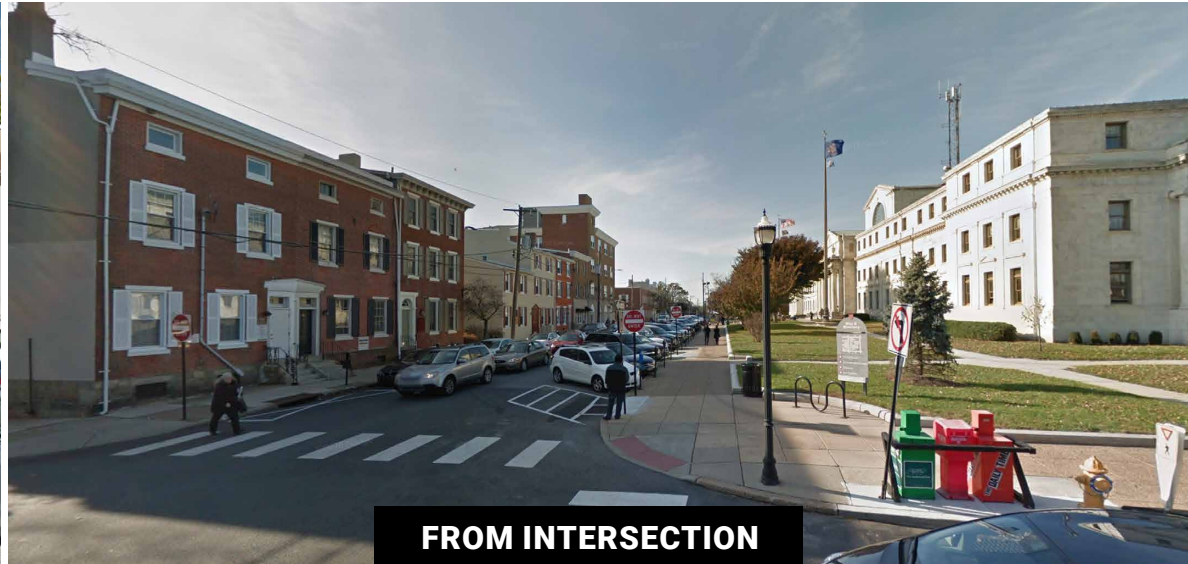
Phone: 610.359.1100
Cell: 610.401.3453
Email: tscott@zmcre.com

1306 Wilmington Pike, Suite A-2
West Chester, PA 19382
610.359.1100
www.zmcre.com

MEDIA EXTERIOR PHOTOS: 104 - 106 WEST FRONT STREET



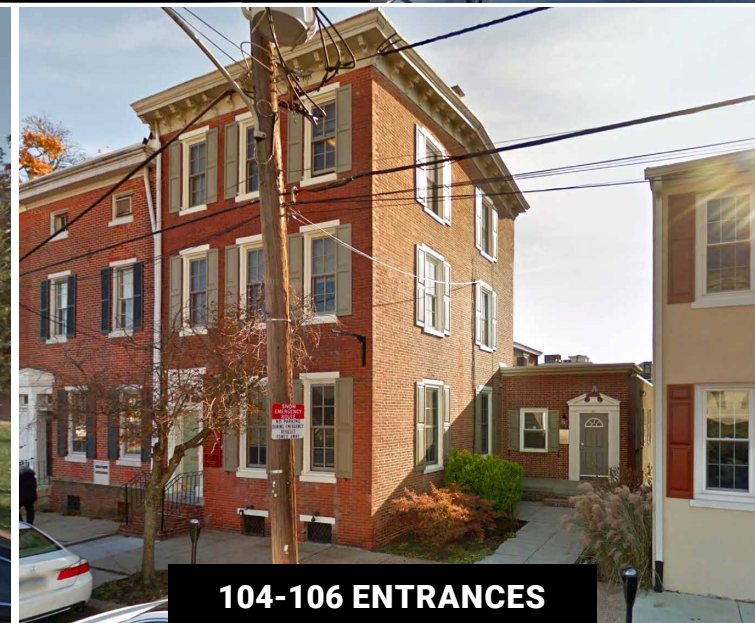
REAR VIEW



FROM INTERSECTION



PROXIMITY TO COURTHOUSE



104-106 ENTRANCES


ZOMMICK MCMAHON
COMMERCIAL REAL ESTATE

CONTACT US

JAMES PINCKNEY

Phone: 610.359.1100

Cell: 610.453.2569

Email: jpinckney@zmcre.com

TESS SCOTT

Phone: 610.359.1100

Cell: 610.401.3453

Email: tscott@zmcre.com

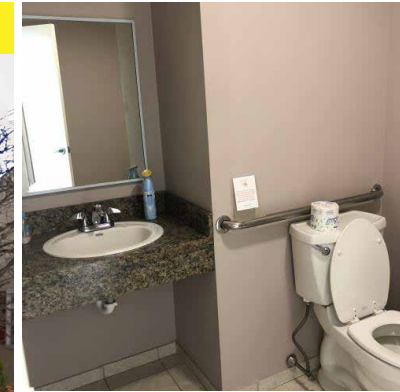
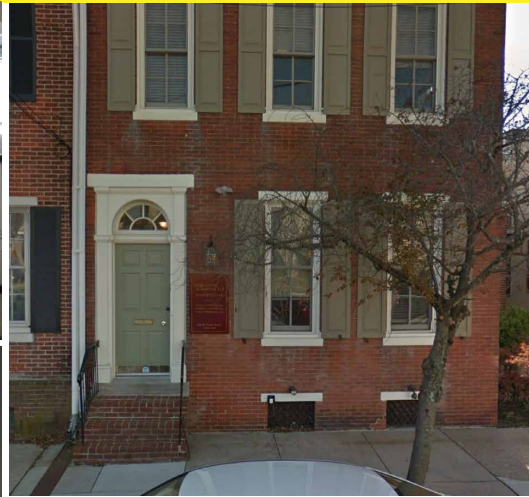
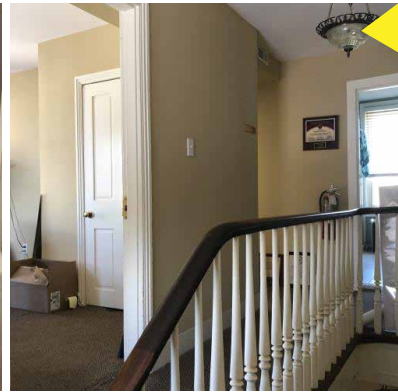
1306 Wilmington Pike, Suite A-2

West Chester, PA 19382

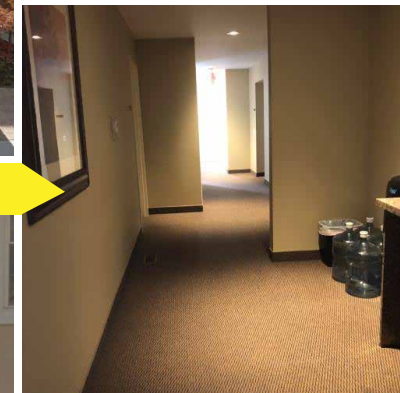
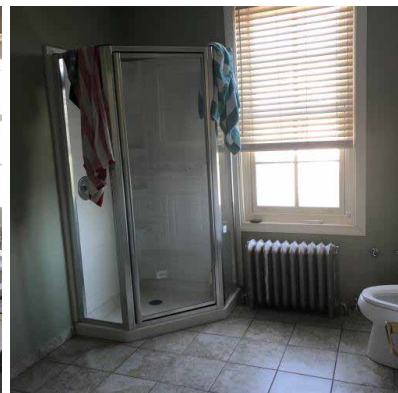
610.359.1100

www.zmcre.com

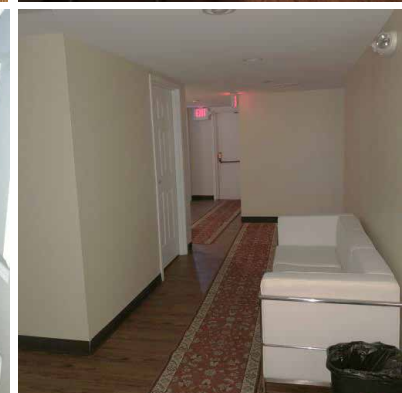
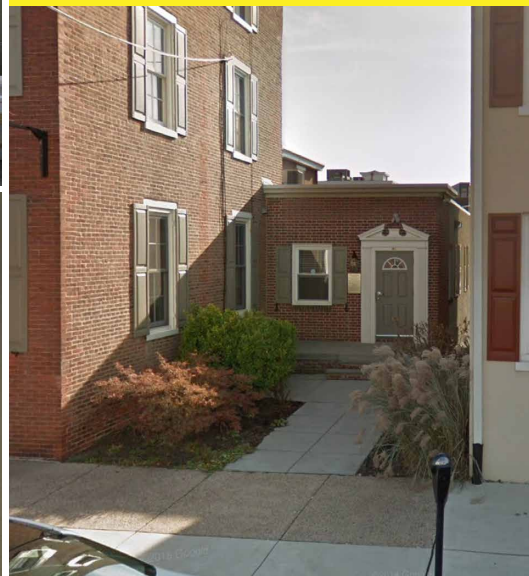
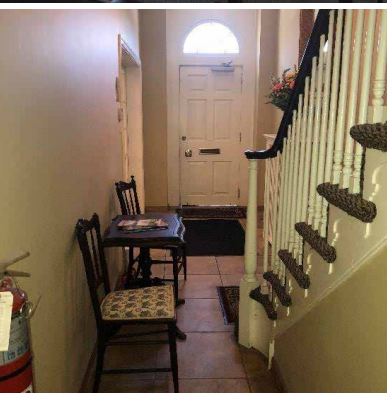
MEDIA BUILDING PHOTOS: 104 - 106 WEST FRONT STREET



BUILDING 104



BUILDING 106



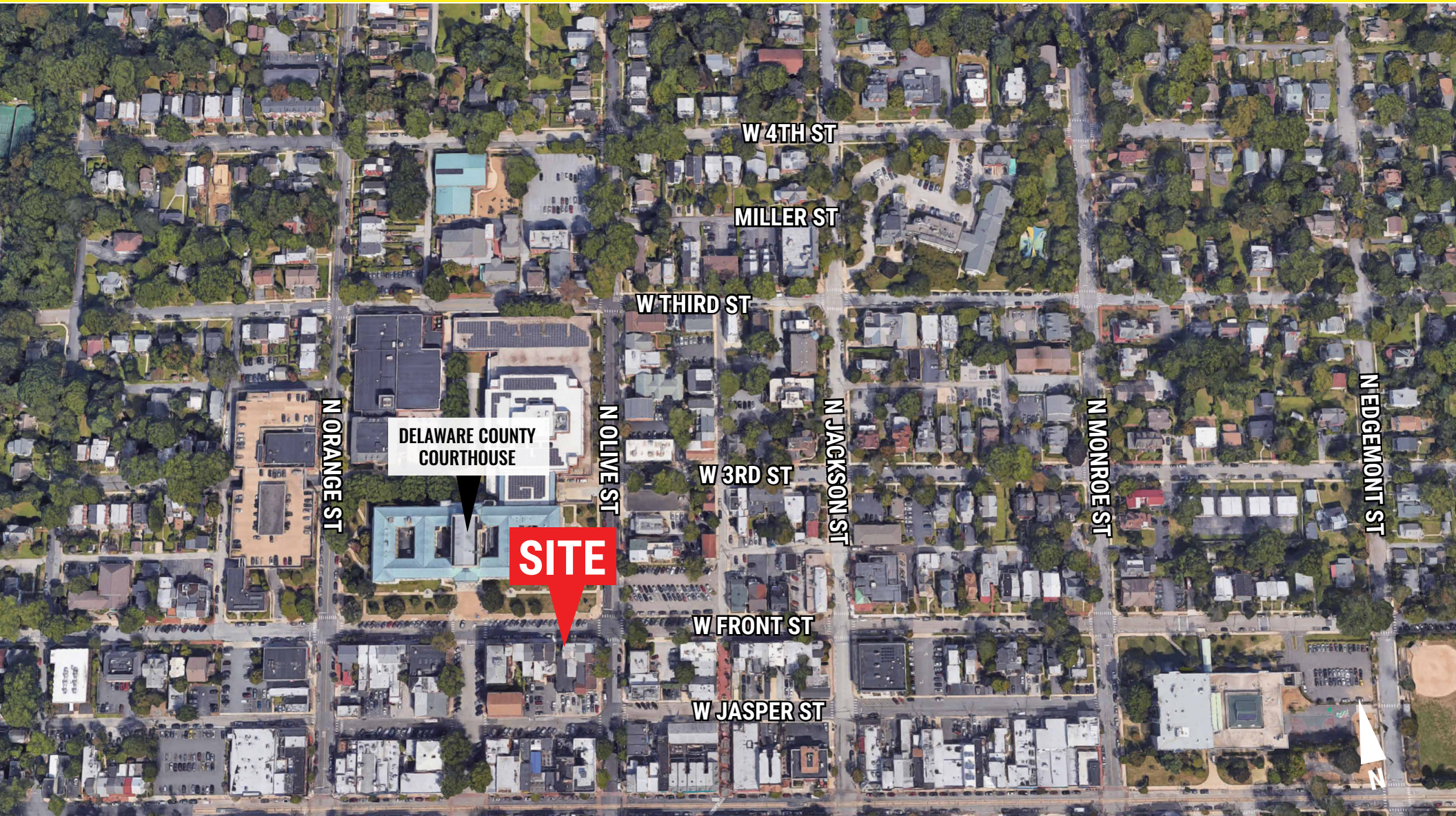
CONTACT US

JAMES PINCKNEY
Phone: 610.359.1100
Cell: 610.453.2569
Email: jpinckney@zmcre.com

TESS SCOTT
Phone: 610.359.1100
Cell: 610.401.3453
Email: tscott@zmcre.com

1306 Wilmington Pike, Suite A-2
West Chester, PA 19382
610.359.1100
www.zmcre.com

MEDIA SITE LOCATION AERIAL: 104 - 106 WEST FRONT STREET



CONTACT US

JAMES PINCKNEY
Phone: 610.359.1100
Cell: 610.453.2569
Email: jpinckney@zmcre.com

TESS SCOTT
Phone: 610.359.1100
Cell: 610.401.3453
Email: tscott@zmcre.com

1306 Wilmington Pike, Suite A-2
West Chester, PA 19382
610.359.1100
www.zmcre.com

ABOUT ZOMMICK McMAHON COMMERCIAL REAL ESTATE

Zommick McMahon Commercial Real Estate, Inc. has been a Metro Philadelphia Area staple since its inception in 1949. The Company was founded by Joseph Zommick, and continues today with Ryan McMahon and his highly experienced staff, whom are all results-oriented professionals.

SOME OF OUR SATISFIED CLIENTS:

**ROYAL
FARMS**



Walgreens

WSFS bank
We Stand For Service

Regency
Centers.



Wawa

Bank of America®



IRON HILL
BREWERY & RESTAURANT

**DUNKIN'
DONUTS**



Express
EMPLOYMENT PROFESSIONALS


ZOMMICK McMAHON
COMMERCIAL REAL ESTATE

CONTACT US

JAMES PINCKNEY

Phone: 610.359.1100

Cell: 610.453.2569

Email: jpinckney@zmcre.com

TESS SCOTT

Phone: 610.359.1100

Cell: 610.401.3453

Email: tscott@zmcre.com

1306 Wilmington Pike, Suite A-2

West Chester, PA 19382

610.359.1100

www.zmcre.com