

# THE GUERNSEY BUILDING

## NOW LEASING

70 MAIN STREET  
PETERBOROUGH, NH 03458



### WELCOME TO THE GUERNSEY BUILDING

Located in historic downtown Peterborough, at the corner of Grove and Main Street. Just steps from Peterborough's best restaurants, shopping, entertainment, and services, the five-story Guernsey Building boasts a lovely brick exterior and copper roof. Multiple configurations of office space are available at competitive rates. From 200-12,000 contiguous RSF available. Ample tenant and guest parking.

**History:** From 1894 to 1982, Peterborough was the home of the American Guernsey Cattle Club, which kept pedigrees of cattle descended from the Isle of Guernsey in the English Channel. In 1950, the Club constructed this building to house the genealogies of tens of thousands of Guernsey cows. The structure, by design, was intended to be virtually fireproof to better protect the paper files it housed.

*Proudly owned by*

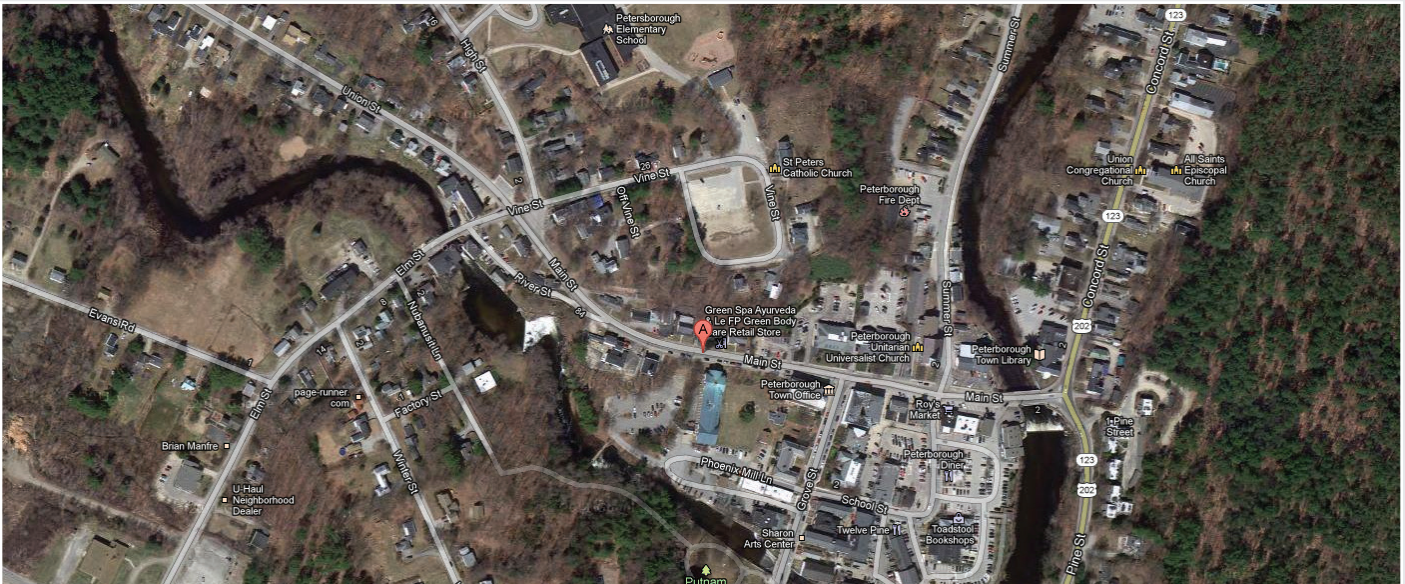
**R.J. FINLAY & Co.**<sup>SM</sup>

SCHEDULE A TOUR TODAY!

**603.672.0300 x127**

[rjfinlay.com](http://rjfinlay.com)

## HISTORIC DOWNTOWN LOCATION:



With its rich history, dining options, and arts & cultural activities, Peterborough is an idyllic location for any business.



Downtown Peterborough is just a few short steps from The Guernsey Building.

For more information about available space and lease rates, contact:

**Kim Reagan | 603.672.0300 x127 | [kreagan@rjfinlay.com](mailto:kreagan@rjfinlay.com)**