

FOR SALE, LEASE OR BUILD TO SUIT

From ± 1 to ± 5.64 Acres of Industrial/Commercial Land

8530 Belvedere Road
West Palm Beach, FL 33411



PROPERTY FEATURES

- + Located within a Qualified Federal Opportunity Zone
- + Currently Approved for Two Buildings that Total $\pm 46,000$ SF
- + Site has direct access along Sansburys Way as well as Belvedere Road
- + Ideal for Owner-User Warehouse Building with Yard
- + Close Proximity to the Florida Turnpike
- + Permitted uses include Industrial, Retail and Office

SALE PRICE - \$5,500,000

LEASE RATE - SUBJECT TO SIZE, CREDIT, LEVEL OF IMPROVEMENTS, ETC



CONTACT

KIRK NELSON

Senior Vice President
+1 561 227 1803
kirk.nelson@cbre.com

ROBERT SMITH

Executive Vice President
+1 561 478 0330
robert.c.smith@cbre.com

© 2019 CBRE, Inc. All rights reserved. This information has been obtained from sources believed reliable, but has not been verified for accuracy or completeness. You should conduct a careful, independent investigation of the property and verify all information. Any reliance on this information is solely at your own risk. CBRE and the CBRE logo are service marks of CBRE, Inc. All other marks displayed on this document are the property of their respective owners, and the use of such logos does not imply any affiliation with or endorsement of CBRE. Photos herein are the property of their respective owners. Use of these images without the express written consent of the owner is prohibited.

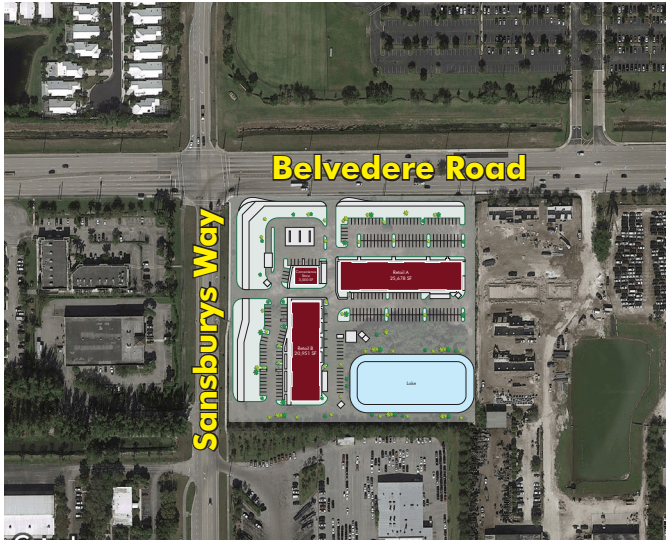
CBRE, Inc.
Licensed Real Estate Broker

CBRE

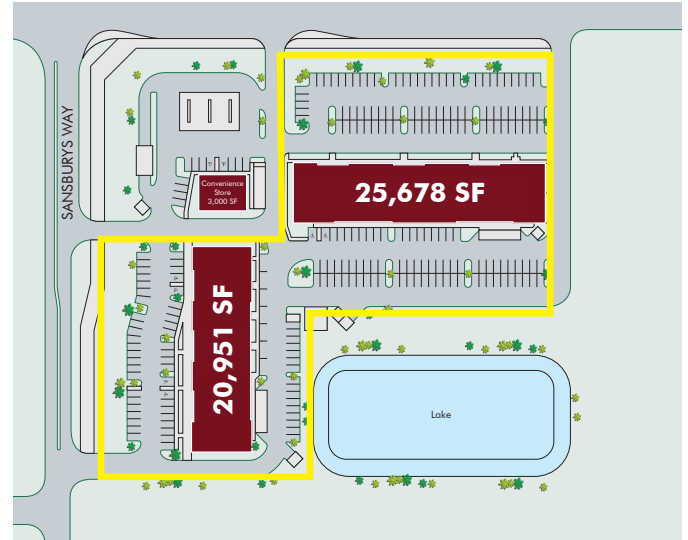
FOR SALE, LEASE OR BUILD TO SUIT
**From ±1 to ±5.64 Acres of
Industrial/Commercial Land**

8530 Belvedere Road
West Palm Beach, FL 33411

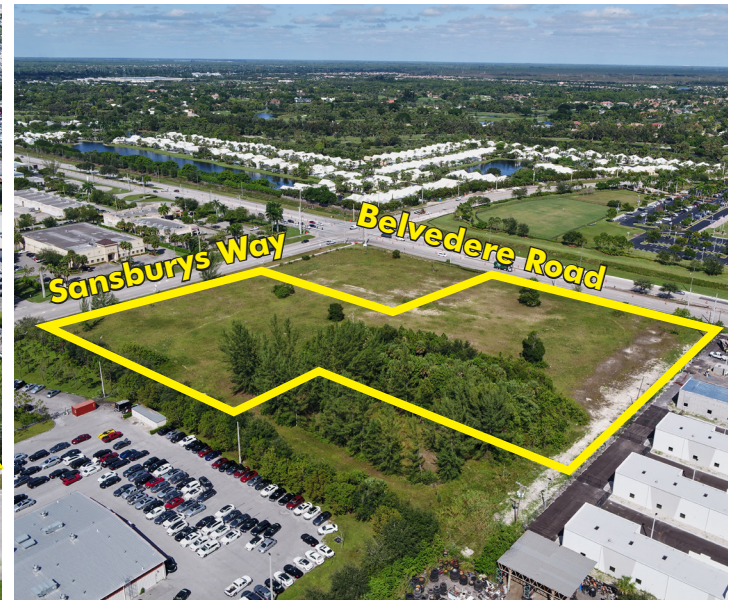
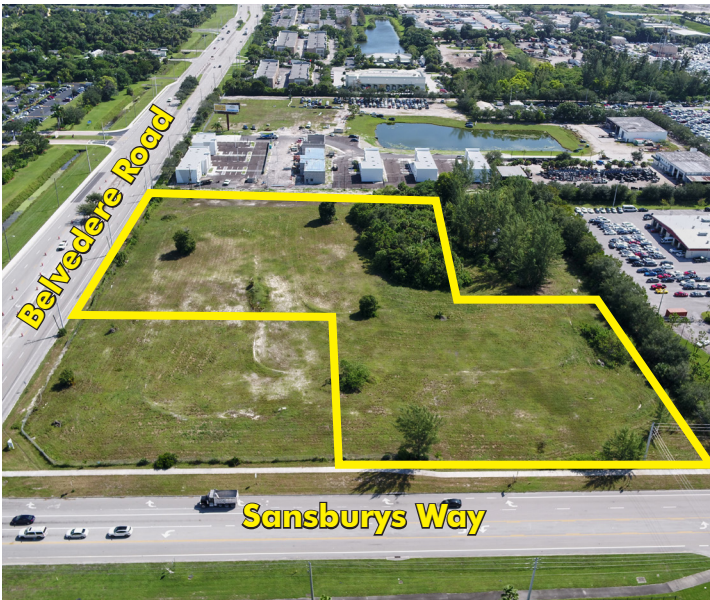
AERIAL MAP WITH SITE PLAN



SITE PLAN



AERIALS



CONTACT

KIRK NELSON
Senior Vice President
+1 561 227 1803
kirk.nelson@cbre.com

ROBERT SMITH
Executive Vice President
+1 561 478 0330
robert.c.smith@cbre.com