

Restaurant Space For Lease

// VILLAGE AT RIVERSTONE

N 2416 Old Mill Loop, Coeur d'Alene, ID 83814



// PRESENTED BY:

BOB SPOONER

COMMERCIAL & LEASING MANAGER

509.999.1959

BSPOONER@G-B.COM



// PROPERTY SUMMARY



PROPERTY HIGHLIGHTS

- 5,604 SQFT
- 3- Hoods 12', 10' and 36" DW hood
- Dish pit
- Walk-In cooler and freezer
- Storage loft (not included in SQFT)
- Bar area
- Dining area
- Banquet / large group area
- Available immediately
- \$22-\$26 PSF NNN
- NNN EST \$7.53 PSF
- Other tenants include Starbucks, Regal Cinemas, Azteca, Sushi I, San Francisco Sourdough, Cold Stone Creamery, Buckle, Zumiez, Orvis NW Outfitters, and others

PROPERTY DESCRIPTION

The Subject is located at the signalized intersection of Northwest Boulevard and Riverstone Drive located in the heart of the Riverstone master planned development which is a 160 acre community which includes retail spaces, office buildings, a 10 acre park, 25 miles of trails, 2 hotels, 132 residential condos, and 202 residential apartments.

DEMOGRAPHICS	1 MILE	3 MILES	5 MILES
Total Households	2,082	16,534	28,875
Total Population	4,496	36,661	64,996
Average HH Income	\$39,023	\$48,967	\$52,966

// PRESENTED BY:

BOB SPOONER
COMMERCIAL & LEASING MANAGER
509.999.1959
BSPOONER@G-B.COM



// ADDITIONAL PHOTOS

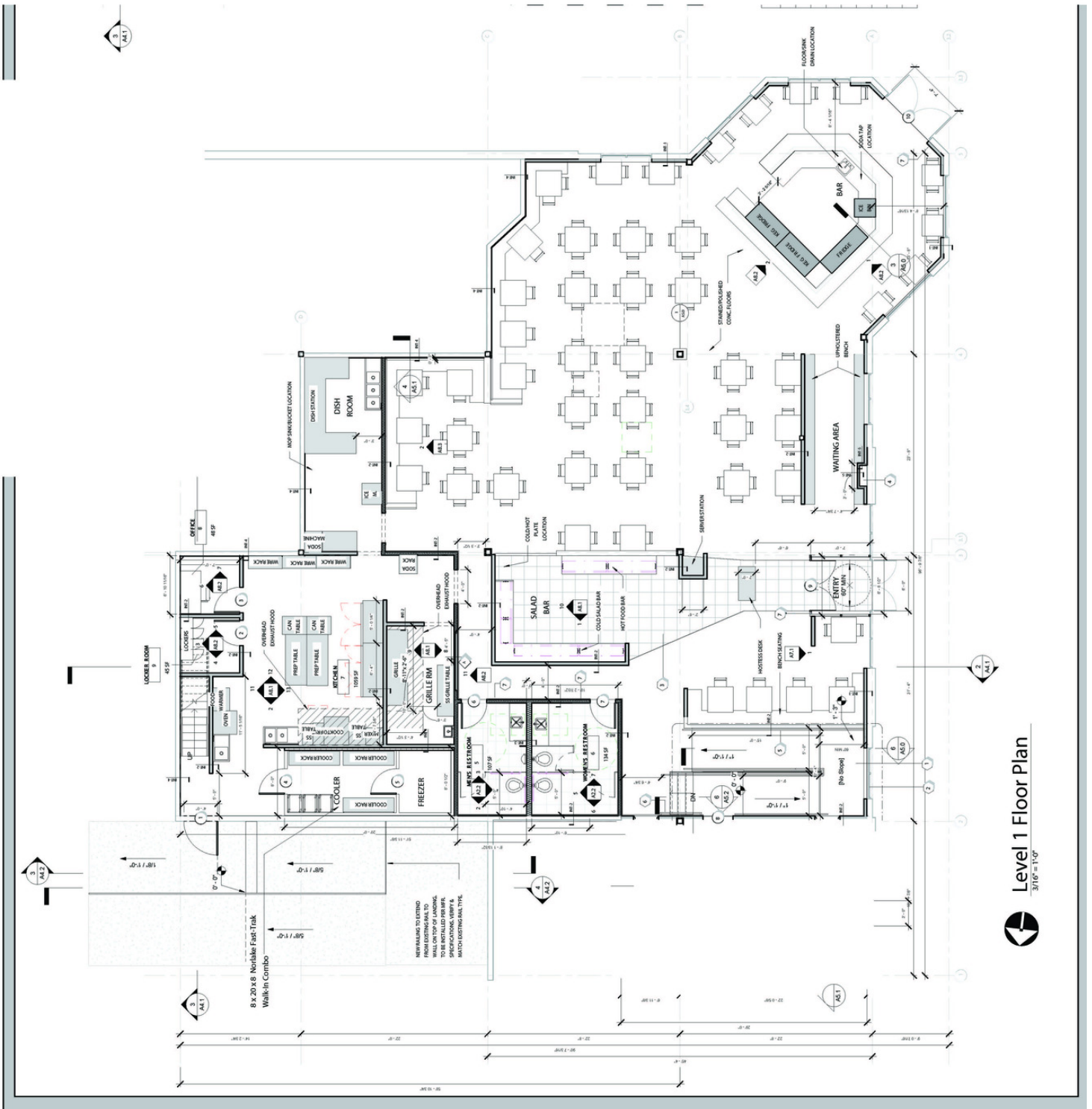


// PRESENTED BY:

BOB SPOONER
COMMERCIAL & LEASING MANAGER
509.999.1959
BSPOONER@G-B.COM



// FLOOR PLAN



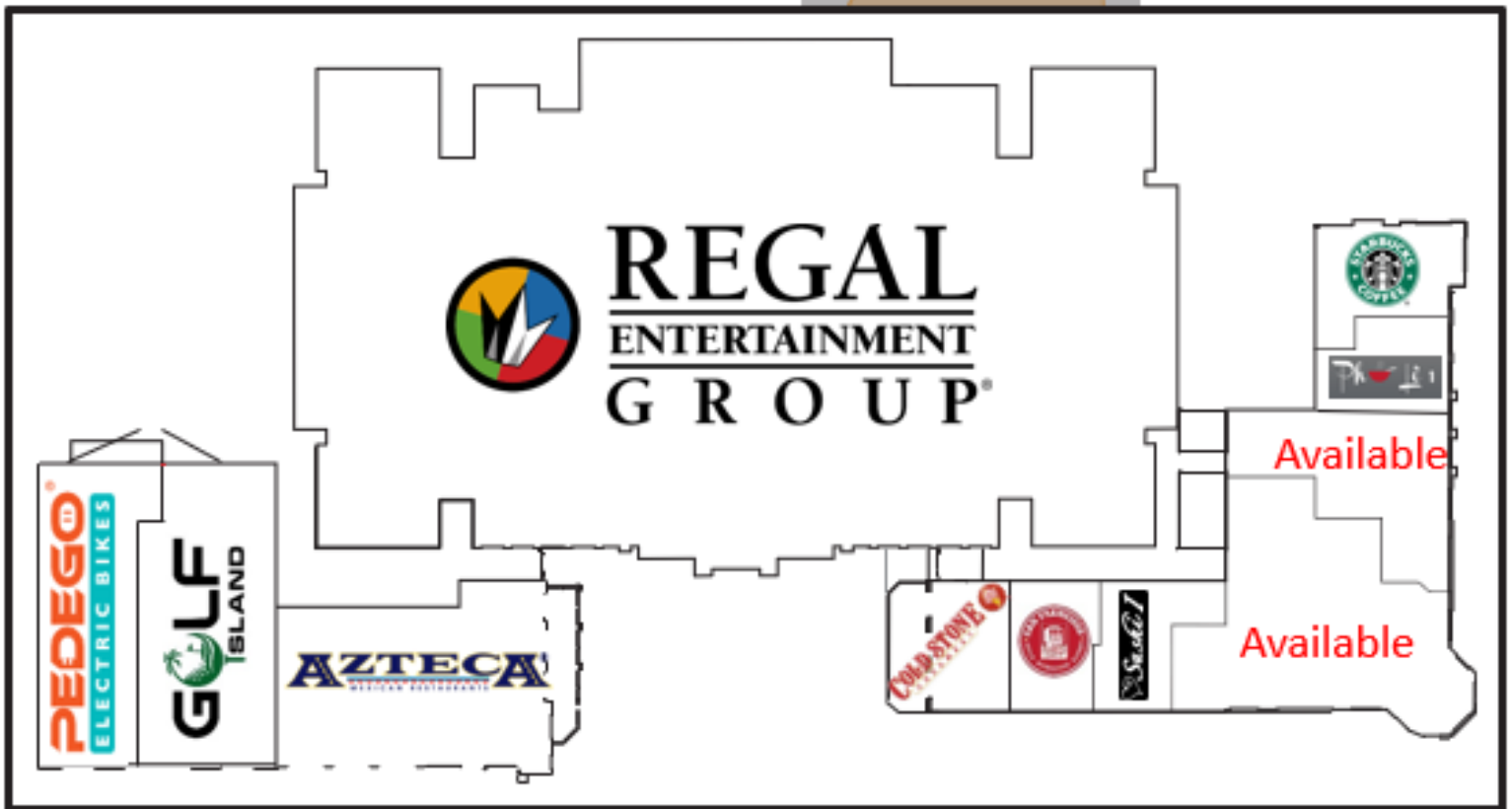
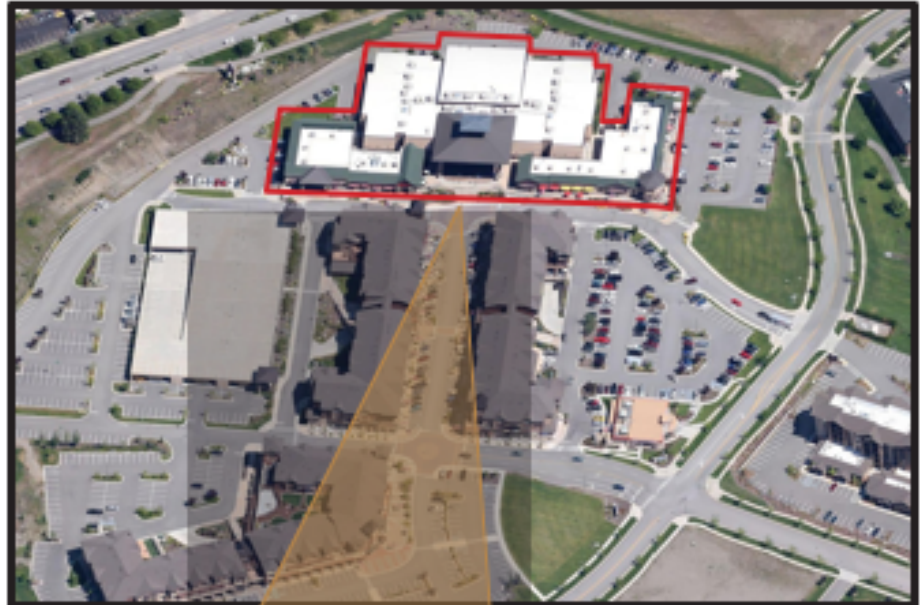
Level 1 Floor Plan
3/16-110

// PRESENTED BY:

BOB SPOONER
COMMERCIAL & LEASING MANAGER
509.999.1959
BSPOONER@G-B.COM



// SITE MAP



// PRESENTED BY:

BOB SPOONER
COMMERCIAL & LEASING MANAGER
509.999.1959
BSPOONER@G-B.COM



// RIVERSTONE RETAIL MAP



Google

Imagery ©2023 Airbus, Maxar Technologies, U.S. Geological Survey, USDA/FPAC/GEO

// PRESENTED BY:

BOB SPOONER
COMMERCIAL & LEASING MANAGER
509.999.1959
BSPOONER@G-B.COM

