

FOR LEASE | PRIME RETAIL LOCATION

335 MAINE MALL ROAD, SOUTH PORTLAND, ME 04106



JOIN EYEMART EXPRESS



PROPERTY HIGHLIGHTS

- 3,345± SF retail unit next to Eyemart Express which recently extended its lease
- Highly visible retail center situated directly across from the front entrance of the Maine Mall
- Exceptional location in much sought after Maine Mall Road retail corridor
- Nearby retailers include Eyemart Express, Chipotle, Cracker Barrel Bernie & Phyl's, Popeyes, Eastern Mountain Sports, DoubleTree by Hilton, Starbucks, Mattress Firm, Berlin City and many more
- Ample on-site parking
- Less than 1 mile from I-295, the Maine Turnpike and the Portland International Jetport

FOR LEASE | PRIME RETAIL LOCATION

335 MAINE MALL ROAD, SOUTH PORTLAND, ME 04106



PROPERTY DETAILS

OWNER	333 MMR Development, LLC & Who Is John Galt, LLC
CENTER SIZE	6,571± SF
AVAILABLE SPACE	3,345± SF
PARKING	32 on-site parking spaces in common
HVAC	Central HVAC - Gas
UTILITIES	Municipal water/sewer
ZONING	CCR - Central and Regional Commercial District
NEARBY BUSINESSES	Eyemart Express, Chipotle, Cracker Barrel Bernie & Phyl's, Popeyes, Eastern Mountain Sports, DoubleTree by Hilton and all the stores of the Maine Mall
SIGNAGE	Roadside Pylon and unit entrance
CAMS	\$4.02/SF (Est.)
RE TAXES	\$4.38/SF (Est.)
LEASE RATE	\$45.00/SF NNN

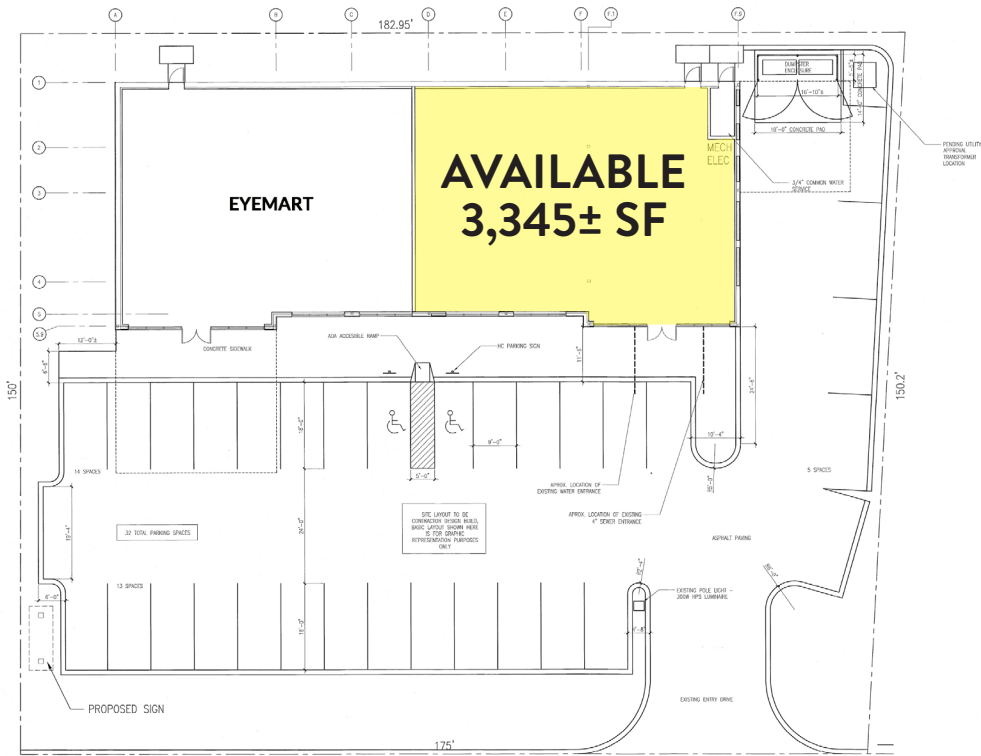


FOR LEASE | PRIME RETAIL LOCATION

335 MAINE MALL ROAD, SOUTH PORTLAND, ME 04106

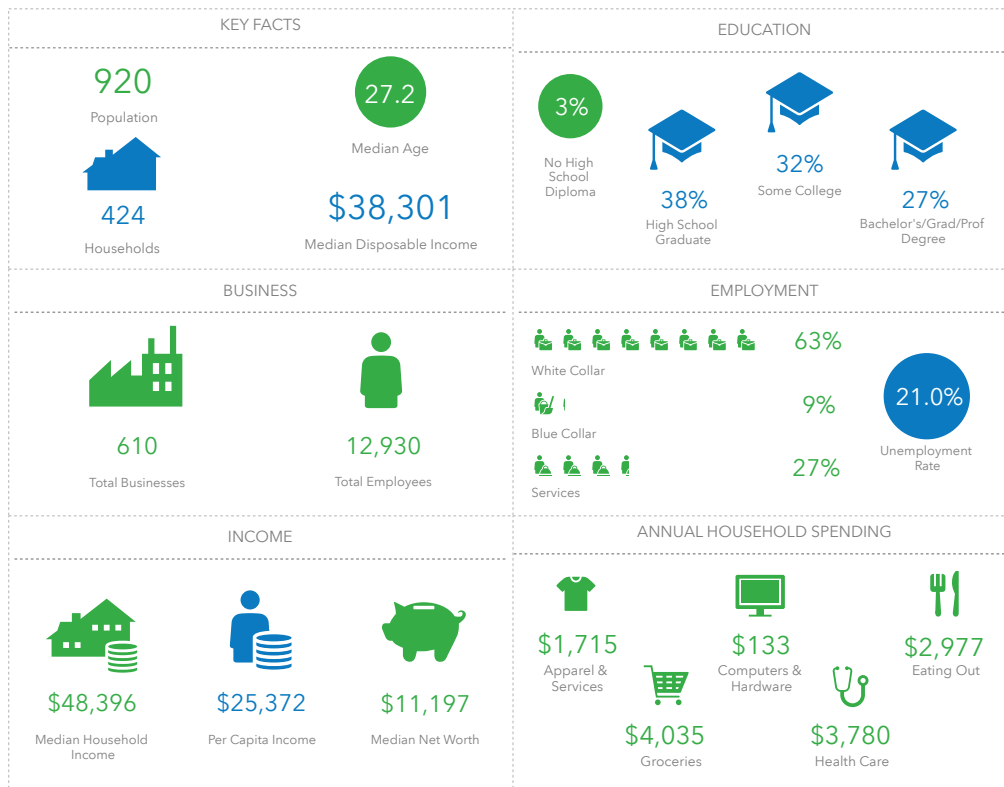


FLOOR PLAN



MAINE MALL ROAD

DEMOGRAPHICS



FOR LEASE | PRIME RETAIL LOCATION

335 MAINE MALL ROAD, SOUTH PORTLAND, ME 04106



CONTACT US



GREGORY BOULOS

Senior Partner

+1 207.553.1715 D

+1 207.831.3000 C

gboulos@boulos.com

©2020 The Boulos Company, Inc. All rights reserved. This information has been obtained from sources believed reliable, but has not been verified for accuracy or completeness. You should conduct a careful, independent investigation of the property and verify all information. Any reliance on this information is solely at your own risk. The Boulos Company and The Boulos Company logo are service marks of The Boulos Company, Inc. All other marks displayed on this document are the property of their respective owners. Photos herein are the property of their respective owners. Use of these images without the express written consent of the owner is prohibited.