

125 RIVINGTON STREET

BETWEEN ESSEX STREET AND NORFOLK STREET

LOWER EAST SIDE | MANHATTAN



Redefining Commercial Real Estate



125 RIVINGTON STREET

SPACE A

Ground Floor

Approx. **2,200 SF**

Basement

Approx. **2,200 SF**

Legal for Occupancy



CURRENTLY

Vacant

POSSESSION

Immediate

ASKING RENT

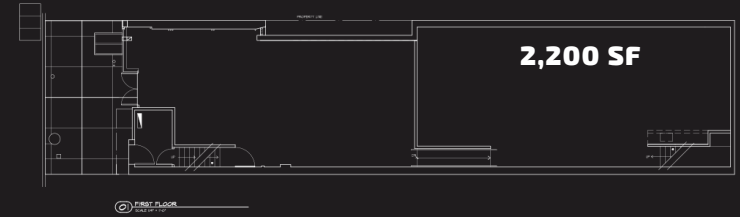
Upon Request

COMMENTS

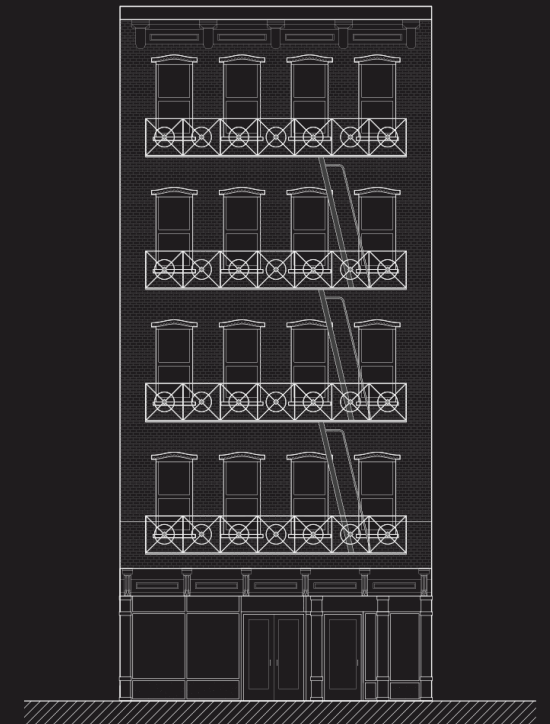
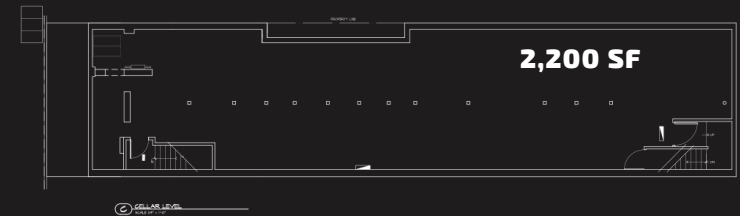
- All uses considered, including vented food
- One block from Essex Crossing
- TI available for qualified tenants
- Brand new glass storefront
- Surrounded by dense residential, top-rated restaurants and bars and numerous art galleries and fashion houses

FLOOR PLAN

GROUND FLOOR



BASEMENT



125 RIVINGTON STREET

CONTACT OUR BROKER FOR MORE INFORMATION

GARY LOWITT

Gary@ksrny.com

917.842.4777

646.869.5516

ARIEL BARADARIAN

ABaradarian@ksrny.com

646.928.5409

646.596.1884



KASSIN SABBAGH REALTY
 1385 Broadway 22nd floor | New York, NY 10018
 (212) 417-9217
<https://www.ksrny.com/>



All information supplied in this marketing presentation and/or flyer is from sources deemed reliable and is furnished subject to errors, omissions, modifications, removal of listings from sale/lease and to any listing conditions Any square footage, dimensions, floor plans and/or technical data set forth are approximations and are subject to further elaboration/confirmation.